



# WATERFRONT

**BONUS 1 & 2 BHK Homes, RAVET**

FROM THE MAKERS OF

**TREND**  
*Life3*  
WAKAD



**TREND**  
*Life2*  
WAKAD



**TREND**  
*Life*  
WAKAD



**TREND** HOMES  
LIFE TRENDS HERE  
HINJAWADI



THE  
BONUS  
LIFESTYLE

WE MADE IT HAPPEN

## YOU WANTED BEST OF BOTH THE WORLDS

*WE MADE IT HAPPEN!*

The more we grow in life, the farther we get away from our roots and nature that keeps us grounded and surrounded with peace and lushness. However, we brought it all back and made the extraordinary happen!

A Waterfront home is a wonderful creation that's hard to describe as it's as close to nature's beauty as it is to the city's beautiful vibe. These thoughtfully conceptualized Bonus Homes are sited at the most thriving Highway location while also being so intimately embraced with the touch of nature that you will get the best of both the worlds.

## A KISS OF NATURE'S BLISS ALL DAY, EVERY DAY

*WE MADE IT HAPPEN!*

There's this indescribable Magnificence about this place that just adds charm to your lifestyle. Just five steps from your bedroom you have this idyllic River View that will make every day a little extra joyous and blissful.

Surrounded by lavish greenery and the soothing river view this is just the home of everyone's dreams. From spending time with family to working from home, taking a walk around, or just sitting in your balcony, literally, everything is better with this view.



## A BONUS HOME FOR YOUR EVER-GROWING LIFESTYLE

*WE MADE IT HAPPEN!*

A little more space is always Welcomed in a lifestyle where you are constantly growing, rising, and budding. To accommodate that we have built these homes that come with the advantage of bonus space.

The rest is up to you how you want to magnify your luxuries and put this bonus space to use to add some extra value to your lifestyle. This home is totally up to accommodate all the big plans you have in store.

## A HOME THAT'S READY FOR THE FUTURE YOU ENVISIONED

*WE MADE IT HAPPEN!*

It's not just a home, it's your key to a perfectly balanced lifestyle that has all the brownie points you wished for. It's at the Highway which means easy access to all the great things in life that ensure you will never be left behind.

There's only growth and progress on the cards and the beautiful and peaceful surroundings just make it all worth it.



Artist's Impression

## Project Highlights

- ✔ Bonus Spaces - Convertible Homes
- ✔ Intelligent Planning
- ✔ Amenities Loaded Lifestyle
- ✔ Spectacular River - Highway views
- ✔ Best Price Assurance
- ✔ Bonus Launch Offers
- ✔ Trendy WFH Spaces

*WE MADE IT HAPPEN*



Artist's Impression



Artist's Impression

## Lifestyle Amenities



Multipurpose Play Court



Multipurpose Hall



Jogging Track



Party Lawn



Clubhouse



Yoga Deck & Gym



Swimming Pool

## SPECIFICATIONS

Each and every specification of your new home has been crafted carefully to ensure you get the pampering you deserve. Your new life should be the epitome of comfort, class, and luxury and we have gone that extra mile to offer you just that.

### STRUCTURE

- Earthquake resistant
- Internal gypsum finish plaster, external sand finish plaster

### KITCHEN

- Black granite platform
- Stainless Steel sink
- Dado upto Two Feet from Otta
- Provision for exhaust fan

### DRY BALCONY

- Washing Machine point
- Proper water inlet & outlet points

### FLOORING

- 2 X 2 Vitrified tiles
- Anti-skid wooden finish tiles in terrace
- Toilets -Designer glazed tiles, anti-skid tiles for flooring
- 2x2 Wooden finish vitrified tiles in Masterbedroom

### DOORS

- Laminated flush doors with fitting for main door
- Internal moulded door, Toilet door - Flush waterproof door
- Aluminium sliding doors for terrace
- Marble / Wooden door frame in bath / WC - Wooden door frames elsewhere

### WINDOWS

- 3 Track aluminium windows - Marble sill for all windows

### PAINTING

- Premium quality internal paint - Semi acrylic external paint

### TOILETS

- Designer glazed dado tiles, anti-skid tiles for flooring
- Provision for exhaust fan in toilets
- Provision for solar and geyser in Master toilet - Branded sanitaryware
- Good quality CP fittings

### ELECTRIC

- Modular switches
- TV point in Living & Master bedroom
- Concealed wiring with circuit breakers
- Tele point in Living
- Provision For DTH connection
- AC point in Master bedroom

### UTILITIES & OTHER

- Spacious circulation lobby
- Automatic elevators
- Power back-up for common areas and inverter point in home
- Solar water heater

### SECURITY

- CCTV surveillance in common areas

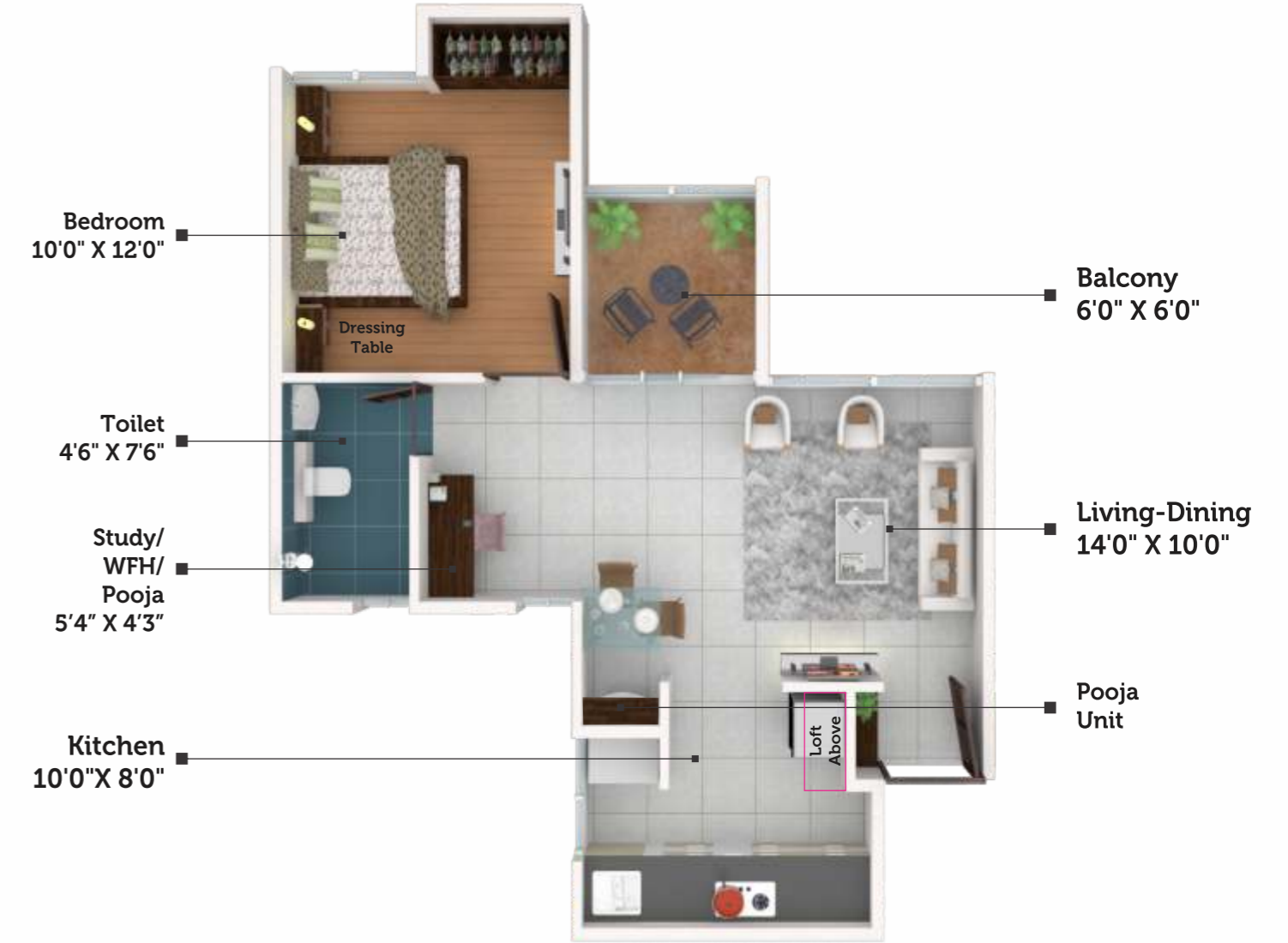
# MASTER PLAN



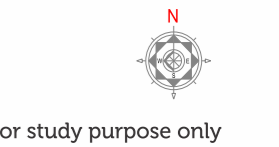
FOR INTERNAL REFERENCE USE ONLY



# Bonus 1 BHK (467 sq.ft.)

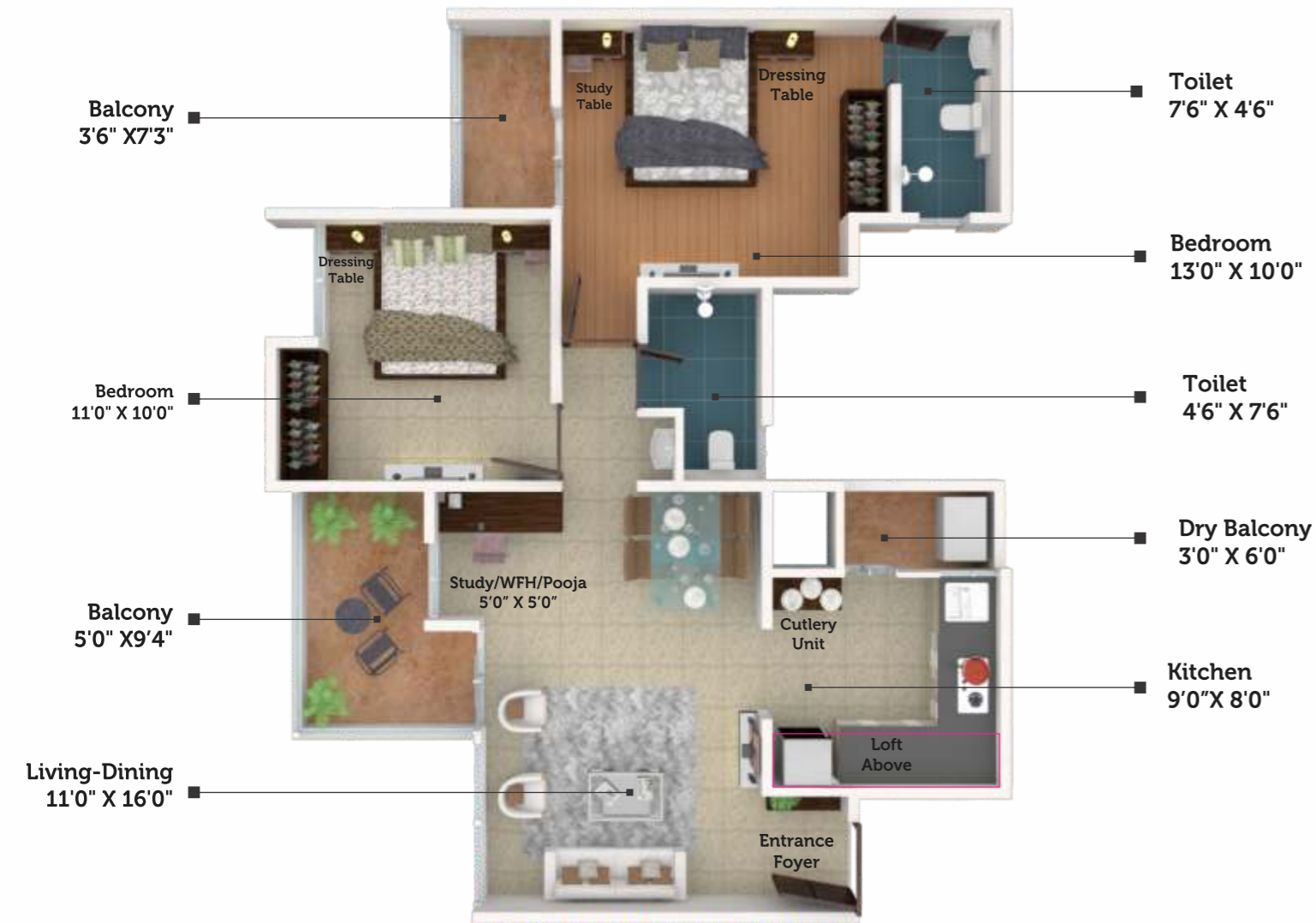


FOR INTERNAL REFERENCE USE ONLY





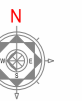
## Bonus 2 BHK (710 sq.ft.)



For study purpose only

FOR INTERNAL REFERENCE USE ONLY

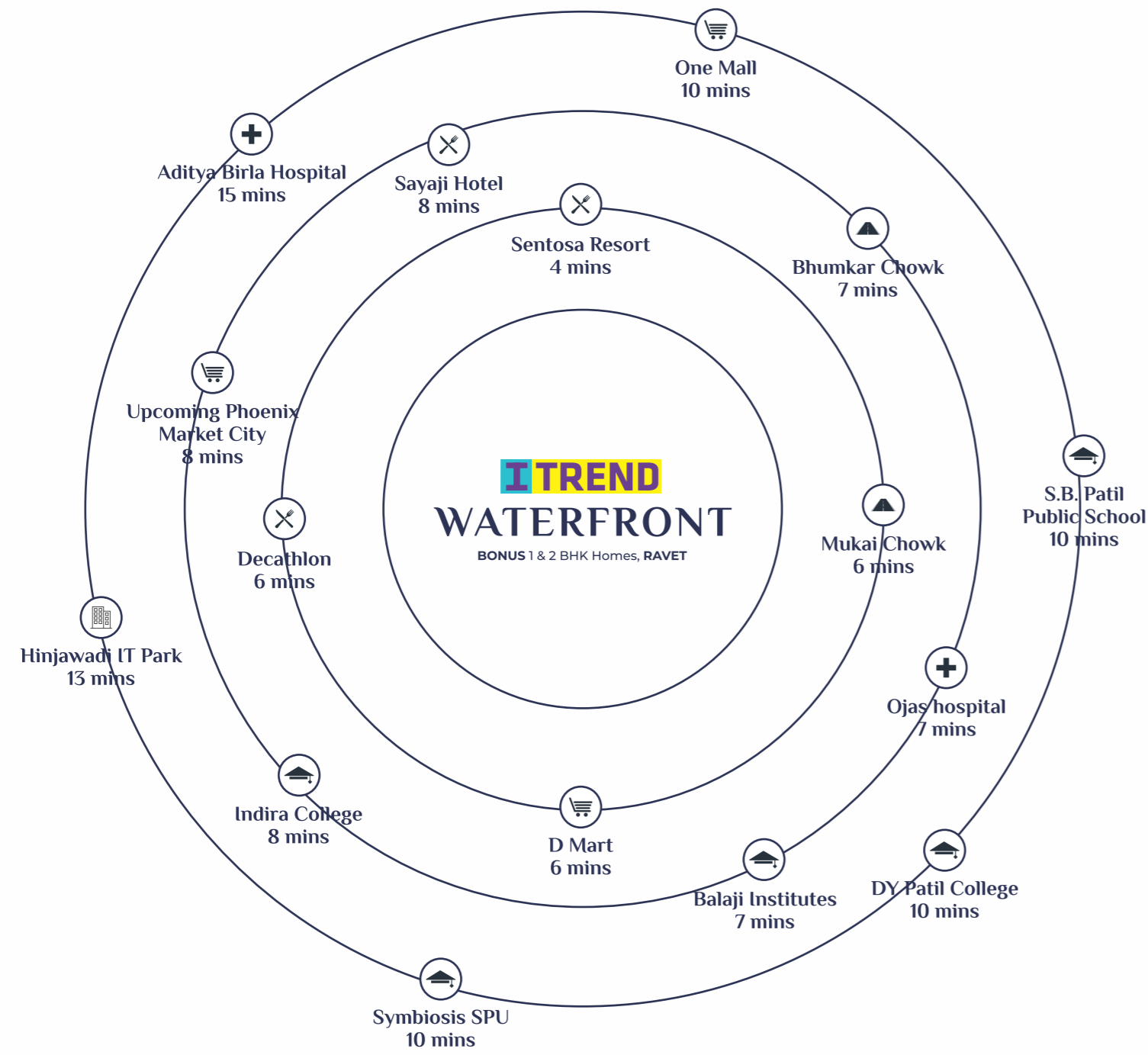
## Metro 2 BHK (628 sq.ft.)



For study purpose only

FOR INTERNAL REFERENCE USE ONLY

# Thriving Social Infrastructure



# Location Map



www.saheelproperties.com

A Project by



**Site Address:**  
Sr. No. 17/3, Near Ambika Rose Nursery,  
Mumbai - Banglore Highway, Ravet - 412101

**Office Address:**  
Saheel Properties, Office No.: 210, V18, Opp. Cummins  
India Campus, Balewadi High Street, Pune, - 411045

Scan for Latest offers



**Maha RERA: P52100030538**  
<https://maharera.mahaonline.gov.in/>



**9511 9511 42**

Disclaimer: The sale is subject to the terms of application form and agreement to sale. The images included are artist's impression indicating the anticipated appearance of ongoing development. The information is presented as general information and no warranty is expressly or impliedly given that the completed development will comply in any degree with such artist's impression or anticipated appearance. Recipients are advised to apprise themselves of the necessary and relevant information of the project(s)/offer(s) prior to making any purchase decisions. The contents of this brochure are purely conceptual and have no legal binding on us. The developer reserves the right to amend the layout, number of floors, number of flats, sizes, colour scheme, elevation, amenities and specifications.