



Residential Open Plots

At Aushapur, Near Ghatkesar,  
New Infosys Campus,  
Warangal Highway



### About the Project

Pinewood Homes is a residential plotted layout with state of the art amenities. It has a fully equipped clubhouse, swimming pool, gymnasium, childrens play area and several other facilities spread over an area of about 46 acres is situated at Aushapur Village, Ghatkesar with close proximity to Singapore Township, New Infosys campus and Raheja Mind space IT Park.

This project is being developed by Modi Builders, a leading housing company with a reputation for delivering quality housing at affordable pricing.



### Advantage Modi Builders:

- Builders with reputation for honesty and transparency
- Quality customer care and post sale assistance
- Clear title, guaranteed delivery with assured quality
- CC roads, underground electrical cabling and drainage
- World class clubhouse and Amenities
- Fully demarcated and safeguarded plots



### Clubhouse

#### Ground Floor

- Cafeteria
- Business Center
- Library / Study room

#### Second Floor

- Guest rooms
- T.V. Room with Mini Theater / Conference room

#### First Floor

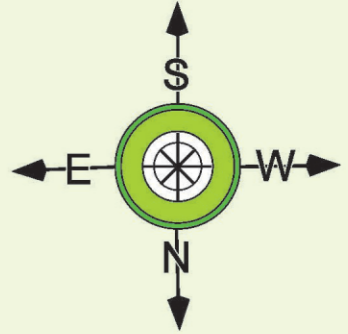
- Indoor Games
- Yoga / Aerobic Center
- Gym
- Sauna
- Steam
- Ancillary

### Shopping Complex

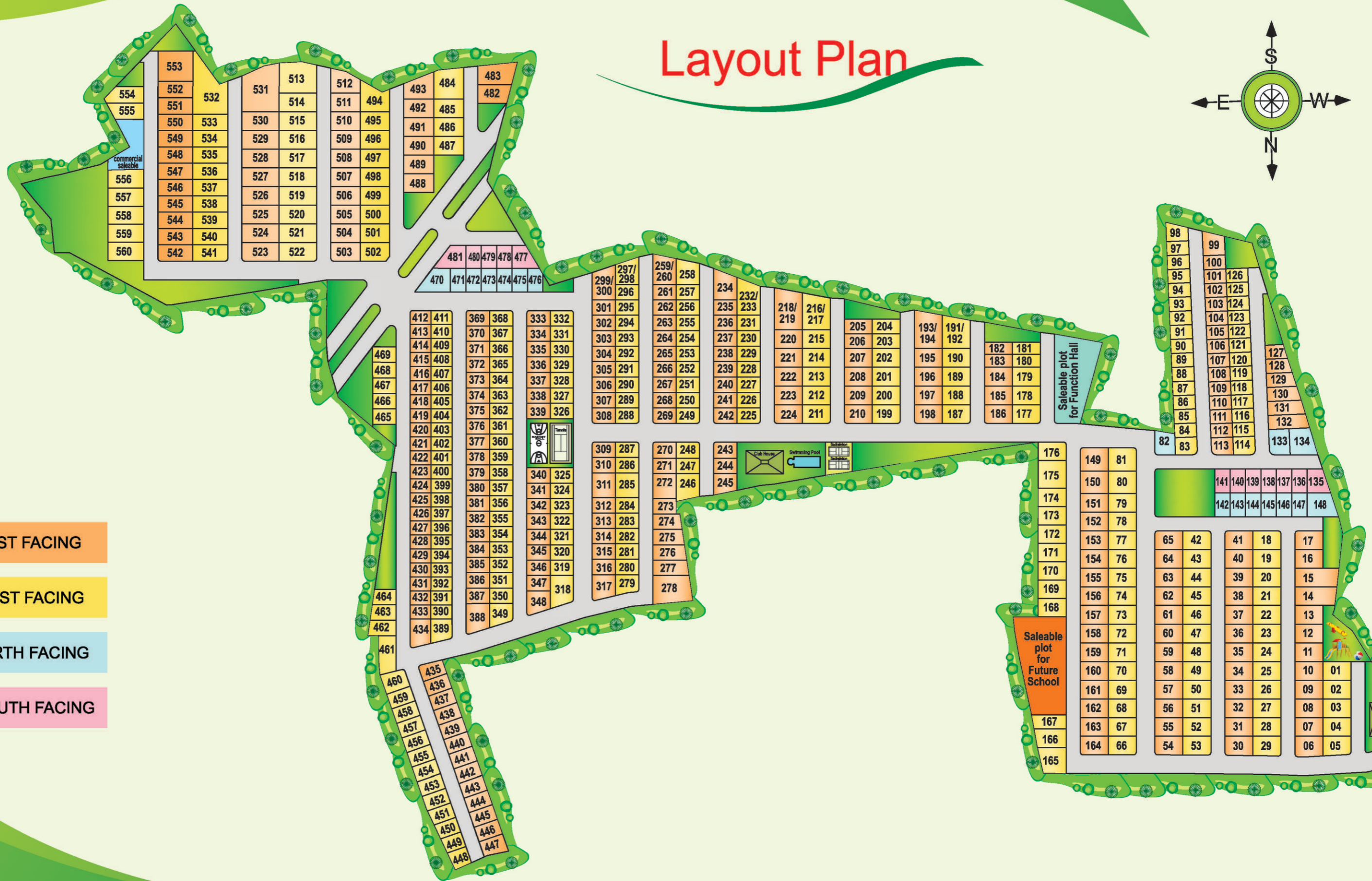
#### Provision For

- Grocery / Supermarket
- Coffee Shop
- Laundry
- Pharmacy
- Ladies Saloon
- Gents Saloon
- Clinic
- Creche

# Layout Plan



- EAST FACING
- WEST FACING
- NORTH FACING
- SOUTH FACING



553	531	513	512	493	484	483
554	532	514	494	492	485	482
555	533	515	495	491	486	
556	534	516	496	490	487	
557	535	517	497	489		
558	536	518	498	488		
559	537	519	499			
560	538	520	500			
	539	521	501			
	540	522	502			
	541					
	542					

481	480	479	478	477		
470	471	472	473	474	475	476

412	411	369	368	333	332
413	410	370	367	334	331
414	409	371	366	335	330
415	408	372	365	336	329
416	407	373	364	337	328
417	406	374	363	338	327
418	405	375	362	339	326
419	404	376	361		
420	403	377	360		
421	402	378	359		
422	401	379	358		
423	400	380	357		
424	399	381	356		
425	398	382	355		
426	397	383	354		
427	396	384	353		
428	395	385	352		
429	394	386	351		
430	393	387	350		
431	392	388	349		
432	391				
433	390				
434	389				

299/300	297/298	259/260	258	234	232/233	218/219	216/217	205/204	193/194	191/192	182/181
301	295	261	257	235	231	220	215	206/203	195	190	183/180
302	294	262	256	236	230	221	214	207/202	196	189	184/179
303	293	263	255	237	230	222	213	208/201	197	188	185/178
304	292	264	254	238	229	223	212	209/200	198	187	186/177
305	291	265	253	239	228	224	211	210/199			
306	290	266	252	240	227						
307	289	267	251	241	226						
308	288	268	250	242	225						
309	287	270	248	243							
310	286	271	247	244							
311	285	272	246	245							
312	284	273									
313	283	274									
314	282	275									
315	281	276									
316	280	277									
317	279	278									

Saleable plot for Function Hall

Saleable plot for Future School

98	99	101	126	127
97	100	102	125	128
96	103	104	124	129
95	105	106	123	130
94	107	108	122	131
93	109	110	121	132
92	111	112	120	133
91	113	114	119	134
90			118	
89			117	
88			116	
87			115	
86			114	
85			113	
84			112	
83			111	
82			110	

141	140	139	138	137	136	135
142	143	144	145	146	147	148

176	149	81
175	150	80
174	151	79
173	152	78
172	153	77
171	154	76
170	155	75
169	156	74
168	157	73
	158	72
	159	71
	160	70
	161	69
	162	68
	163	67
	164	66

65	42	41	18	17	
64	43	40	19	16	
63	44	39	20	15	
62	45	38	21	14	
61	46	37	22	13	
60	47	36	23	12	
59	48	35	24	11	
58	49	34	25	10	01
57	50	33	26	09	02
56	51	32	27	08	03
55	52	31	28	07	04
54	53	30	29	06	05

NORTH		
Plot Sizes (Sq Yard)	Plot Nos	Facing
233	82	North
268	133	North
328	134	North
188	142 to 147	North
335	148	North
308	470	North
183	471 to 475	North
179	476	North

EAST		
Plot Sizes (Sq Yard)	Plot Nos	Facing
292	6	East
267	7 to 13, 16, 17, 31 to 41, 55 to 65, 151 to 164, 184, 185, 186, 195 to 198, 207 to 210, 220 to 224	East
388	14	East
409	15	East
275	30 & 277	East
268	54	East
242	99	East
157	100 to 112	East
192	113	East
143	127	East
171	128	East
199	129	East
227	130	East
255	131	East
281	132	East
335	149	East
318	150	East
179	182 & 183	East
512	193/194	East
209	205 & 206	East
563	218/219	East
321	234	East
194	243 & 270	East
183	235 to 242, 244, 261 to 269, 271, 273, 301 to 310, 312 to 316, 333 to 347, 369 to 387	East
225	245	East
336	259/260	East
294	272 & 311	East
220	274	East
238	275	East
257	276 & 348	East
525	278	East
444	299/300	East
284	317	East
333	388	East
150	412 to 433	East
290	434	East
197	435	East
195	436 to 446	East
213	447	East
298	482	East
384	483	East
287	488 to 492	East
328	493	East
280	503 to 511	East
307	512	East
356	523 to 530	East
829	531	East
292	542 to 552	East
542	553	East

SOUTH		
Plot Sizes (Sq Yard)	Plot Nos	Facing
237	135	South
188	136 to 141	South
244	477	South
183	478 to 480	South
289	481	South

WEST		
Plot Sizes (Sq Yard)	Plot Nos	Facing
266	168	West
267	1 to 4, 18 to 28, 42 to 52, 66 to 79, 177, 178, 179, 187 to 190, 199 to 202, 211 to 215	West
271	5	West
281	29 & 297 / 298	West
270	53	West
318	80	West
335	81	West
195	83, 454 to 459, 463	West
157	84 to 87, 115 to 126	West
158	88 to 91, 96 & 97	West
159	92 to 95	West
182	98	West
202	114	West
340	165	West
290	166	West
239	167	West
265	169	West
264	170 to 172	West
263	173, 174 & 176	West
396	175	West
179	180 & 181	West
438	191/192	West
209	203 & 204	West
490	216/217	West
183	225 to 231, 247, 249 to 257, 280 to 284, 286 to 296, 319 to 332, 350 to 368, 465 to 469	West
398	232/233	West
299	246	West
194	248	West
279	258	West
221	279	West
294	285	West
353	318	West
246	349	West
236	389	West
150	390 to 411	West
171	448	West
161	449	West
174	450	West
187	451	West
196	452 & 453	West
245	460	West
326	461	West
213	462	West
178	464	West
461	484	West
287	485 to 487	West
371	494	West
280	495 to 501	West
276	502	West
578	513	West
356	514 to 522	West
786	532	West
292	533 to 541	West
295	554	West
277	555	West
334	556 to 560	West

## Amenities

- Swimming Pool
- Playgrounds
- Landscaped Gardens
- Sports Facilities
  - » Tennis Court
  - » Basketball Court
  - » Badminton Court
  - » Cricket Nets

## Surrounding Developments

- 15 minutes drive from Singapore Township
- 15 minutes drive from Raheja Mindspace - Pocharam, Infosys campus, Genpact and many other IT companies
- 20 minutes drive from Uppal
- 10 minutes to Outer Ring Road
- Several Schools, Colleges and Hospitals are located within close proximity
- Nims Medical Hospital, Bibinagar

## Salient Features

- Project approved by HMDA with clear title and Vaasthu compliant
- Fully equipped Club House
- Provision for School, Function Hall, Shopping Complex
- CC roads with underground cabling
- CRS marking for each plot
- 24x7 security with CC TV monitoring



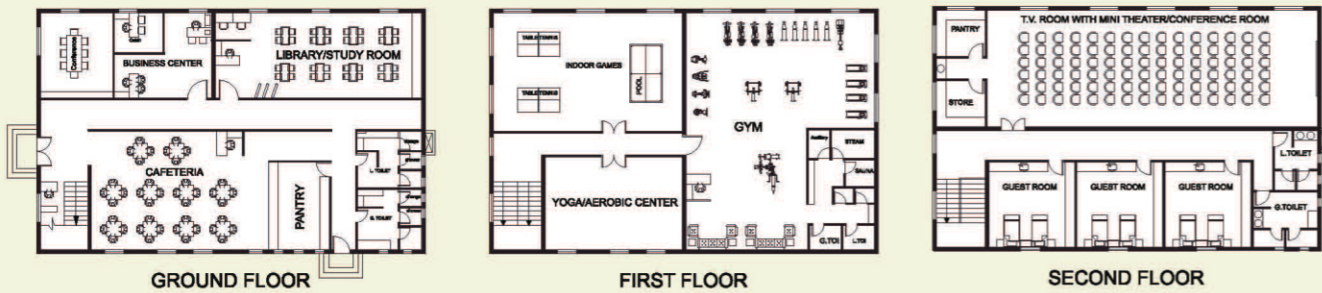
## Green Features

- Avenue Plantation
- Water Treatment Plant
- Water Harvesting Pits

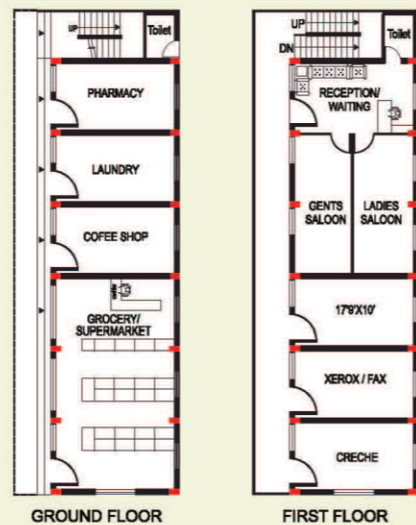




## Club House Plans



## Shopping Complex



## Our Other Residential Projects Apartments

- 'SPLENDOUR' is a Luxury Apartment Project with 480 Luxury Apartments located at Gajularamaram, near Kukatpally.
- 'EMERALD HEIGHTS' is a Luxury Apartments Project with 876 Apartments located at Pocharam (near Singapore Town Ship) & Infostys SEZ.
- 'LOTUS HOMES' 533 Apartments located at Bandlaguda, near Nagaram.
- 'PARADISE' 520 Apartments Located at Hayatnagar, L.B.Nagar.
- 'ELEGANCE' 800 Luxury Apartments located at Gajularamaram, Kukatpally.
- 'SERENE PARK' 800 Apartments at Ghatkesar, near Singapore Township & Infostys SEZ.
- 'EDIFICE' 2000 Luxury Apartments located at Shambupur, near Bachupally, close to Miyapur, Hi-tech City.
- 'ROCK HEIGHTS' 1100 Apartments at Laxmiguda, near Chandrayangutta & Shamshabad International Airport .
- 'STERLING HEIGHTS' is a 756 Luxury Apartments project located at Gundla Pochampally, near Kompally.

## Plots / Villas

- 'STERLING HOMES' is a 91 Duplex / Triplex Villas project located at Gundla Pochampally, near Kompally.
- 'HARMONY HOMES' located at Lalgadi Malakpet, near Ratnalayam Temple, Shamirpet has 68 Luxury Villas.
- 'GOLDEN COUNTY' above 357 villas located at Rampally, near Singapore Township and Infostys SEZ.
- 'GOLDEN MEADOWS' Open Plots located at Bibinagar, Ghatkesar.

Please visit our website [www.modibuilders.com](http://www.modibuilders.com) for latest information.



## Modi Builders

4th floor, Ashoka Hi-Tech Chambers,  
8-2-120/76/1/B/16,17,18, Road No.2,  
Banjarahills, Hyderabad-500 034.  
Ph : 040-6633 3111 / 888, 6633 6633  
Fax : 040-2354 1452, [www.modibuilders.com](http://www.modibuilders.com)  
E-mail : [sales@modibuilders.com](mailto:sales@modibuilders.com)

Site Office :



At Aushapur Near Ghatkesar