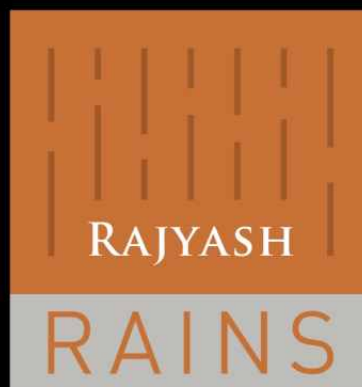


2 & 3 BHK BLUES & GREENS LIVING





IT'S
EVERYTHING
YOU'VE EVER
ASPIRED FOR



ABOUT RAJYASH GROUP

The Rajyash Group is one of the leading real estate group of Gujarat, both in terms of residential as well as commercial. Rajyash group has completed more than 75 projects of 9 million sq.ft. construction area with experience In more than two decades which has created different identity in real estate sector. The group has more than 10,000 happy and satisfied families powered by TQR policy.

T - transparency Q - quality R - reputation.

The group has changed the skyline of Ahmedabad as well as earned the respect of the city with a legacy synonymous with excellence, innovation and transparency. Choicest locations, perfect planning and immaculate implementation have ensured value for money for its customers. The group has systematically built on its credibility and good will, with every project it has increased over the years. Each one being a true testament in innovation, design and construction.

All directors has always implemented the latest technology with Innovative ideas towards making a difference to society by providing services that will uplift the standard of living and cover basic needs.

RAJYASH - "Excellence Endures"



"Transparency is an essence of life."

- All properties to be sold on carpet + wall area instead of super build up
- No hidden costs



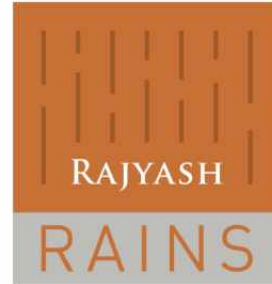
"Quality means doing it right when no one is looking."

- Planning by qualified and renowned consultants
- Most reliable, solid and sustainable construction
- Aesthetically rich and practical design concept
- MNC brand fitting and fixtures



"With good reputation, you can excel without any competition."

- Rajyash group has completed more than 75 projects of 9 million sq.ft. construction area with experience In more than two decades which has created different identity in real estate sector.
- The group has more than 10,000 happy and satisfied families powered by TQR policy.



EMBRACE THE EXQUISITE HUES OF BLUE & GREEN

Located near riverfront and surrounded by lush greenery, these remarkable 2 & 3 BHK residences present you with mesmerising views of blue and green to enjoy for a lifetime.



River front living is not a dream anymore... It's a beautiful reality now.

That's my dream house

Next to riverfront!

Amazing

I see future

Get surrounded by lush green landscapes. You truly get to live in the lap of nature.

Developing Ahmedabad

I simply love it!



A MAGNIFICENT ENTRANCE FOR FABULOUS FIRST IMPRESSION

EXCLUSIVE RESIDENCES
SERENE GARDEN
THOUGHTFUL AMENITIES
AMAZING LOCATION

You don't just step into a luxurious residence.
You enter a fine world of utmost comforts where
happiness and peace of mind is guaranteed.





BEAUTIFULLY DESIGNED RESIDENCES. ADORNED BY STUNNING VIEWS.

Rajyash Rains is a glorious architectural creation that is striking to behold and truly delightful to inhabit. These wonderful abodes indeed inspire a fine living.





GORGEOUS LANDSCAPE TO LIFT YOUR SPIRITS

LANDSCAPE GARDEN
CHILDREN PLAY AREA
GAZEBO

A lush landscape that stimulates the imagination, celebrates the land, evokes a sense of bliss and instils joyfulness. It truly soothes mind, body and soul.





IT'S A HOME WHERE THE SERENITY TAKES OVER

A tranquil piece of nature placed in the center for everyone to enjoy. Play, jog or simply sit back and relax, it's a perfect space to spend some quality time, after a hectic day.

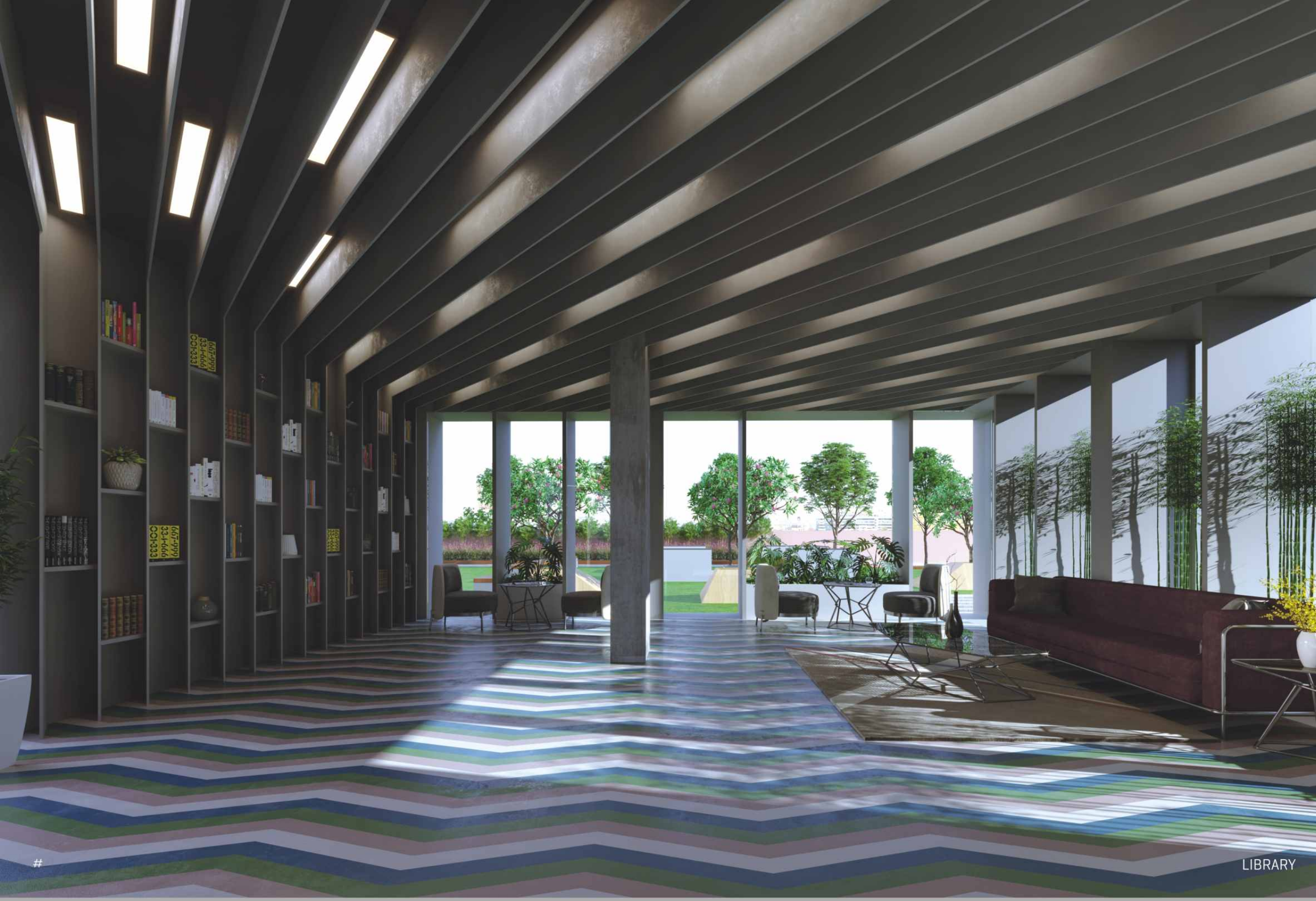




OPULENT FOYER FOR YOUR SPLENDID ARRIVAL

When you arrive at the imperial foyer, you will be greeted with sheer elegance and grandeur. It's a perfect portrayal of the luxury that is to follow.





LIBRARY

A WORLD AS EXCLUSIVE AND PRECIOUS AS YOU

With a location few can rival, an elevation that leaves you spellbound, greenery that envelopes you in a warm hug and a world-class lifestyle at your disposal, each moment that you live at Rajyash Rains is a rare privilege.



GYMNASIUM

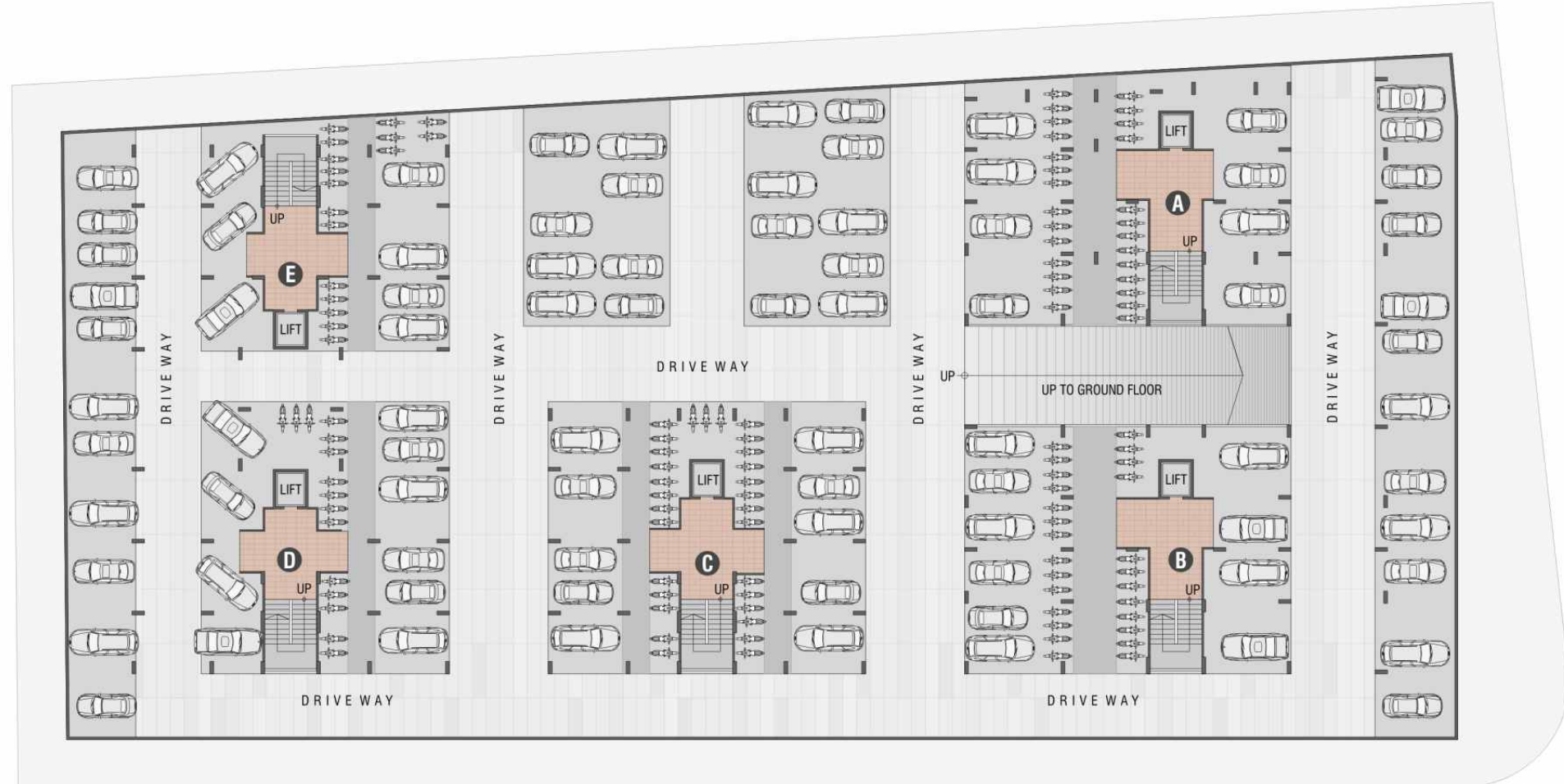


#



PLAN PRESENTATION

***BASEMENT
PLAN**



***GROUND
FLOOR PLAN**

LEGEND

- 01 SECURITY CABIN
- 02 ENTRANCE FOYER
- 03 SEATING AREA
- 04 LOUNGE & LIBRARY
- 05 GYM
- 06 PARTY LAWN
- 07 PERFORMING STAGE



40. FT. WIDE ROAD

30. FT. WIDE ROAD

*** TYPICAL FLOOR PLAN**



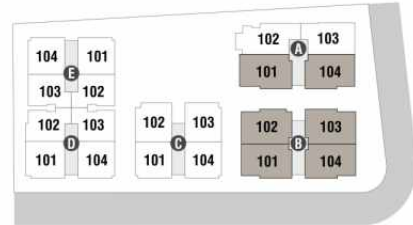
40. FT. WIDE ROAD

30. FT. WIDE ROAD

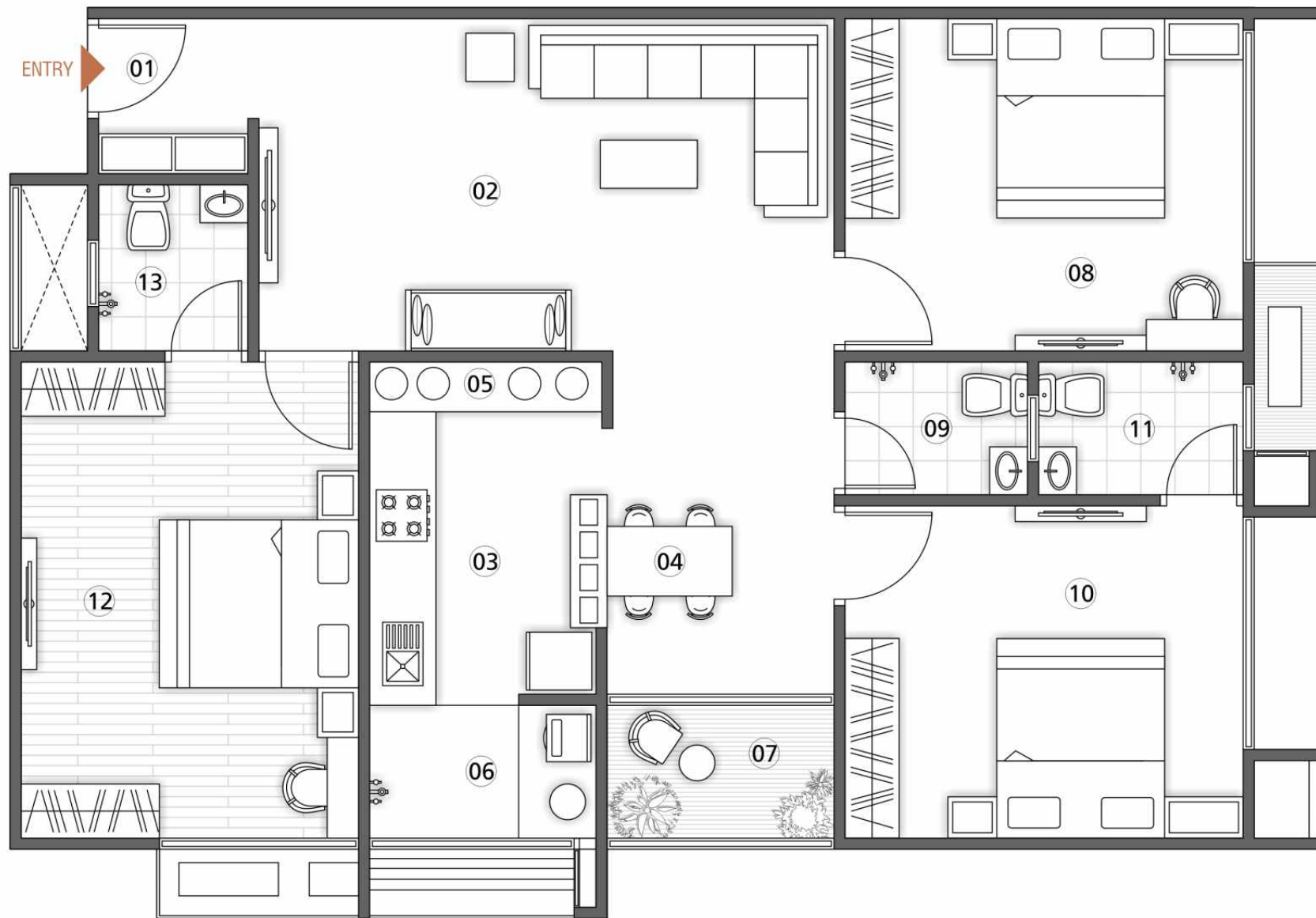
AMC GARDEN

***3 BHK**
UNIT PLAN

BLOCK - A & B

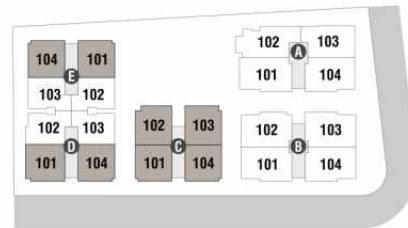


01	ENTRANCE	4' 6" X 4' 9"
02	LIVING ROOM	17' 0" X 10' 0"
03	KITCHEN	7' 0" X 8' 0"
04	DINING	7' 0" X 10' 0"
05	STORE	7' 0" X 2' 0"
06	WASH	7' 0" X 4' 0"
07	BALCONY	7' 0" X 4' 0"
08	BEDROOM-1	12' 0" X 10' 0"
09	TOILET	5' 6" X 4' 0"
10	BEDROOM-2	12' 0" X 10' 0"
11	TOILET	6' 0" X 4' 0"
12	BEDROOM-3	10' 0" X 14' 0"
13	TOILET	4' 6" X 5' 0"

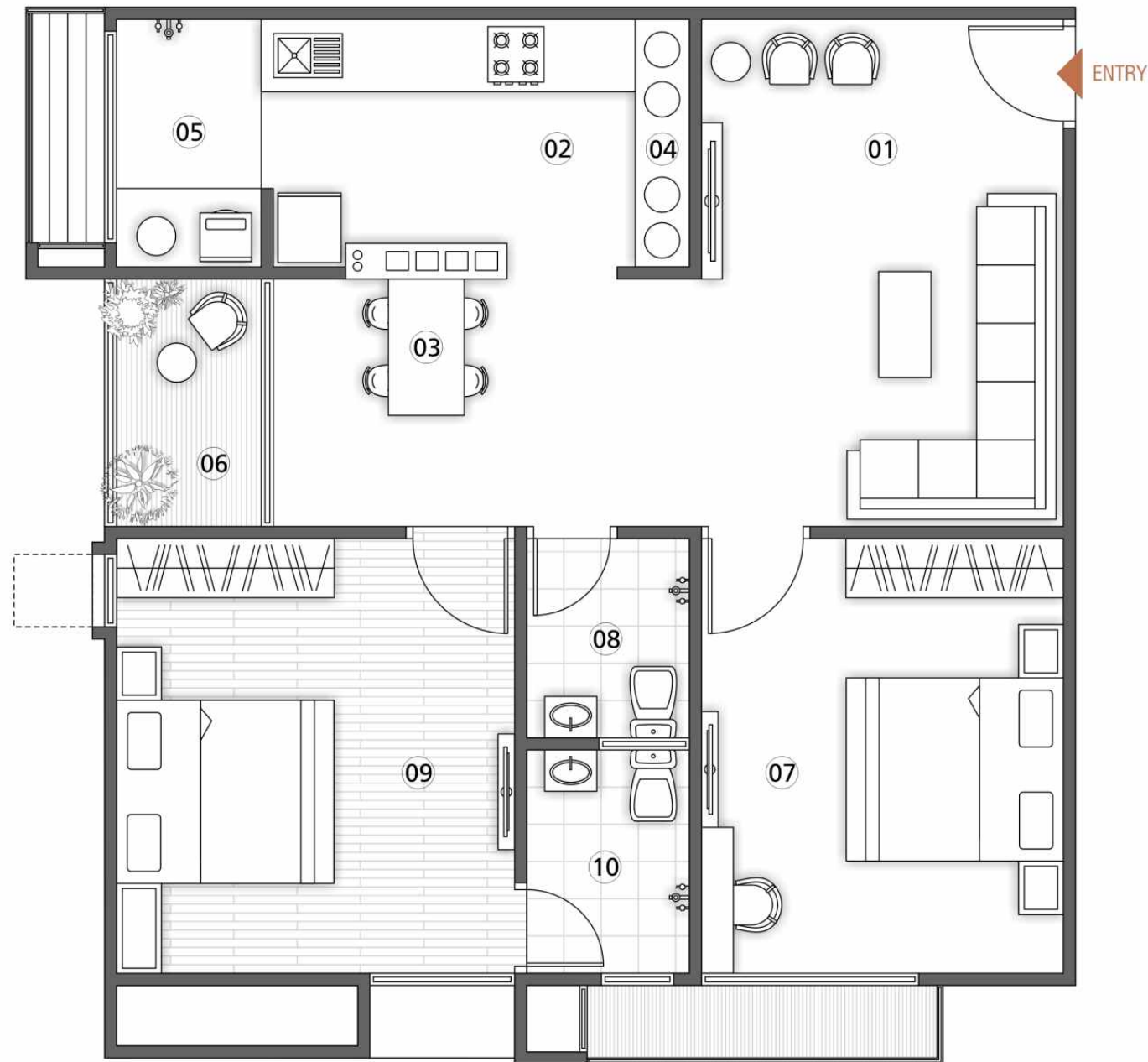


***2 BHK**
UNIT PLAN

BLOCK - C, D, E

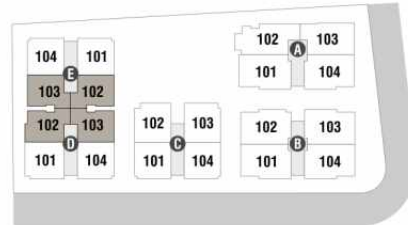


01	LIVING ROOM	10' 0" X 14' 0"
02	KITCHEN	9' 9" X 7' 0"
03	DINING	11' 9" X 7' 0"
04	STORE	7' 0" X 2' 0"
05	WASH	4' 0" X 7' 0"
06	BALCONY	4' 0" X 7' 0"
07	BEDROOM-1	10' 0" X 12' 0"
08	TOILET	4' 6" X 5' 6"
09	BEDROOM-2	11' 0" X 12' 0"
10	TOILET	4' 6" X 6' 0"

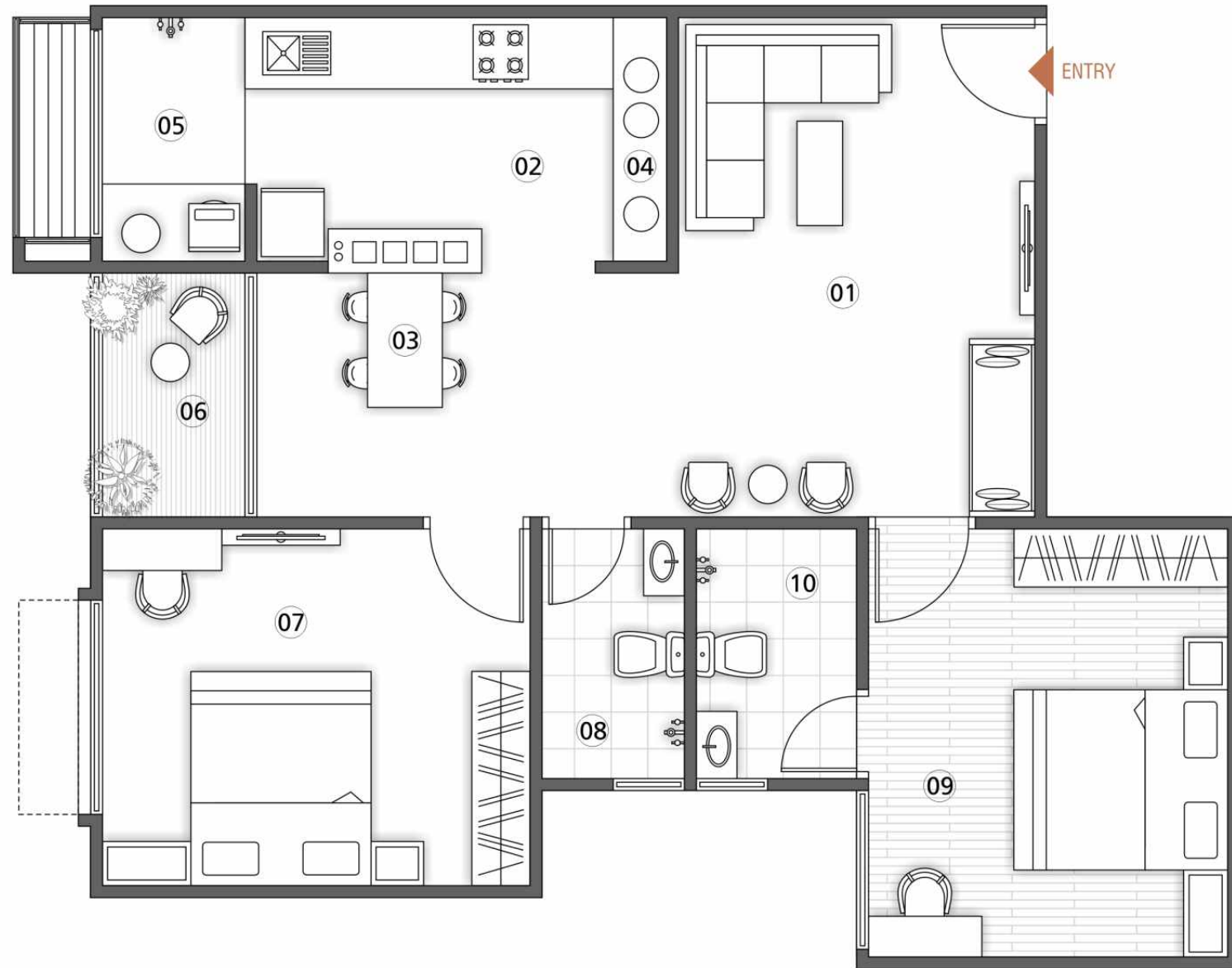


*** 2 BHK**
UNIT PLAN

BLOCK - D & E



01	LIVING ROOM	10' 0" X 14' 0"
02	KITCHEN	9' 9" X 7' 0"
03	DINING	11' 9" X 7' 0"
04	STORE	7' 0" X 2' 0"
05	WASH	4' 0" X 7' 0"
06	BALCONY	4' 0" X 7' 0"
07	BEDROOM-1	10' 0" X 12' 0"
08	TOILET	4' 6" X 5' 6"
09	BEDROOM-2	11' 0" X 12' 0"
10	TOILET	4' 6" X 6' 0"



SPECIFICATIONS



Flooring

- 2'.0" X 2'.0" Porcelain flooring in entire flat



Kitchen

- Granite platform with S.S. Sink and glazed tiles dado up to 2ft. height



Doors & Windows

- Decorative main door with wooden frame
- Other wooden doors and aluminum window



Bathroom

- Glazed tile dado up to 4ft. height in all toilets



Electrical

- Concealed copper wiring with sufficient electric points in all rooms



Wall Finishes

- External: Sand face plaster with acrylic paint
- Internal: Smooth finished plaster with white wash

DEVELOPERS NOTE

* All furniture / objects shown in the plan are for presentation & understanding purpose only. By no means, it will form a part of final deliverable products.

All the elements, objects, treatments, materials, equipments & color scheme shown are artisan's impression and purely for presentation purpose. By no means, it will form a part of the amenities, features or specifications of our final products.

• GST, stamp duty, registration fees, advocate fees, parking charges, legal charges, torrent charges, maintenance charges & deposit will have to be borne by the members only.

• Any kind of external changes are strictly not allowed.

• All rights to alteration / modification in the design and specification are reserved by the developers and shall be binding to all purchasers

• This brochure is for general information and shall not form a part of any agreement

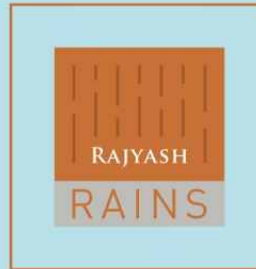
• All visuals, images, facilities and other details shown here are for presentation only and are subject to change by the developer without any obligation

• We consider 10 feet as 3 meter in all dimensions

• Subject to Ahmedabad jurisdiction.



SITE ADDRESS:
Near Rajyash Reeva,
B/h. G.B. Shah College,
Rajyash City, South Vasna,
Ahmedabad.



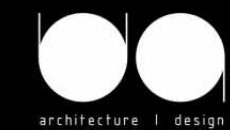
RECOGNIZED & AWARDED IN
2013 & 2017 WE CONTINUE THE EXCELLENCE

PROJECT BY: RAJYASH INFRASPACE

CORPORATE OFFICE: 305,405 Mauryansh Elanza, Nr. Parekh's Hospital,
Shyamal Cross Road, Satellite, Ahmedabad

CONTACT: 990 990 7272 / 7373

ARCHITECT



079 48909585
contact@uadesign.in
www.uadesign.in

STRUCTURAL CONSULTANTS



SARJAN CONSULTANTS
Industrial | Civil | Structural Engineers



UPCOMING
PROJECTS

RAJYASH CITY RESIDENTIAL & COMMERCIAL PROJECT



@ VASNA

@ CENTRAL BOPAL

@ SOUTH VASNA

ONGOING
PROJECTS

RAJYASH RISE COMMERCIAL PROJECT



THE RETAIL PARK (TRP) COMMERCIAL PROJECT



@ SHELA

@ SOUTH VASNA

@ SOUTH VASNA

@ CENTRAL BOPAL

@ S.G HIGHWAY



RAJYASH RATNA RESIDENTIAL PROJECT



RAJYASH RISE + CORPORATE OFFICE



STANZA RESIDENTIAL PROJECT



RAJYASH REEVA RESIDENTIAL PROJECT



UNIZA CORPORATE HOUSE

LANDMARK OF THE GROUP

RAJYASH CITY @ CENTRAL BOPAL



RAJYASH CITY @ SOUTH VASNA



MORE THAN **75** COMPLETED PROJECTS IN 2 DECADES.

BRINGING HAPPINESS TO OVER 10,000 FAMILIES



RAJYASH
Excellence Endures!

ISO 9001:2008 Certified Company