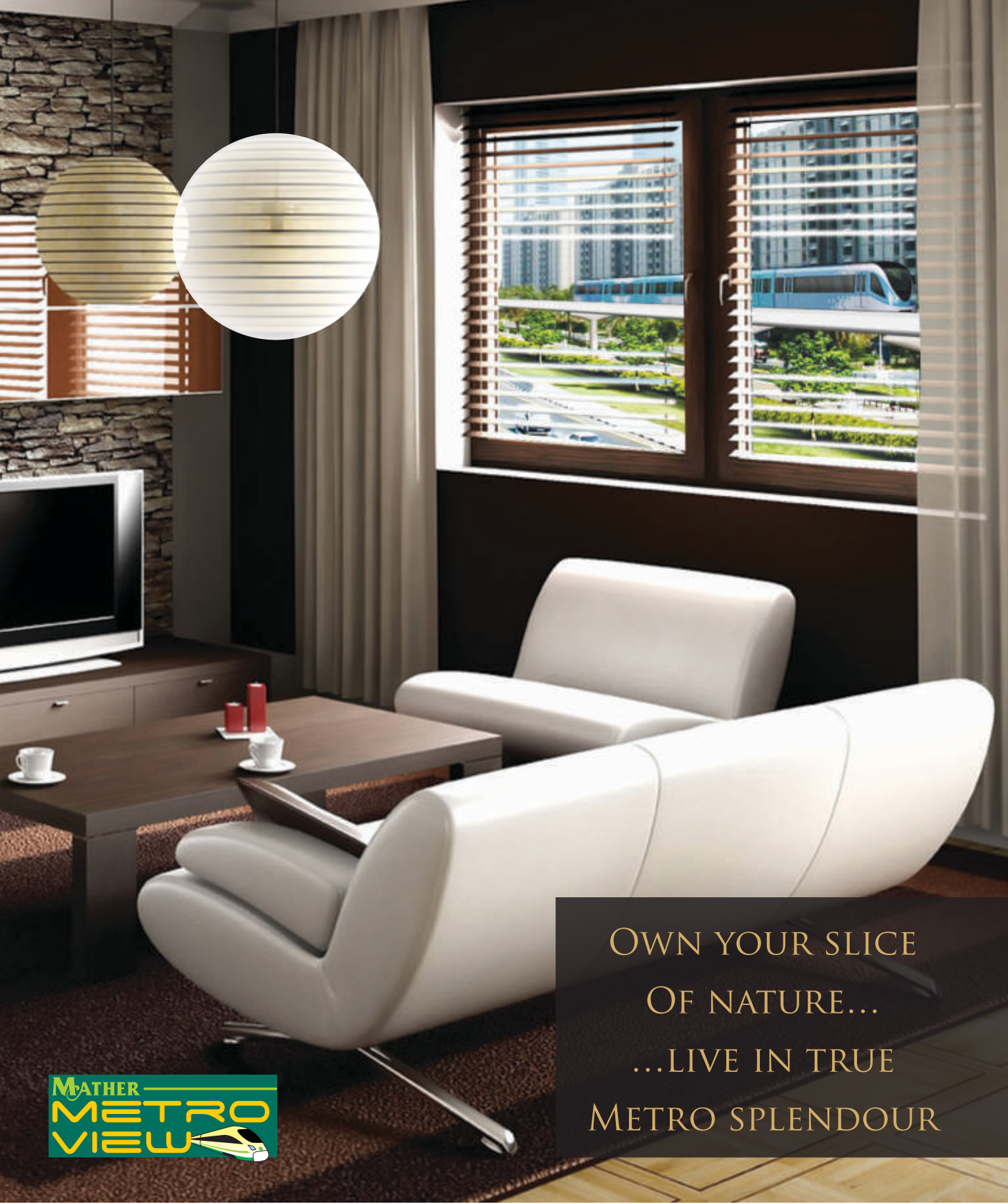




Mather built with Natures Consent



OWN YOUR SLICE
OF NATURE...
...LIVE IN TRUE
METRO SPLENDOUR





...A synonym for quality construction, lifestyle legacy

Mather Builders is one of the prominent builders in the region with high repute, which has enjoyed a remarkable track record in realty sector. Unique vision and solid experience in construction industry places Mather Builders among the most reliable builders in the God's Own Country KERALA.

Offering a wide range of sophisticated services blended with dedication, Mather Builders has carved out a niche in the realty industry. Our profound expertise, insights in our spheres of operation and the warmth and hospitality maintained in our customer relations make us one of the most customer-savvy companies in realty industry. Strongly built on values, we believe in performance, courage, creativity & harmony.

The ultimate metro ambience

Life in Kochi is soon to be redefined AS THE Metro Rail chugs in. Opening new vistas of transit, the Metro Rail will bring with it new tracks of progress, development and luxury.

Life will be faster, more exciting and more convenient than ever. Life and business in the city will rise to new heights of sophistication. National Highway- 47 overlooking the imminent Metro Rail track, is going to witness breathtaking progress and will rise to greater prominence. An array of magnificent deluxe star hotels, super -specialty hospitals, sprawling malls, world class car showrooms, top-notch educational institutions and a bunch of other conveniences make the NH one of the most happening and coveted residential spots linking Kochi & Aluva. At this strategic spot, the finest urban conveniences are at your door steps. The International Airport, CIAL Golf Course, Aluva Railway Station, KSRTC Bus Stand, Hospitals, reputed educational institutions, the serene Aluva River and many tourism spots surround the life here, making it a dream come true.



Tastefully designed villas, blending nature

Mather Metro View Villas, coming right at one of the finest spots in the emerging metro on the laps of the Queen of the Arabian Sea Kochi, are aesthetically conceived and elegantly designed with high quality home accessories and fittings. The prestigious project from Mather Builders consists of an array of two storied villas with their size ranging from 2300 sq ft to 2800 sq ft, being built in a space between 5.50 and 7 cents of land.



Accessibility

- Kochi Metro Railway station is just across the road
- Garage City Bus Stop
- The famous Aluva Puzha (The Periyar River) just across the road
- Churches, Masjids and temples around the corner
- Aluva Market - 1 km.
- Aluva Railway Station - 1.5 km

Amenities

- Swimming Pool
- Club House
- Multy Gym
- Children's Play Area
- Badminton Court
- Wide Tar Roads
- Street lights
- Drinking water from own source and from KWA
- 3phase connection with project Transformer
- Round the clock security etc.



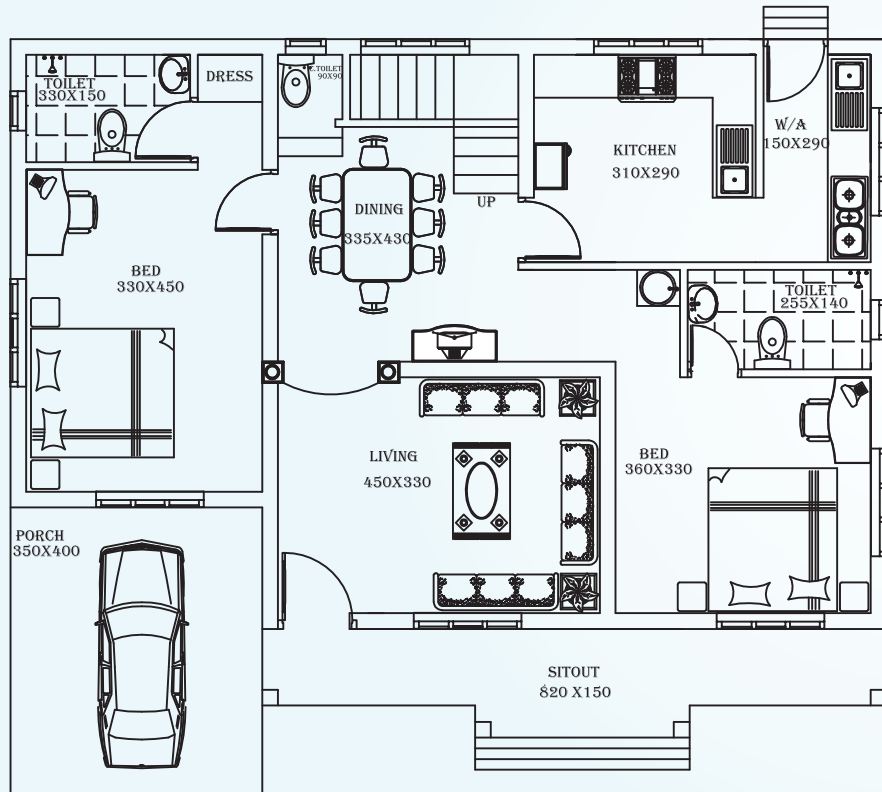


G-3, Thihama Center, N.H Bypass, Near E M C, Vennala P.O , Cochin-682 028

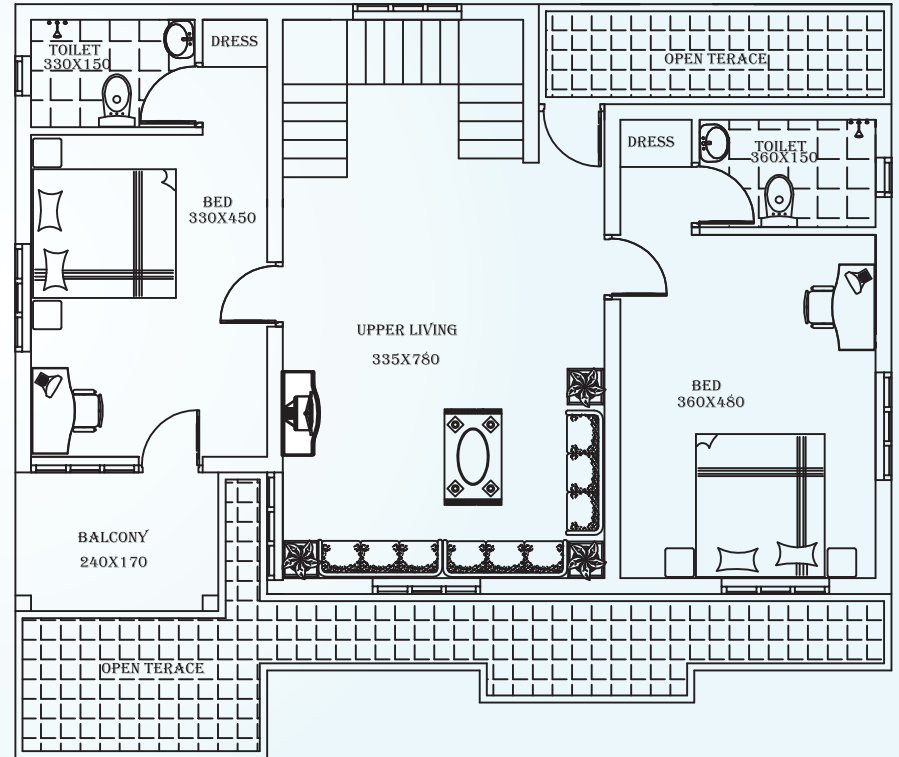
Phone: 9847610001 Office: 0484 329 9595, 280 9696

E- mail : mm@matherbuilders.com www.matherbuilders.com

2300 SQ.FT IN 5.50CENTS

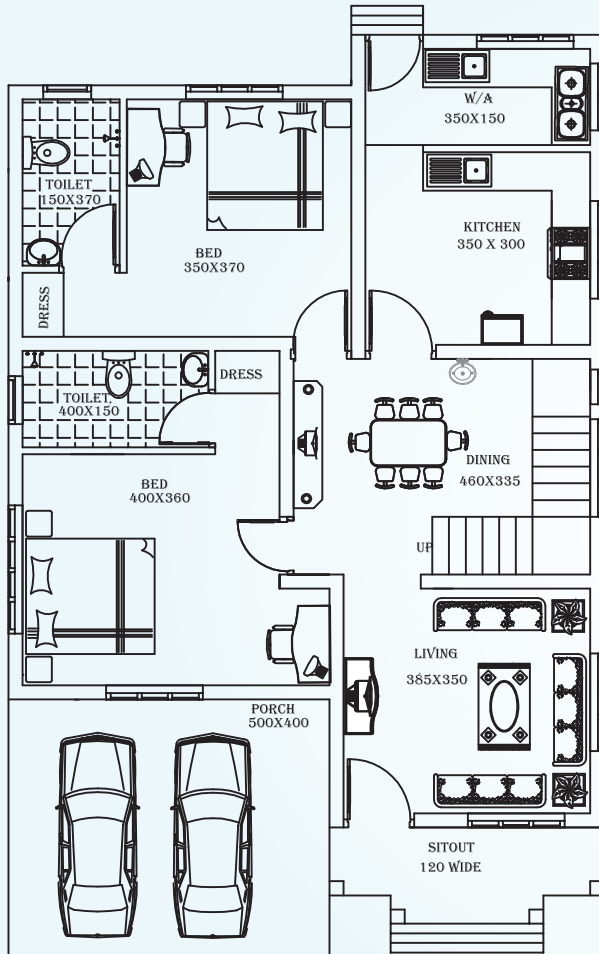


GROUND FLOOR PLAN
PLINTH AREA-120.00 M2 (1290.00 SQFT)

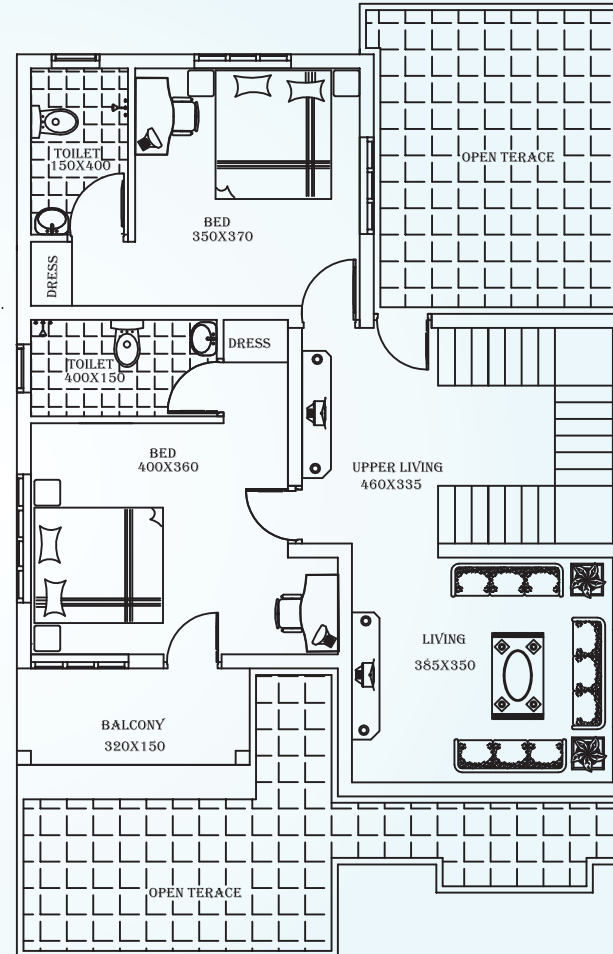


FIRST FLOOR PLAN
PLINTH AREA - 93.00 M2 (1009.00 SQFT)
TOTAL PLINTH AREA - 214.00 M2 (2300.00 SQFT)

2300 SQ.FT IN 5.50CENTS

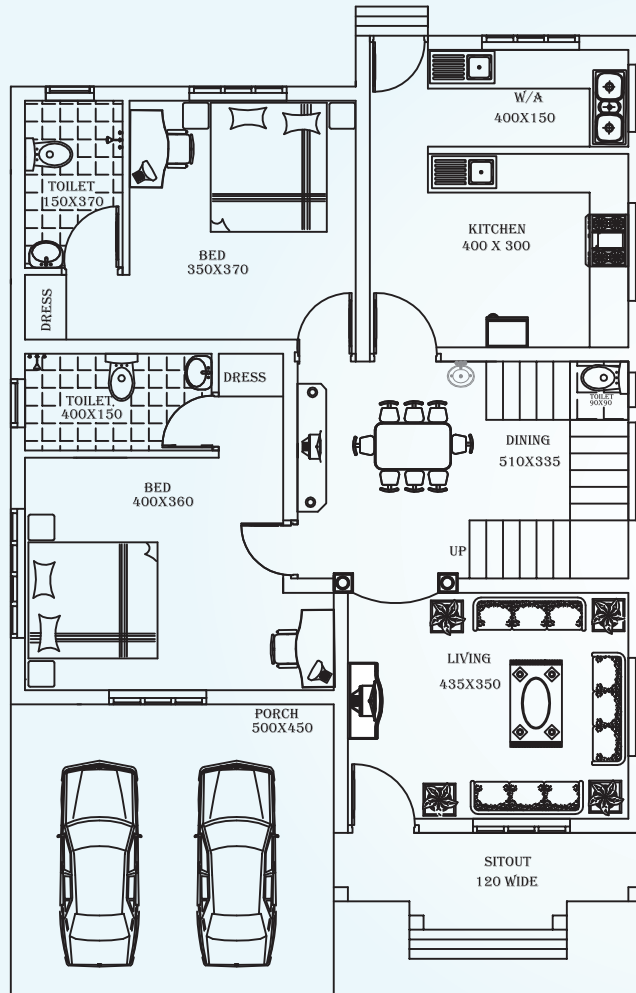


GROUND FLOOR PLAN
PLINTH AREA-126.00 M2 (1356.00 SQFT)

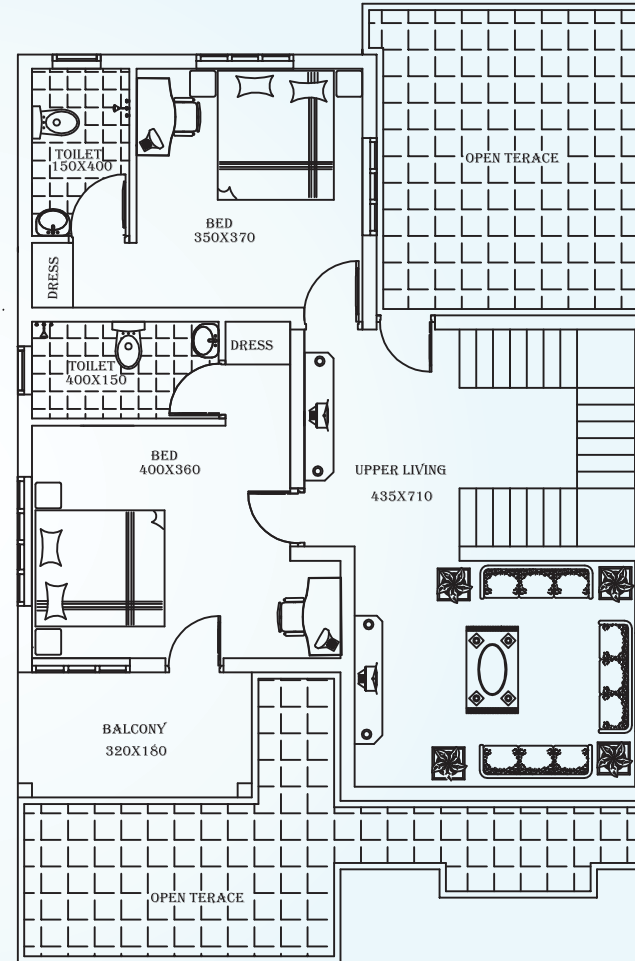


FIRST FLOOR PLAN
PLINTH AREA-89.00 M2(944.00 SQFT)
TOTAL PLINTH AREA-215.00 M2(2300.00 SQFT)

2500 SQ.FT IN 6 CENTS



GROUND FLOOR PLAN
PLINTH AREA-137.00 M2 (1475.00 SQFT)



FIRST FLOOR PLAN
PLINTH AREA-94.00 M2(1025.00 SQFT)
TOTAL PLINTH AREA-231.00 M2(2500.00 SQFT)

