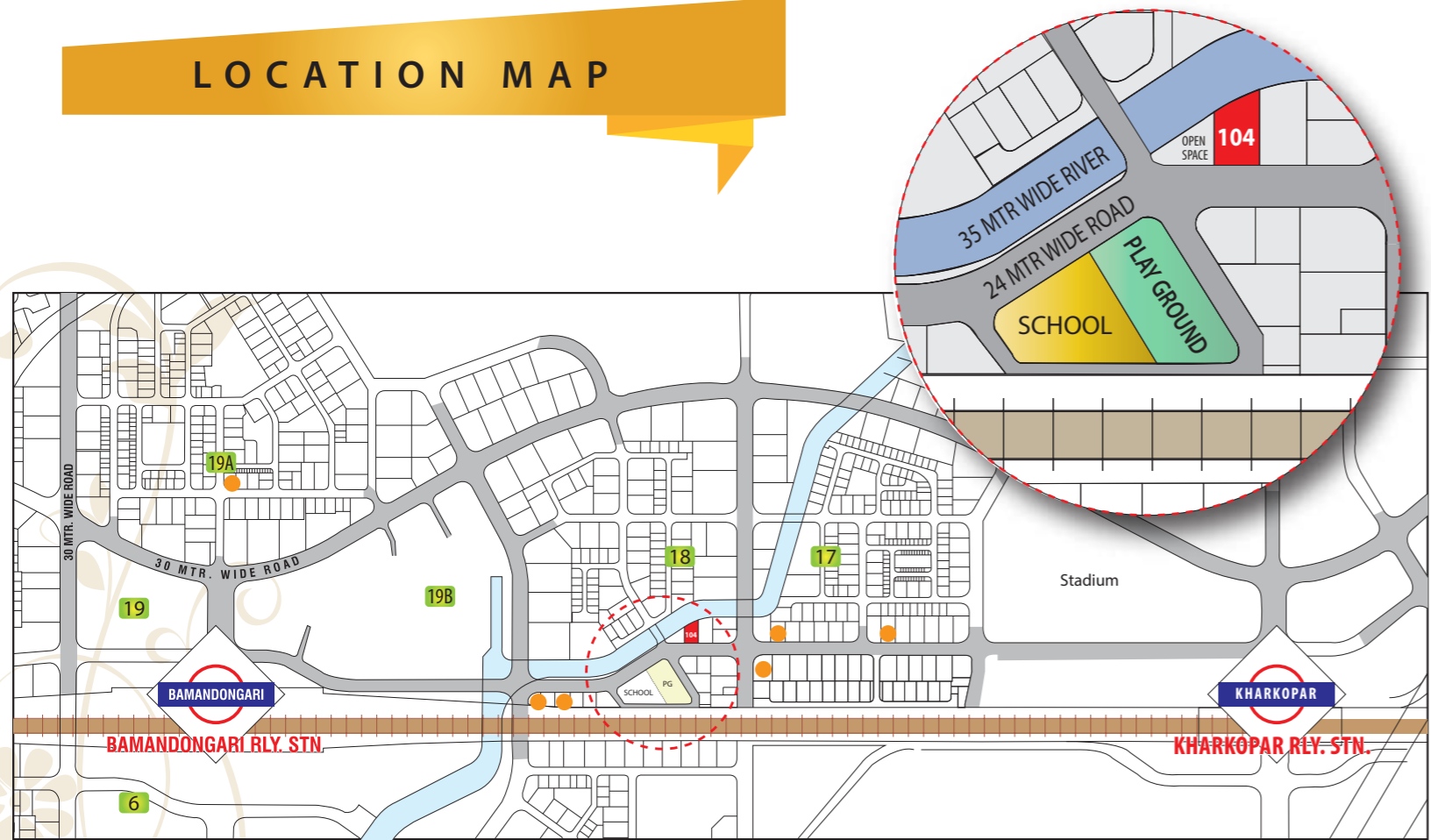


LOCATION MAP



# Krishna Sarang Galaxy

Plot No. 104, Sector - 18, Ulwe, Navi Mumbai.

MahaRERA No. P51700009475



Project by



Office : Plot No. 33, Sector-17, Ulwe, Navi Mumbai  
 Site : Plot No. 104, Sector - 18, Ulwe, Navi Mumbai  
 Email : krishnasaranggalaxy@gmail.com  
 www.preciousgroup.com

Call us on : 9833669987 | 9773519052 | 8080115515 | 8080889999

Architect | FASCINATE

RCC Consultant | AGARKAR CONSULTANTS

This brochure is purely conceptual, indicative and not a legal offering. All illustrations & pictures are artist's impression only. The plans, drawings, amenities etc. are subject to the approval of respected authorities and may be changed without notification if necessary. The Promoter / Architect reserves the rights to add / desire / alter any items / details / specifications / elevation mentioned here in.

SHEMOL 771-981-9167/771-981-9168

## Krishna Sarang Galaxy

Krishna Sarang Galaxy – A Project by Precious Group & Sarang Group. A 13 storied luxurious project located on 24 Mtrs wide Main Station road of Ulwe. 3 side open plot giving it an advantage in form of Excellent Ventilation & illumination. Front face open to 24 Mtrs wide road followed by School & Playground, Second Face open to Social Facility Plot i.e. Garden, Community Centre etc., & 3rd face open to the only River passing through Ulwe.

### Advantages

#### Project Advantage:

- Luxuries 13 stories project.
- All Bedrooms with attached toilets.
- 3 Level Amenities for Luxurious Living.
- 3 Side open Plot.
- Front facing – School & School Playground reserved plot.
- Adjacent to Social Facility plot. (Garden of Community centre etc.)
- Adjacent to the only river passing through Ulwe
- Security Surveillance system installed in the project making safe and secure for Children & Family.
- Regional Park Zone at a Distance of 800 Mtrs. Similar to Central Park – Kharghar.
- Approx. at a Distance of 600 mtrs from Bamanongri and Kharkopar Station
- Approx. 400 mtrs from Ramsheth Thakur International Sports Complex

#### Project Connectivity Advantage:

- Navi Mumbai International Airport in close vicinity.
- Trans Harbour Sea Link connecting Mumbai (Wadala - Sewri) at 2 minutes Drive. Connecting Wadala to our Project in 20 minutes.
- 8 minutes Drive from Seawoods and Belapur Railway Station
- Proposed Harbour Railway connecting Seawood – Ulwe – Uran. (Length - 28.3Km)
- Navi Mumbai SEZ at 2 minutes drive
- A coastal expressway (PALM BEACH road type) connecting Ulwe with Seawoods is Proposed by CIDCO

### The Amenities

#### Building:

- Well designed entrance lobby
- Automated Elevators with Auto rescue device.
- Texture External Building dead walls.

#### Apartments:

- Vitrified tile flooring in Living Room & Bedrooms.
- Gypsum Finished internal walls with acrylic paint.
- Elegant Laminated Main door & Bed room Doors.
- Anodized Aluminium sliding French windows with mosquito net.
- TV and telephone points in Living room & Bed rooms.
- Electrical point for Air conditioners in Living room & Bed room.

#### Kitchen:

- Vitrified tile flooring
- Granite Platform with S.S. sink of branded make
- Designer glazed tiles of full height “Beam bottom level” above the platform.
- Provision for water purifier

#### Bathrooms:

- Naturally ventilated bathrooms with exhaust fan provision.
- Designer ceramic wall tiles (up to Door level)
- Anti-Skid ceramic flooring.
- Hot & cold water mixer.
- Superior Quality sanitary & CP fittings.

#### Leisure features for the Project:

- Located on 24 Mtrs (80 feet) wide Station Road.
- 3 Level Amenities for Luxurious Living.
- **Level One:** having reserved Space for Waking Track, Children’s Play area - Sand pit, Senior Citizen Sit out and many more.
- **Level Two:** Fitness Center.
- **Third Level:** Multi Utility room : Indoor Children’s Play Area, Meditation Room, Aerobics & Society Office.

#### Safety:

- Video Door Phone.
- Surveillance system at strategic locations(CCTV Camera).
- Main Door Lock which Open with Electronics Keys.
- Firefighting System.
- Generator backup for lifts & Designated common areas.
- Concealed copper wiring with modular switches
- MCB & ELCB’s

## 1 BHK FLAT

Artist's imagination



## 2 BHK FLAT

Artist's imagination



GATE

← 24.00 MT WIDE ROAD →

GATE

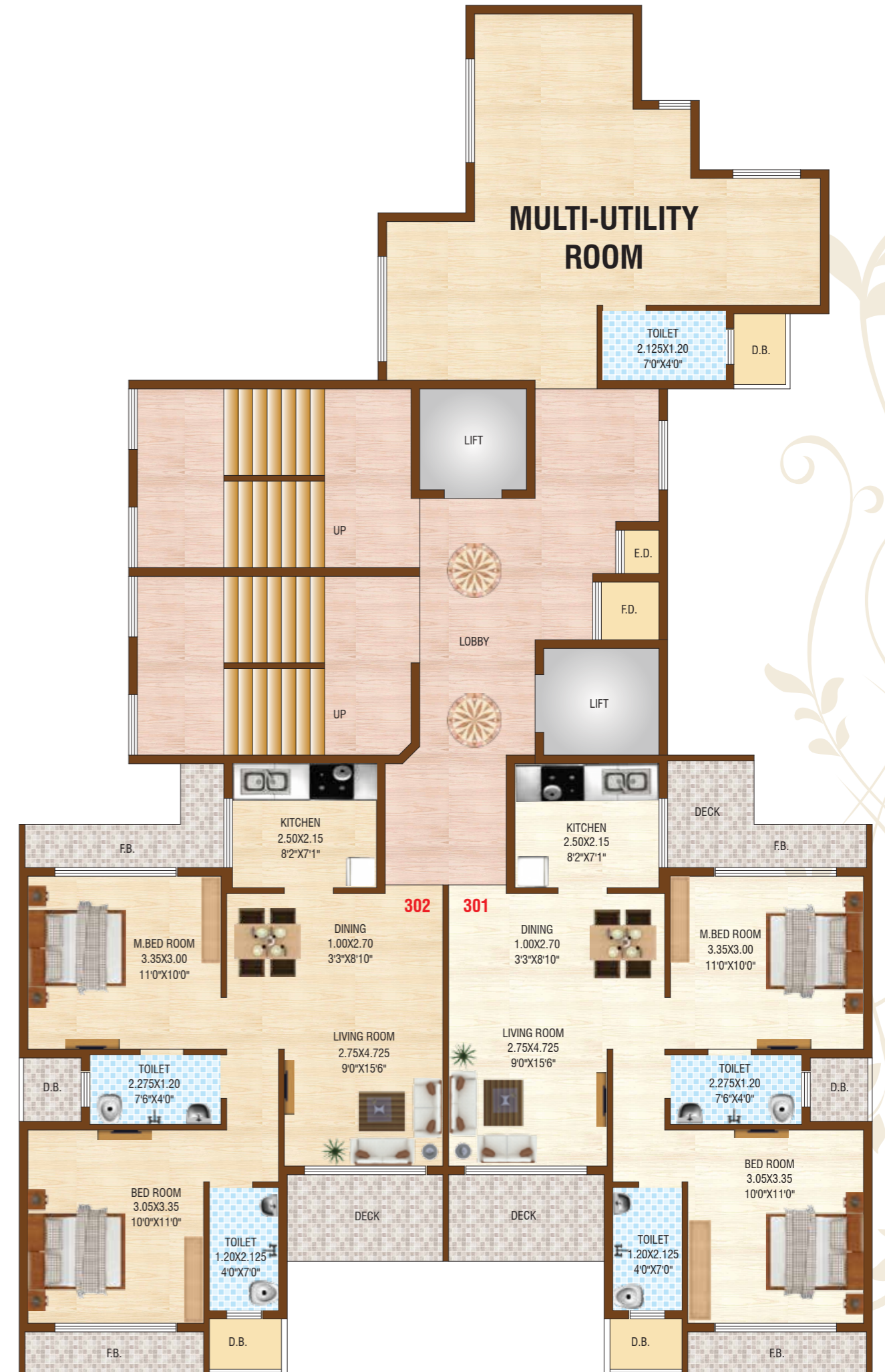
Krishna Sarang Galaxy

GROUND FLOOR PLAN



1<sup>ST</sup> FLOOR PLAN

Krishna Sarang Galaxy





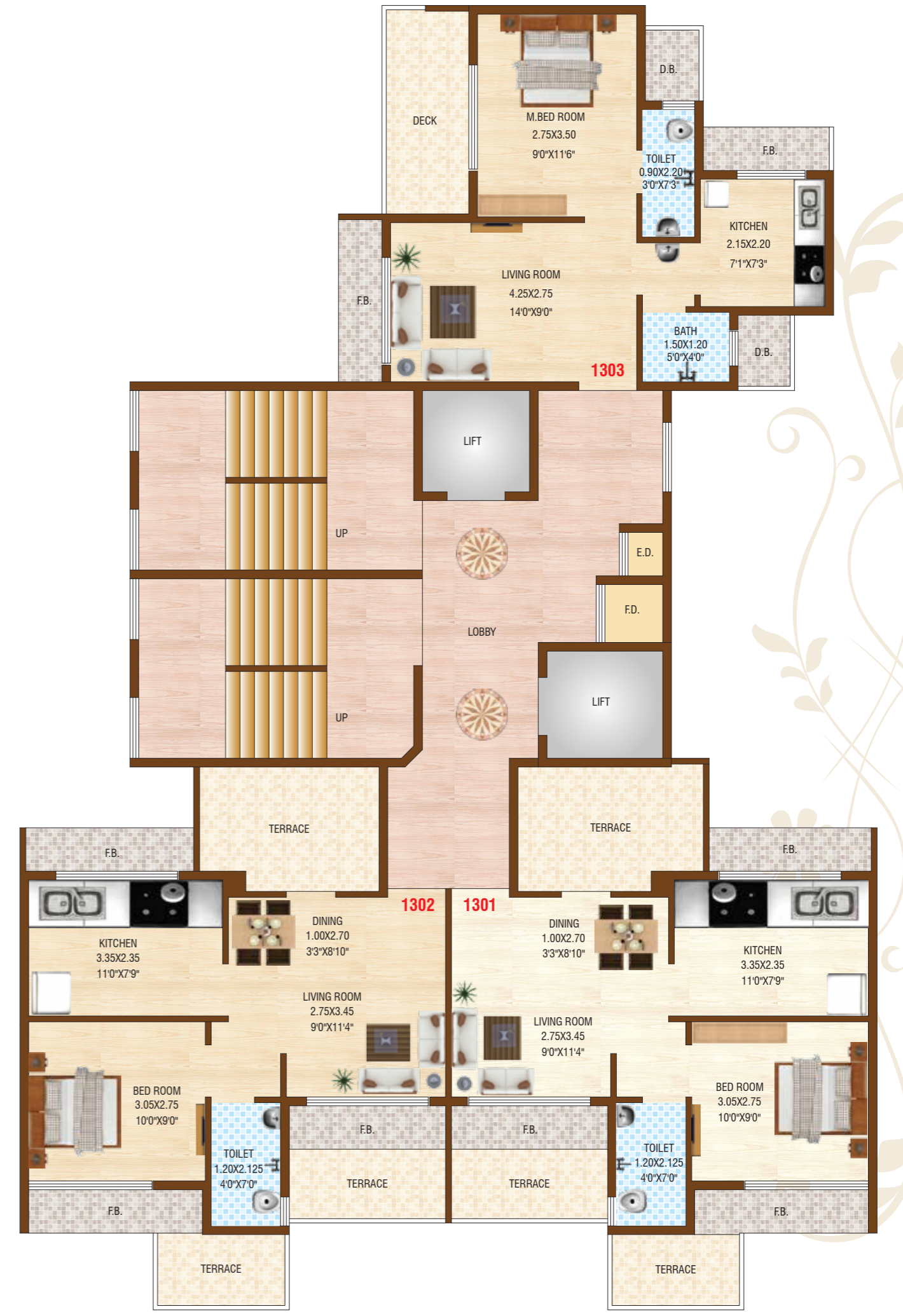
TYPICAL FLOOR PLAN

4<sup>TH</sup>, 6<sup>TH</sup>, 8<sup>TH</sup> & 10<sup>TH</sup>

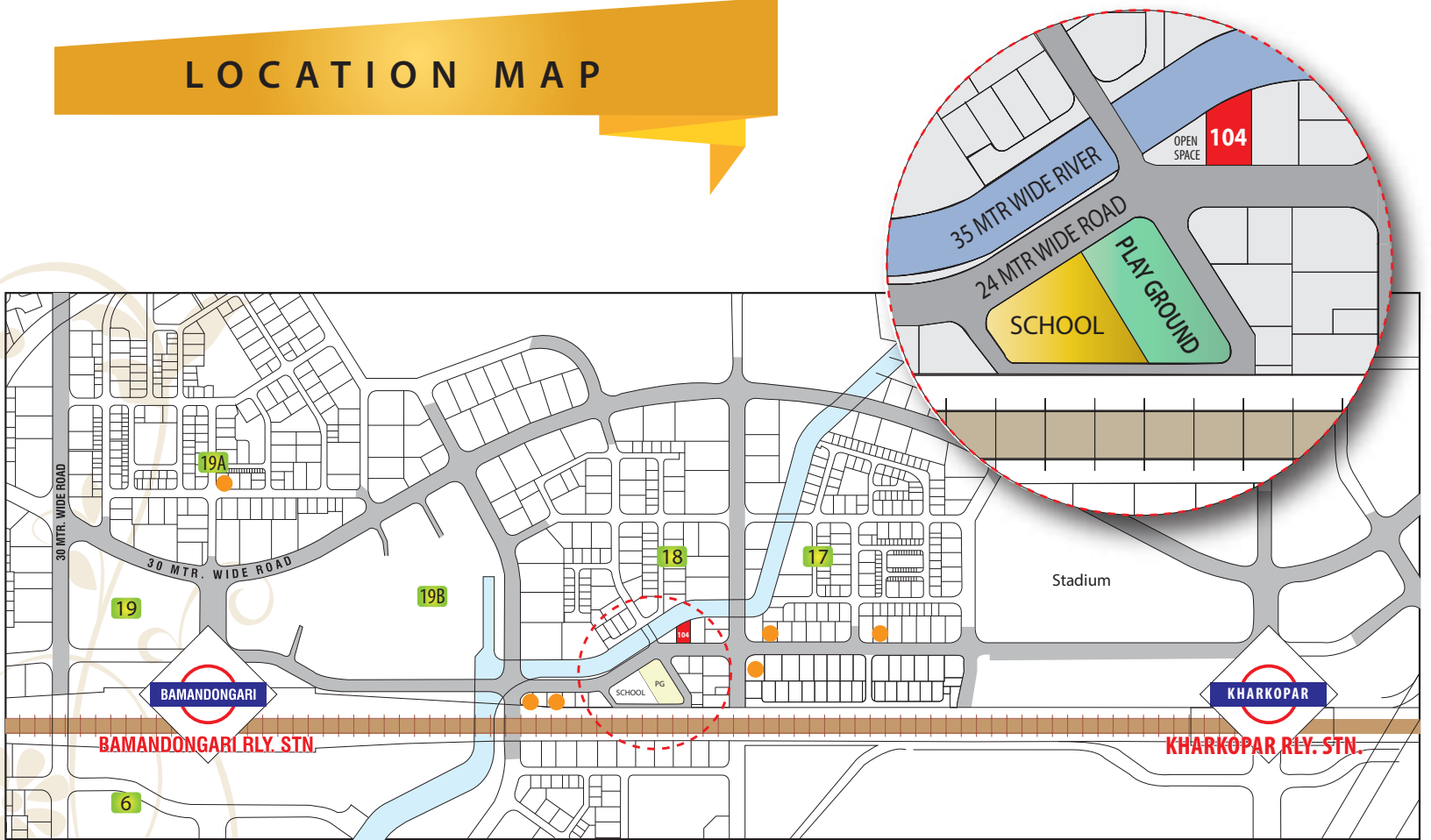


TYPICAL FLOOR PLAN

5<sup>TH</sup>, 7<sup>TH</sup>, 9<sup>TH</sup> & 11<sup>TH</sup>



# LOCATION MAP



Project by



Office : B-221/222, 2nd Floor, Sai Arcade, Opp. ST Depot, Panvel.  
 Site : Plot No. 104, Sector - 18, Ulwe, Navi Mumbai  
 Email : krishnasarangalaxy@gmail.com  
 www.saranggroup.in

**Call us on : 9833669987 | 9773519052 | 8080115515 | 8080889999**

Architect | FASCINATE

RCC Consultant | AGARKAR CONSULTANTS

This brochure is purely conceptual, indicative and not a legal offering. All illustrations & pictures are artist's impression only. The plans, drawings, amenities etc. are subject to the approval of respected authorities and may be changed without notification if necessary. The Promoter / Architect reserves the rights to add / desire / alter any items / details / specifications / elevation mentioned here in.