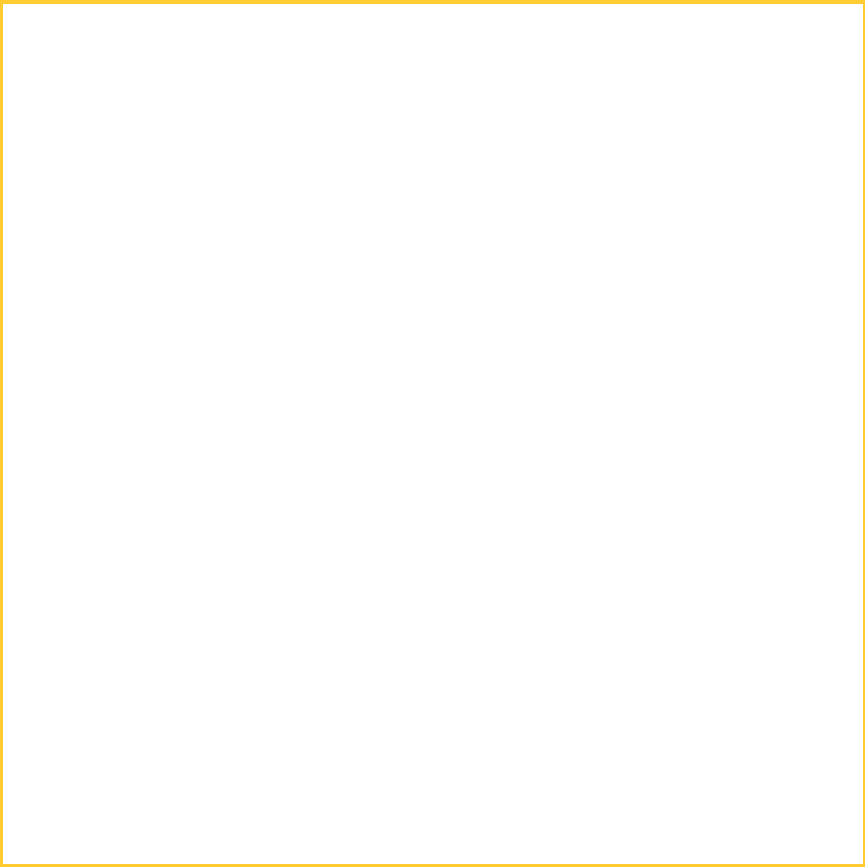
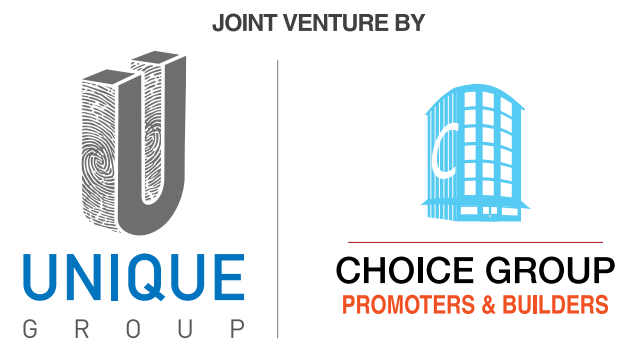




**1, 1.5 & 2 BHK HOMES
NEAR PORWAL ROAD,
LOHEGAON**



GOODWILL
NIRMITI
1, 1.5 & 2 BHK HOMES
NEAR PORWAL ROAD,
LOHEGAON



Goodwill Nirmiti, a quality offering from Unique Group and Choice Group is a project of **1, 1.5 & 2 BHK smart-sized homes** equipped with quality specifications and every modern amenity to make life comfortable. Strategically located at Lohegaon, **Goodwill Nirmiti** offers excellent connectivity and investment value. **Goodwill Nirmiti** is the ideal choice for the discerning home buyer!

METICULOUS PLANNING



The C building shown in the views is not the part of MAHA Rera Registration & NOT offered for SALE.

OUR HOME IS THE CELEBRATION OF OUR LOVE.

A home is where you spend quality time with your loved ones. Where every moment is filled with laughter and joy. Goodwill Nirmiti is your address to happiness. The carefully planned 1, 1.5 & 2 BHK homes, along with quality finishes and exciting features, provide the perfect setting for you to cherish those special moments with your loved ones. Make everyday a celebration of love at Goodwill Nirmiti!



LOVE

LAYOUT



BLDG C

BLDG B

BLDG A

CLUB HOUSE

The C building shown in the views is not the part of MAHA Rera Registration & NOT offered for SALE.

AESTHETIC ARCHITECTURE



OUR HOME IS THE FOUNDATION OF OUR HAPPINESS.

Goodwill Nirmiti comes fitted with features that nurture comfort: kitchen trolleys, video doorphone, lights & fans (one in each bedroom & living room), water purifier, provision for Tata Sky connection, etc. And outside, a long list of exciting amenities ensure your life is full of well-being & recreation with ample avenues for fitness, relaxation and social interaction.

Naturally, your Goodwill Nirmiti home will be your pride and joy.



HAPPINESS



AMENITIES

- Designer Clubhouse
- Gymnasium with AC
- Multi Utility Hall
- Mini Swimming Pool
- Party Lawn
- Gazebo
- Mini Skating Rink
- Mini Basketball Court
- Children's Play Area with Equipment
- Senior Citizens' Sit Out
- Table Tennis Table
- Mini Sand Pit
- Small Amphitheater
- Rainwater Harvesting
- Entrance Gate with Security Cabin
- Security with CCTV Cameras
- Fire Fighting System
- Auto Door Lifts with Genset Backup
- Genset Backup for Common Areas
- Tremix Internal Roads
- Sewage Treatment Plant (STP)

HIGHLIGHTS

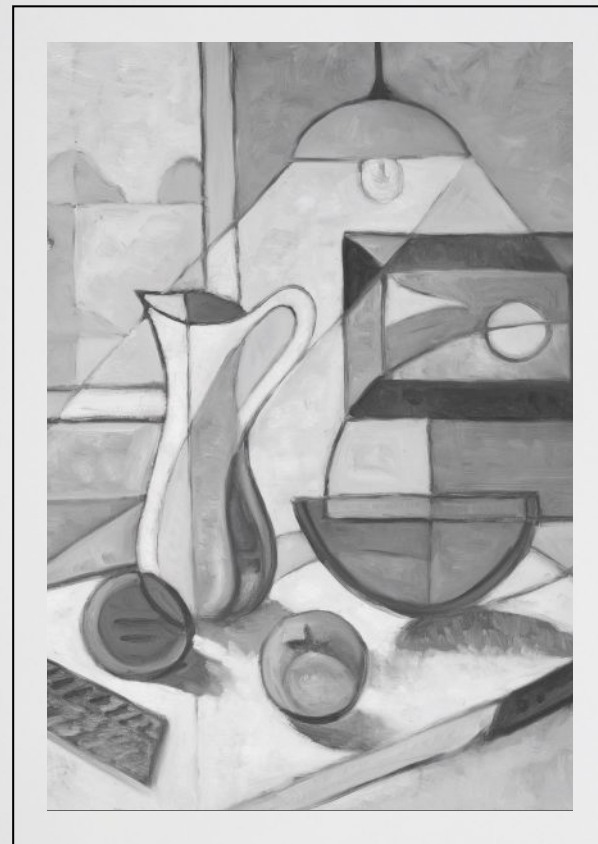
- Kitchen trolleys
- Water purifier
- G.I. French door in terrace
- Video door phone
- One Fan & tube light in bedrooms & living room
- Provision for Tata Sky connection



CLUBHOUSE



FOR AESTHETIC VIEW



SPECIFICATIONS

MASONRY

- River sand external plaster
- Gypsum finish internal walls

FLOORING

- Vitrified tile flooring
- Designer tiles in both the bathrooms

KITCHEN

- “L” shaped black granite kitchen platform
- Designer dado tiles in kitchen
- Provision for drinking water
- Provision for exhaust fan in kitchen

TOILET

- Anti-skid ceramic tiles in toilet & terrace
- CP & sanitary fittings of good quality
- Provision for exhaust fan in both the bathrooms

DOOR AND WINDOWS

- Laminated flush door
- Granite door frame in toilets
- 3 track aluminum windows with mosquito mesh
- M.S. safety grill for all windows
- 4-side granite window sill

ELECTRIFICATION

- Concealed copper wiring
- Electrical switches of good quality
- Television & AC point in master bedroom

PAINT

- Oil bound distemper in entire flat
- Acrylic paint on external walls

OTHER

- Solar heated water in both the bathrooms
- Piped- gas system

MY HOME IS THE REFLECTION OF MY SUCCESS.

Buying a home is the realization of a dream. An asset we strive for; a goal we plan for. Located at Lohegaon, close to schools, colleges, malls and business hubs, Goodwill Nirmiti promises excellent connectivity and convenience to make your life wonderfully easy. When you invest in a Goodwill Nirmiti home, you'll own a home that will be the pinnacle of your achievement; a symbol of your success.



SUCCESS

2 BHK



- 1 LIVING
- 2 KITCHEN
- 3 DRY BALCONY
- 4 DINING
- 5 TERRACE
- 6 COMMON TOILET
- 7 MASTER BEDROOM
- 8 MASTER TOILET
- 9 CHILDREN'S BEDROOM

1.5 BHK



- 1 LIVING
- 2 KITCHEN
- 3 DRY BALCONY
- 4 TERRACE
- 5 WC
- 6 MASTER BEDROOM
- 7 BATHROOM
- 8 CHILDREN'S BEDROOM

1 BHK



- 1 LIVING
- 2 KITCHEN
- 3 DRY BALCONY
- 4 TERRACE
- 5 WC
- 6 BEDROOM
- 7 BATHROOM



KEY DISTANCES

VISHRANTWADI CIRCLE	: 6 KMS	KALYANI NAGAR	: 9 KMS
AIRPORT	: 4 KMS	M. G. ROAD	: 13 KMS
D. Y. PATIL KNOWLEDGE CITY	: 1 KMS	PUNE STATION	: 12 KMS
VIMAN NAGAR	: 6 KMS	COMMERCE ZONE IT PARK	: 7 KMS
PANCHSHIL IT PARK	: 7 KMS	EON IT PARK	: 12 KMS



MAHA RERA Reg. No.
A Building P5210002683
B Building P5210003051

www.maharera.mahaonline.gov.in

The C building shown in the views is not the part of MAHA Rera Registration & NOT offered for SALE.

CREDITS

Architect
Cubix Architect

Legal Advisor
Adv. Chandrakant Nanekar

RCC Consultant
Subhash Tayal

Landscape Designer
Mahesh Chinchalkar

Media Consultants
Filament Communique

JOINT VENTURE BY



Registered Office:

Sr. No. 163/2A/2, Adarsh Colony, Shop No. 3, Plot No. 14, Srishti Homes, Vidya Nagar, Pune 411 032.

Site Address:

Sr.No.284/5/1 , Near Porwal Road , Lohegaon , Pune - 411047

Call: 8007 44 55 66. Website: www.uniquegrouppune.com Email: salesuniquegrouppune@gmail.com

Disclaimer: This perspective image may not be to scale or may not represent actual facade/elevation. The details of window, paints elevation features, landscaping, ground development, trees etc, in this perspective is an artist's impression and would be different to actual. The C building shown in the views is not the part of MAHA Rera Registration & NOT offered for SALE of building and development. The viewers affirm that he/she has not taken his/her decision of purchase/booking by viewing this perspective. This brochure is not a legal offering. The developers reserve absolute rights to change/cancel any plans, layouts, no. of floors and/or specifications at their discretion. Images are for representational purposes only.