



# ZENITH

VINAYAK GROUP PROPERTY

# LOCATION MAP

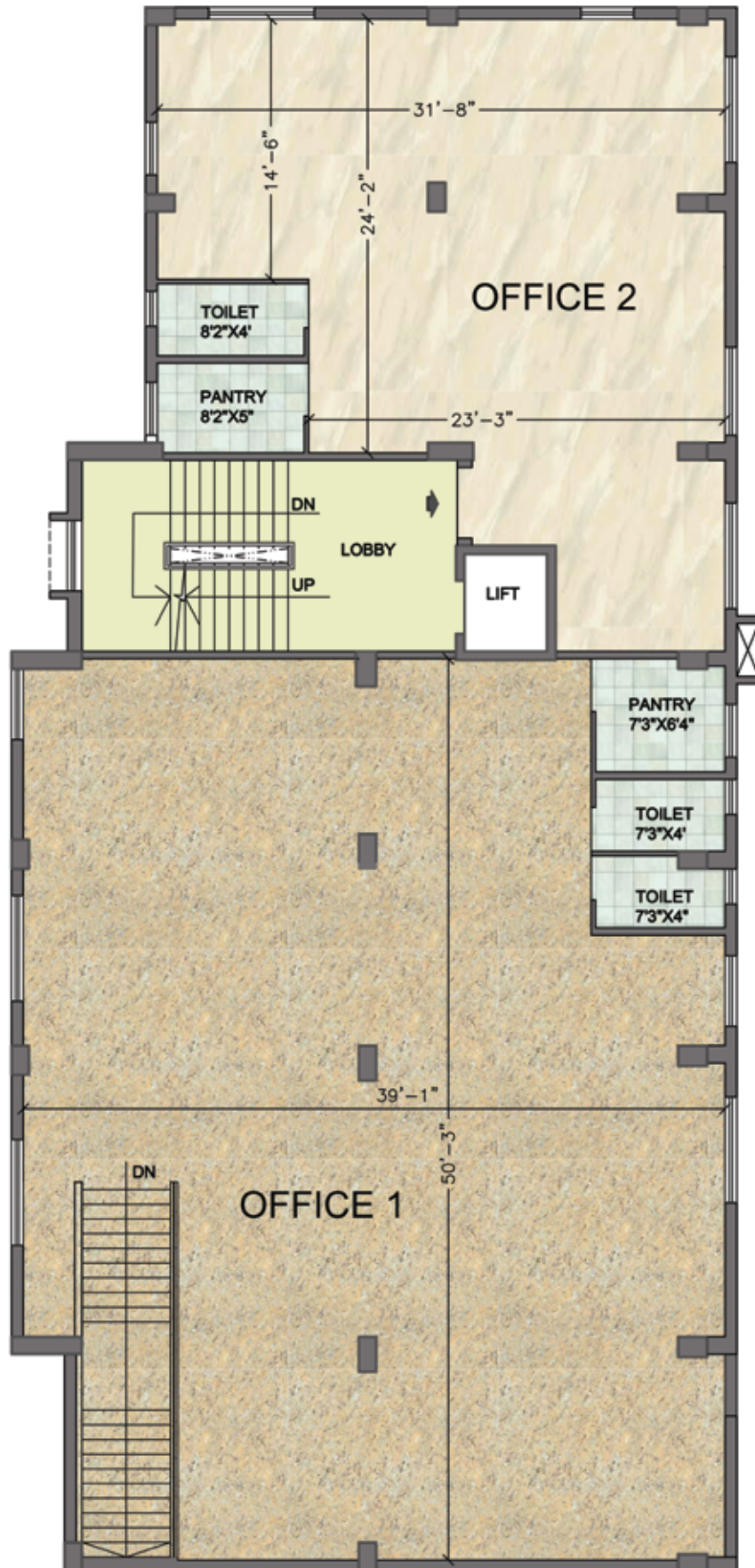


## KEY DISTANCES

Netaji Bhavan Metro	0.5 Kms.
Jatin Das Park Metro	0.4 Kms.
Forum Mall	1.5 Kms.
AJC Bose Road	1.4 Kms.

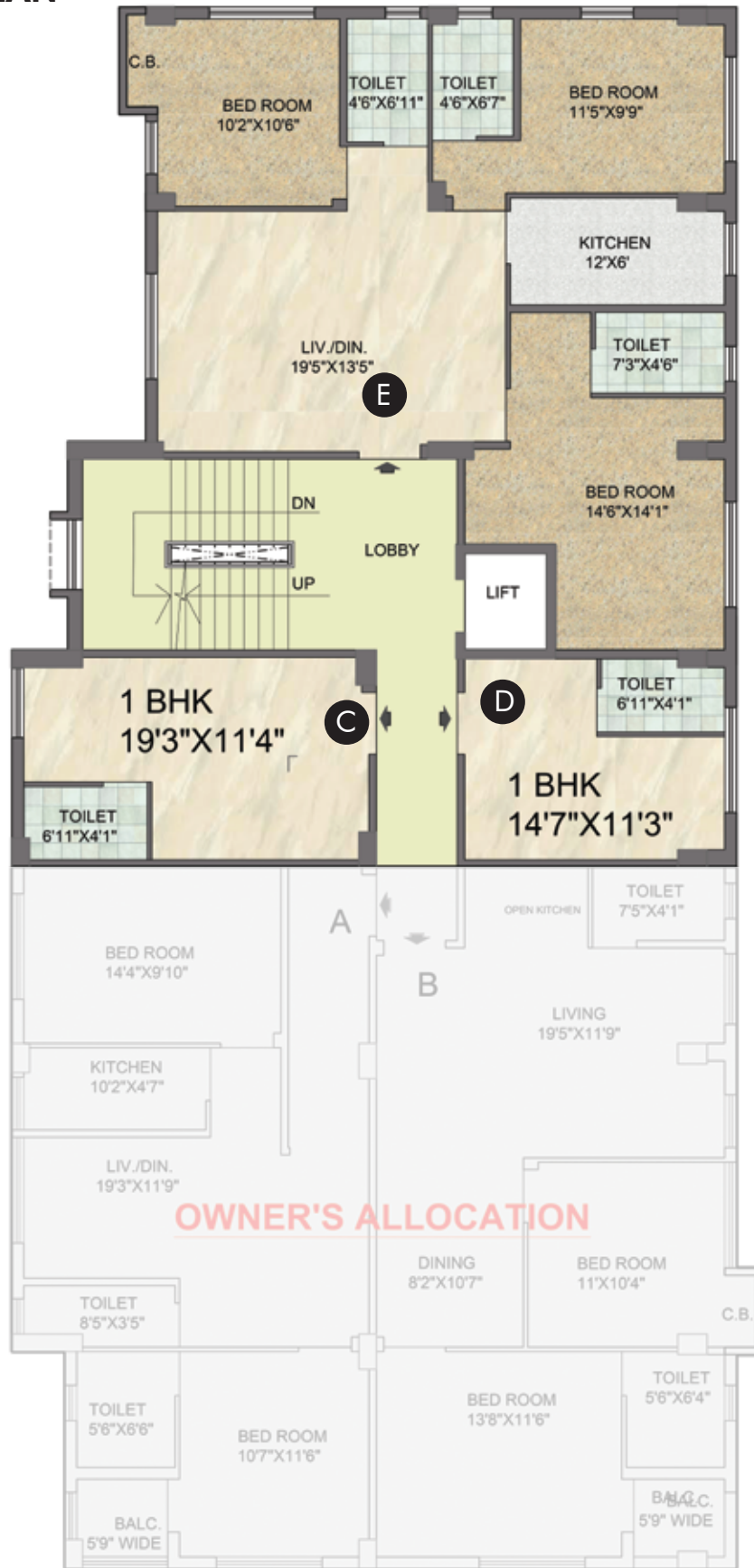


# 1<sup>ST</sup> FLOOR PLAN



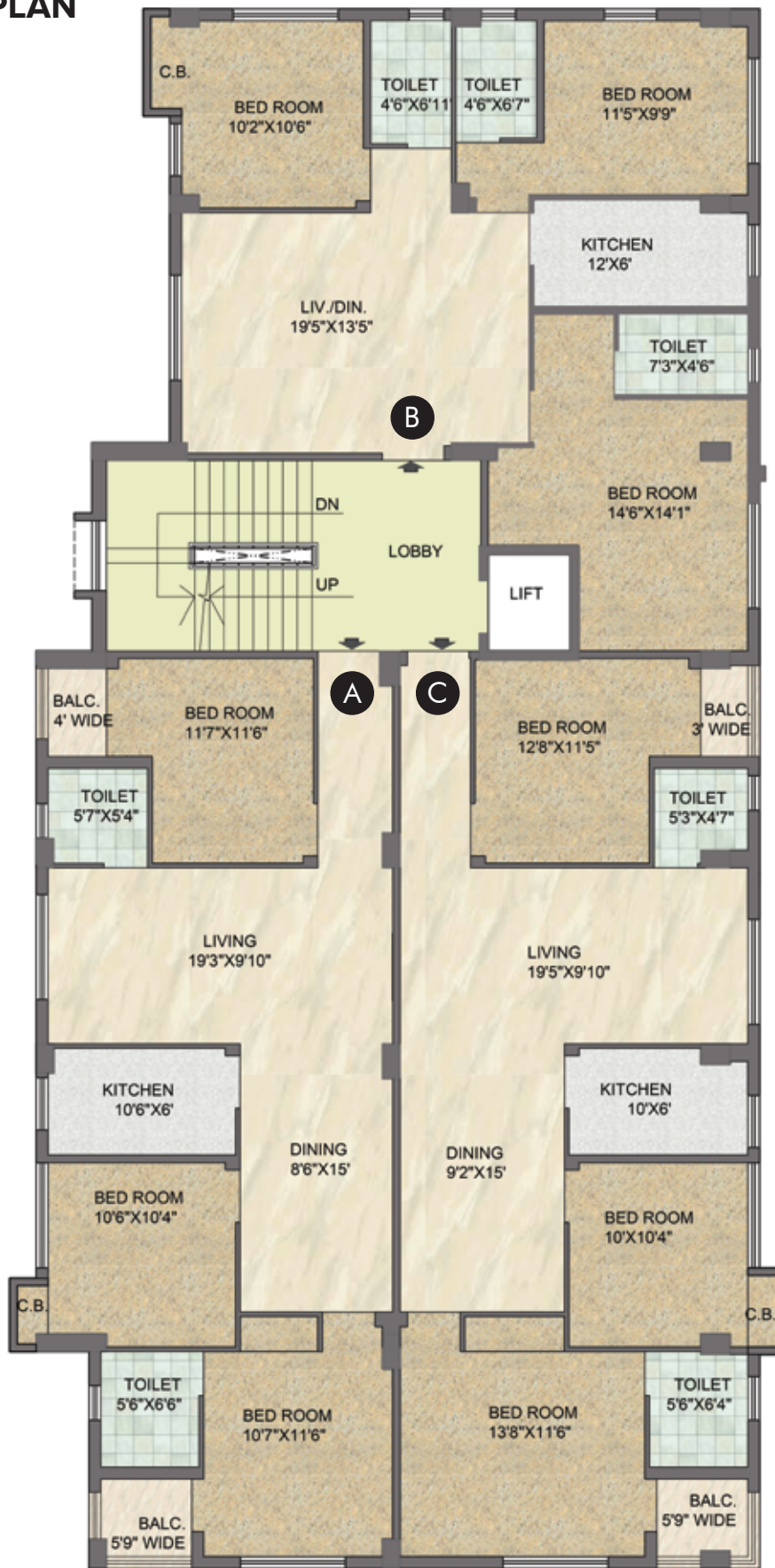
Type	Carpet Area	Built-up Area	Super Built-up Area
Office 1	1930 Sq. Ft.	2038 Sq. Ft.	2717 Sq. Ft.
Office 2	895 Sq. Ft.	975 Sq. Ft.	1300 Sq. Ft.

# 3<sup>RD</sup> FLOOR PLAN



Type	BHK	Carpet Area	Built-up Area	Super Built-up Area
Type-C	1 BHK	217 Sq. Ft.	243 Sq. Ft.	324 Sq. Ft.
Type-D	1 BHK	161 Sq. Ft.	183 Sq. Ft.	244 Sq. Ft.
Type-E	3 BHK	906 Sq. Ft.	984 Sq. Ft.	1312 Sq. Ft.

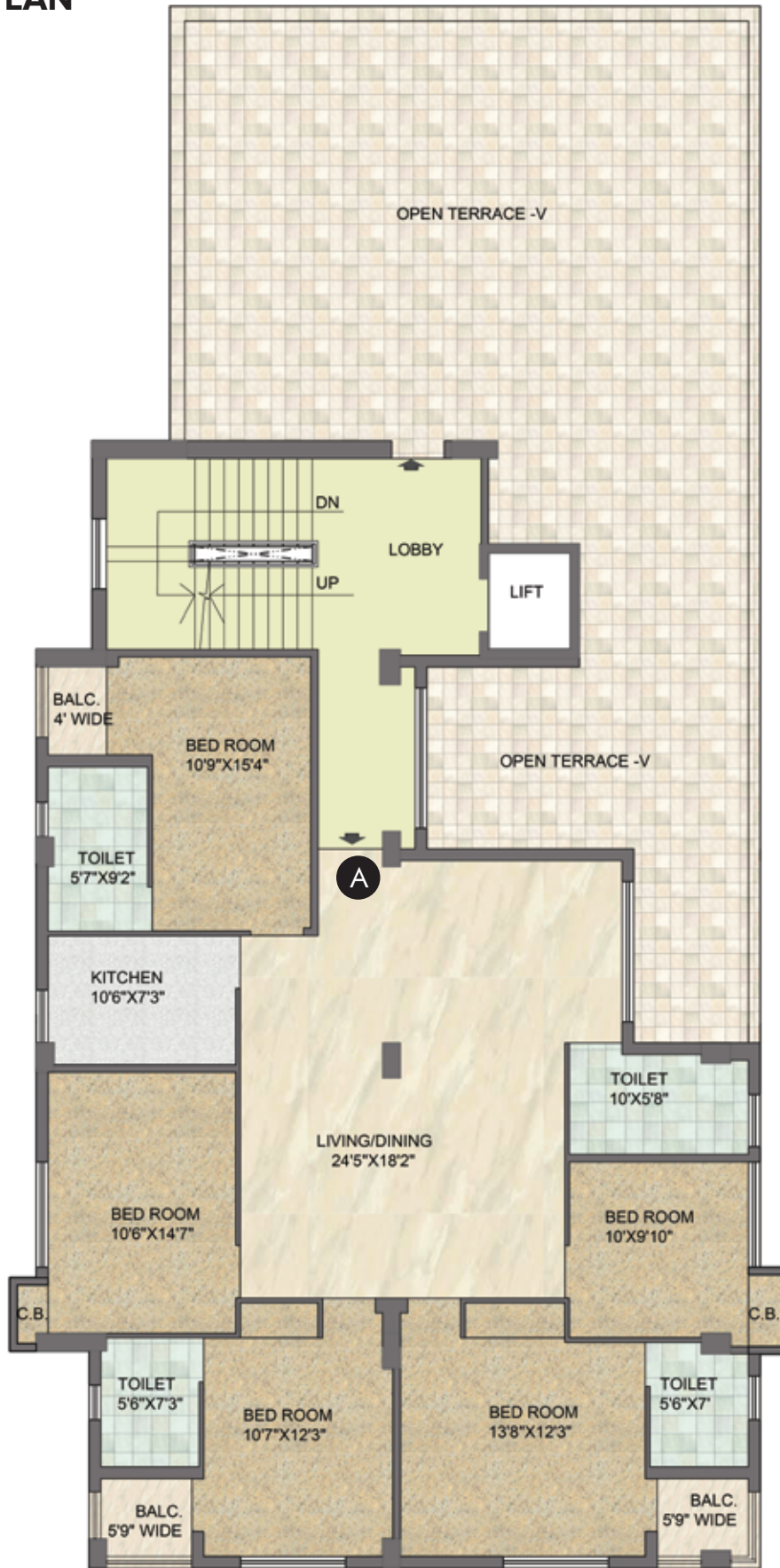
# 4<sup>TH</sup> FLOOR PLAN



Type	BHK	Carpet Area	Built-up Area	Super Built-up Area
Type-A	3 BHK	890 Sq. Ft.	1004 Sq. Ft.	1339 Sq. Ft.
Type-B	3 BHK	905 Sq. Ft.	983 Sq. Ft.	1311 Sq. Ft.
Type-C	3 BHK	938 Sq. Ft.	1047 Sq. Ft.	1396 Sq. Ft.



# 5<sup>TH</sup> FLOOR PLAN



Type	BHK	Carpet Area	Built-up Area	Super Built-up Area	Open Terrace
Type-A	5 BHK	1510 Sq. Ft.	1703 Sq. Ft.	2270 Sq. Ft.	1224 Sq. Ft.

# SPECIFICATIONS

## Living Room / Dining Area

**Flooring :** Vitrified Tiles

**Wall :** Wall Putty (Ready to Paint)

**Balcony :** Aluminium sliding door with Full Glazing

**Windows/Glazing :** Aluminium/UPVC

## Bedrooms

**Flooring :** Vitrified Tiles

**Wall :** Wall Putty (Ready to Paint)

**Doors :** Flush Doors

**Windows/Glazing :** Aluminium/UPVC

**Electrical :** Modular switches

## Kitchen

**Flooring :** Vitrified Tiles

**Wall :** Wall Putty (Ready to Paint)

**Windows/Glazing :** Aluminium/UPVC

**Counter :** Granite counter top with sink

## Toilets

**Flooring :** Anti Skid Tiles

**Wall :** Tiles up to 6' Height

**Windows/Glazing :** Aluminium/UPVC

**Sanitary ware :** Kohler/Roca or equivalent brand

**CP Fittings :** Kohler/Jaguar or equivalent brand

## Doors & Windows

**Main Door :** Sal wood frames with flush door with polycoat lamination

**Internal Doors :** Flush Doors

**Windows/Glazing :** Aluminium/UPVC

**Balcony :** Aluminium sliding door with Full Glazing

## Electrical

**Wiring :** Concealed copper wiring

**Switches :** Modular switches (Schneider/Havells or equivalent make)

## Power Outlets

AC points in living/ dining & all bedrooms

Geyser & Exhaust point in all toilets

Adequate power outlets for kitchen appliances

**Power back-up :** Power back-up at extra cost

## Others

Power back-up for common areas and lift

Aesthetically designed lobby area

Automatic lift

CCTV Surveillance

Intercom

Video door phone

24X7 security

**ZENITH**  
VINAYAK GROUP PROPERTY

Developed by



**Vinayak Group-**

122/1R Satyendranath Majumdar Sarani, Kolkata- 700026

**P-** 033 2464 7383 **F-** 033 2419 8354

**E-** sales@vinayakgroup.org **W-** www.vinayakgroup.org