

*An Affordable Luxury Living
in the Lap of Nature*



S A I T R Y 2

GREENS

GAZIPUR ROAD, ZIRAKPUR





SO RELIABLE & TRUSTY WORTHY



NK Sharma Group has created edifices of magnificence in and around Zirakpur, Punjab by successfully delivering numerous projects. Today, NK Sharma Group with its high commitment to quality living has become a synonym for perfection, innovation, customer satisfaction, transparency. Having developed a track record of creating high end yet affordable projects, the group is diversifying into hospitality and its maiden hotel project is underway.





SO FASCINATING



Come Abode to
an exciting new lifestyle!

Amidst the natural beauty stands a beautiful dream which has been luxuriously crafted in a secure, integrated, beautiful township right in the heart of Zirakpur... that's Savitry Greens-2 for you! Succumb to the poetry of nature surrounded by 16 acres of lush green landscaped grounds. Eleven imposing towers will offer a choice of spacious apartments & plush penthouses. Beyond the residential complex, Savitry Greens-2 lays out schools and shopping centers, medical centers, office blocks, entertainment and leisure zones and much more.





THE AMENITIES



World class
design for a world class living.

Spread over 26 acres, in the strategic location of the Chandigarh-Ambala Highway. A perfect earthquake resistant structure with modern electric architecture to add grandeur. Intelligent design and usage of space ensuring enhanced ventilation and ample natural light.

- Club house with swimming pools
- Party lawns
- Special health zone
- Providing a perfect place to relax and entertain in style
- Round the clock security for your safety
- Power back up
- 24 hours water supply
- Prepaid electricity meter
- **GURUKUL GLOBAL SCHOOL IN OUR PREMISES.**



SAYITRY2
GREENS
GAZIPUR ROAD, ZIRAKPUR



THE GURUKUL
modernity with tradition

The Gurukul Sr. Sec. School in our campus.





THE SPECIFICATIONS



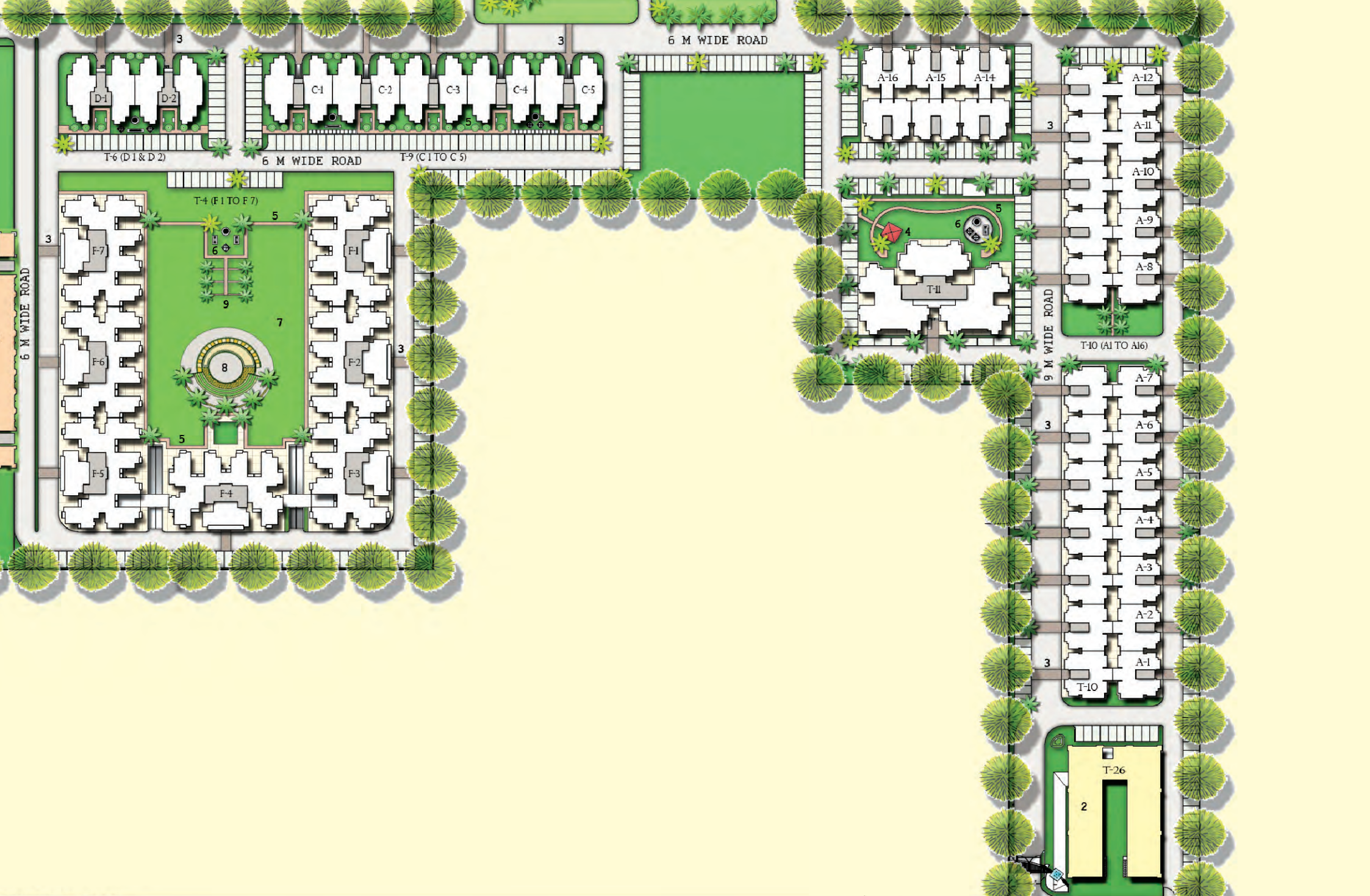
LOCATION	FLOORING	WALL FINISH	DOORS	OTHERS
Bedroom	Vitrified Tiles	Oil Bound Distemper	-----	Laminated wooden Flooring in Master Bedroom*
Living / Dining	Vitrified Tiles	Oil Bound Distemper	-----	-----
Kitchen	Vitrified Tiles	Ceramic Tiles upto 2 ft above counter and oil bound distemper in the remaining area	-----	Marble/Granite Counter with Stainless Steel Sink
Toilets	Anti Skid Ceramic Tiles	Ceramic Tiles upto 7 ft	-----	Granite Counter in Master Toilet*
Balconies	Anti Skid Ceramic Tiles	-----	-----	-----
Servant Room/ Store	Ceramic Tiles	Oil Bound Distemper	-----	-----
Lift Lobby	Marble/Flooring Vitrified Tiles	Oil Bound Distemper	-----	-----
External Finish	-----	Permanent Textured Paint Finish	-----	-----
Main Entry	-----	-----	Hardwood Frame With European Style Moulded Shutter	-----
Internal	-----	Oil Bound Distemper	Hardwood Frame With Shutter/ Moulded / Flush	-----
External	-----	Exterior Emulsion Paint Finish	Aluminium Powder Coated	-----

*In Selected Units





SAYITRY²
GREENS
GAZIPUR ROAD, ZIRAKPUR



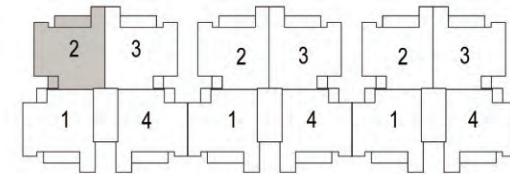
6 M WIDE ROAD WIDENING
 6 M WIDE ROAD
 6 M WIDE ROAD WIDENING

21'-4" WIDE ROAD WIDENING
 24' WIDE ROAD
 21'-4" WIDE ROAD WIDENING



UNIT - 2
 2BED + 2TOI
 SUPER AREA - 800 SQ. FT.

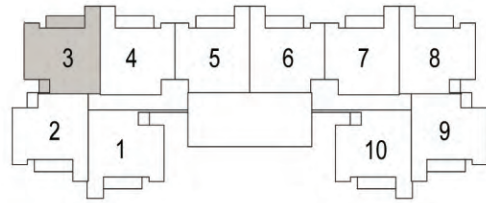
B-3 & B-6 B-2 & B-5 B-1 & B-4



T-1 (B-1 TO B-3 & B-4 TO B-6)

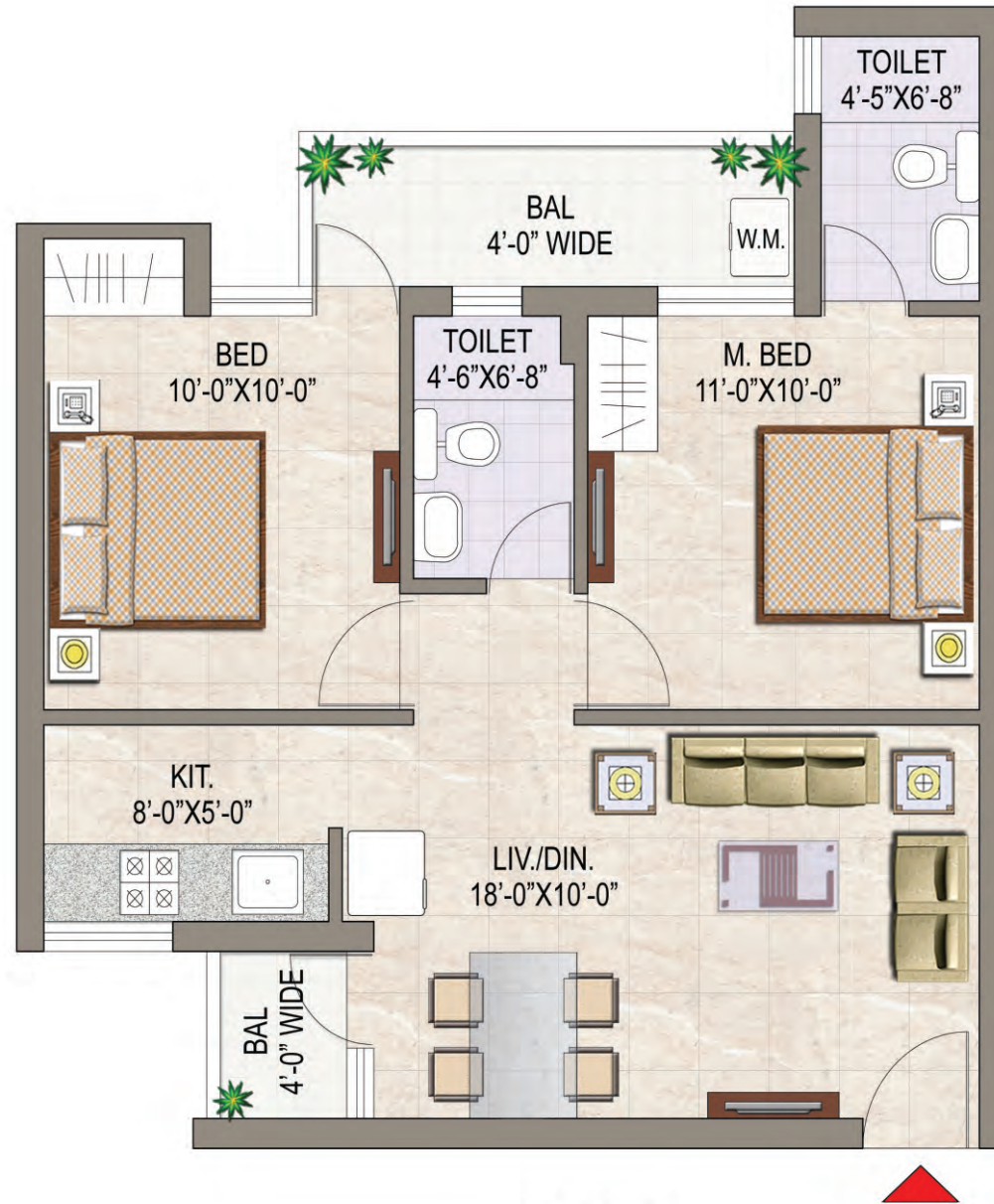
KEY PLAN

- 001 - 301
- 002 - 302
- 003 - 303
- 004 - 304

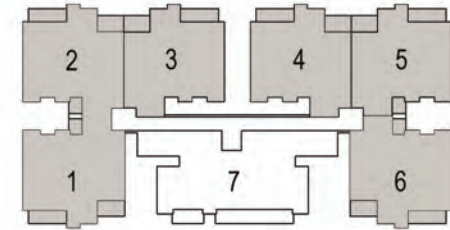


T-2 (E1-E6)
KEY PLAN (G+10)

- 001 - 1001
- 002 - 1002
- 003 - 1003
- 004 - 1004
- 005 - 1005
- 006 - 1006
- 007 - 1007
- 008 - 1008
- 009 - 1009
- 010 - 1010



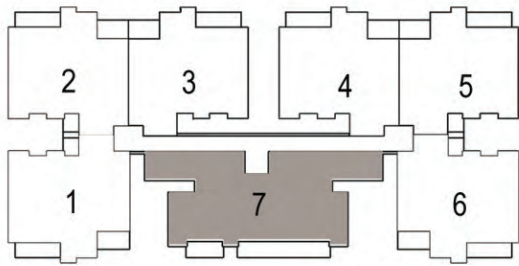
UNIT - 3
2BED + 2TOI
SUPER AREA - 800 SQ. FT.



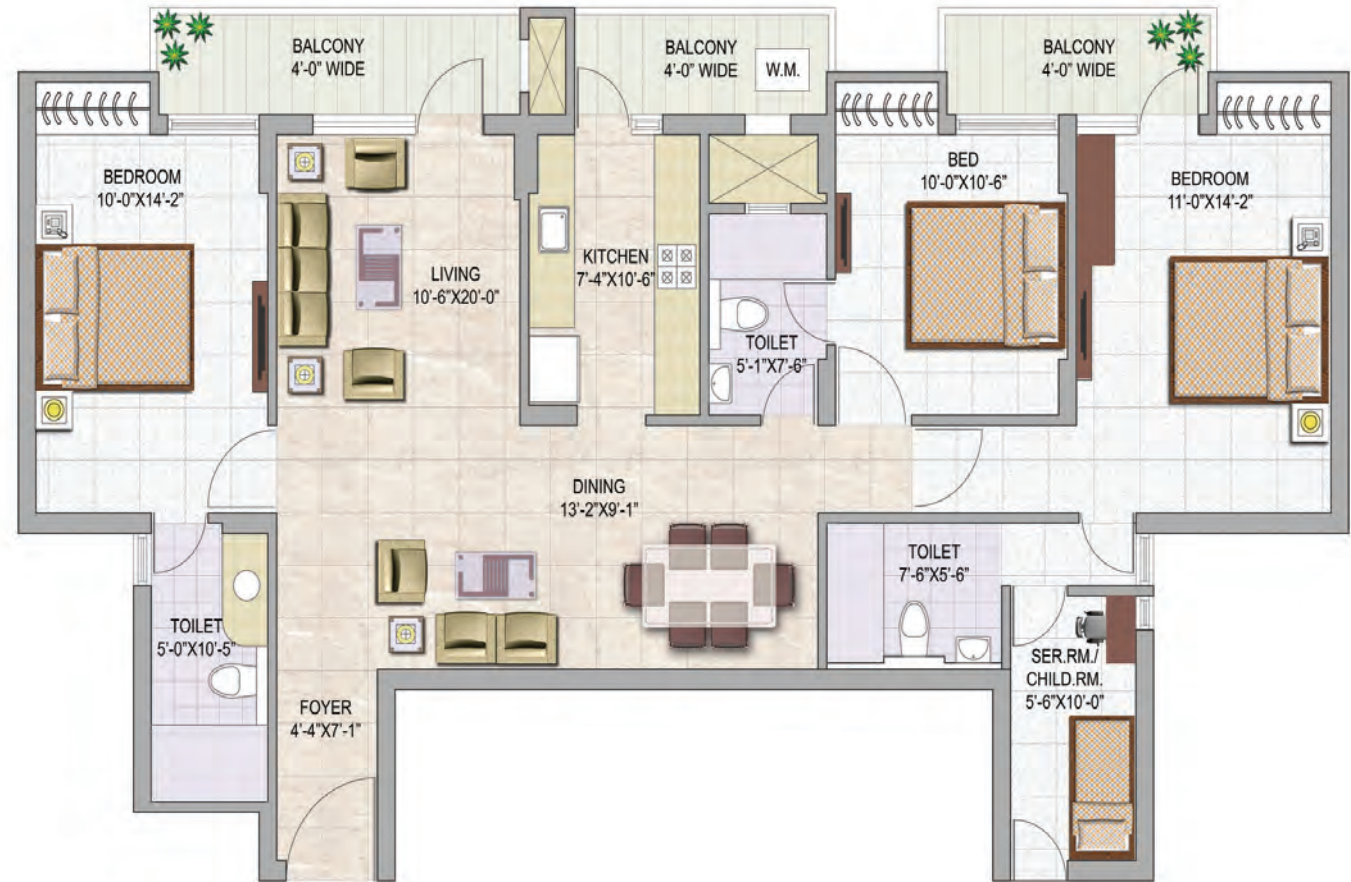
KEY PLAN
T-7 (G+14)

- 0001 - 1401
- 0002 - 1402
- 0203 - 1403
- 0204 - 1404
- 0005 - 1405
- 0006 - 1406

TYPE - 1,2,3,4,5 & 6
 3 BED + 3TOI + DRESS
 SUPER AREA - 1555 SQFT



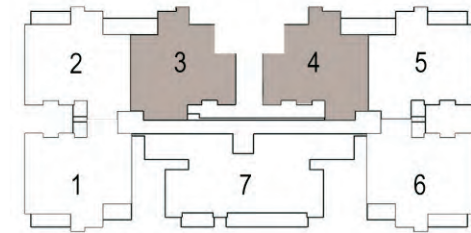
KEY PLAN
T-7 (G+14)
0007 - 1407



TYPE - 7

3BED + 3TOI + SER. RM./CHILD RM + LOUNGE

SUPER AREA - 1840 SQFT



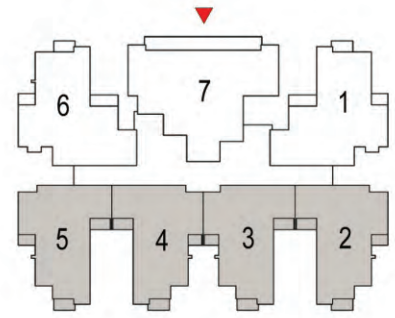
KEY PLAN

T-7 (G+14)

0003 - 0103

0004 - 0104

TYPE - 3A & TYPE - 4A
 2BED + 2 TOI + STORE
 SUPER AREA - 1300 SQFT

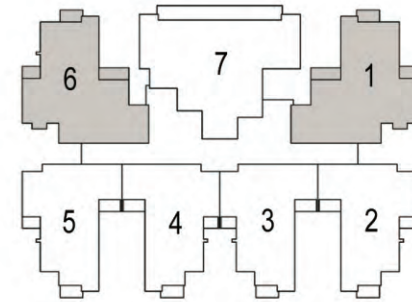


T - 8 (G+14)
KEY PLAN

- 002 - 1402
- 003 - 1403
- 004 - 1404
- 005 - 1405

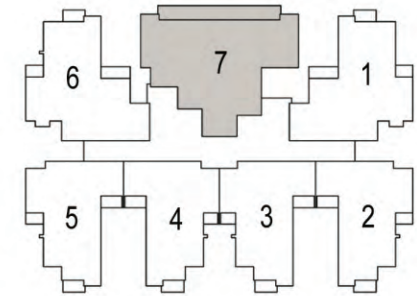


UNIT - 6
 3BED + 2TOI
 SUPER AREA - 1150 SQ FT



T - 8 (G+14)
 KEY PLAN

001 - 1401
 006 - 1406



T - 8 (G+14)
KEY PLAN

107 - 1407

UNIT - 7

3BED + 2TOI + LOBBY
SUPER AREA - 1500 SQ FT

Family is what we make



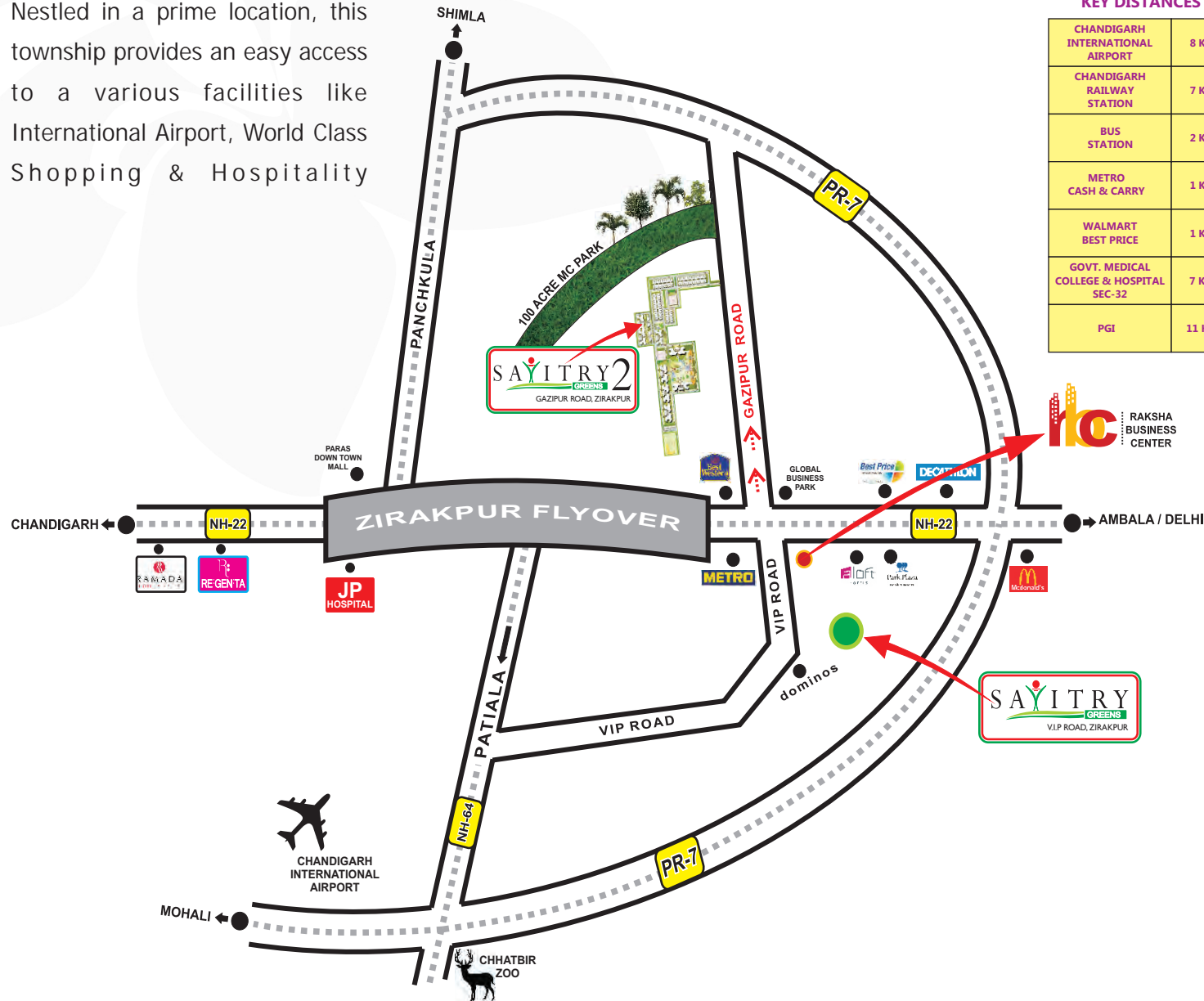
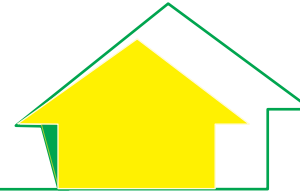
You may come as a customer, but Family is what you become and the group cares for every member like one. To cater best services and amenities to family is what we are committed to. So, we make sure that you only get what you deserve...THE BEST





AN ACCESS TO PARADISE

Nestled in a prime location, this township provides an easy access to a various facilities like International Airport, World Class Shopping & Hospitality



KEY DISTANCES

CHANDIGARH INTERNATIONAL AIRPORT	8 KM
CHANDIGARH RAILWAY STATION	7 KM
BUS STATION	2 KM
METRO CASH & CARRY	1 KM
WALMART BEST PRICE	1 KM
GOVT. MEDICAL COLLEGE & HOSPITAL SEC-32	7 KM
PGI	11 KM





Sunrise Complex, Zirakpur
Project Delivered

With 100% of occupancy and successful deliverance, this Group Housing Complex, located on VIP Road, Zirakpur, are synonymous with excellence. It blends comforts of home and a premium lifestyle.



Savitory Enclave, Zirakpur
Project Delivered

With almost 100% of occupancy and successful deliverance, these luxurious (PUDA Approved) independent Row Houses nestled in lush green locale are located on VIP Road, Zirakpur, designed and built to provide maximum privacy and comfort.



Defence Enclave, Zirakpur
Project Delivered

With vast stretches of well-planned road lush green landscapes and fast changing horizons, this enclave is centrally located on Chanigarh-Patiala Highway, Zirakpur, flaunting the mesmerizing lifestyle and majestic environment with 100% occupancy.



Savitory Towers, Zirakpur
Project Delivered

Housed on a sprawling campus of approximately 5 acres, this (PUDA APPROVED) Group Housing Complex, located on VIP Road, Zirakpur, manifests a high level of luxury, capability, convenience and connectivity.



Raksha Business Center
On-going Project

OUR PROJECTS



Savitory Towers-II, Zirakpur
Project Delivered

With successful deliverance, this Group Housing Complex, located on VIP Road, Zirakpur, presents a portrait of enticing lifestyle that is engrossing in its true sense.



Savitory Greens
On Going Project

This luxurious Group Housing Complex located on VIP Road, Zirakpur, gives you life amidst rich greens. Every corner of the 22 acres land has been aesthetically done. Here's where life is a celebration every day.



Savitory Towers, Mohali
Project Delivered

An on-going Group Housing Complex (Approved under Mega Project by Punjab Govt.) Located in Sector 91, Mohali presents a lifestyle of flamboyance. Spreading over 3 acres, the apartments offer a choice of classic lifestyle with boundless luxury



Savitory Enclave Independent Duplex, Zrk
Project Delivered

With 99% of occupancy and successful deliverance this magnificent (PUDA Approved) Group Housing Complex is located on VIP Road, Zirakpur, Distt SAS Ngr, Mohali, Punjab where very inch of the apartments is planned to enhance the joy of living.



Savitory Apartments, Zirakpur
Project Delivered

Project successfully delivered to the satisfaction of our customers, these 2BHK Apartments with attached balcony offer the finest detail along with every necessity.



N.K. Sharma Enterprises Pvt. Ltd.
A unit of
N.K. SHARMA GROUP OF COMPANIES
Charanji Enclave (Lohgarh)
Chandigarh-Ambala Highway,
Zirakpur, Tehsil-Derabassi.
Distt. Mohali-140603
Tel: 01762-287510, 522824
www.nksharmagroup.com
email: info@nksharmagroup.com
