



SK *Daisy*
A project with Oxygen Plantation

You need to head out to your HIDDEN PARADISE.



Look at the life afresh

Live life with peace of mind cocooned with a world of luxury. Reconnect with the nature that you were cut off from. Grey landscapes are replaced by green landscapes and noise by the delightful calm. Smile at the cool wind in your hair and you smile at the absence of worldly cares. Appearance of birds you have never seen and a treat to your eyes with flowers and butterflies.

Every flat is an independent home ...

SK *Daisy*





Latest life style amenities:

- No Common Walls
- All the flats are planned as per Vasthu.
- Land Scape with Oxygen Plantation
- Walking Track
- Community Hall
- Badminton court
- Swimming pool with toddler pool
- Children's play area
- Gymnasium
- Basket Ball Post
- Cricket Net
- Steam room
- 24 hour Security
- Intercom Facility



We put our 100% in every detail of planning. In every perfection in execution. In every elegant structure, soaring into the sky. In the omnipresent soothing greens. In our determination to step beyond the ordinary.

At **SK DAISY** we invite you to step out into a home that does not limit you to its four walls, but frees you to explore the impossible. We invite you to experience the comfort of world class amenities that make life not just convenient, but exciting...luxurious... opulent!

This is no flight of fancy. **SK DAISY** is a residential complex of 2 & 3 BHK apartments, located in the quiet environs of Electronic City Phase-1, Bangalore. Away from the maddening traffic and pollution of the city, this is the perfect destination for the achiever, unsurprisingly successful in his field of work, yet looking for inner peace.



Snake Plant



Areca Palm



Money Plant

Oxygen Plantation (recommended by NASA)

Plants generating oxygen is nothing new, we all know that trees are the lungs of our planet. And it is well known that plants release carbon dioxide at night, potentially making your environment hazardous if it is confined. However, some plants do the opposite, they consume carbon dioxide and release oxygen.

Top three oxygen producing plants:

- Areca Palm**
- Snake Plant**
- Money Plant**

Bringing **Oxygen** producing plants into your home is a way to mimic the healthy lifestyle factors of longevity in humans from the longest lived cultures.

Green oxygen producing plants are abundant in nature, especially in forests, jungles and coastal regions by the ocean (seaweeds, algae and marine phytoplankton make up the overwhelming majority of the world's oxygen producing plants). If you've ever spent time in or near these settings, you'll know how refreshing and revitalizing they are! **Oxygen** and the air it is contained in, could be considered the most crucial nutrient to the human body because life can only last mere minutes without it.

Every cell in the body uses oxygen for fuel (as well as glucose). Brain function quickly drops when it is not supplied with adequate oxygen. If it falls too low too quickly, a stroke can occur. Cancers and many pathogenic diseases are destroyed by oxygen, which is why hyperbaric oxygen chambers are used as such powerful life saving tools. These chambers can also reverse all the side effects of a stroke if a person who has just suffered from one is placed into one within an hour or so.

The ratio of oxygen to other molecules in the Earth's atmosphere has been dropping over several decades. The majority of this problem is due to air pollution increasing and less to the fact that the forests and jungles of the world are being reduced by clear cutting (which should still be stopped). Areas of higher pollution, such as cities, have a lower percentage of oxygen in the air. I hope that these oxygen facts help illustrate the importance of bringing both oxygen producing plants as well as air cleaning plants into your home for life-span development.

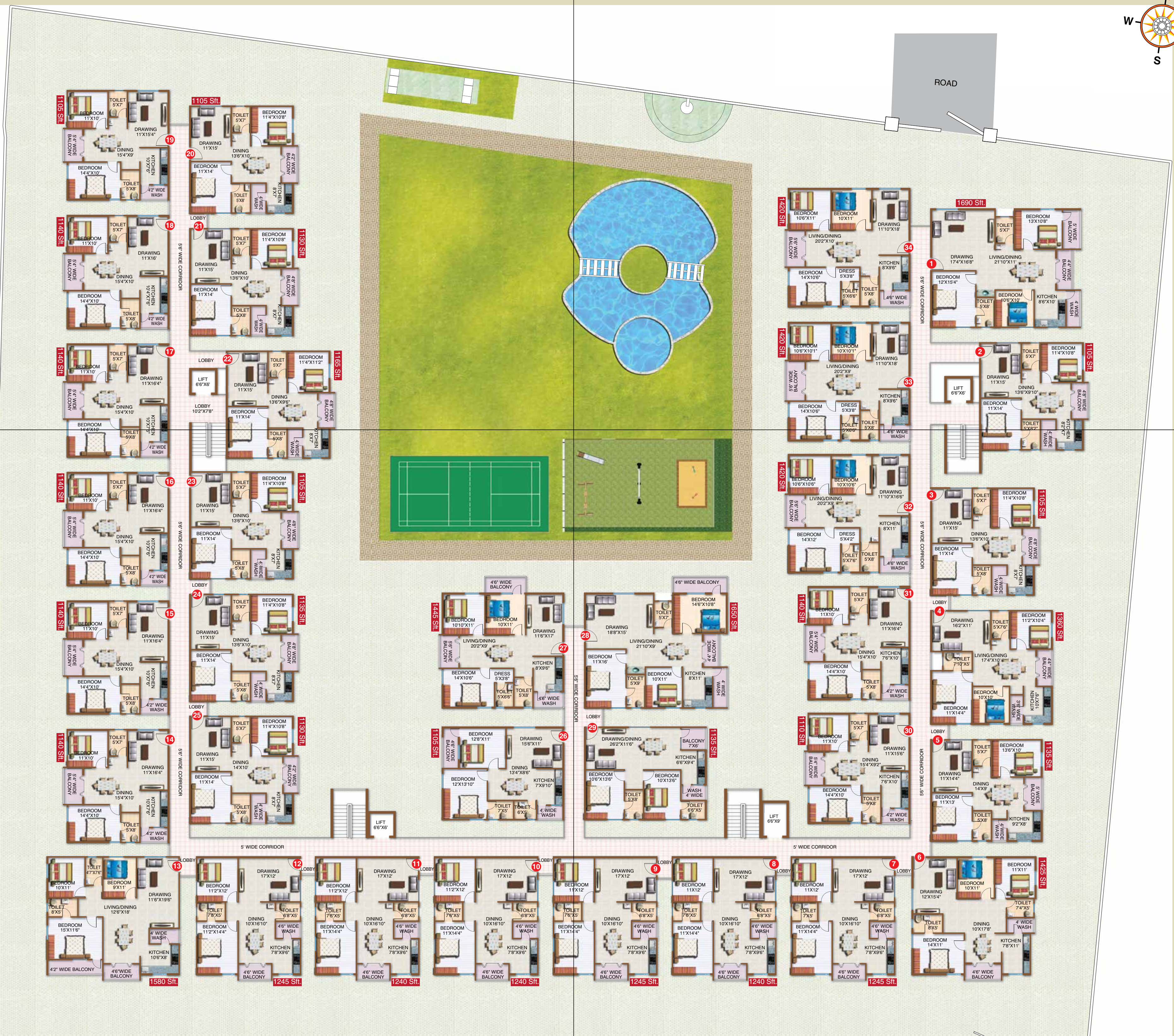
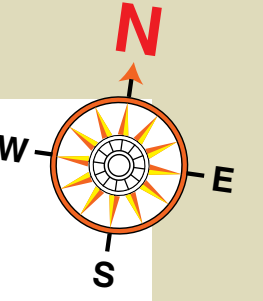
Dr. B.C. Wolverton, a former **NASA** research scientist, helped the agency look into how air purifying plants could be used onboard space missions to benefit the artificial environments onboard their spacecraft.

This **NASA Clean Air** Study found that oxygen producing plants can be used to both produce oxygen as well as remove common harmful chemicals from the air and break them down into harmless organic byproducts into the soil, which the plants then use as food! These chemicals that are harmful to human health are off-gassed from common household items and products. Some of these items and the chemicals they release are found in synthetic carpets (releases formaldehyde), petroleum products (release benzene), toys, chemical cleaners, paint, furniture with synthetic components and everything else that is synthetic!

Typical Floor Plan



3 BHK FLATS:
01, 04, 06, 13, 27, 28, 32, 33 & 34



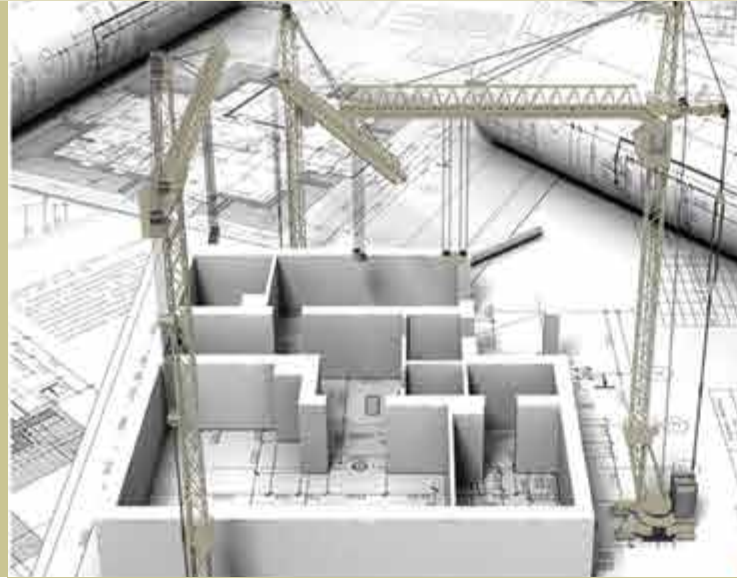
Specifications

Structure:

- RCC framed structure of M20 Grade with plinth beams for extra safety by using steel and cement of reputed make.

Super Structure:

- Good quality concrete block walls with external 6" and internal 4".
- Plastering in 2-coats with sponge and smooth finishing.



Flooring:

APARTMENT:

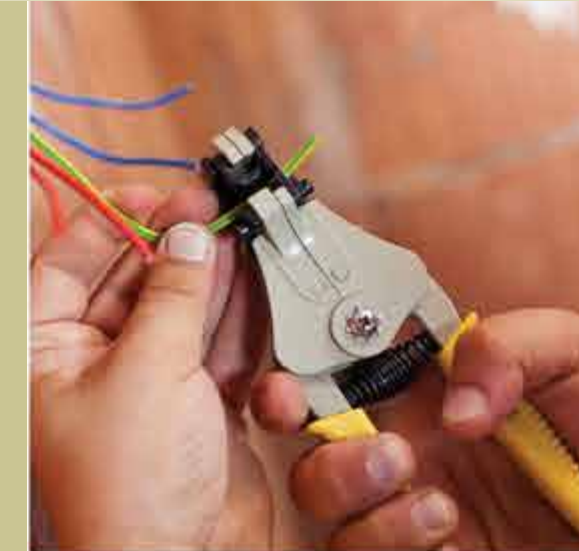
- Drawing, Living, Kitchen, Bedrooms and dining with vitrified tiles (600mm*600mm) with skirting.
- Balconies, toilets and utility – Anti-skid ceramic tiles.

COMMON AREA:

- Corridor and staircase Sadarahalli granite or equivalent flooring.
- Concrete flooring for cellars.

Electrical:

- Concealed P.V.C. pipes with standard / fire resistant copper wiring with adequate points.
- Electrical modular switches with metal box of reputed make.
- Adequate fan, light and 5 Amps points. Geyser & exhaust points in all toilets.
- T.V./ Phone point in Hall/drawing and Master bedroom.
- A.C Points in Hall and Master bedroom.
- Mixer / grinder / Microwave oven points in kitchen.



Toilets:

- Door height - Glazed ceramic tiles for wall cladding.
- Chromium plated fittings - Jaguar/ Parryware.
- EWC with flush tank in all toilets.
- Washbasin would be provided in M. bedroom toilet and dining.
- Porcelain fittings – Cera/Hindware/ Parryware.

Doors & Shutters:

- Main doorframe will be Teakwood. Internal door frames will be Salwood/equivalent.
- Polished paneled skin shutter for main entrance door with necessary reputed make hardware fittings.
- Internal and toilet door shutters will be flush doors duly painted and fitted with necessary reputed make hardware fittings.
- French doors in balconies would be alluminum sliding type with glass.

Painting:

- Birla / Branded Putty for internal walls in all rooms (Excluding common area, balconies and toilets).
- Internal walls of flats will be painted with emulsion paint.
- External walls will be texture / sponge finish with external paint.
- Enamel paint for M.S. railings and grills.



Communication System:

- Telephone & Internet points in living and M.bedroom.

Lift:

- 6 passenger branded lifts.
- One lift for shifting the goods.

Generator:

- Mahindra or equivalent for common area, lift.
- 0.75 KVA for 2 BHK & 1KVA for 3BHK for power for each flat.

Plumbing & Sanitary:

- Concealed best quality PVC/CPVC pipes.
- All bathrooms consists of best quality polished Chrome (CP) and sanitaryware fixtures.

Security:

- Intercom connectivity from all the flats to central security.
- Round the clock C.C camera at the entrance of complex.

Kitchen:

- Granite Kitchen platform with Stainless Steel Sink (size 2'X2'X8")
- 2 Feet height glazed tiles dado above the platform.



Solar Water Heater:

Solar system will be provided top floor only.

Rain Water Harvesting:

The rain water from the terrace & open areas will be collected through rain water pipes, which will be discharged into the rain water harvesting pits to recharge the under ground water.



Flat No:29
2 BHK
North Facing Flat



Flat No:1
3 BHK
West Facing Flat



Flat No:9
2 BHK
East Facing Flat



Flat No:27
3 BHK
East Facing Flat

The Location:

15 Minutes from Silk Board, a signal free through Elevated Corridor. Walking distance to all major companies.

IT Companies

Wipro, Infosys
HP, CGI
BHEL, SIEMENS
Bosch, HCL

Nearby Institutions

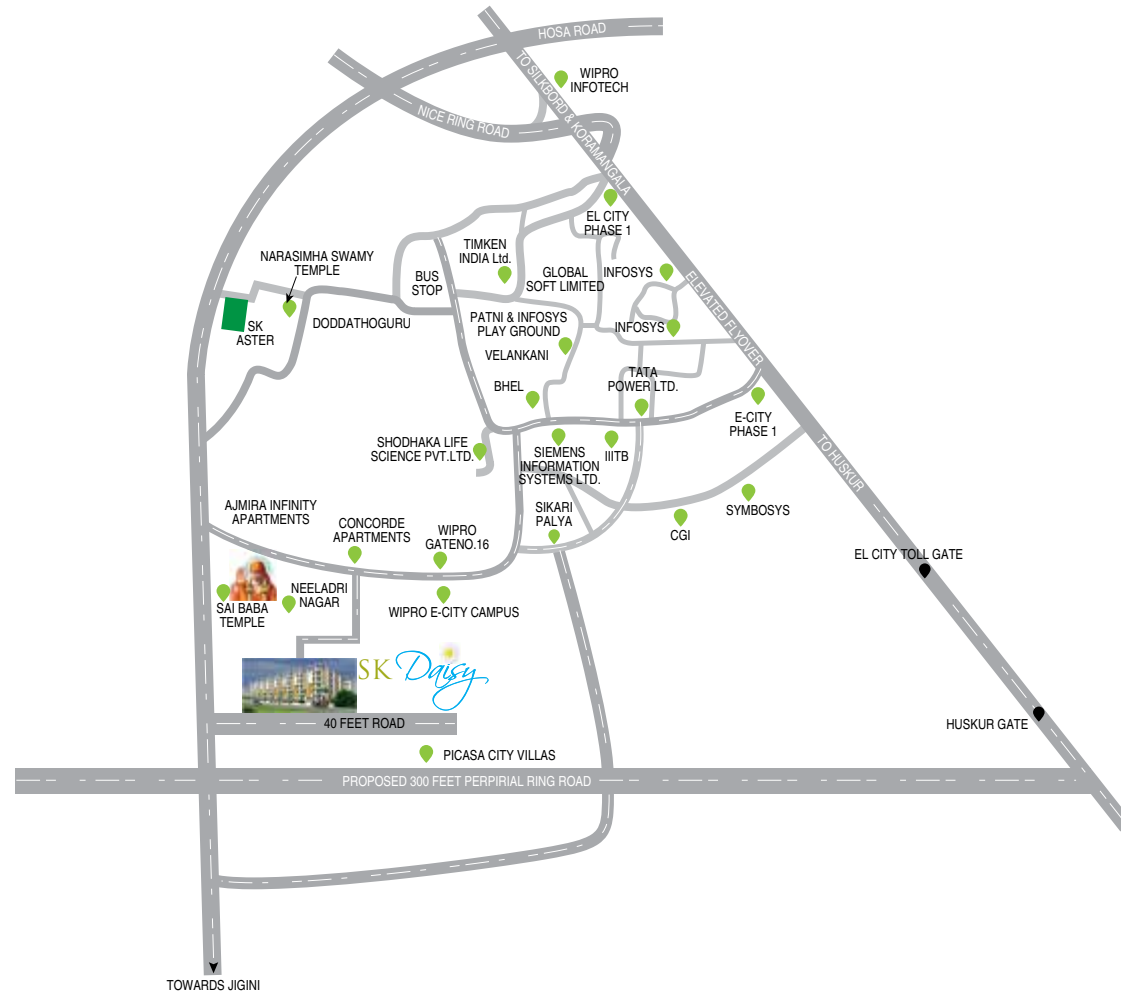
PES
IIIT
IIFM
IIHM

Nearby Schools

Vibgyor
Candor
DPS
St.Xevier
Christ Academy
Ebnezer International school

Near by Hospitals

Narayana Hridayalaya
Fortis, Appolo
St. Johns
Vasan eye care
Ramakrishna Hospital



SK Infra
82/1, Behind Neeladrinagar
Electronic City Phase-1
Bangalore-560100
www.skprojects.co.in



Sns ASSOCIATES

ARCHITECTS & ENGINEERS

Horamovu, Bangalore - 5600043
Vidyanagar, Hyderabad - 500 044
Ph: 77950 16269