



Marketing & Project Office :
2275, Tumkur Road, Adj. Vivanta by Taj, Yeshwanthpur, Bangalore-560 022.
E-mail : marketing@rnsil.com / bekal@rnsil.com

Corporate Office :
Naveen Complex, 7th Floor, 14, M.G. Road, Bangalore-560 001.
Tel.: +91 80 25589849 / 42897000 Fax : +91 80 25584017

For Booking, Contact :
080 - 65655222, 23, 24, 25, 26, & 27 / 2337 5342 Mob.: +91 94498 06154

www.rnsil.com

Disclaimer : The layouts, amenities, specifications, features show and / or mentioned and the flats / buildings image renders used are purely indicative.
The developer / architect reserves the right to change the layout plans, building plans, amenities, specifications, features as shown and /or mentioned herein without prior notice.

RNS
SHRINIKETHAN
3 BHK & 4 BHK LUXURY APARTMENTS @ **YESHWANTHPUR**

A BLEND OF
luxury &
connectivity



Welcome to a picture perfect living



Living amidst comforts that come in fine-detailing in design, and with luxury amenities to match..."

Come home to...



RNS
SHRINIKETHAN

3 BHK & 4 BHK LUXURY APARTMENTS @ YESHWANTHPUR





ARTISTIC IMPRESSION

*R*NS Shrinikethan is a project
envisaged to you by
R.N.Shetty Group of Companies

One of India's best established and reputed name in high-end infrastructure, with a track record spanning over five decades. **R.N. Shetty Group of Companies** has designed and constructed some of India's most enduring landmarks - such as dams, power projects, bridges, highways, hotels, commercial spaces, residential apartments and several other prestigious infrastructure projects.

R.N.Shetty Group of Companies having established a household name in India, now brings this expertise to **RNS Shrinikethan**, a unique project consisting of some of the most exclusive homes in the city - befitting those discerning few who prefer to have an international lifestyle.



Experience life,
at the height of it's comfort...

RNS Shrinikethan invites you to live life on your own terms. Our spacious three and four bedroom apartments are designed to provide the quality and comfort for a premier lifestyle.

RNS Shrinikethan offers you great shopping, entertainment, educational, medical & cultural options all within close proximity. Our flats feature privacy and comfort designs of premium caliber to suit premium segment and guaranteed to make you love **RNS Shrinikethan**. Your new home will have the perfect combination of a quiet community and be just minutes from experiencing life in downtown Bangalore.

The one over-riding feature in its architecture you'll find is a seamless flow of space with every life activity in mind. This intelligent space utilization is yet another architectural mainstay with provisions for family get-togethers, with world-class amenities.



RNS Shrinikethan is adjacent to Vivanta by Taj on NH 4, in Yeshwanthpur, one of Bengaluru's fastest growing and best connected areas.

RNS Shrinikethan offers excellent inter and intra-city connectivity with the metro station just outside the premises.

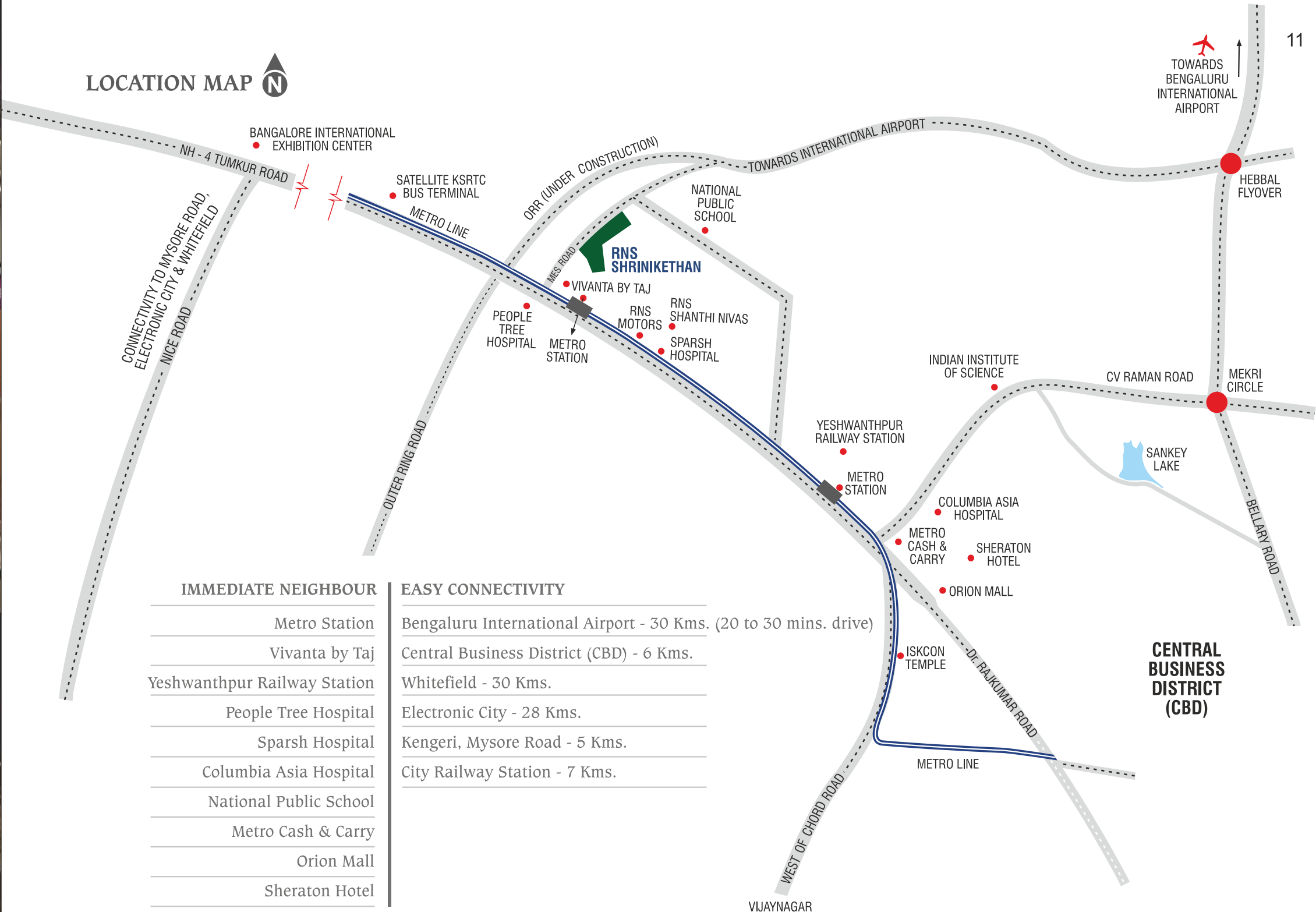
Bengaluru International Airport & Software Parks can be reached via Outer Ring Road within a time span of 20 to 30 minutes from **RNS Shrinikethan**. Further it is well connected to Nice Road for reaching Mysore Road, Electronic City, Whitefield etc. Most of the locations and landmarks of Bengaluru could be reached within 5 minutes to a maximum of 45 minutes.

We look forward to welcoming you to your new home !

First see it, feel it and then decide.



LOCATION MAP



ALL THE MAJOR PLACES IN THE CITY REACHABLE WITHIN 5 to 45 Mins.



RNS SHRINIKETHAN

3 BHK & 4 BHK CONDOMINIUMS @ YESHWANTHPUR

KEY PLAN



- ① **Gulabi**
Tower - A
2B+G+17
- ② **Kamala**
Tower - B
2B+G+17
- ③ **Kanakambara**
Tower - C - 2B+G+17
- ④ **Mallige**
Tower - D - 2B+G+17
- ⑤ **Parijatha**
Tower - E - 2B+G+17
- ⑥ **Sevanthige**
Tower - F - 2B+G+17
- ⑦ **Sampige**
Tower - G - 2B+G+17

*L*ook no further
Your destiny lies with
exquistely designed 7 Towers

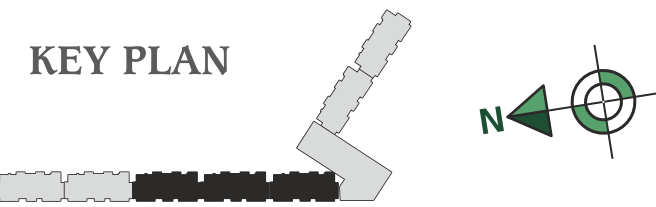
RNS Shrinikethan an architectural landmark consisting of 7 exquisitely designed towers, - **Gulabi, Kamala, Kanakambara, Mallige, Parijatha, Sevanthige** and **Sampige** consisting of 3 BHK, 3 BHK + Study and 4 BHK luxury condominiums of area 264.0 sq.mt. (2843 sq.ft.) to 333.5 sq.mt. (3590 sq.ft.) Designed to international standards using the finest of materials, **RNS Shrinikethan** is everything you would expect in a home - classy, airy and well connected to your world around...

LEGEND
BLOCK NAME : KANAKAMBARA, MALLIGE, PARIJATHA
TYPE : 3 BHK (GROUND FLOOR 1st FLOOR)
3 BHK FLOOR PLAN 2D VIEW



UNIT - 1 SBA 280.12 Sq.mt. (3015 Sq. ft.)

UNIT - 2 SBA - 280.39 sq.mt. (3018 sq.ft.)



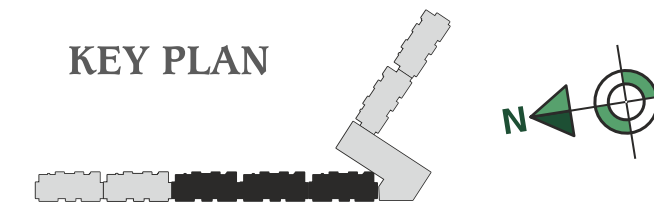
KEY PLAN

LEGEND
BLOCK NAME : KANAKAMBARA, MALLIGE, PARIJATHA
TYPE : 3 BHK (2nd FLOOR - 5th FLOOR)



UNIT - 1 SBA - 306.85 sq.mt. (3303 sq.ft.)

UNIT - 2 SBA - 295.68 sq.mt. (3183 sq.ft.)



KEY PLAN

LEGEND

BLOCK NAME : SAMPIGE, SEVANTHIGE

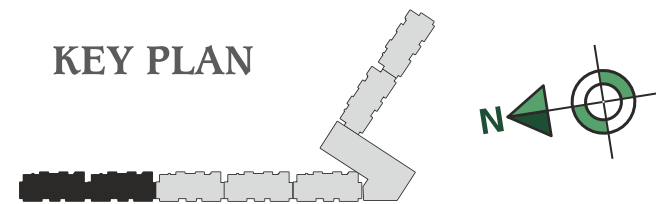
TYPE : 3 BHK + STUDY (GROUND FLOOR, 1st FLOOR)



UNIT - 1 SBA - 279.95 sq.mt. (3013 sq.ft.)

UNIT - 2 SBA - 281.05 sq.mt. (3025 sq.ft.)

KEY PLAN



LEGEND

BLOCK NAME :

SAMPIGE, SEVANTHIGE (2nd FLOOR TO 17th FLOOR)

BLOCK NAME : KANAKAMBARA, MALLIGE, PARIJATHA (6th FLOOR - 17th FLOOR)

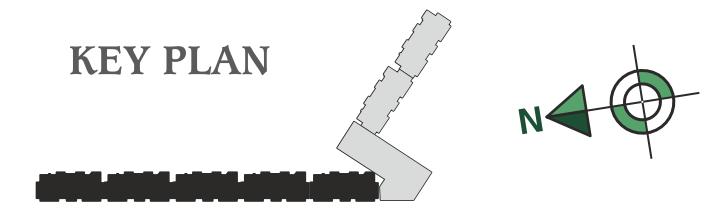
TYPE : 3 BHK + STUDY (TYPICAL)



UNIT - 1 SBA - 307.08 sq.mt. (3305 sq.ft.)

UNIT - 2 SBA - 295.71 sq.mt. (3183 sq.ft.)

KEY PLAN

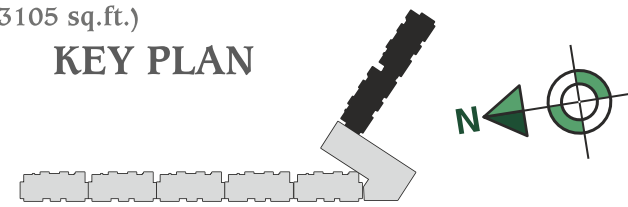


LEGEND
BLOCK NAME : GULABI, KAMALA
TYPE : 4 BHK (GROUND FLOOR, FIRST FLOOR)



UNIT - 1 SBA - 288.00 sq.mt. (3105 sq.ft.)

KEY PLAN



UNIT - 2 SBA - 288.89 sq.mt. (3109 sq.ft.)

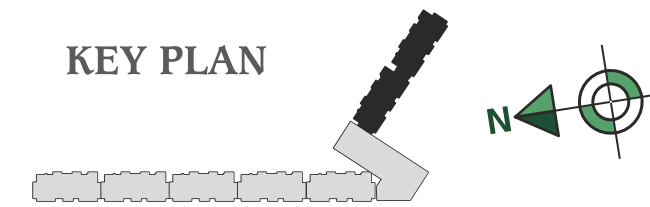
LEGEND
BLOCK NAME : GULABI, KAMALA
TYPE : 4 BHK (2nd FLOOR - 17th FLOOR)



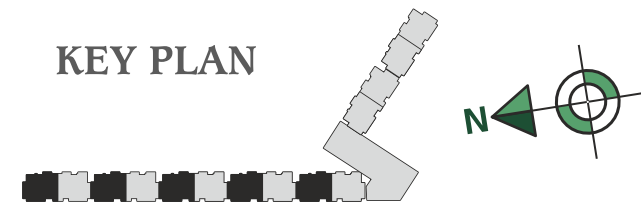
UNIT - 1 SBA - 333.57 sq.mt. (3590 sq.ft.)

UNIT - 2 SBA - 320.58 sq.mt. (3450 sq.ft.)

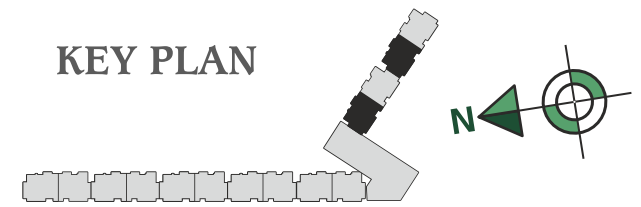
KEY PLAN



LEGEND
 BLOCK NAME : SAMPIGE, SEVANTHIGE (GROUND FLOOR - 17th FLOOR)
 BLOCK NAME : KANAKAMBARA, MALLIGE, PARIJATHA
 (6th FLOOR - 17th FLOOR)
 TYPE : 3 BHK + STUDY - (UNIT - 1)



LEGEND
 BLOCK NAME : GULABI, KAMALA
 TYPE : 4 BHK - (UNIT - 1)





*R*elax & rejuvenate....

AMENITIES

- 3,200 sq.mt. (34,433 sq.ft.)club house with indoor Badminton court, Billiards room, Squash court, Table Tennis & Card Room.
- 2 Exclusive Lifts for Club House - one capsule lift and one service lift
- Banquet Hall
- Exclusive gymnasium for ladies and gents with health club & spa
- Yoga room
- Creche
- In house Restaurant with well equipped Kitchen
- Rooftop Party Hall
- Tennis Court
- Jogging Track
- Swimming Pool
- Children's Play area
- Waterfalls

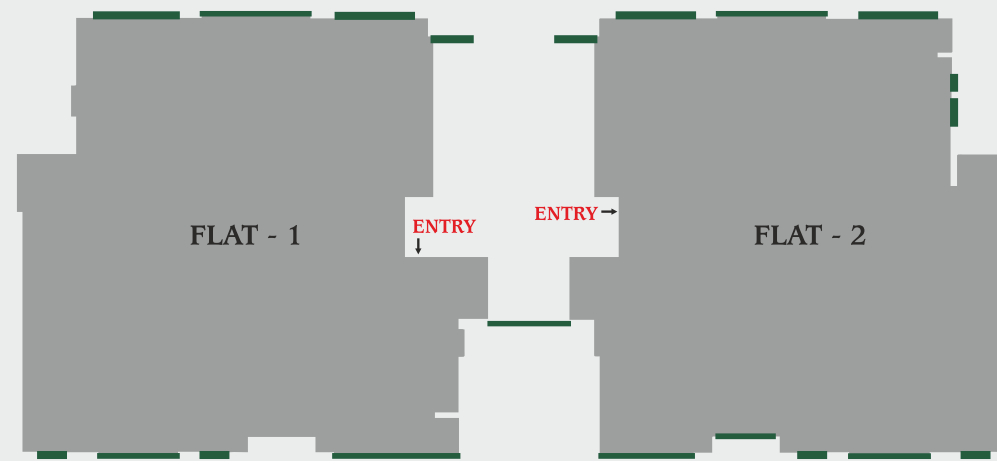








Unique Highlights



32

Complete Privacy - No Opposite Facing Windows
Only two apartments per floor



Fully air-conditioned apartments



33

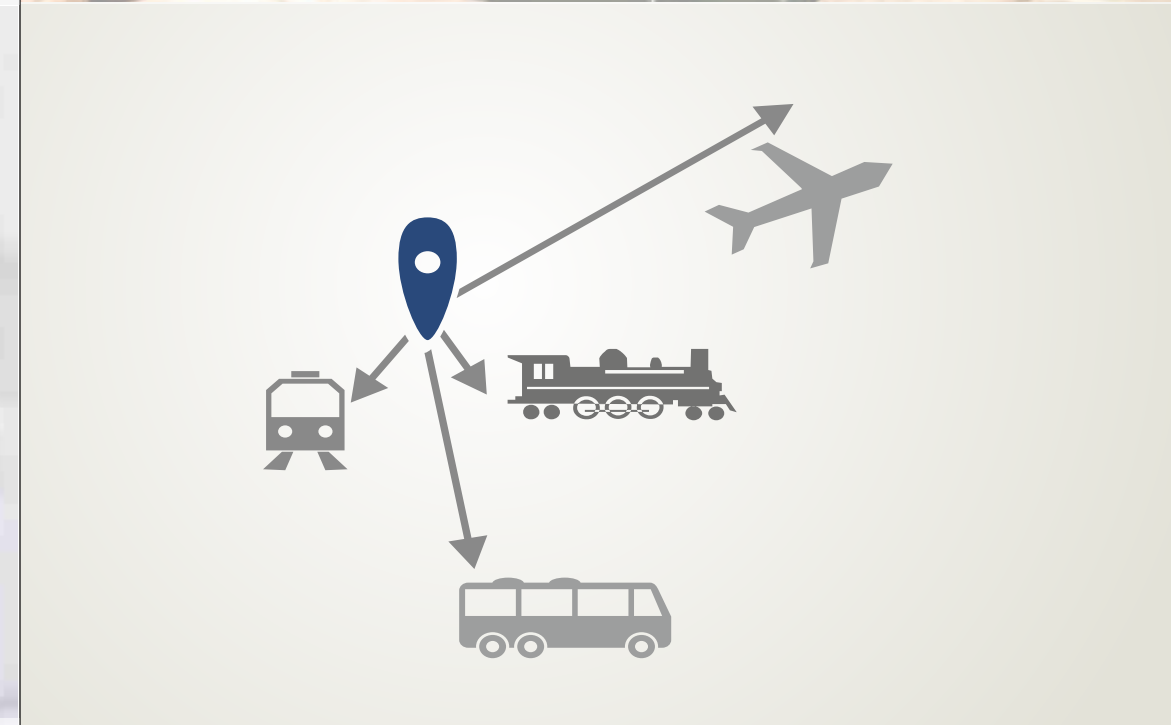
Smart Home features



Extensive landscaping -



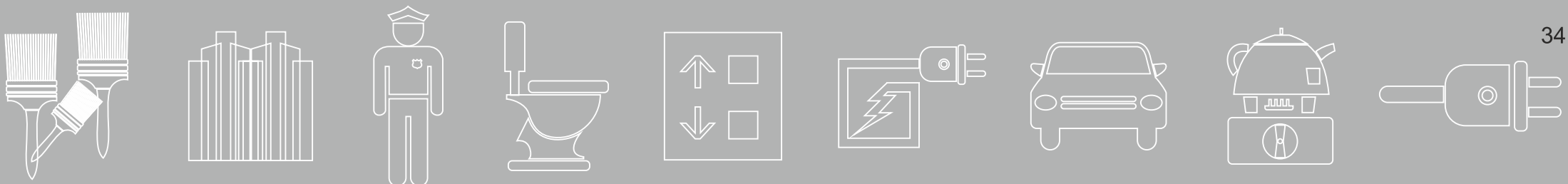
Environment friendly design -Zero discharge



Metro, Rail, Road and Airport



Abundant natural light and ventilation



Sophisticated Specifications

STRUCTURE

- RCC framed structure with concrete block / porotherm / light weight blocks for the walls.
- Two level basement car parking
- Floor to Floor height 3.3 mt. (11 ft.)

FLOORING

COMMON AREAS

- Lift lobby / corridors: Imported/Italian marble flooring.
- Staircase: granite / kota stones

APARTMENT

- Foyer/Living/Dining: Imported/Italian marble flooring
- Master Bedroom: Laminated wood flooring
- Other Bedrooms & Kitchen : Large size Vitrified tiles
- Balcony & Utility : Vitrified tiles with wood look finish
- Toilets : Antiskid Vitrified tile flooring, Glazed tile dado up to false ceiling height

FALSE CEILING

- False ceiling using gypsum board for living, dining and bedrooms.

DOORS & WINDOWS

- Apartment main door 2.4 mt. (8 Feet) height with teak wood frame & shutter
- Internal doors in hard wood frame with masonite skin on both sides
- UPVC sliding doors & windows with glazing and mosquito mesh

RAILING

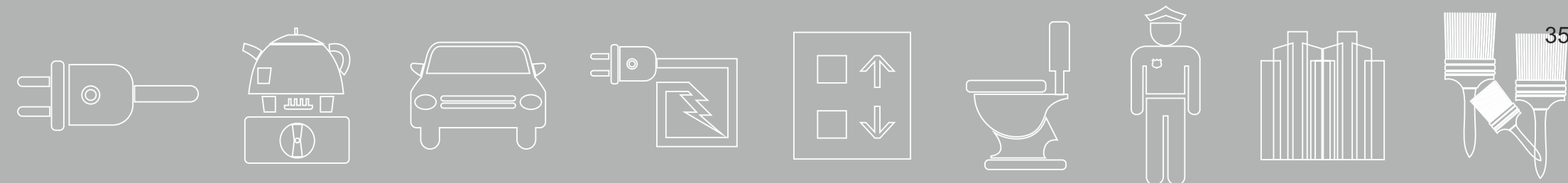
- MS railing for all staircases and balconies

PAINT

- Acrylic Emulsion paint for internal ceilings and walls
- Long lasting weatherproof paint with texture finish for exterior walls

BATHROOM FITTINGS & ACCESSORIES – (Imported Fittings)

- CP fittings of Grohe / Kohler / Delta or equivalent
- Sanitary Fittings of Vinci / Duravit / Hatria or equivalent
- Concealed cistern of Geberit or equivalent
- Glass Shower enclosure for master bathroom
- Exhaust Fan for Windows / Ventilators



KITCHEN

- Polished Granite Slab 2' width for Counter
- Ceramic tile Dado 2' height
- Stainless Steel Sink with Sink Mixer
- Reticulated gas piping connection
- Exhaust Fan for Windows

UTILITY

- Provision for sink, washing machine, dish washer & water heater
- Ceramic dado far walls

POWER SUPPLY

- 7KW for 4 BHK apartment and 6KW for 3 BHK & 3 BHK + Study
- Effective 100% power backup
- Solar based hot water system for Top Five floors

AIRCONDITIONING

- Centralised air-conditioned apartment with VRV system in living, dining and bedrooms. Mitsubishi/Daikin or equivalent.

ELEVATORS

- 2 high speed elevators in each tower – one passenger and one service - Mitsubishi

SECURITY & AUTOMATION

- Video door phone system
- Perimeter and entry points monitoring through CCTV system
- Smart Home features

FIRE SAFETY

- Apartment will have sprinkler facility. Firefighting system in each tower, including external yard hydrants.
- Gas leak detectors