



CORE  
WATER







OTHERS LAND



40'-0" WIDE ROAD

NOTES:  
 1. ALL DIMENSIONS ARE IN METERS UNLESS OTHERWISE SPECIFIED.  
 2. ALL DIMENSIONS ARE TO FACE UNLESS OTHERWISE SPECIFIED.  
 3. ALL DIMENSIONS ARE TO FACE UNLESS OTHERWISE SPECIFIED.  
 4. ALL DIMENSIONS ARE TO FACE UNLESS OTHERWISE SPECIFIED.  
 5. ALL DIMENSIONS ARE TO FACE UNLESS OTHERWISE SPECIFIED.  
 6. ALL DIMENSIONS ARE TO FACE UNLESS OTHERWISE SPECIFIED.  
 7. ALL DIMENSIONS ARE TO FACE UNLESS OTHERWISE SPECIFIED.  
 8. ALL DIMENSIONS ARE TO FACE UNLESS OTHERWISE SPECIFIED.  
 9. ALL DIMENSIONS ARE TO FACE UNLESS OTHERWISE SPECIFIED.  
 10. ALL DIMENSIONS ARE TO FACE UNLESS OTHERWISE SPECIFIED.

REVISIONS

NO.	DATE	REVISION
1		
2		
3		
4		
5		
6		
7		

ARCHITECTS  
**Malhotra & Associates**  
 8th Floor,  
 C-88, Hand in Hand Park Road,  
 J.P. Nagar, Gurgaon, Haryana  
 Ph: 0122-2708012, 2708013  
 Email: info@malhotra-associates.com

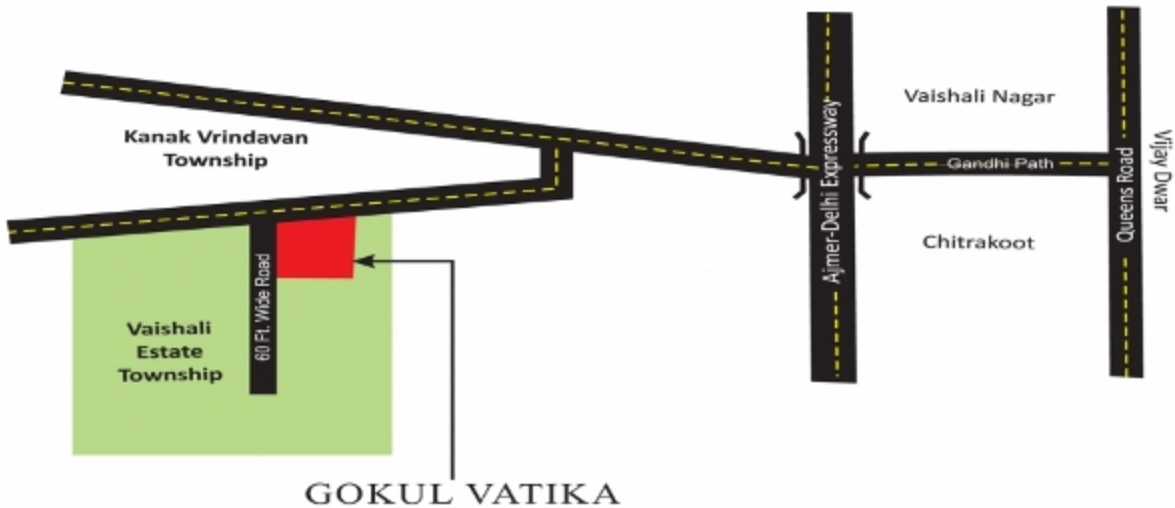
PROJECT:  
 PROPOSED FLATS AT  
 SRI SRI VILLAGE, JAPUR

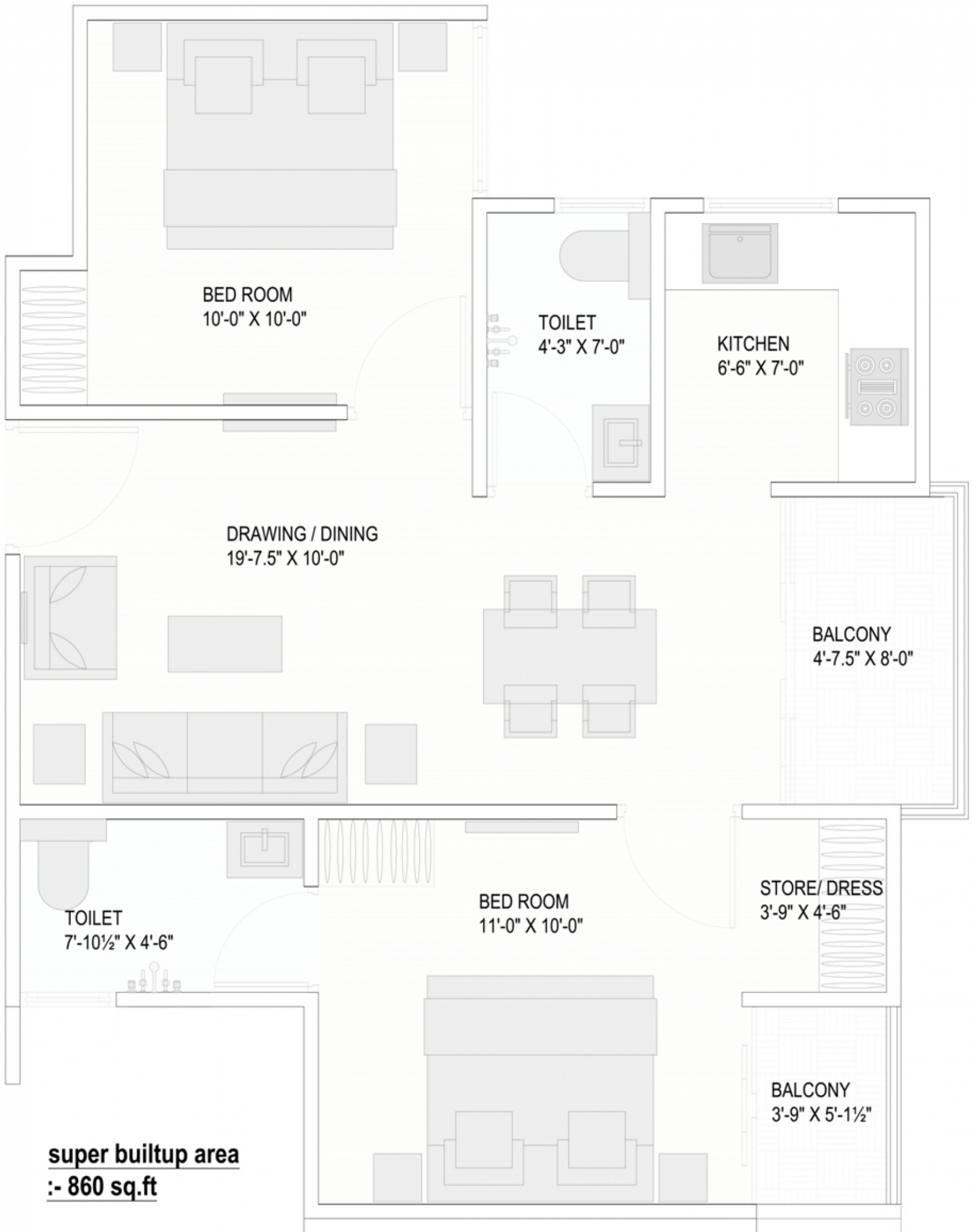
DRAWING NO.:  
 DATE: 20/08/2019  
 SCALE: 1/8

DRAWING NO. (A) PROJECT

DATE:







**super builtup area**  
**:- 860 sq.ft**



