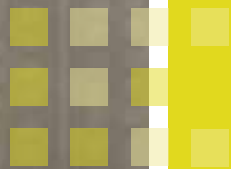


A photograph of a modern building with a complex, perforated metal facade. The building is illuminated from within, creating a warm glow that filters through the intricate patterns of the metal. The sky is a soft, hazy orange, suggesting dusk or dawn. In the foreground, there is a dark, curved structure, possibly a roof or a wall, and some blurred light trails at the bottom. The overall mood is futuristic and sophisticated.

Embrace the future





## A new level of boutique living

Based on the winning design from Living Steel's International Architecture Competition, *Restello* reinvents luxury living.

Conceived by UK architects Piercy Conner, *Restello* combines traditional Eastern architecture with innovative sustainable practices to create the very latest in modern living experiences. The steel structure allows for long spans, creating uninterrupted living spaces; and the perforated façade filters the light while providing natural ventilation. It's your very own urban utopia.

Featuring 12 boutique duplex homes, with enviable double height terraces, *Restello* espouses the latest in smart, sustainable residential design without compromising liveability.



Restello has been designed to provide optimum comfort in a secure and private setting.

This is open plan living at its most luxurious and sophisticated. The two storey floor plan accommodates three or four bedrooms (each with en suites), a generous kitchen, and an expansive living and dining area. Secure lifts stop at each floor. Complete the picture with your choice in finishes and fittings, and you will have created your own personalised sanctuary.

## Designed to fit your lifestyle

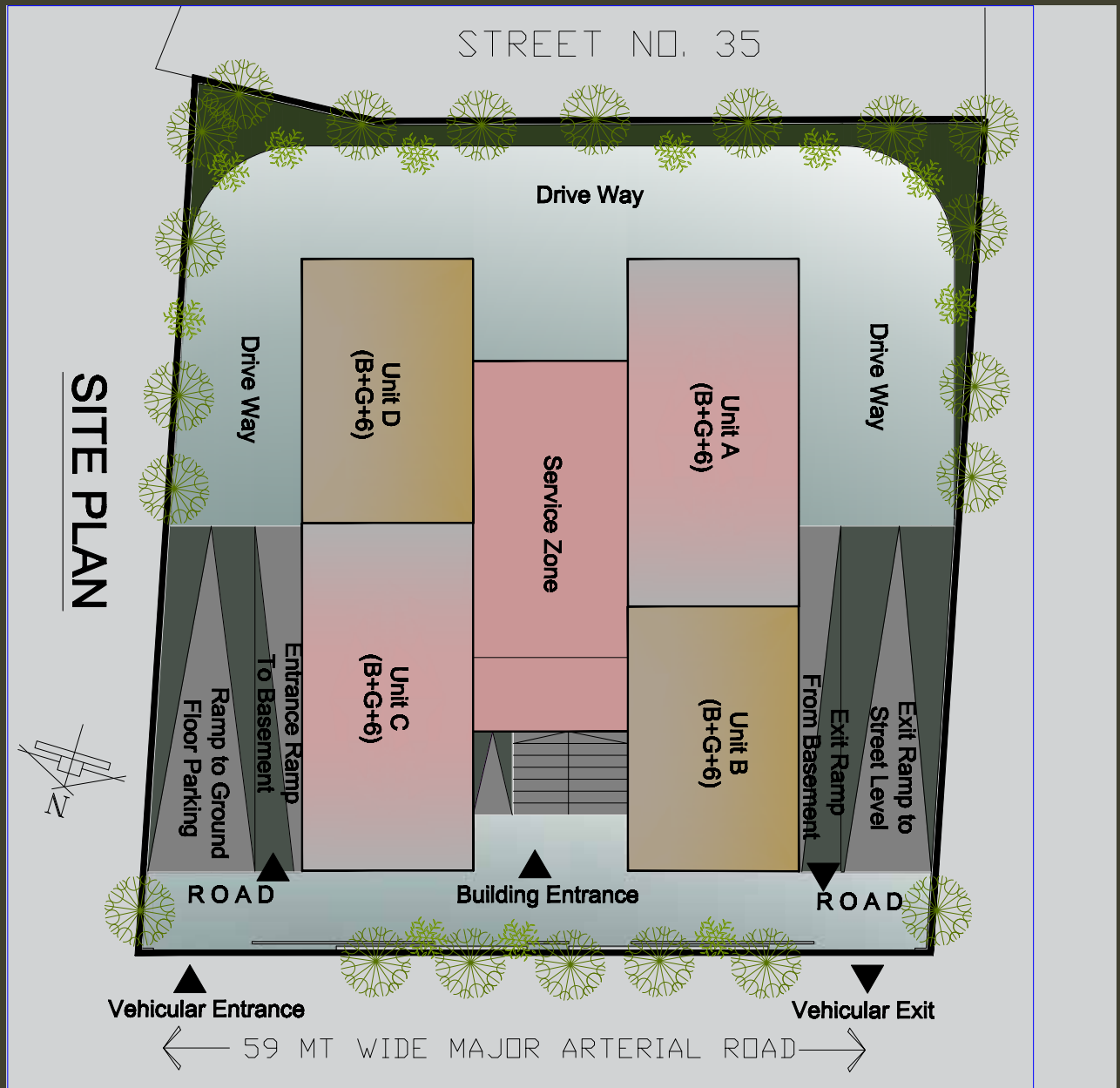


## Wrap yourself in comfort

Restello offers a harmonious balance between the outside world and your own personal space. Each apartment boasts a double height terrace, encased in an adjustable perforated steel façade. Which means you can allow fresh air to circulate, without ever compromising your privacy or security. The façade also provides greater thermal comfort and less need for air-conditioning.

Restello uses recycled steel, reducing the material used and energy intensity in the manufacturing process. Galvanised and painted steel protects against corrosion, damp and termites - ensuring a longer life for your home.





## Blueprint for the future

*Restello* boasts six three-bedroom and six four-bedroom duplex style apartments, designed to maximise natural direct sunlight throughout parts of the day.

The ground floor has a fully equipped gym, storage area for each apartment, and room for domestic workers.

## Quality living inside and out

Whether entertaining with family and friends on the large terrace or relaxing with a book in the living area, these apartments are designed to enhance your quality of life at home.

Finished with care and finesse, *Restello* apartments set a new standard of luxury living.

### Three-bedroom apartments:

- Total Area: 2520 ft<sup>2</sup>
- Guest Bedroom: 123 ft<sup>2</sup>
- Master Bedroom: 167 ft<sup>2</sup>
- Child Bedroom: 165 ft<sup>2</sup>
- External Terrace Area: 400 ft<sup>2</sup>

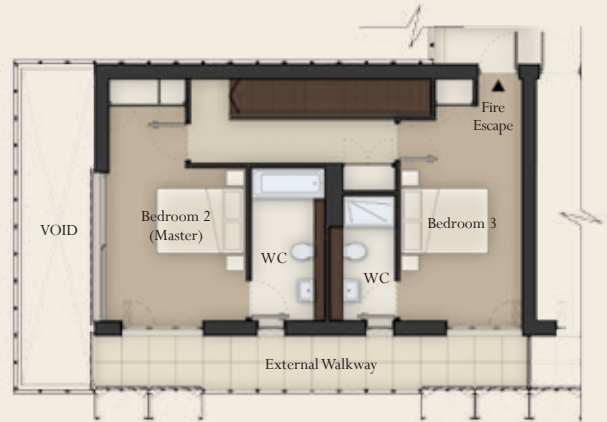
### Four-bedroom apartments:

- Total Area: 3375 ft<sup>2</sup>
- Guest Bedroom: 136 ft<sup>2</sup>
- Master Bedroom: 207 ft<sup>2</sup>
- Child Bedroom 1: 183 ft<sup>2</sup>
- Child Bedroom 2: 114 ft<sup>2</sup>
- External Terrace Area: 502 ft<sup>2</sup>



**3 Bedroomed Maisonette Area:**  
2520 ft<sup>2</sup>

**3 Bedroomed Maisonette**  
Lower Floor



**3 Bedroomed Maisonette**  
Upper Floor



**4 Bedroomed Maisonette Area:**  
3375 ft<sup>2</sup>

**4 Bedroomed Maisonette**  
Lower Floor



**4 Bedroomed Maisonette**  
Upper Floor



## A New Age In Kolkata



New Town represents a new age of urbanisation in Kolkata. Spread across 3075 hectares and housing over 7.5 lakhs people, the area is supported by many facilities such as schools, healthcare centres, commercial facilities, and is only 10km from the International airport.

With the abundance of lush green parks and gardens in the area, it is no wonder New Town is fast becoming one of the most sought after addresses in the city.

## Sales Enquiries

+91 33 3984 3984  
[www.shrachi.com/bengalshrachi](http://www.shrachi.com/bengalshrachi)

## Project Partners



### The Shrachi Group

The Shrachi group is engaged in diverse businesses ranging from real estate and agro-machinery to engineering, finance, IT, medical services and others.

Over the last decade, Shrachi Group has delivered quality real estate solutions. In fact, some of Kolkata's landmark residential, commercial and retail projects have been created by Shrachi Developers Private Limited, Shrachi Realty Private Limited and Bengal Shrachi Housing Development Limited.

Additional ventures include Healthcare, Information Technology, Financial Services, Engineering and Agriculture.

For more information visit [www.shrachi.com](http://www.shrachi.com)



### Piercy Conner, UK

Celebrated as one of the most promising architectural studios in the UK's '40 Architects Under 40', Piercy Conner has established a reputation for creating innovative and bespoke architecture, each project tailored to the unique conditions of the site. Eschewing traditional thinking or a self-proclaiming house style, Piercy Conner designs by assessing and responding to the individual context of each project.

The result is a diverse portfolio of internationally recognised and award winning work ranging from the ethereal to the earthy, visually distinct yet connected by an underlying commitment to authenticity.

[www.piercyconner.co.uk](http://www.piercyconner.co.uk)



### Living Steel

Living Steel, a worldwide, collaborative programme designed to stimulate innovative and responsible housing design and construction was launched in 2005 by the World Steel Association. The programme was developed to help address the unprecedented pressure on infrastructure, communities and the quality of people's lives stemming from growing urban populations.

Funded through the contributions of the world's leading steel manufacturers, the Full Members of Living Steel include ArcelorMittal, Baosteel, BlueScope Steel, CELSA Group, Corus, Erdemir, IMIDRO, Posco, Ruukki, Severstal and Tata Steel.

[www.livingsteel.org](http://www.livingsteel.org)

