



PINTAIL
PARK CITY



PINTAIL INFRACON LLP
7th Floor, Eldeco Corporate Tower, Vibhuti Khand
Gomti Nagar, Lucknow - 226 010
T +91 522 4963000 | E info@pintail.co.in
www.pintail.co.in

RERA CERTIFIED: UPRERAPRJ15457 | LDA APPROVED





Sometimes, one comes across a little piece of
heaven.



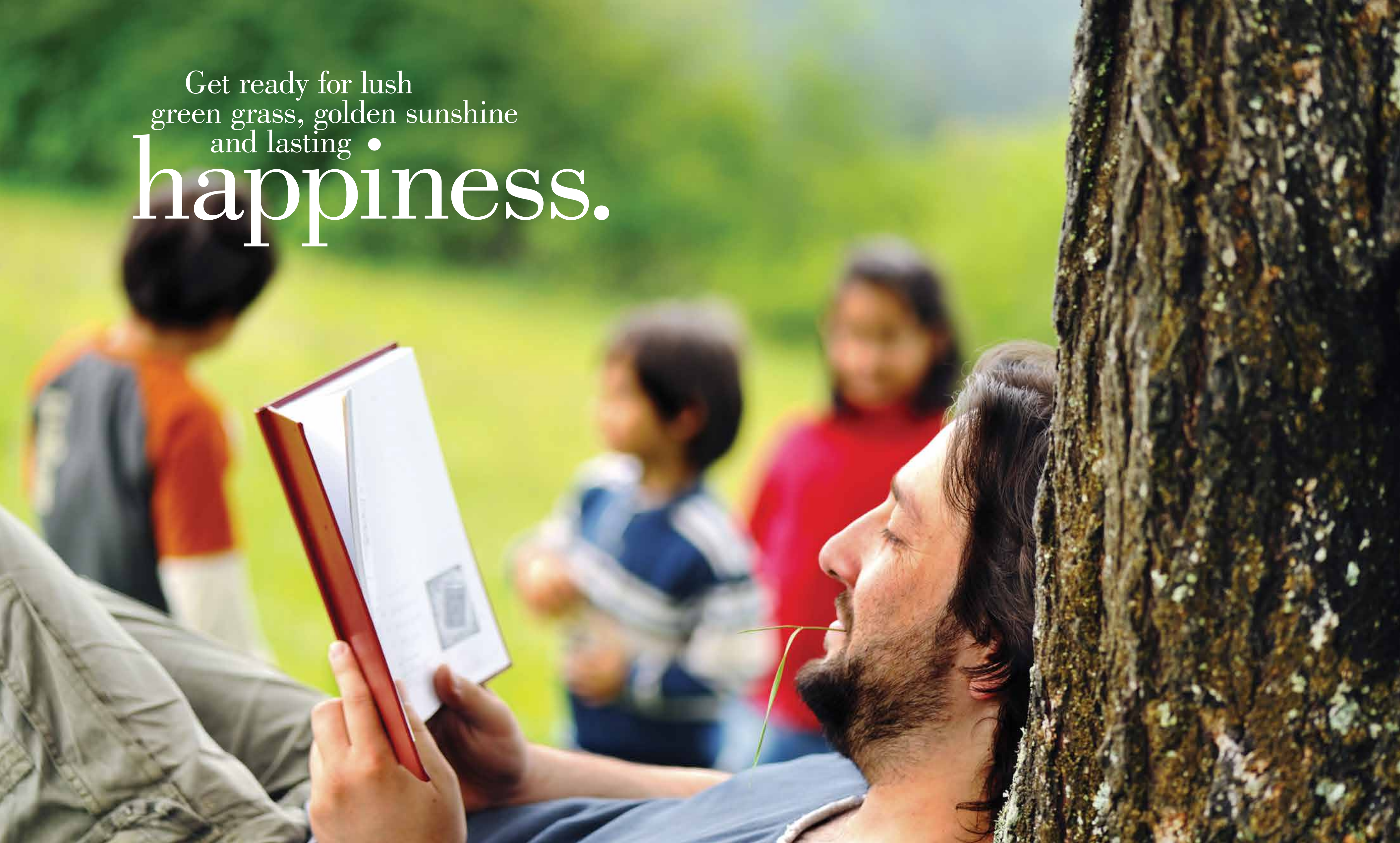
Somewhere,
one discovers
a world of

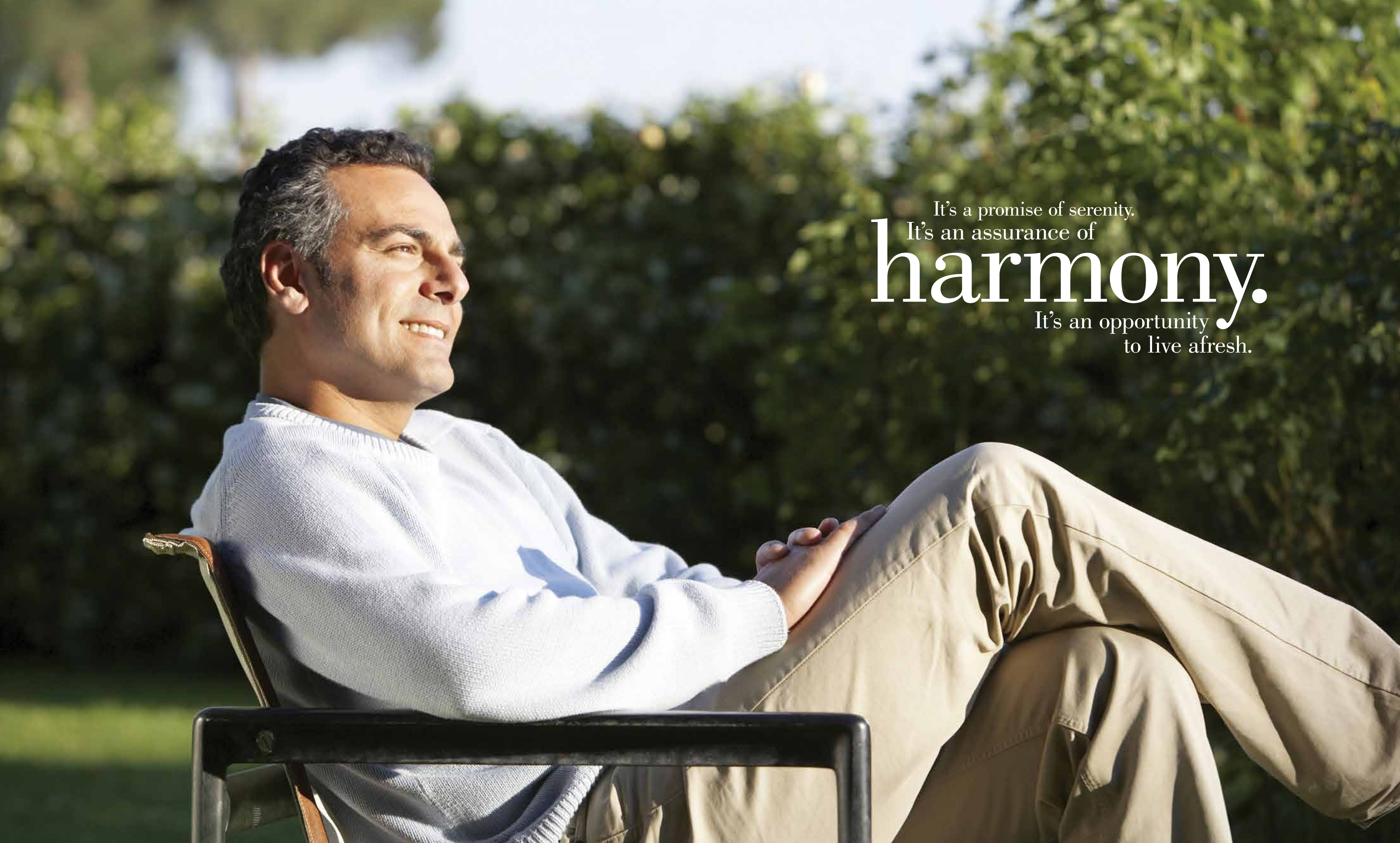
solitude.



Somehow, the whistling
of trees and birdsong
sound much
sweeter.

Get ready for lush
green grass, golden sunshine
and lasting •
happiness.





It's a promise of serenity.
It's an assurance of
harmony.
It's an opportunity
to live afresh.



PINTAIL
PARK CITY

Add a new chapter
to your
wonderful
life.

Pintail Park City.

It's the life you deserve.

SULTANPUR ROAD

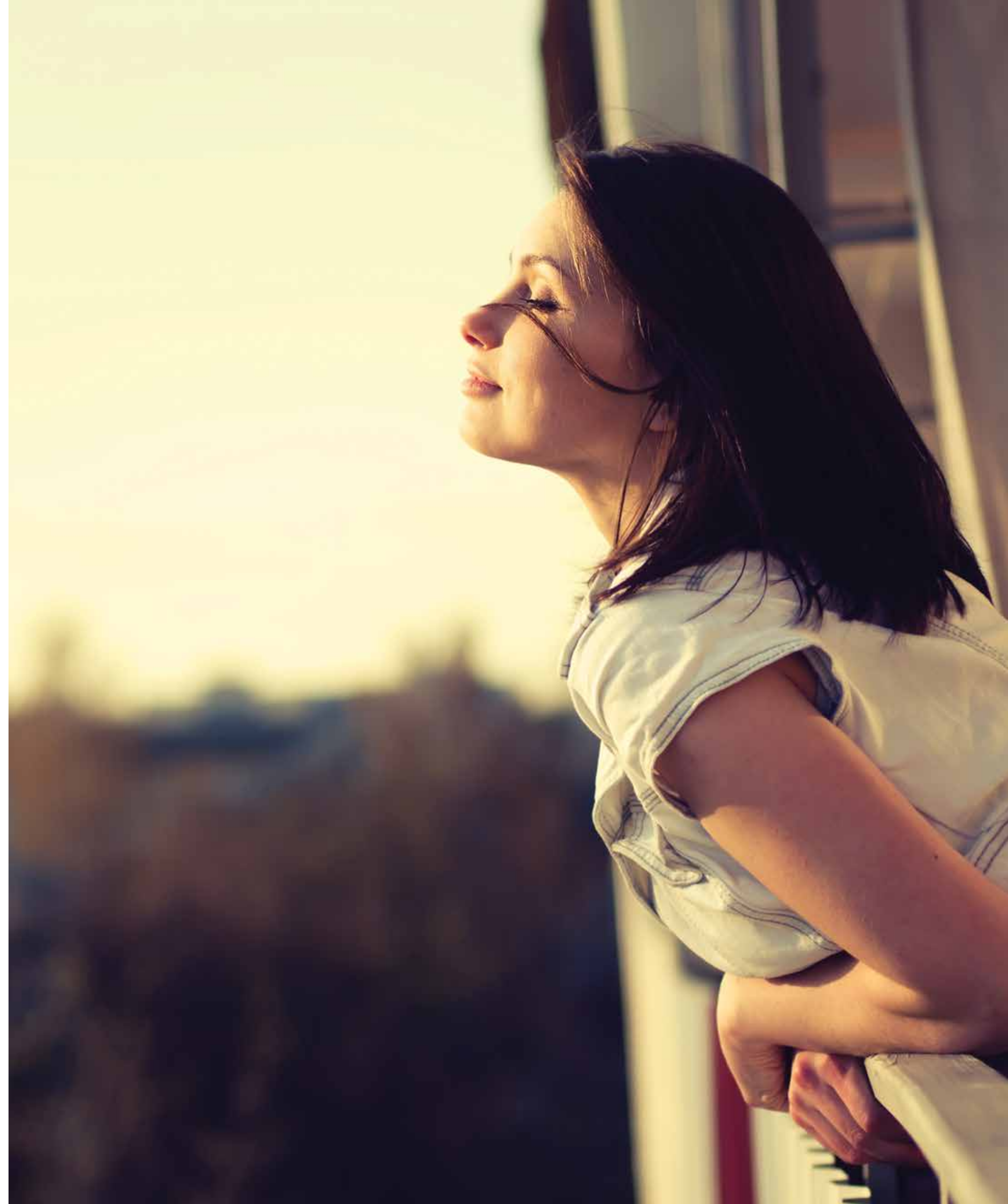
60M WIDE MASTER PLAN ROAD

45M WIDE MASTER PLAN ROAD





An ecosystem called
Pintail Park City.
Where aesthetics meet •
sustainability.





Space
that sets you free.

Located in a neighbourhood perfect for family life to thrive in.

From the airport, drive down Amar Shaheed Path and proceed on the road to Sultanpur. In under two minutes, you'll pass by the IT City and Cancer Institute. Opposite the Amul Dairy Plant and The IT City is Pintail City, a 200-acre integrated development.



HCL IT City, Lucknow

Conceived as a sustainable technology hub with clean power and balanced environment, the IT City, Lucknow, is part of the mega CG City project envisioned by the Government of Uttar Pradesh. It is being built around the PPP model, in partnership with HCL Technologies. The Uttar Pradesh Government has established the Rs. 1,500-crore Information Technology (IT) City over 100 acres with the concept of 'Walk to Work' on the Lucknow-Sultanpur Road.

CG City is a planned development of around 800 acres by the State Government which, other than IT & ITes (100 acres), will accommodate a host of developments:

- International Cricket Stadium
- 5-Star Hotels
- Shaan-E-Awadh Shopping Mall
- IIIT and CSI Towers
- World-Class Cancer Hospital and Research Institute
- IAS and PCS Training Academy
- Amul Milk Plant



International Cricket Stadium



Shaan-e-Awadh Shopping Mall



TOWNSHIP OVERVIEW

- 1 ENTRANCE BOULEVARD
- 2 COMMERCIAL COMPLEX
- 3 SPORTS GREEN
- 4 HEALTH CENTRE
- 5 EDUCATION FACILITY
- 6 GROUP HOUSING
- 7 CLUB HOUSE
- 8 LANDSCAPED WALKWAYS & GREENS
- 9 WATER FRONT DEVELOPMENT
- 10 EWS & LIG
- ENCLAVE GREENS



A warm welcome
awaits you at Pintail Park City.

Designed for an unmatched way of life, within four walls and out in the open. At Pintail Park City you'll be welcomed by soothing environs marked by a variety of facilities and amenities. A signature Spanish style and refreshing colour palette invite you to experience life at its best. Planned walkways, scenic parks, leisure and recreational facilities complete the experience of modern living. Pintail Park City has been designed as a self-sustained and modern eco-friendly township that would provide you a range of options in residential, commercial, educational and recreational spaces.





Where the soul
connects with the
spirit of the land.
Pintail Park City.

Park City offers its residents contemporary living at its best. It is not only designed to enhance community living, but also a sense of belonging. It has everything that says, "You are worth it."

Residential

- Plots
- Villas
- Independent Floors
- Group Housing

Commercial

- Convenient Shopping
- Shopping Arcade

Education Facilities

- Nursery & Primary Schools
- Secondary Education Facilities

Health Facilities

- Child Welfare
- Maternity Home
- Health Centre

Water Front Development

- Road Side Walkway - 7.5 Kms
- Amphitheatre
- Event Lawn
- Kids Park
- Sculpture Park
- Fruit Orchard
- Food Court
- Shopping Plaza

Musical Fountain

- Plants Nursery
- Gazebo
- Bridges
- Garden of Five Senses
- Food Orchard
- Promenade

Club House

- Swimming Pool
- Restaurant
- Cards/Carrom/Pool/
Squash Court
- Badminton Court
- Outdoor Games Facilities
- Indoor Games Facilities

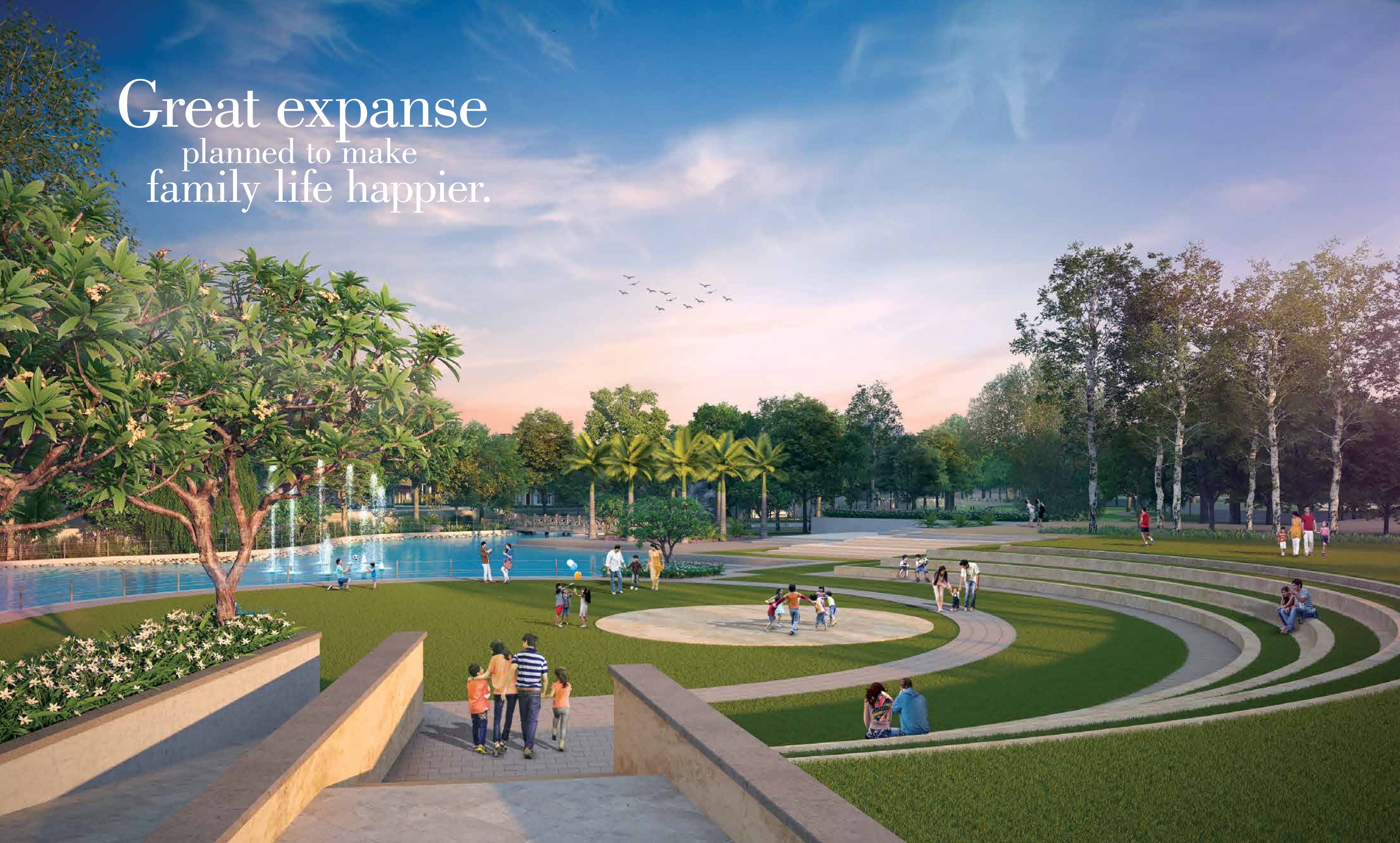
Enclave Park

- Tree Court
- Sculpture
- Pergola with Seating Area
- Kid's Play Area
- Half Basketball Court
- Walkway
- Outdoor Gymnasium
- Senior Citizen's Plaza
- Butterfly Garden
- Parterre Garden

Infrastructure

- 9/12/18/24/30 Metre Wide
Internal Roads
- Enclave & Sector Parks
- Sports Facilities/Greens
- Storm Water/Drainage/Water/
Irrigation Lines
- Overhead Tank/Underground Tank
- Electricity Substation
- Electricity Back-up in
Common Areas
- Underground Cabling
- Wi-Fi Enabled Community
- Solar Lighting
- STP and Vermi Composite
- Garbage Disposal Facilities
- Fire Fighting Line

Great expanse
planned to make
family life happier.





Future-ready. Modern development.

- A SMART ECO-township of approx. 200 acres, conceived to include lush green environs and modern infrastructure.
- Direct access from 4-Lane Sultanpur Road and easy connectivity to Airport.
- Designed as one of the first planned, gated residential communities in the Gomti Nagar Extension area.
- Thriving neighbourhood with offices, retail, schools, medical facilities and convenience stores planned.
- Signature entrance gate to give a grand sense of arrival.
- Wide internal roads - street lighting with solar LED lights with emphasis on aesthetics.
- No overhead electrical cables or services.
- 24x7 power back-up for street lights and common areas.
- Independent water supply of drinking water within community.
- Optic fibre ready WiFi community.
- CCTV secured community.
- Environment-friendly rainwater harvesting system within the project.
- Tree-lined streets and parks with play area with environment friendly swings, slides for children and paved walking/jogging tracks.





FENTAIL
PARK CITY

Welcome to an experience
like no other, like
nowhere else.



Villas and plots that perfectly match your lifestyle.

Homes as beautiful as your imagination.

Plot sizes - 194 sq. yards (162 sq. metres), 240 sq. yards
(200 sq. metres), 300 sq. yards (250 sq. metres),
402 sq. yards (336 sq. metres), 500 sq. yards (418 sq. metres),
1000 sq. yards (836 sq. metres).

PINTAIL

PARK CITY

A home that appeals
to the inner being.





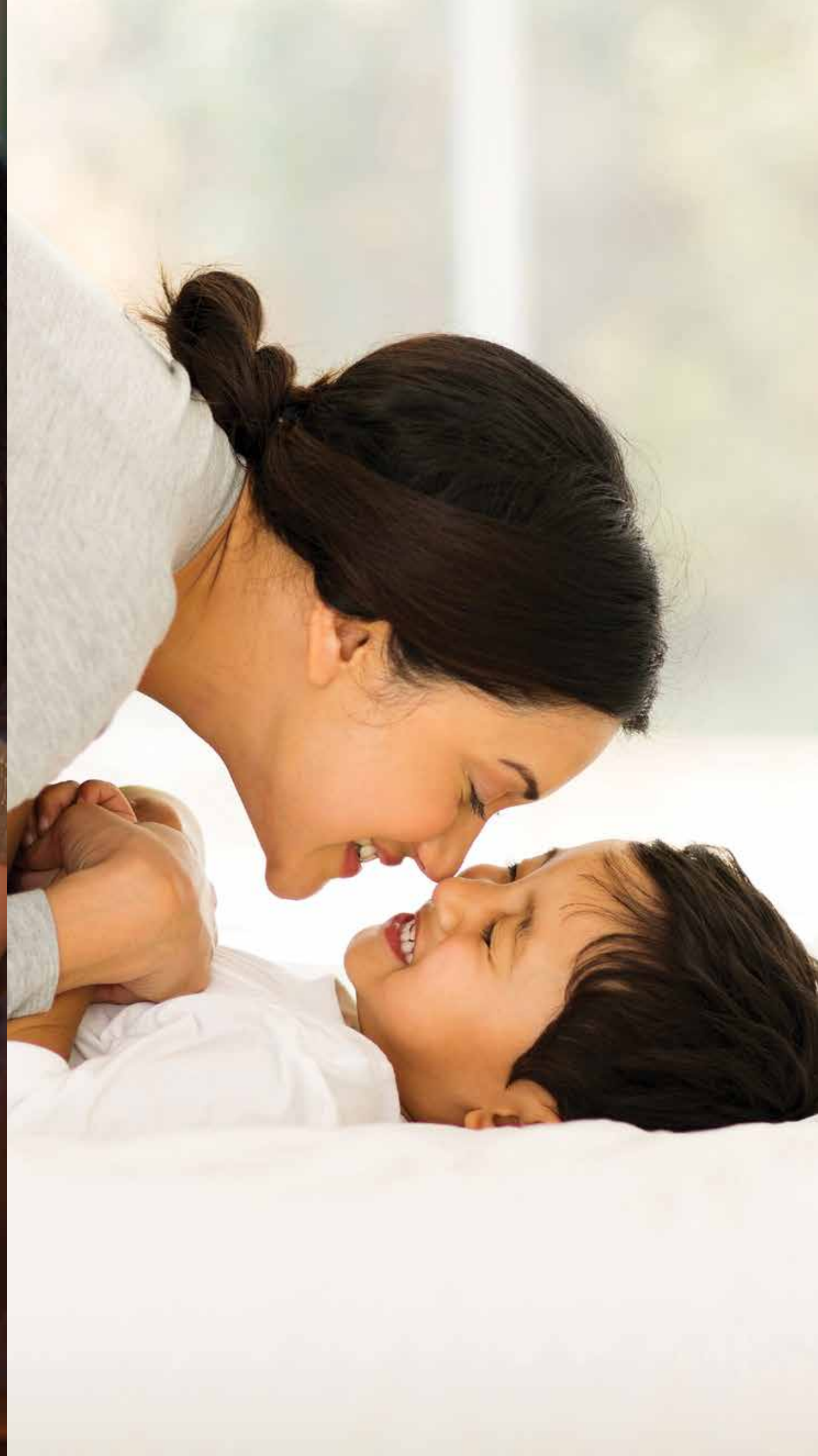
Independent Floors.
A home designed
to let your
inner self flourish.

Stilt plus 3 Floors - Three Bedroom Premier Homes.

PINTAIL
PARK CITY



Living spaces that **breathe.**



An aerial, high-angle view of a modern residential development. The image shows several long, parallel rows of houses with light-colored walls and dark brown tiled roofs. The houses are interspersed with lush green lawns, palm trees, and other tropical vegetation. A winding road or path cuts through the development. In the background, a large, well-maintained golf course is visible, along with a blue water feature or pond. The overall scene is bright and sunny, suggesting a warm climate.

The perfect life
with premium space.

Clubhouse.

A few thousand
square feet
of joy.



The Clubhouse. To unwind. Refresh. Energise.

The choicest recreational facilities will be available for the use of residents and their guests to wind down after a hard workday or enjoy a relaxed weekend.





Live a life of luxury
with impeccable style.

Ideas that sustain
the environment,
yours and mine.





Landscaping for aesthetics. And for the community.

‘Your home is a garden,’ is an apt description for Pintail Park City. This complete eco-system is governed by a landscape design that combines the modernist and the vernacular, and is always innovative. Terraced plazas, gardens with diverse plants including the medicinal, herbal, scented and ornamental, meandering walkways and roads concealed by trees.

It is also an effort to build a community of like-minded people who cherish the idea of living and interacting with the environment and relating to each other. This is where neighbours become friends and friends become a community.



North India's latest success story,
scripted by a team
driven by passion.



PINTAIL Park City is a vision taking shape, a landmark project that truly represents the pioneering spirit that set up Pintail Infracon LLP in 2008. And the company always keeps in focus its commitment to create modern developments, and benchmarks in quality residential and commercial real estate development that Indians deserve.

A team of young entrepreneurs have established the Pintail Group for providing smart eco-friendly developments in residential, commercial, institutional and infrastructure space in the realty sector.

At PINTAIL, our vision is to present engaging and innovative experiences through our developments, creating benchmarks in the realty sector. On the back of innovative eco-friendly designs and processes built around integrity and transparency, the Group has built an enviable reputation in a fairly short span. Every project is proof of the PINTAIL Group's drive to change expectations and improve the lifestyle of the people through quality, transparency, and trust. And no other project showcases this better than Pintail Park City. This pioneering project is master planned by the internationally acknowledged Arcop Associates of India and complemented by the expertise of one of the best interdisciplinary landscape architecture firms - Design Cell. Indians are ready for the finest, and the Pintail Group is determined to deliver just that.





Images and facilities shown in this brochure are only representational and informative. Information, images and visuals are only indicative of the envisaged development and the same are subject to change in actuals as per approvals. The views shown in pictures may vary over a period of time and do not guarantee the same. All intending purchaser(s) are bound to inspect all plans and approvals and visit the project site and apprise themselves of all plans and approvals and other relevant information obtained from time-to-time from respective authority. The promoter holds no responsibility for its accuracy and shall not be liable to any intending purchaser or anyone for the changes/alterations/improvements so made.