

Ready For Possession



TRIMURTY'S
PRIME TOWER
IT'S ABOUT THE EDGE



Let us help you in your office. Commercial spaces are ready for your possession

Shop & Showroom Office
For Booking Call: 9928018796

- Facilities
- Offices
- ATM Facility
- Shops
- Café

Corporate office
401, Green Kingdom,
G-2, Vaidya Marg,
C-Section,
Jaipur-302004

Member
CREDAI

TRIMURTHY'S PRIME TOWER

एक्सिस बैंक **AXIS BANK**
प्लेस टु गेट रिजल्ट्स ऑनलाइन

श्री



TRIMURTY'S
PRIME TOWER

All your business needs, and more.

the LOCATION edge

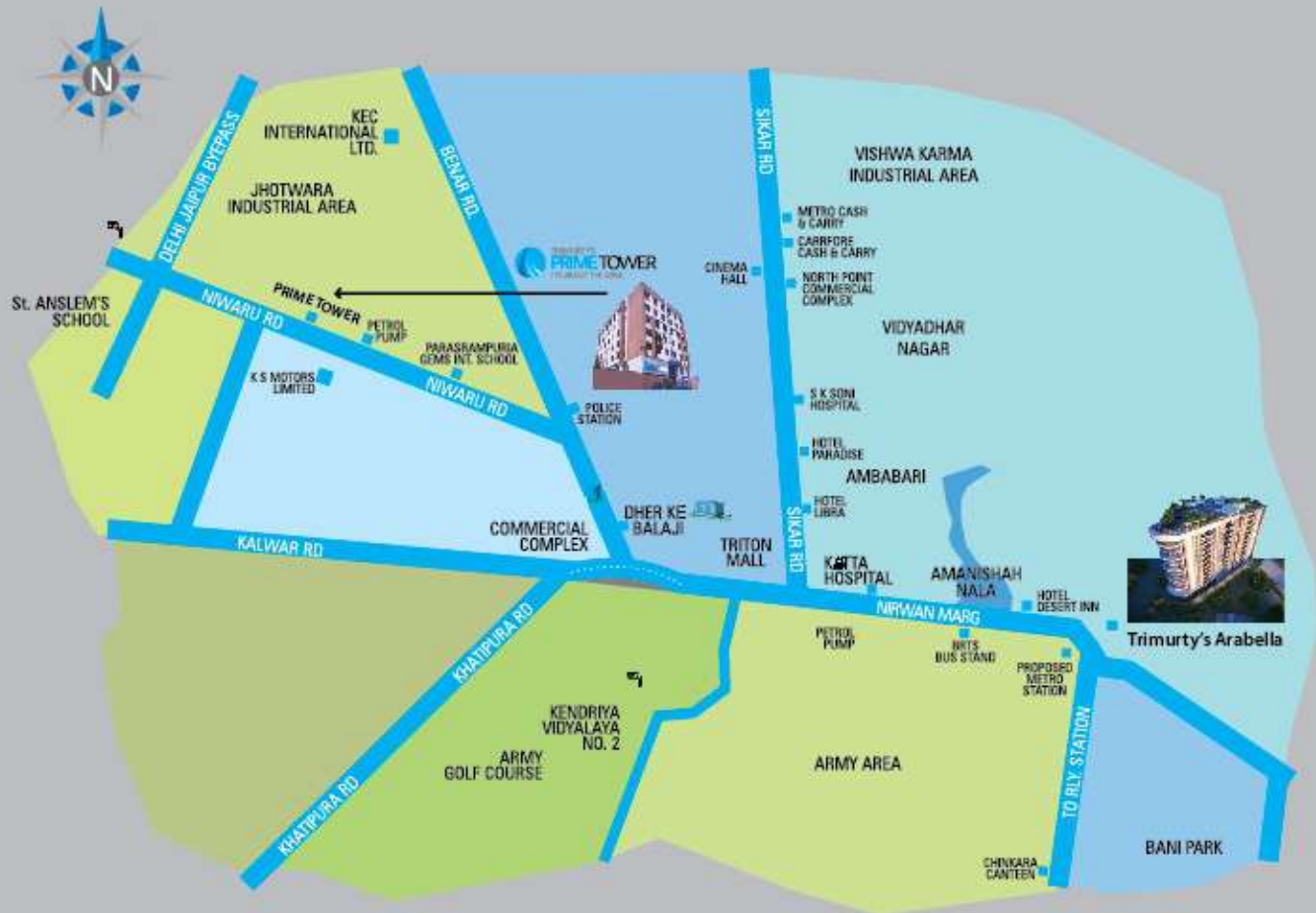
Located on 160ft. Niwaru Road, Jhotwara, Trimurty's Prime Tower is excellently positioned in the rapidly growing Jhotwara Industrial Area. It is less than 2 km from Triton Mall, Rajasthan's biggest mall & Sikar road.



Indian Bank

WARNING
No-Clamp Area
No vehicle allowed
Penalty: ₹5000





DISTANCE CHART

- Jhotwara Ind. Area : 0 km
- Vishwakarma Ind. Area : 4 km
- Sikar Road : 2.5 km
- Kalwar Road : 2 km
- Khatipura Road : 2 km
- Vaishali Nagar : 5 km
- Triton Mall : 2.5 km
- Ambabari : 3 km
- Railway station : 5 km
- Bus Stand : 5.5 km
- M I Road : 7 km
- St. Anslem's school : 2.5 km
- Parsarapura Gems International School : 0 km
- Pani Pech : 3.5 Km
- Soni Hospital : 4 Km



TRIMURTY'S PRIME TOWER LOCATION

Jhotwara Industrial Area itself is going to be the hub of business activities with commercial towers coming up by the dozen. Yet, the area is never too congested thanks to the wide roads and great traffic controls due to its proximity to the City Center.

To sum it up, it's located at a spot which is easy and quick to reach from any part of the city, is uncongested and is the upcoming center of business activity.

The enviable location, excellent visibility and the feature-packed complex make Trimurty's Prime Tower an ideal location for your business, be it an exclusive showroom cum retail office, coffee shop or bank. While showroom cum retail offices are available on the ground & the first floor, 2nd and above floors have offices. Minimum office spaces starts from 400 sq.ft. and can be taken in multiples of 2 offices upto 8000 sq.ft per floor as per your requirement. There is provision for a roof-top restaurant as well.





Trimurty's Prime Tower is approved commercial project by RIICO and is now ready for possession. With almost all the best cards ,Trimurty's Prime Tower is a great investment opportunity.

the INVESTMENT & SECURITY edge

the BUILDING edge

Trimurty's Prime Tower is designed keeping in mind the requirement of a good and practical commercial building. It has modern architecture, quality finishes, wide corridors good day lighting and ventilation.

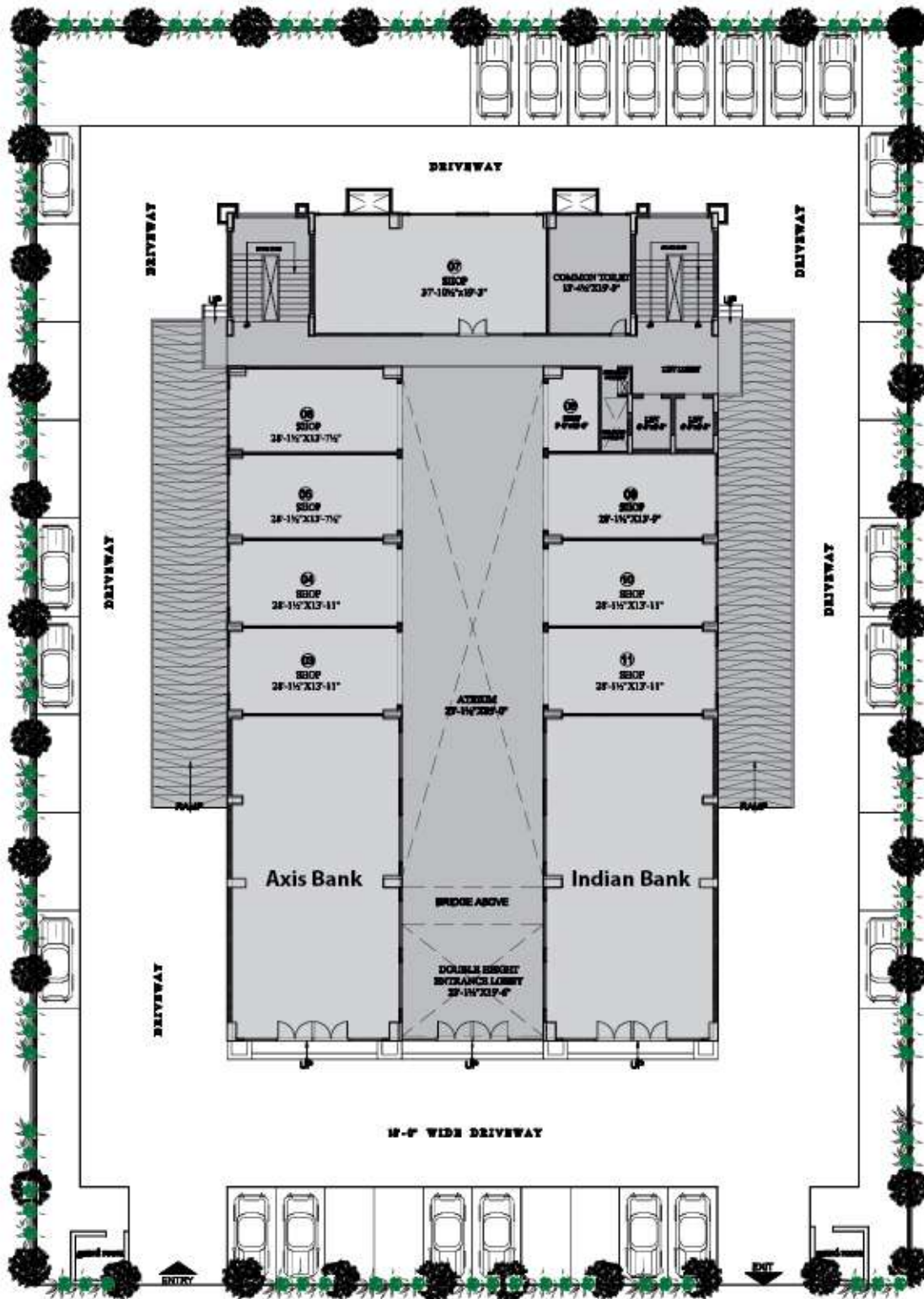




FACILITIES & FEATURES

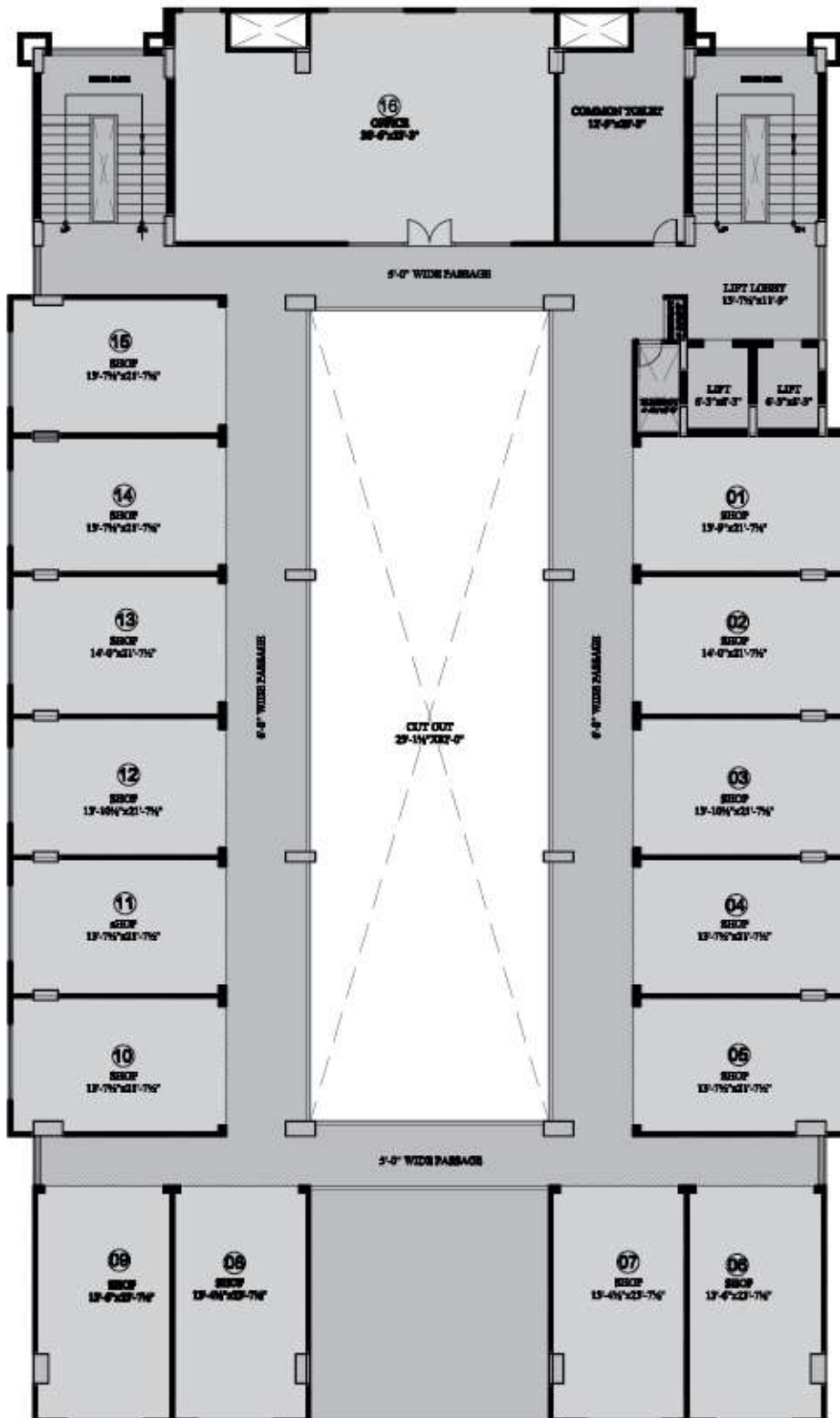
- Approved commercial project from RIICO
- Efficient planning and construction
- Ample parking on ground level and in basement
- Luxurious entrance lobby
- Stainless steel railing on staircase
- Well appointed public toilets
- Hi speed lifts
- Broad staircase
- Fire Fighting System as per norms
- Aluminium windows
- Professional building maintenance
- Common lobby floor lane vitrified tile / granite tile combination
- Vitrified tile flooring in showrooms & offices
- Centralized Music System
- 100% power backup
- 24Hrs manned security

GROUND FLOOR



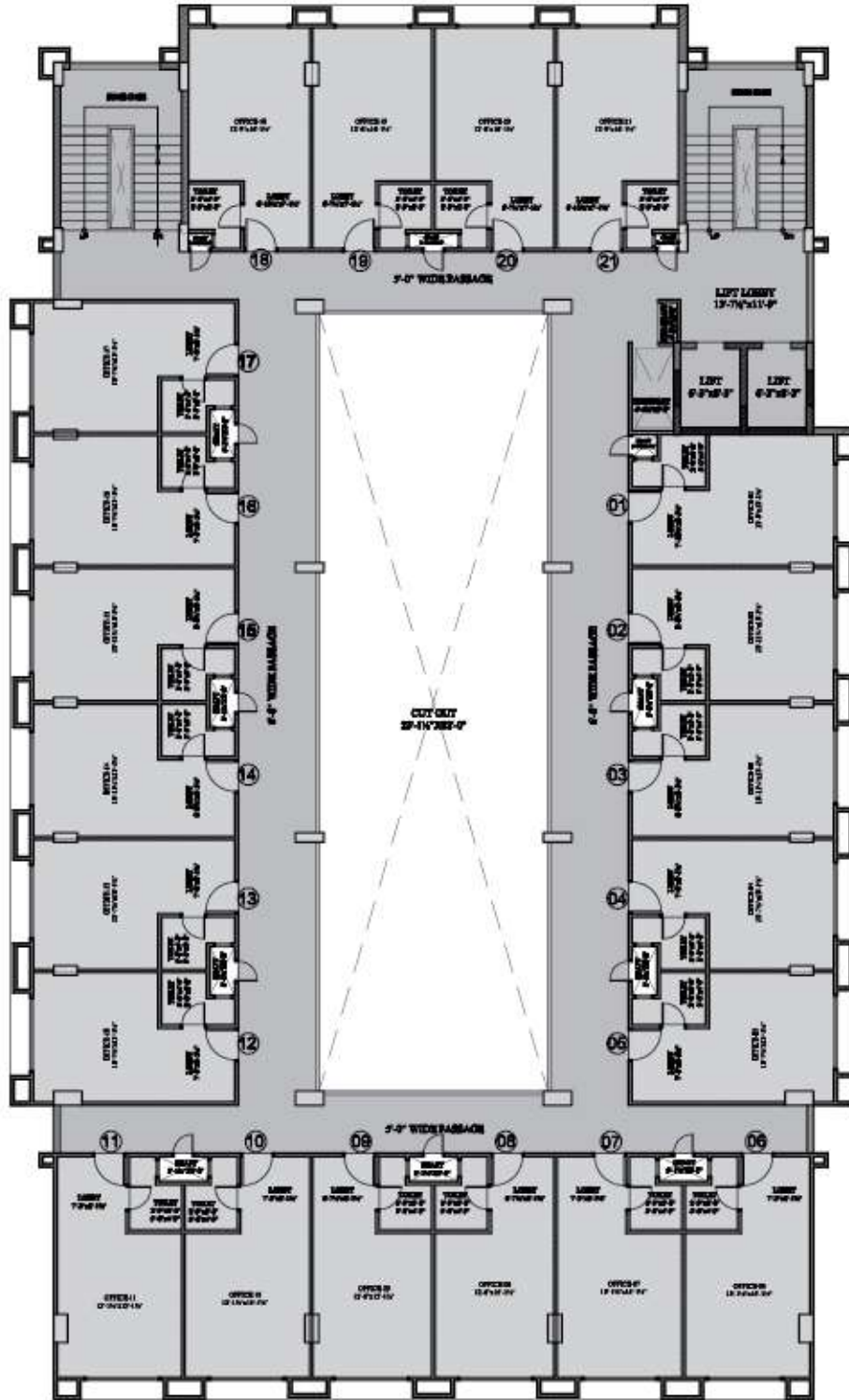
NO.	CARPET AREA IN SQ.FT.	BUILT UP AREA IN SQ.FT.	SALABLE AREA IN SQ.FT.	NO.	CARPET AREA IN SQ.FT.	BUILT UP AREA IN SQ.FT.	SALABLE AREA IN SQ.FT.
01	1420.93	1515.84	1993.33	07	723.78	780.00	1025.70
02	1420.93	1515.84	1993.33	08	107.71	131.83	173.36
03	377.60	407.90	536.39	09	374.22	406.14	534.07
04	377.60	407.90	536.39	10	377.60	407.90	536.39
05	369.46	399.00	524.69	11	377.60	407.90	536.39
06	365.31	404.34	531.71	Total	6292.74	6784.59	8921.74

FIRST FLOOR



NO.	CARPET AREA IN SQ.FT.	BUILT UP AREA IN SQ.FT.	SALABLE AREA IN SQ.FT.	NO.	CARPET AREA IN SQ.FT.	BUILT UP AREA IN SQ.FT.	SALABLE AREA IN SQ.FT.
01	286.40	315.81	415.29	10	280.42	312.12	410.44
02	290.37	316.25	415.87	11	282.85	308.00	405.02
03	288.07	313.50	412.25	12	288.07	313.50	412.25
04	282.85	308.00	405.02	13	290.37	316.25	415.87
05	280.42	312.12	410.40	14	282.85	308.00	405.02
06	305.43	337.50	443.81	15	281.92	312.12	410.44
07	302.57	334.50	439.87	16	856.37	920.00	1209.80
08	302.57	334.50	439.87				
09	305.48	337.50	443.81	Total	5206.96	5699.67	7495.07

TYPICAL
2ND - 6TH FLOOR



NO.	CARPET AREA IN SQ.FT.	BUILT UP AREA IN SQ.FT.	SALABLE AREA IN SQ.FT.	NO.	CARPET AREA IN SQ.FT.	BUILT UP AREA IN SQ.FT.	SALABLE AREA IN SQ.FT.	NO.	CARPET AREA IN SQ.FT.	BUILT UP AREA IN SQ.FT.	SALABLE AREA IN SQ.FT.
01	279.23	307.56	404.44	10	291.32	316.31	415.95	19	279.85	303.87	399.59
02	282.12	307.18	403.94	11	289.45	320.81	421.87	20	279.85	303.87	399.59
03	282.12	307.18	403.94	12	273.20	304.43	400.33	21	285.98	322.25	423.76
04	275.64	300.31	394.91	13	275.64	300.31	394.91	Total	5901.77	6479.60	8520.67
05	273.20	304.43	400.33	14	282.12	307.18	403.94				
06	289.45	320.81	421.87	15	282.12	307.18	403.94				
07	291.32	316.31	415.95	16	275.64	300.31	394.91				
08	276.42	301.31	396.22	17	274.70	304.43	400.33				
09	276.42	301.31	396.22	18	285.98	322.25	423.76				

Trimurty, a name synonymous with trust and excellence. For over three decades, Trimurty has created living and working spaces that are hallmarks of excellence in quality and design. Thoughtfully planned and executed. All Trimurty buildings are created keeping in mind the smallest of your needs. True value is what we commit with a promise of not just satisfying but delighting you with our unparalleled offerings.

Today, the Group has to its credit, the trust of over thousands of satisfied customers. With every project, the group takes further its vision - "To provide residential and commercial spaces to all income groups of the society". The company has come a long way and stretched its wings to farm retreats, hospitality and education.

the TRIMURTY edge

ONGOING PROJECTS



2, 3, 4 BHK, 3 BHK Duplex Premium
Residential Apartments
at Ramnagar, Jagatpura, Jaipur



Ariana is an award winning IGBC Pre Certified Platinum Rated GREEN HOMES Project.

Call : 950 950 0800 To Know More



TRIMURTY'S

ARABELLA

Hello Beautiful Life

Near Desert Inn, Panipech,
Banipark, Jaipur



Call : 935 159 0000 To Know More

the future city
Fully Developed Government Approved Township
Sab ka Future



Plot Sizes - 111.11 sq. yd. to 400 sq. yd.
EASY LOANS AVAILABLE
FROM LEADING FINANCIAL INSTITUTIONS



Call : 950 970 0800 To Know More

PROMOTERS : TRIMURTY COLONIZERS & BUILDERS INDIA PVT. LTD.

This company has been promoted by Mr. Udai Kant Mishra and registered as Trimurty Builders Pvt. Ltd. in the year 1993. The group has its roots firmly established in the real estate business and has played a vital role in the housing sector of Jaipur and Udaipur with more than 3000 satisfied customers.



160 ft. Niwaru Road, Jhotwara, Jaipur



601, Geeta Enclave, G-8, Vinoba Marg, C-Scheme, Jaipur-302001
Tel. 0141 5107100, 2374451 Fax: 0141 2372359
Email: sales@trimurty.com
Visit us at www.trimurty.com

For bookings contact: 99280 10796 / 95095 00800

LEGAL NOTICE : While every reasonable care has been taken in providing this information, the owner or their agents cannot be held responsible for inaccuracies.