



VASCON[®]
Development with Conscience



WINDERMERE
MODERN. CLASSIC.





WINDERMERE
MODERN. CLASSIC.

It's the last word
in luxury,
but we call it
simply
TOWER - I







WINDERMERE
MODERN. CLASSIC.

Elegance
has a new
definition,
but since pictures
speak louder
than words,
here's what
'elegance'
now looks like...!

LAYOUT PLAN

LAYOUT PLAN

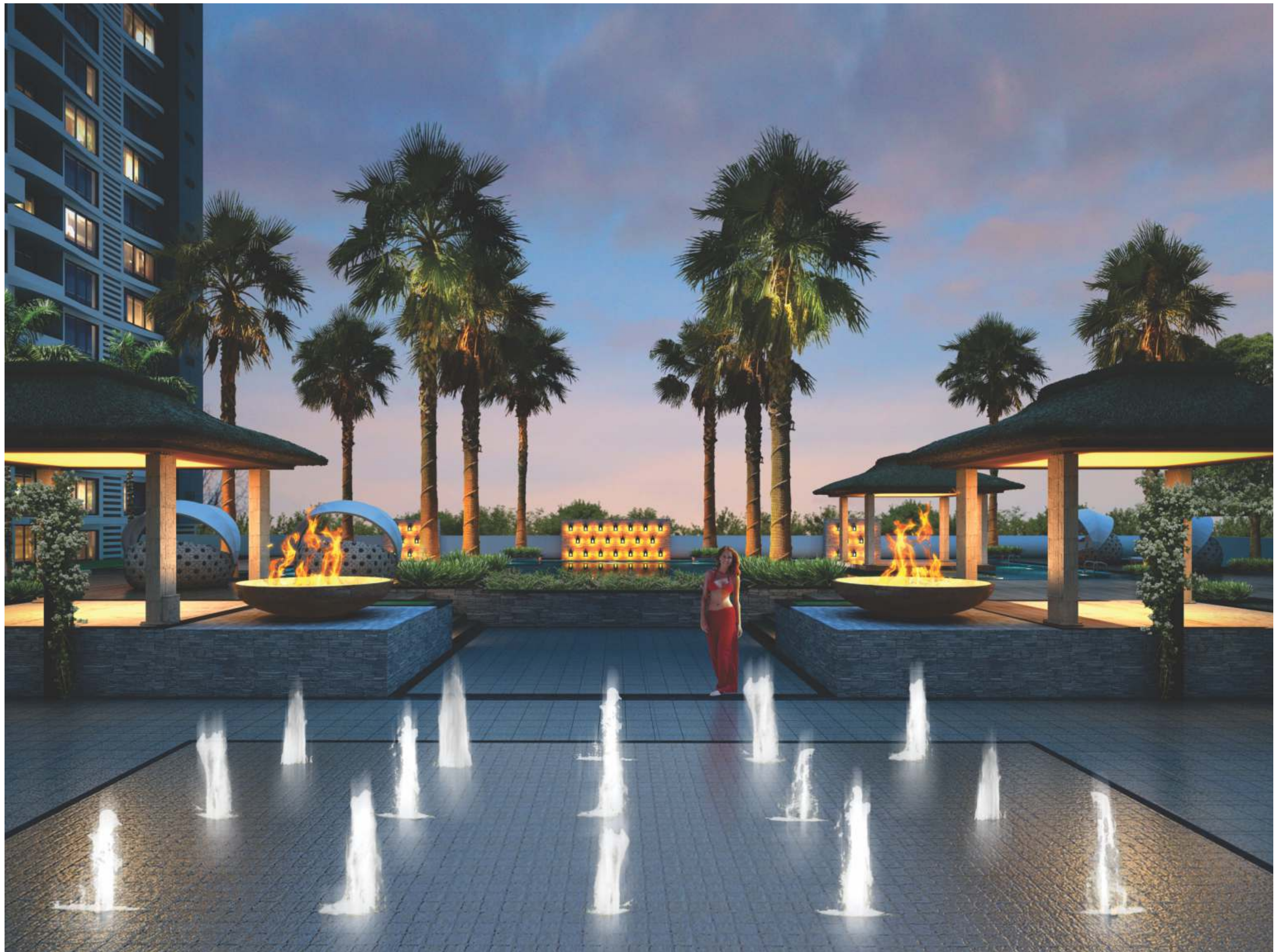


WINDERMERE
MODERN. CLASSIC.



- 1. APPROACH ROAD.
- 2. FEATURE PAVING.
- 3. CLUB (DESIGN TO BE FINALIZED).
- 4. TENNIS COURT.
- 5. PRIVATE TERRACE.
- 6. DROP-OFF TOWER 2.
- 7. SWIMMING POOL PODIUM LEVEL.
- 8. SEATING UNDER FEATURE TREE.
- 9. ENTRY/EXIST PARKING LOT.
- 10. DROP-OFF TOWER 1.
- 11. FEATURE WALL.
- 12. DOUBLE HEIGHT LANDSCAPE COURT.







WINDERMERE
MODERN. CLASSIC.

They say
you cannot have
too much of a good
thing.
Perhaps.
But thank goodness
you can have
two much
of Windermere!
TOWER - II







WINDERMERE
MODERN. CLASSIC.

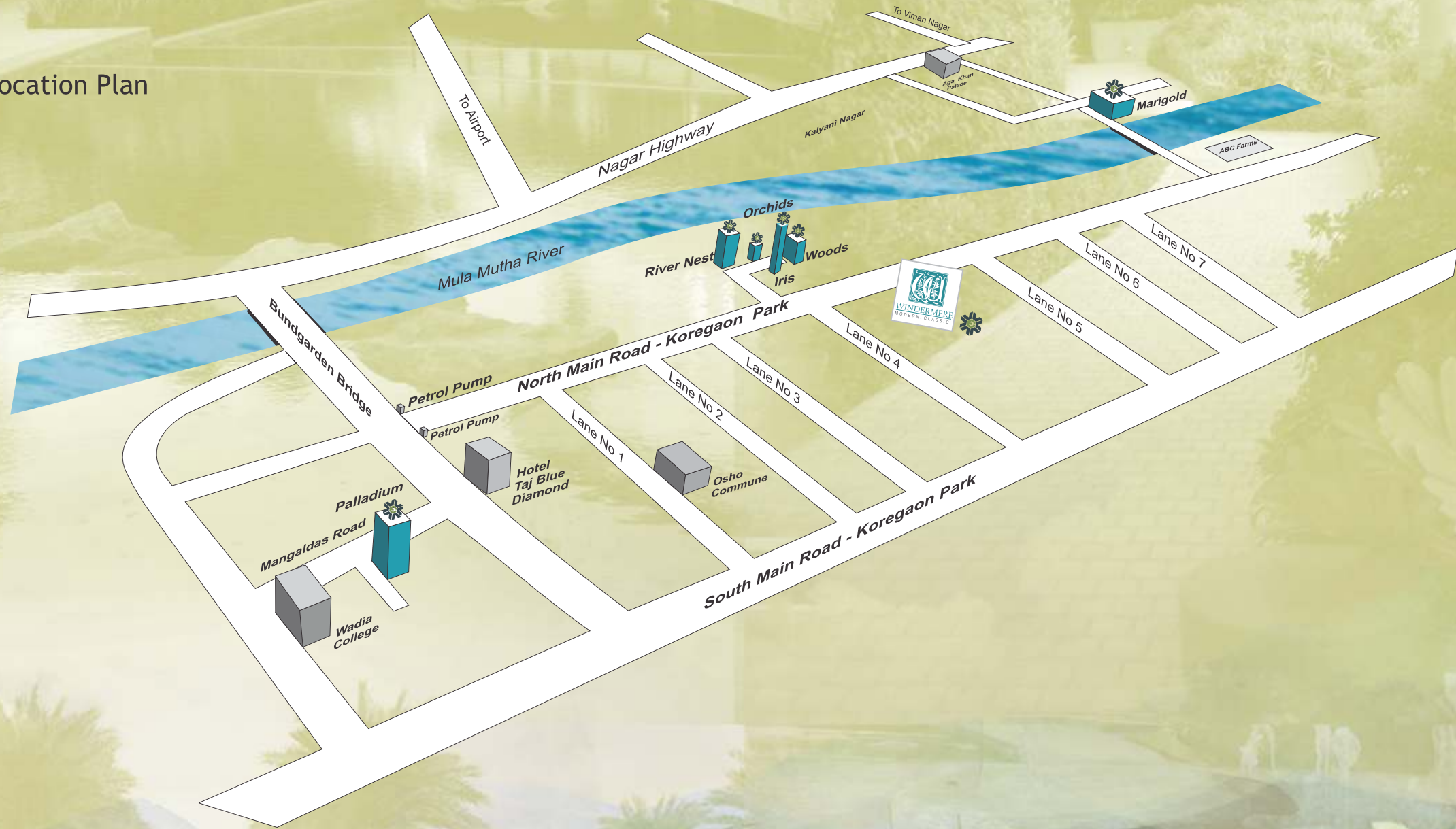
A lifestyle
that makes you
happy.
And our planet
even happier.
That's Windermere
for you!

Designed for five star rated Eco Housing Project & IGBC GREEN HOMES

- Renewable energy via solar heating system
- Heat and ventilation studies at the design level
- Architectural design that ensures good ventilation and the maximum use of natural lighting, thereby providing a healthy environment
- Using energy-efficient light fixtures in common areas & garden lighting. Common areas lighting on renewable energy
- Large areas of landscaping throughout the projects and ensuring that plants are of indigenous and drought-tolerant species
- Use of environment friendly construction materials like fly ash
- Large terrace with ample landscaping
- Efficient irrigation systems and water-efficient fixtures are used for efficient water management
- E-waste collection
- Greater thermal comfort through abundant use of eco-friendly materials
- Water conservation by maximum recycling and reuse while designing water and sewage services
- Organic waste management system is used and the manure generated will be used for landscaping
- Rain water harvesting will be done to increase the ground water table
- Building caters to differently-abled people
- Electrical vehicle charging points will be provided to encourage the use of electrical vehicles and reduce pollution from automobile use



Location Plan



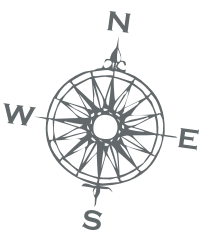
Windermere Eternity Garden:

- * **Garden of reflection**
An extension of the health spa visualized to give an experience of the same in an outdoor setting. The garden is designed with shaded pergolas and seating pavilions. Good green spaces to look at, while enjoying the facilities. Space for yoga, water features, all designed towards bringing a sense of relaxation.
- * **Garden of Expression**
Water fountains, Maze, Sculptures & Play areas all catering to the activities of children, an important space necessary in any settlement for the betterment of children.
- * **Garden of Rejuvenation**
Landscape styled to create an oasis. A feel of being around a water body just adds to the mind's calmness. The sound of water flowing, brings a certain serenity to the atmosphere. The sight of water adds coolness to the eye and also the environment.
- * **Garden of Meditation**
Meditation means constantly working towards the goal of discovering ones own ability to reach a state of serenity. A space designed with a zen setting and landscaped to give a feel of peace. It creates a perfect environment to unwind, relax and contemplate. The idea is to leave all the stresses behind and be in a surrounding which offers total peace of mind to help achieve a sense of calmness.
- * **Garden of Silence**
Considering that the population will also have a decent proportion of senior citizens coming for recreational and relaxing activities, this space has been conceived as their space. Seating benches, stream of water flowing and space for socializing. This space caters to the relaxation of the senior population.
- * **Scented Garden**
This garden is planned with various scented plants to provide a pleasant atmosphere with delightful smell for those who do not have the sense of sight and the visual stimulation of a garden.





TOWER 02 : TYPICAL FLOOR PLAN

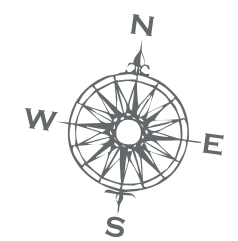


TOWER II





TOWER 02: KEY PLAN



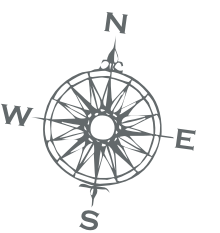
TOWER II

TYPE H : 3 BHK UNIT
Flat Area: 3000 sq.ft.
TYPE H : 3 BHK UNIT (302,402,502,602,902,1002,1205,1402,1502,1602,1702,2002.)





TOWER 02: KEY PLAN



TOWER II

TYPE G : 4 BHK UNIT WITH SERVANTS ROOM

Flat Area: 3800 sq.ft.

TYPE G : 4 BHK UNIT WITH SERVANTS ROOM (303,403,503,603,703,903,1003,1103,1206,1403,1503,1603,1703,1803,2003.)



WINDERMERE
MODERN. CLASSIC.

Site office:

North Main Road,

Koregoan Park,

Pune 411 001

Tel : 32405333

Corporate office:

Phoenix, Bund Garden Road,

Pune 411 001.

Tel.: +91 020-30562100 / 118

Fax: +91 020-26131071

Website: www.vascon.com



VASCON[®]
Development with Conscience

J.V. Partner



RAJESH BUILDERS
Promoters, Developers & Builders