



DAMJI SHAMJI SHAH GROUP
SINCE 1962



LOSE yourself,
to FIND yourself...



1 & 2 BHK | Thane (W)

MAKE YOUR WORLD A LITTLE MORE **COMFORTABLE...**

Internal Features

- Vitrified flooring
- Granite kitchen parallel platform with stainless steel sink
- Powder coated aluminum window with mosquito net
- POP wall finish with OBD
- M. S. grill for windows
- Video door phone
- Branded sanitary ware & plumbing fittings
- Digital tiles in toilet
- Exhaust fan & water purifier in kitchen
- Telephone point provision



MAKE YOUR WORLD A LITTLE MORE **PLEASANT...**

Clubhouse Features

- Indoor Children Play Area
- Gym
- Carrom
- Steam
- Foosball
- Jacuzzi
- Table Tennis
- Library
- Pool
- Banquet Hall

MAKE YOUR WORLD A LITTLE MORE ENTERTAINING...

External Features

- Jogging Track
- Skating
- Lawn Area
- Children Play Area
- Bus Facility



- Box Cricket
- Acupressure Pathway
- Pergola Sitting Area
- Multipurpose Court
- Generator Backup for Common Area

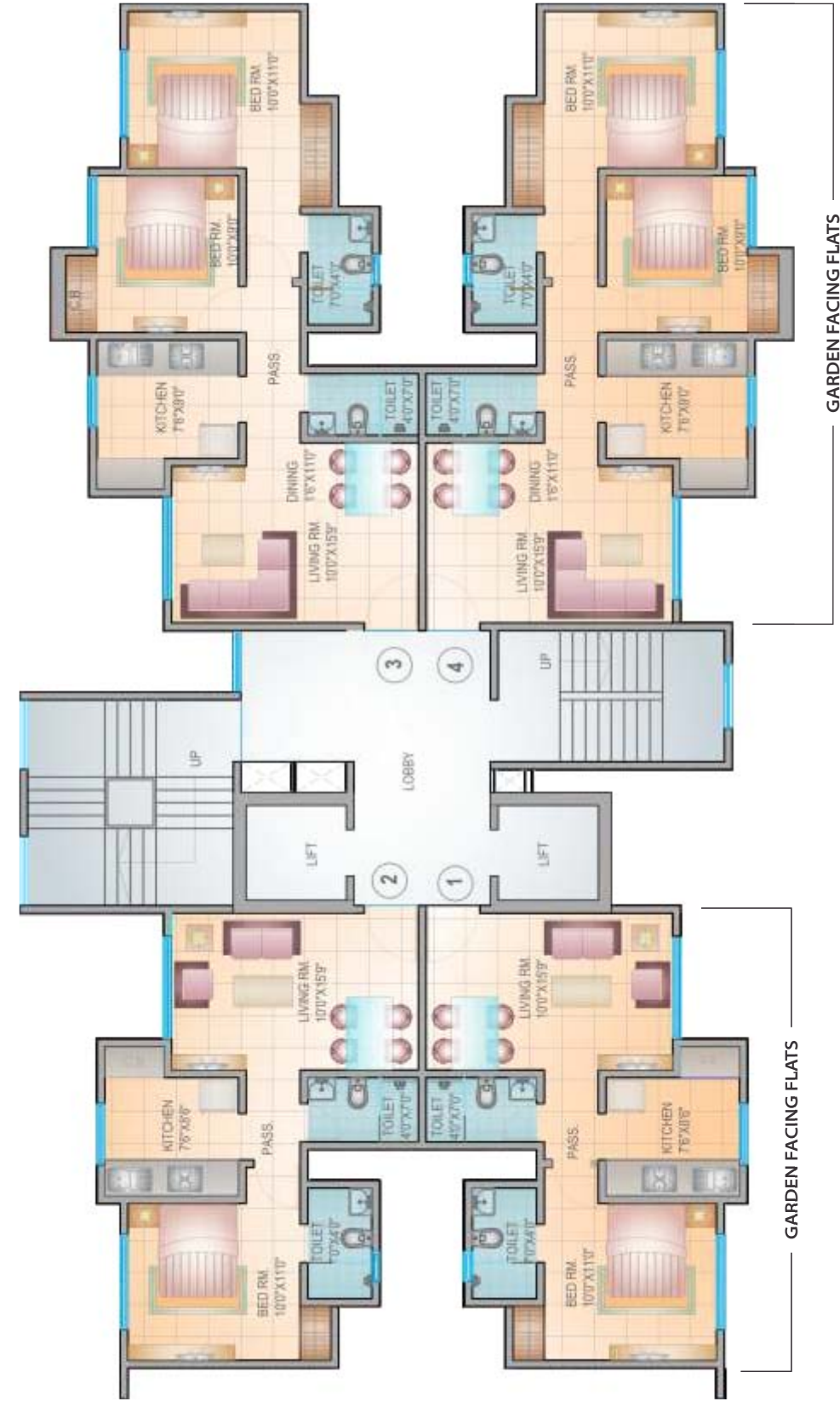
MAKE YOUR WORLD
A LITTLE MORE **STUNNING...**



1 & 2 BHK | Thane (W)



ALCACIA TOWER - TYPICAL FLOOR PLAN



ALMOND TOWER - TYPICAL FLOOR PLAN

Disclaimer - All electric points shown may differ in actual. Furniture and fixtures shown are just for representation purpose only.



DAMJI SHAMJI SHAH GROUP
SINCE 1962

Mahavir Kalpavruksha

Near Kasarvadavali Police Station & HyperCITY, Ghodbunder Road,
Ovala Village, Thane (W). Mob.: **+ 91 93201 99000**
SMS DSS MK TO 58888 | sales@dssgroup.in | www.dssgroup.in

MAHA RERA REGISTRATION NO. P51700009513
<https://maharera.mahaonline.gov.in>

Disclaimer: All the facilities, designs, images and dimension for all projects are subject to approval of respective authorities and the developers reserve the right to change any or all in the interest of continuing improvement and development without prior intimation or obligation. This is not an offer, invitation to offer and/or commitment of any nature. | This project is financed by ICICI Bank Ltd.

VERSION 1.0 DATED - 01/08/2017



SCAN QR CODE TO INSTALL
'DSS GROUP' APP