

a project by: ®



सिद्धि विनायक

1&2 BHK APARTMENTS



Ground Floor Plan

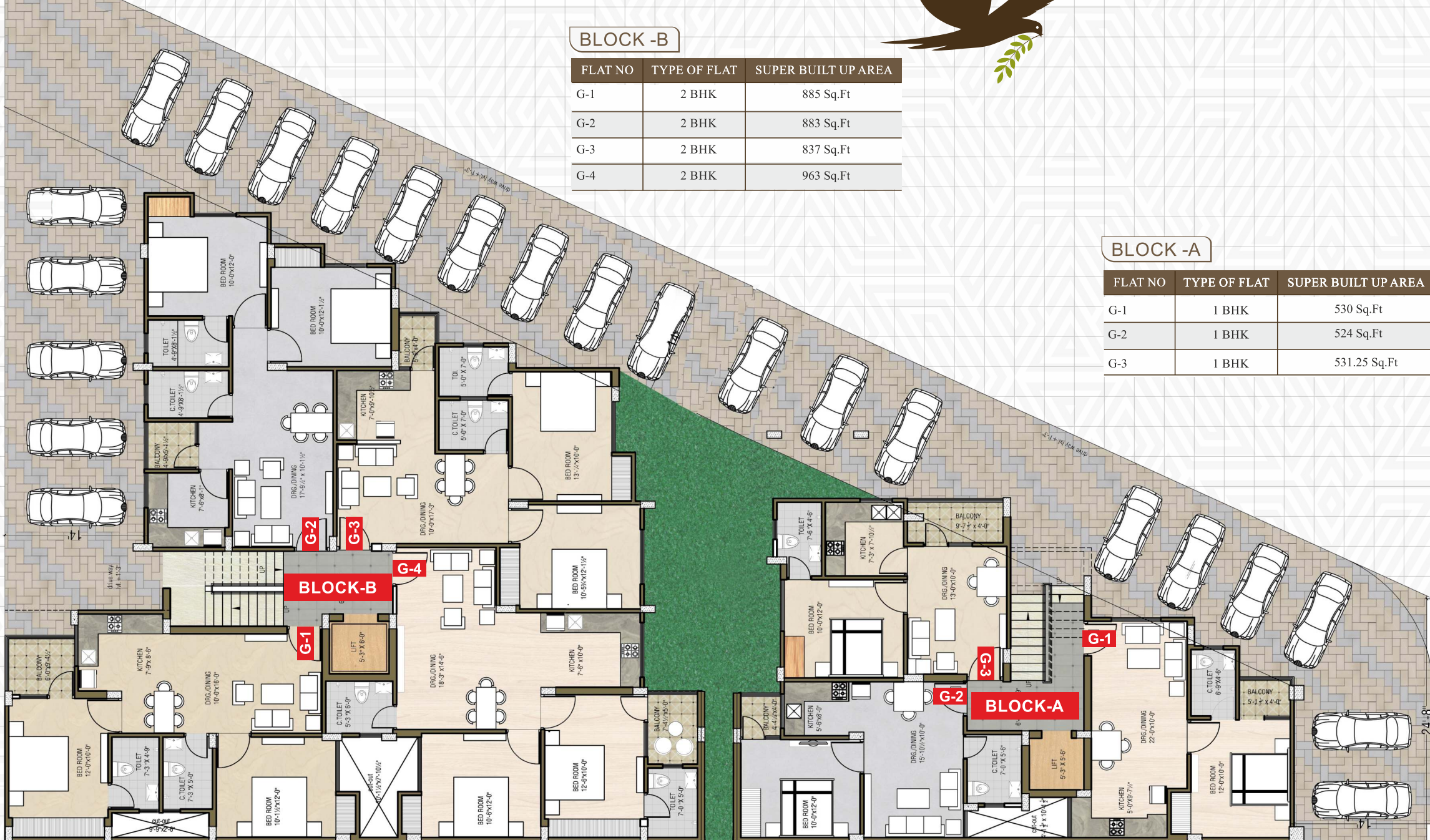


BLOCK - B

FLAT NO	TYPE OF FLAT	SUPER BUILT UP AREA
G-1	2 BHK	885 Sq.Ft
G-2	2 BHK	883 Sq.Ft
G-3	2 BHK	837 Sq.Ft
G-4	2 BHK	963 Sq.Ft

BLOCK - A

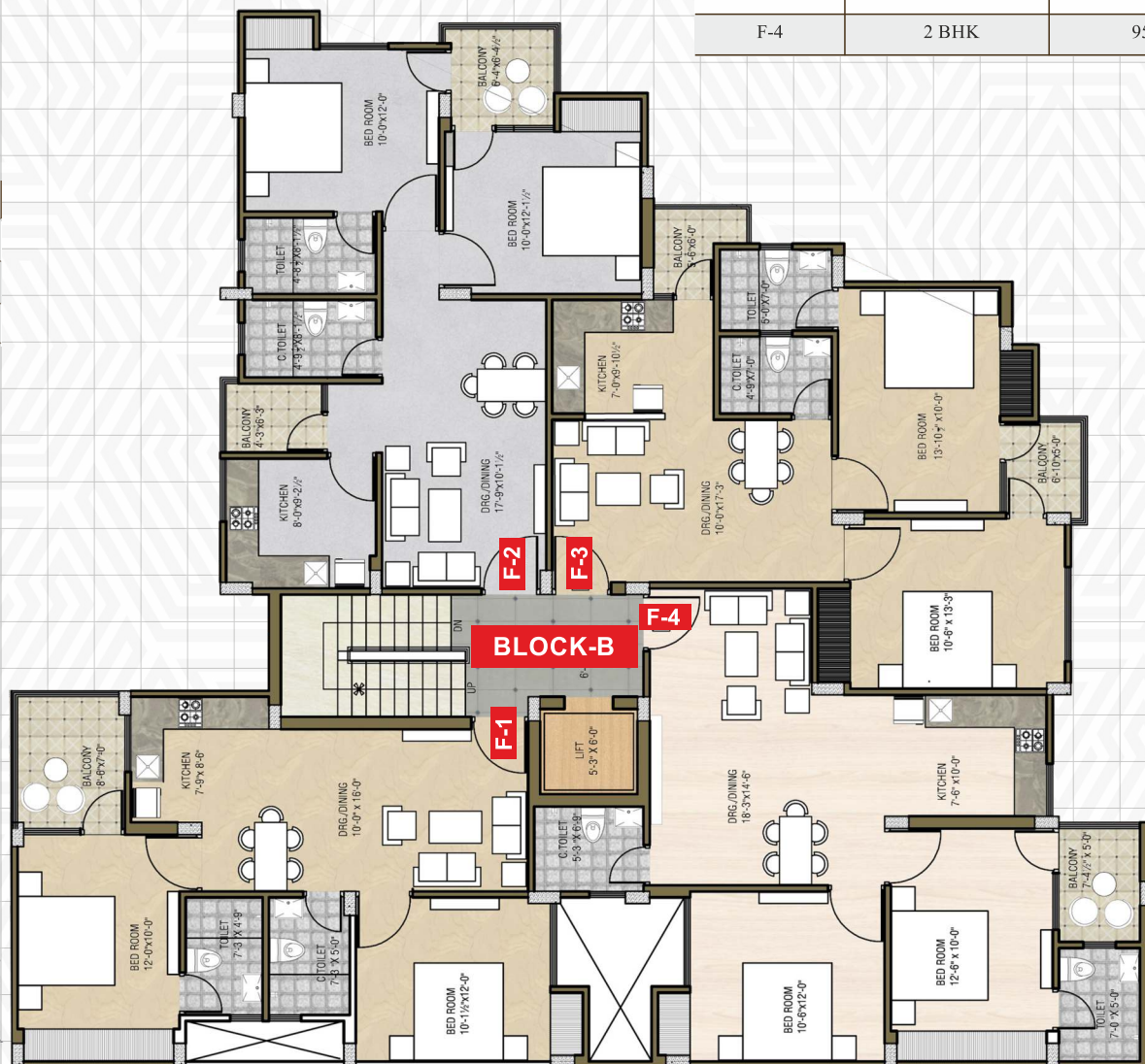
FLAT NO	TYPE OF FLAT	SUPER BUILT UP AREA
G-1	1 BHK	530 Sq.Ft
G-2	1 BHK	524 Sq.Ft
G-3	1 BHK	531.25 Sq.Ft



Typical Floor Plan

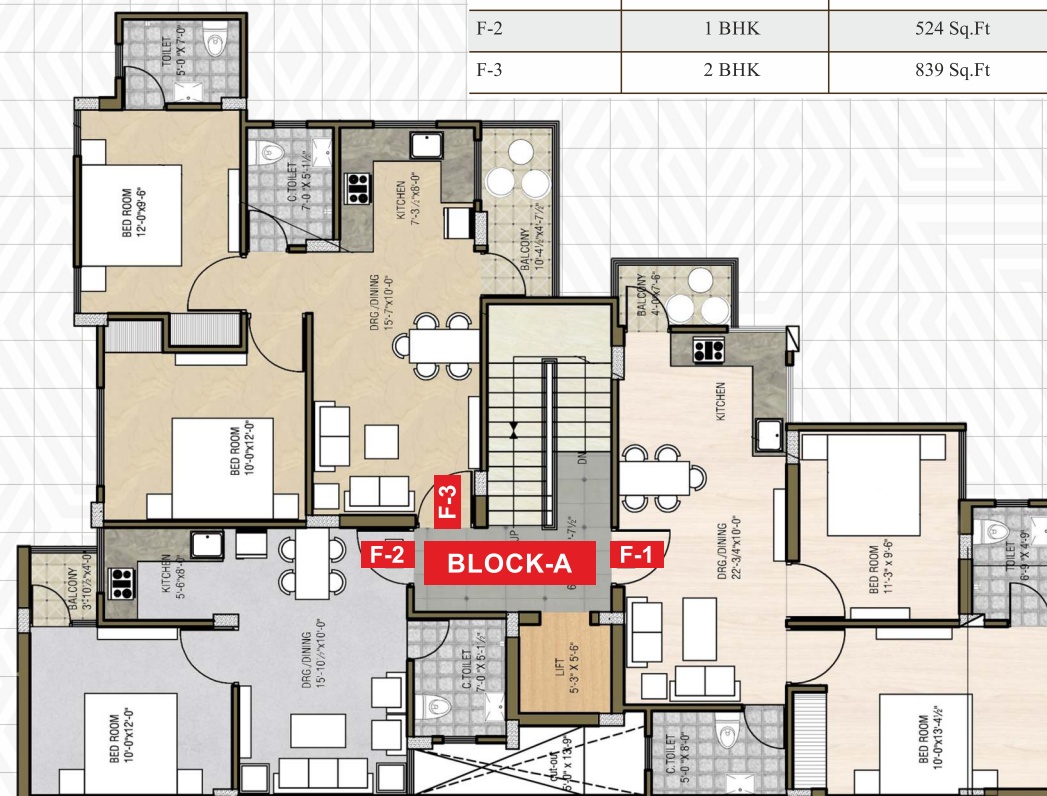
BLOCK - B

FLAT NO	TYPE OF FLAT	SUPER BUILT UP AREA
F-1	2 BHK	905 Sq. Ft.
F-2	2 BHK	949 Sq. Ft.
F-3	2 BHK	910 Sq. Ft.
F-4	2 BHK	954 Sq. Ft.



BLOCK - A

FLAT NO	TYPE OF FLAT	SUPER BUILT UP AREA
F-1	2 BHK	810 Sq. Ft.
F-2	1 BHK	524 Sq. Ft.
F-3	2 BHK	839 Sq. Ft.



सिद्धि विनायक

1&2 BHK APARTMENTS

Highlites

- 1 & 2 BHK Apartments
- Bank Loan Available
- Entry from 100 ft Road
- High Speed Lift

Specifications

- Situated in Fully Integrated Township
- Grand Entrance
- Vastu Friendly Design
- Secured Campus (24 X 7 Security)
- Near to all Essential Facilities In Proximity
- Construction on J.D.A Allotted Plot

Promoters & Developers



APEKSHA HOUSING (P) LTD.

403, Alankar Plaza, Central Spine, Vidyadhar Nagar, Jaipur.
E: info@apekshagroup.com W: www.apekshagroup.com
Tel:0141 2231787

Member of:
**CREDAI
RAJASTHAN**
Formerly Rajasthan Builders & Promoters Association

Site: Manglam City, Sirsi Road, Jaipur



सिद्धि
विनायक

| Map Not To Scale

Disclaimer: All drawings, amenities, facilities, 3d views/elevations are subject to change as per the respective authorities /developers. Images, 3d views and elevations shown above are an artistic conceptualization/impression and do not purpose to replicate the exact products