

— THE — UNMISSABLE OPPORTUNITY

UNMATCHED
LIFESTYLE



PRIME LOCATION,
IN THE HEART OF THANE



AT UNBELIEVABLE
PRICES

THE MOST DESIRABLE PRE-LAUNCH OF 2017

1 bed: ₹71.10 lacs+; 2 bed: ₹105.30 lacs+ (Special pre-launch offer for the first 99 bookings: No stamp duty)
5:65 Easy Pay Home Loan: Pay only 5% and bank pays the next 65%

LODHA CODENAME
GOLDMINE



MOVE UP IN LIFE. MOVE IN HERE.



Set in the heart of Thane, Majiwada, Lodha Codename Goldmine comes in two sculptural towers with their own amenities and splendid views of the Ulhas River. Part of the larger 60 acre+ integrated neighbourhood, which includes Lodha Luxuria Priva, Lodha Luxuria and Lodha Paradise, Lodha Codename Goldmine brings you lavish, air-conditioned 1 and 2 bed residences with superior fitments and finishes, world-class amenities and advanced security measures.



- Fully air-conditioned homes*
- Hill and river views^
- Marble-like Marbltal® flooring for living, dining, passage and bedrooms
- Designer bath fittings from Jaquar, Kohler or Roca\$
- Separate utility area in each apartment
- Two washrooms in each apartment
- 3 hi-speed elevators, including a stretcher elevator
- Grand air-conditioned entrance lobby**
- 24x7, 3-tier security system
- Fibre Optic (FTTH) and Direct to Home TV (DTH) connectivity providing hi-speed internet access^^



Tower 1 (1 BHK)	Tower 2 (2 BHK)
Gym	Gym
Party hall	Party hall
Indoor kids' play area	Indoor kids' play area
Indoor games room	Indoor games room
Outdoor kids' play area	Outdoor play court
Multipurpose play turf	Multipurpose lawn
Walkway	Jogging track
Elders' sit-out	Swimming pool#

THERE'S NOTHING GREATER THAN HAVING EVERYTHING WITHIN A SHORT DRIVE.

Lodha Codename Goldmine is your gateway to a quality lifestyle in a thriving ecosystem with easy access to the best schools, business hubs, social hotspots and hospitals. In other words, it is sheltered from the bustle yet offers easy access to all facets of ready social infrastructure.



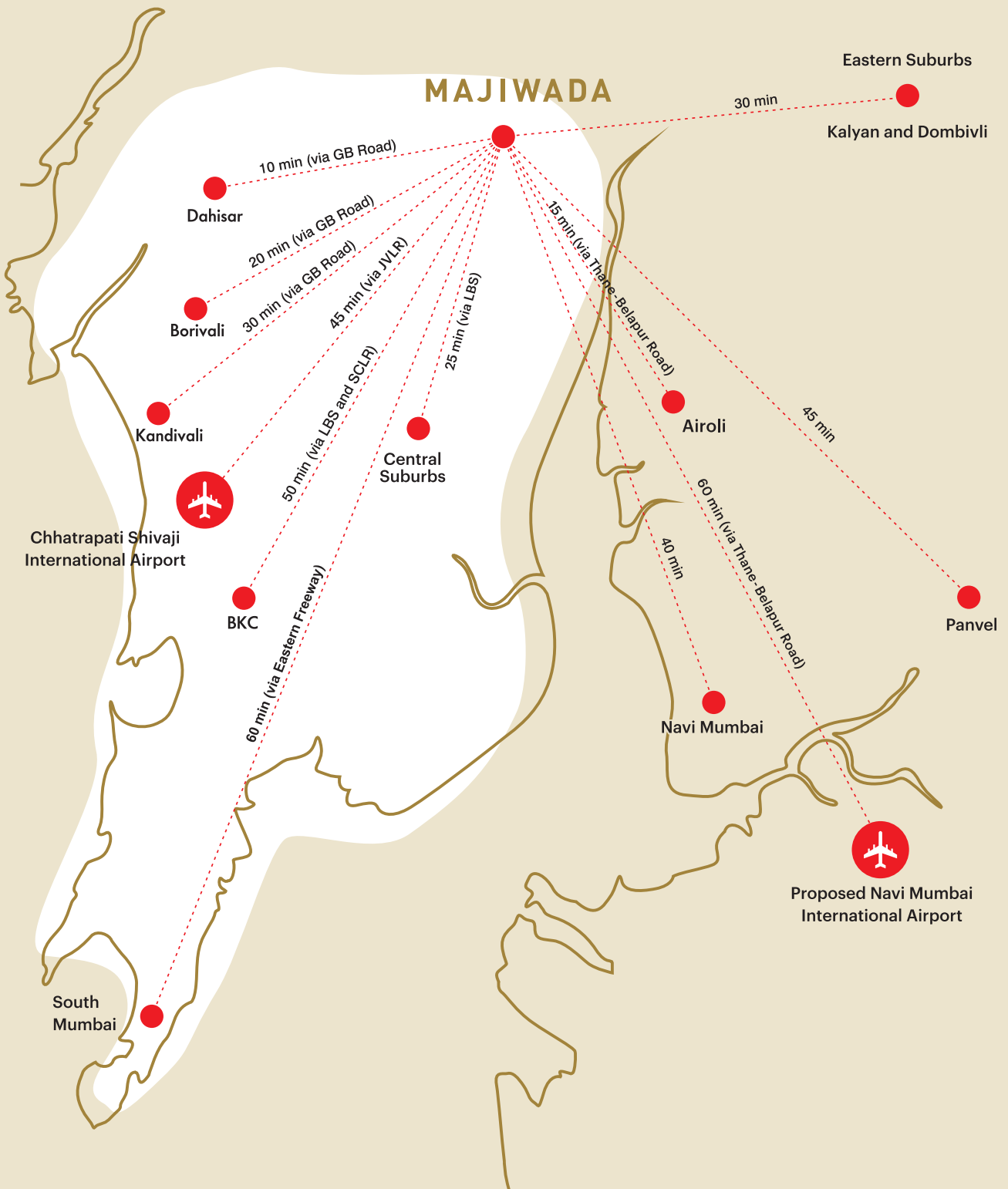
Your world, just around the corner.

- Viviana Mall
- Lodha World School
- Smt. Sulochanadevi Singhanian School
- Jupiter Hospital
- McDonald's

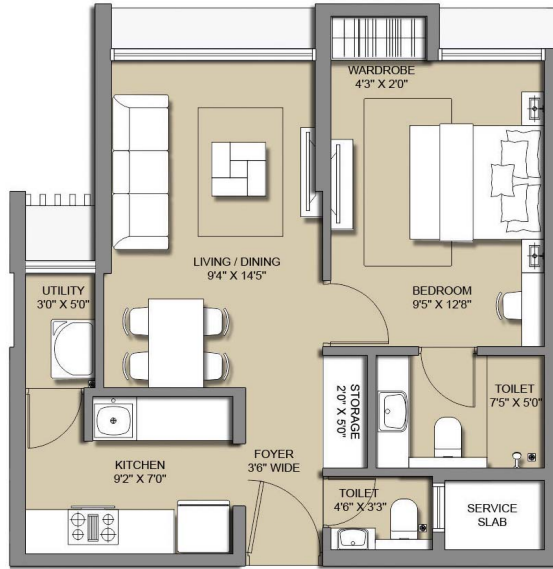
STAY WELL CONNECTED WITH THE WORLD. STAY AHEAD IN LIFE.

Majiwada is the most strategically located area in Thane, offering you unmatched connectivity to all parts of Mumbai Metropolitan Region through the Eastern Express Highway (Central Suburbs), and Ghodbunder Road (Western Suburbs). And with an easy hassle free commute, you can spend less time travelling and more time with your loved ones.

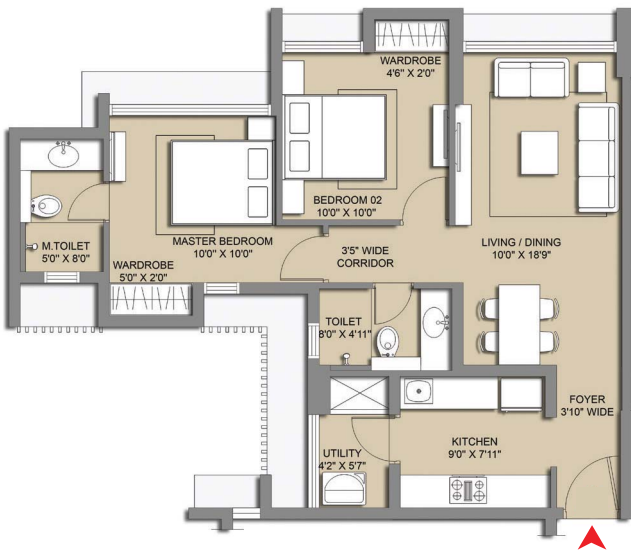
- Eastern Express Highway – 0.5 km
- Ghodbunder Road – 1 km
- LBS Marg – 4.3 km
- Proposed Metro Station – 1 km
- Thane Railway Station – 5.6 km
- Andheri & International Airport – 25 km
- Airoli & Navi Mumbai – 9 km
- Bhiwandi Kalyan – 15 km
- Powai – 15 km
- BKC – 25 km



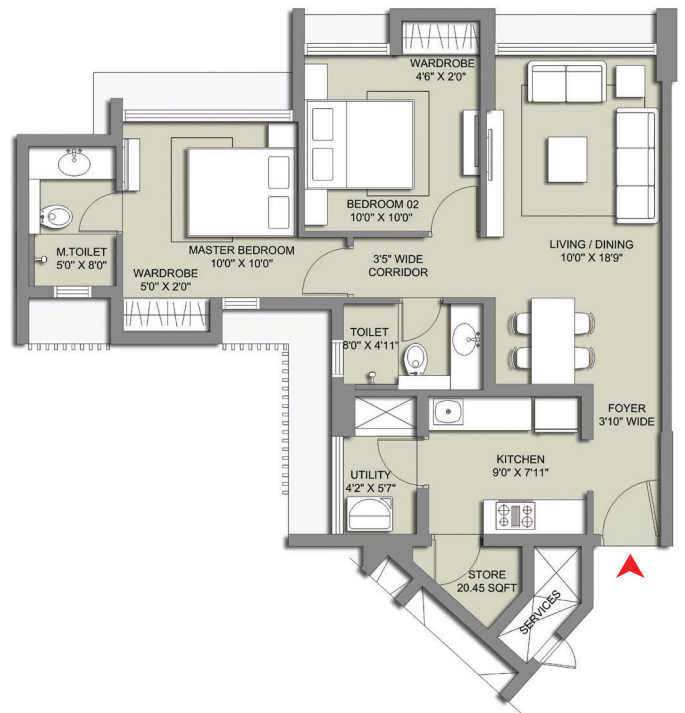
UNIT PLANS



1 bed



2 bed



2 bed with store

LODHA – INDIA'S NO.1 REAL ESTATE DEVELOPER

The benchmark for luxury living in India and now internationally, Lodha Group has redefined high quality living and work spaces across Mumbai, London, Pune and Hyderabad. Not only is Lodha India's largest real estate developer, but it has been recognised as one of India's top 50 most trusted brands and has received numerous accolades. From World One, the world's tallest residential tower to Palava City, the world's largest private development project, the Lodha Group has set new benchmarks in every arena.



Don't miss this opportunity to invest in a goldmine,
call 022 6135 6362, sms GOLDMINE to 56161, or visit our Sales Gallery at
Lodha Luxuria, Near Majiwada Flyover, Off Eastern Express Highway, Thane.