

AAROHI
ELYSIUM
home blessed with happiness

FOR THE BLESSED FEW EARTHLINGS

With Every Break Of Down, Life Shall Rise And Shine Beautiful. The Dewy Face Of The Morning Shall Tickle Your Soul With The Soothing Breeze Of Freshness. Those Hundreds Of Little Rays Of Sun Shall Pour Illuminating Goodness Of Nature In Your Life. And, He Swaying Wind Shall Pamper You With Its Caressing Touch . A Perfect Life Is Often Made With A Perfect Home . A Home - Where Beauty Of Life Is Felt Every Day, Where Good Luck Stays Forever, And Where Happiness Is Woven In Its Soul As A Blessing.

Presenting AAROHI ELYSIUM...

A Dream Adobe. A Place To Call Your Own World. A Home That Defines Good Life. A Residence That's Blessed To Bless The Lives Of The Privileged Few. That's Aarohi Elysium, For You And Loved Ones.

From The House Of Renowned Siddhi Developers, Aarohi Elysium Is A Contemporary Residential Spaces Project Located In The New And Constantly Evolving Posh Neighborhood Of South Bopal.

It Invites You To Experience Ultra Modern Way Of Living With Beautiful 2 & 3 Bhk Homes That Are Wrapped With Myriad Of Feature And Amenities To Fulfill Your Desire Of A Perfect Life.

The Residences At Aarohi Elysium Are Developed Keeping In Mind The Lifestyle And Needs Of Modern Day Families And Young Couples. Therefore, They Had To Come Loaded With Luxury Of Space And Recreational Facilities For All Age Group. Right From Gym For The Fitness Conscious To Dedicated Play Area For The Kids; An Exclusive Club House To Reading Library, There's Everything You And Your Family Need To Enjoy Being At Home.

Crafted With Thoughtful Planning, Design Excellence And Superior Quality, Aarohi Elysium Is Simple Conceptualized To Make The Lives Of Its Inmates Blissful, Forever.

LIVE BLESSED!







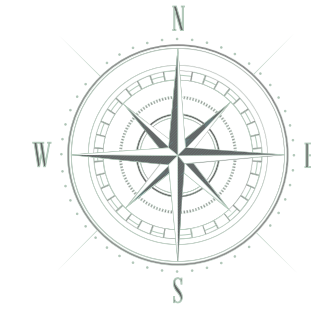
MODEST
LUXURY



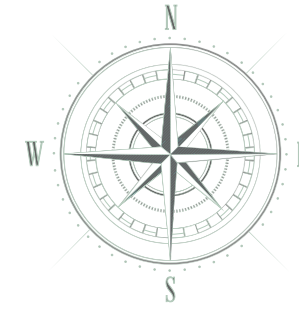




GROUND FLOOR PLAN



60' WIDE MAIN ROAD

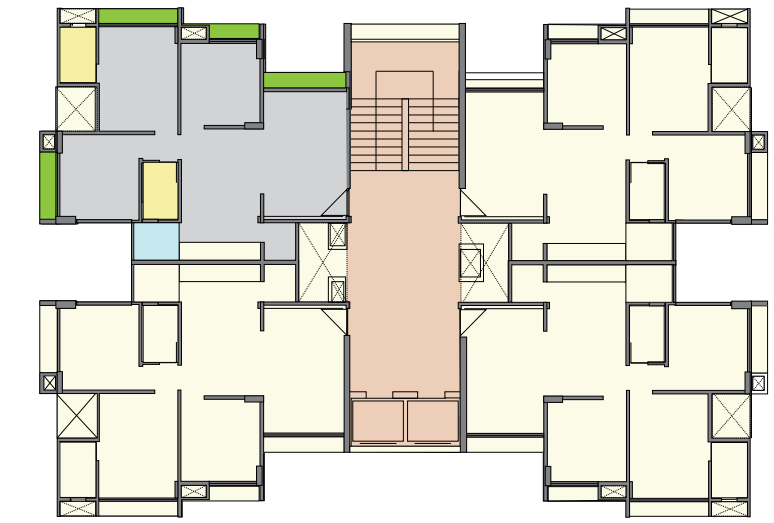


TYPICAL FLOOR PLAN





3 BHK

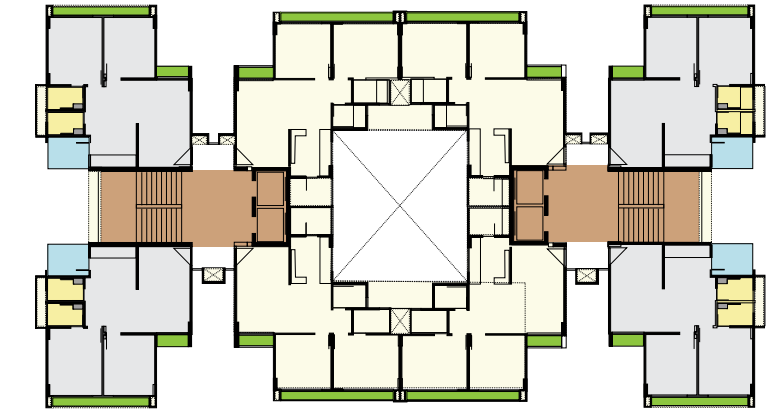


BLOCK - A, B, C, D

Unit Area
 Built Up - 80.00 sq.mtr / 860.86 sq.ft
 Sellable - 133.33 sq.mtr / 1434.67 sq.ft



2 BHK TYPE: 1

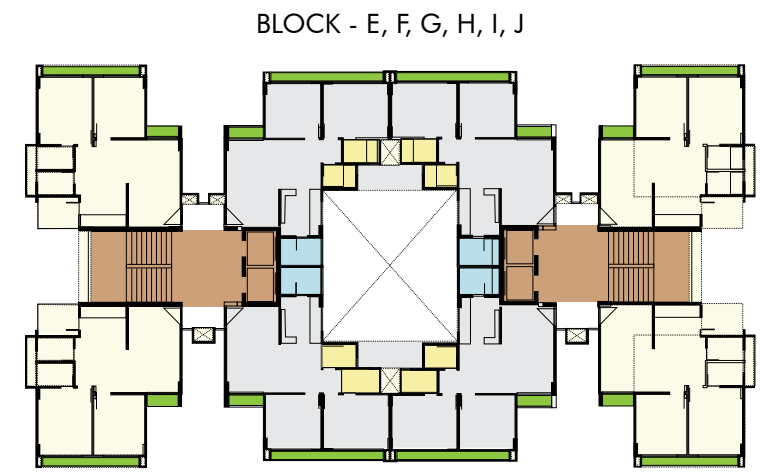


BLOCK - E, F, G, H, I, J

Unit Area
 Built Up - 71.00 sq.mtr / 763.96 sq.ft
 Sellable - 118.33 sq.mtr / 1273.27 sq.ft



2 BHK TYPE: 2



Unit Area
 Built Up - 71.00 sq.mtr / 763.96 sq.ft
 Sellable - 118.33 sq.mtr / 1273.27 sq.ft



PROJECT FEATURES

PANEL OF RENOWNED & EXPERIENCED CONSULTANTS

- Architect
- Structure Design
- Plumbing & Fire Fighting
- Electrical
- Landscape
- Uninterrupted water supply by:
 - Energy Conserving Efficient Composite Water Supply System
 - Tube well of adequate capacity
 - Underground water tank with adequate storage capacity
 - Efficient Fire Safety System
 - Spacious & Decorative Foyer Entrance at Ground Floor
- Automatic Elevators of Branded Company with sufficient capacity
- Water repellent coating on exterior wall for water proofing
- Distemper in all common areas
- 24 hours security
- Decorative lights in common areas
- Generator power backup for essential common amenities
- 1 years maintenance from professional management after sales
- Anti-termite treatment at basement & parking level

BUILDING SPECIFICATIONS

- Earthquake Resistant Safe & Sound RCC Frame Structure as per IS:1893 & 4326
- Standard and attested raw material for all work
- Stone flooring in staircase
- Vitrified/Stone flooring in corridors & Passages
- China mosaic with water proofing treatment on terrace
- Weather Resistant Acrylic paint on exterior walls
- Water repellent coating on exterior walls for water proofing
- Spacious lift foyer
- Two lifts for each tower

HOME
BLESSED
WITH
HAPPINESS

UNIT SPECIFICATIONS

BRICK WORK AND PLASTER

- Brick/AAC Block masonry with shear walls
- Inside-Single coat mala plaster
- External-Double coat plaster/texture/cladding as per architect detail

FLOORING

- Vitrified Flooring
- High quality designer tile dado up to lintel level in kitchen & toilets
- Stones sill in windows
- Granite platform in kitchen
- Kota stone floor in wash area
- Tile dado in wash area
- S.S. & Crown Kitchen sink
- Kota stone shelves in storage area

ELECTRICAL

- 1 Phase electrical Supply
- Concealed type wiring with 'ISI' Fire retardant grade copper wires
- Ample electrical points with modular type electrical accessories
- Premium branded modular switches and accessories
- Air conditioner points in bedroom
- ELCB & MCB of standard make for each area to ensure maximum safety
- Distribution board with MCB & ELCB
- Dedicated conduit for dish TV Wiring/ Broadband net connection

COMMUNICATION SYSTEM

- Infrastructure facilities have been provided to receive various communication links

BATHROOM

- Marble/Porcelain/Vitrified tiles in bath room wall dado
- Ceramic cartridge bath fitting of standard company

JOINERY

- Decorative main door with teakwood frame and Standard safety lock
- Internal doors-Veneered finish pine flush door
- Superior quality C.P. or S.S. finish hardware fittings
- Standard aluminum windows

PLUMBING & DRAINAGE

- UPVC & CPVC pipes for hot & cold water supply
- S.W.R. type drainage work
- Superior quality branded sanitary ware

PAINTS

- Double coat cement putty on all walls
- Oil paints on all grills/railing

WATER PROOFING

- Water proofing in all toilets & terrace area to prevent seepage
- Water repellent chemical coating treatment on all external walls

Note :

We do not allow the following

- * Any charges in exterior elevation
- * Any grill or screening outside unit
- * Any open wiring / cabling outside building for any services



AAROHI
ELYSIUM
home blessed with happiness

| | | | | | |
|-----------------------------------|------------|-----------------------------|-----------------|--------------------|---|
| 3 LUSH GREEN CELEBRATION LAWNS | 2 BANQUETS | THE BEST OF THE THEME DECOR | GOURMET CUISINE | 45 LUXURIOUS ROOMS | ON VENUE HOSPITALITY & MANAGEMNET SUPPORT |
| BOOK YOUR DATE: 90990 49168 / 177 | | | | | |

AN ULTIMATE BESPOKE WEDDING DESTINATION

Club Location : Starz Club, Aarohi Greens, Near Adi Finechem, Sanand Kadi Road, Chekhla, Ahmedabad.
 Corporate Office : Elanza Crest, B-003, Ground Floor, Nr. HOF Living, Besides Sigma Corporates, Sindhu Bhavan Road, Off. S.G. Highway, Ahmedabad
 Contact : +91 079 40009601 / 51 | www.starzclub.in | www.facebook.com/starzclub



maple tree GARDEN HOMES
 3 & 4 BHK VERTICAL BUNGALOWS
 JV with Ganesh Housing Limited
 Near Surdhara circle, Thaltej

maple TRADE CENTRE
 OPPORTUNITIES MAXIMIZED
 JV with Ganesh Housing Limited
 Near Surdhara circle, Thaltej

Aarohi Verve
 Showrooms & Offices
 S.P. Ring Road, Ambali

Aarohi AGHA
 3BHK LUXURIOUS SKYLINE LIVING
 S.G.Road, Bodakdev

Aarohi Crest
 3BHK HIGH-RISE APARTMENTS
 South Bopal

Aarohi प्रतिष्ठा
 2 BHK Apartments, South Bopal



AAROHI ELYSIUM

home blessed with happiness

- Located in the fastest developing Posh & Prime area of Ahmedabad
- Proximity to AUDA's 200 Ft. Ring Road of South Bopal
- Reputed schools, colleges and hospitals are located in the nearby vicinity
- Well connected to all day to day facilities and amenities
- Close proximity to famous Malls and Multiplexes

Corporate Office: Elanza Crest, B-003, Ground Floor, B/H Hof Living, Besides Sigma Corporates, Sindhu Bhavan Road, Off S.G.Highway, Ahmedabad - 54

Site Address: Aarohi Elysium, Near Safal Parisar- 1, Gala Gymkhana Road, South Bopal, Ahmedabad - 58

Architect
PLACEKINESIS

Structural Consultants
BHOOMI CONSULTANTS

Legal
SHARAD N. Darji

Phone: 079-40009601/51
Web: www.siddhidevelopers.com
Email: info@siddhidevelopers.com