







PARIS  
FOOTBALL



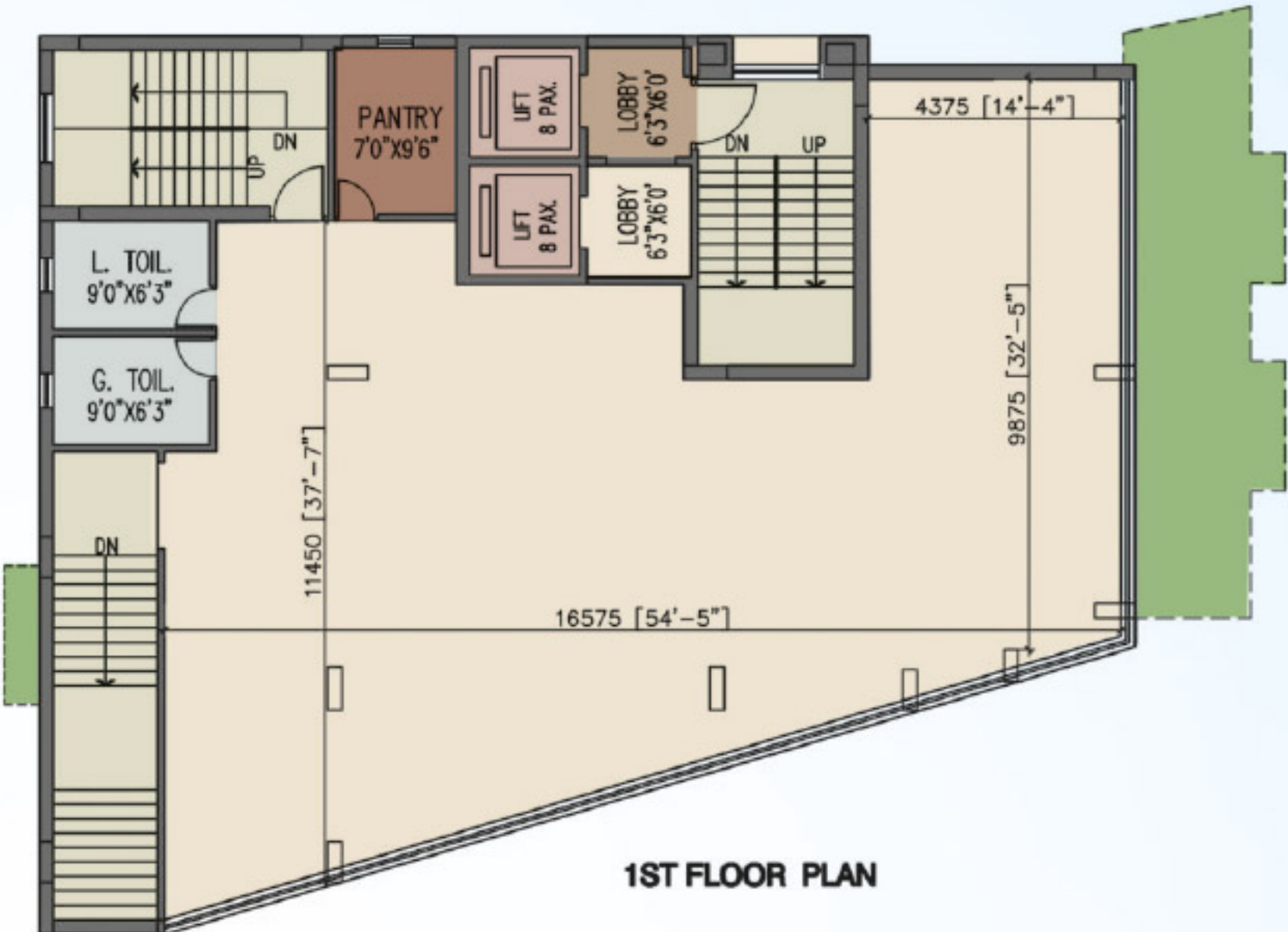
# SPECIFICATIONS

<b>Electrical</b>	<p>Fire resistant wires with high end switches of Crabtree or equivalent</p> <p>Quality earthing for all electro mechanical gadgets</p> <p>PVC Conduit pipe with copper wiring, MCB'S ELC'Bs</p> <p>Sufficient power back up*</p>
<b>Lifts</b>	High speed automatic lifts of reputed make OTIS / SCHINDLER / MITSUBISHI or equivalent make.
<b>Entrance Lobby</b>	Well decorated A.C. lobby with entrance foyer;
<b>Hardware</b>	All locks and hardware of reputed make.
<b>Landscaping</b>	<p>Drive way VDF Cement flooring on RCC bed</p> <p>Lighting as required</p> <p>Softscape and Hardscape as per landscape design</p>
<b>Structural</b>	<p>RCC Frame with cast " in situ "Pile with Earth Quake Resistant structure</p> <p>Anti Termite Treatment during various stages of construction</p> <p>Thermal insulation for the roof</p>
<b>Floors</b>	Combination of imported Italian marble with Spanish tiles, for seamless joints, better finish, uniform pigmentation.
<b>Walls</b>	<p>Cement Putty Interiors no cracks no crevices</p> <p>External 10" brick wall including plaster, paint / stone finish</p>
<b>Doors</b>	Teak wood finished panel doors / designer doors with extra height for ornate impression.
<b>Kitchen</b>	<p>Kitchen with granite top and stainless steel sink</p> <p>Anti-skid tiles</p> <p>Garbage Crushers</p> <p>Separate KMC water line for drinking water</p>
<b>Toilets</b>	<p>Top of the line fittings of Kohler / Grohe / Jaguar /Roca or equivalent make</p> <p>Anti skid tiles on the floor</p>
<b>Windows</b>	<p>UPVC Fenesta windows of extra height, instead of aluminum windows.</p> <p>UPVC ( unplasticised poly vinyl chloride ), reinforced with steel</p>
<b>Typical Floor Lobby</b>	<p>Ceiling : P.O.P. finish</p> <p>Lift fascia : Imported / Vitrified tiles</p> <p>Walls : Vitrified / Paint combination</p>
<b>Security</b>	<p>Video Door Phone with Camera*</p> <p>24 x 7 Security surveillance</p>
<b>Extra Features</b>	VRV / VRF AIRCONDITIONING IN ALL FLATS, A.C. Lounge with Gym and yoga area on the 12th floor overlooking the sky line, connected to the roof. Lush green Roof top









**1ST FLOOR PLAN**





**TYPICAL FLOOR PLAN  
(2ND TO 10TH FLOOR)**

**2ND TO 10TH  
3219 SQ. FT SBU.**

:





12TH FLOOR PLAN





**SITE ADDRESS : 44. HAZRA ROAD KOLKATA - 700 026**

