













## One-Bedroom Suite



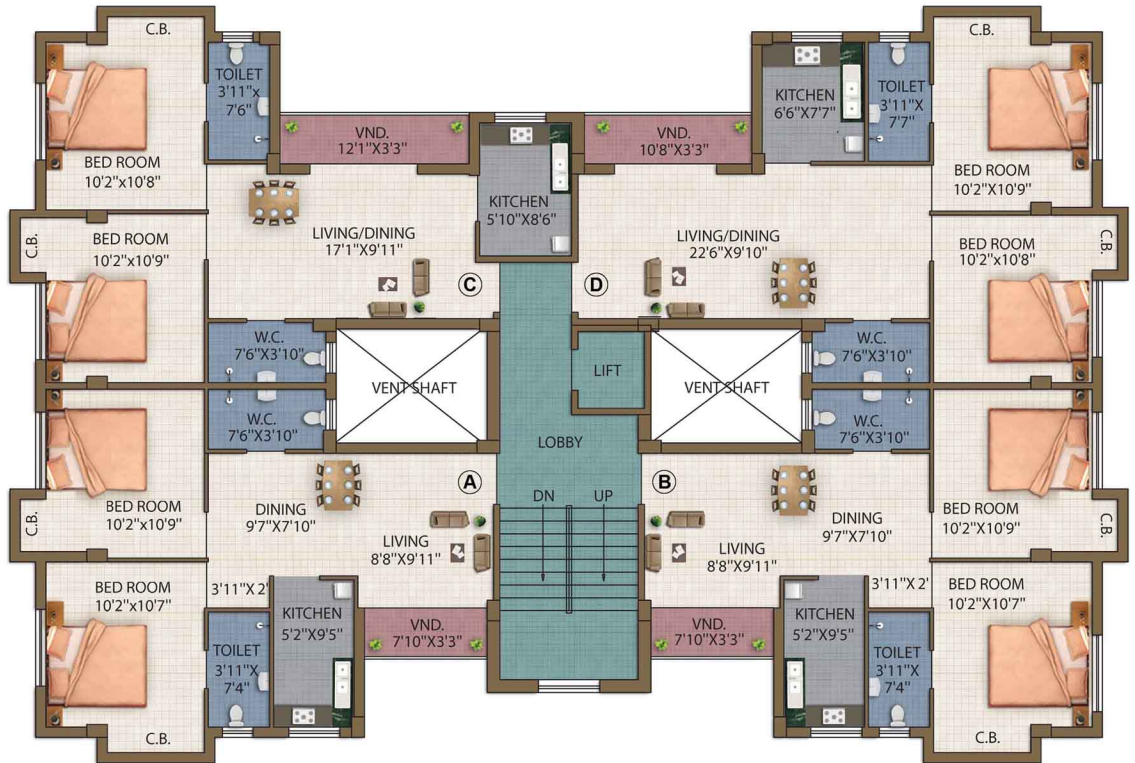
Room dimensions and layout vary by suite and community. Contact a Sunrise community near you for more information.



## Block A

### TYPICAL 1ST TO 4TH FLOOR PLAN

Flat No	SBU Area (SQ.FT.)
A	832
B	832
C	863
D	927







# SPECIFICATIONS

**Structure :** RCC-framed structure with anti termite treatment in foundation. Cements to be used: **Ambuja, Lafarge, OCL, Ultratech, Birla, ACC, Ramco**®.

**Elevation :** Modern elevation, conforming to contemporary designs.

**External Finish :** Paint by certified **Nerolac/ Berger** Applicator®, and other effects as applicable.

**Lobby :** Beautifully decorated & painted lobby.

**Doors & Hardware :** Quality wooden frames with solid core flush doors. Door handles of **Godrej**®. Main door with premium stainless steel handle and eye-hole. Main door lock by **Godrej**®.

**Internal Finish :** Plaster of Paris.

**Windows :** Colour anodized / Powder coated Aluminum sliding windows with clear glass (using high quality aluminum) and window sills. Large Aluminum Windows in Living Room Balcony.

**Flooring :** Vitrified tiles in bedrooms/Living/Dining Room. Marble & Granite Counter in Kitchen. Premium Ceramic tiles in Toilets.

**Kitchen Counter :** Granite slab with stainless steel sink. Wall tiles up to 2 (two) feet height above counter.

**Toilet :** Hot and Cold water line provisions with **CPVC**® pipes. CP fittings of **Jaquar/Kohler**®. Dado of Ceramic tiles up to door height. Sanitaryware with EWC with ceramic cistern and basin of **Kohler/Parryware**®. Waste Pipes of **Supremel Skipper**®.

**Elevators :** Passenger lifts of **Kone**®.

**Electrical :**

a) Concealed **Polycab/ RR Kabel**® copper wiring with modular switches of **Anchor/Roma/Schneider Electric**®.

b) TV/Telephone points in master bedroom and living room.

c) Two Light Points, one Fan Point, one 5A point in all bedrooms.

d) One 15A Geyser point in All Toilets.

e) One 15A & one 5A points, 5A refrigerator point and exhaust fan points in kitchen.

f) One AC point in master Bedroom.

g) Modern MCBs and Changeovers of **Havells/ HPL**®

# Ground Floor Plan





C.B.

BALCONY  
9'-9" x 3'-3"

BED ROOM  
10'-8" x 11'-2"

BED ROOM  
11'-4" x 11'-2"

LIVING  
9'-9" x 13'-0"

TOILET  
8'-2" x 3'-11"

KITCHEN  
8'-2" x 5'-10"

DINING  
14'-9" x 10'-1"

A

TOILET  
3'-11" x 10'-2"

BED ROOM  
12'-7" x 10'-2"

C.B.

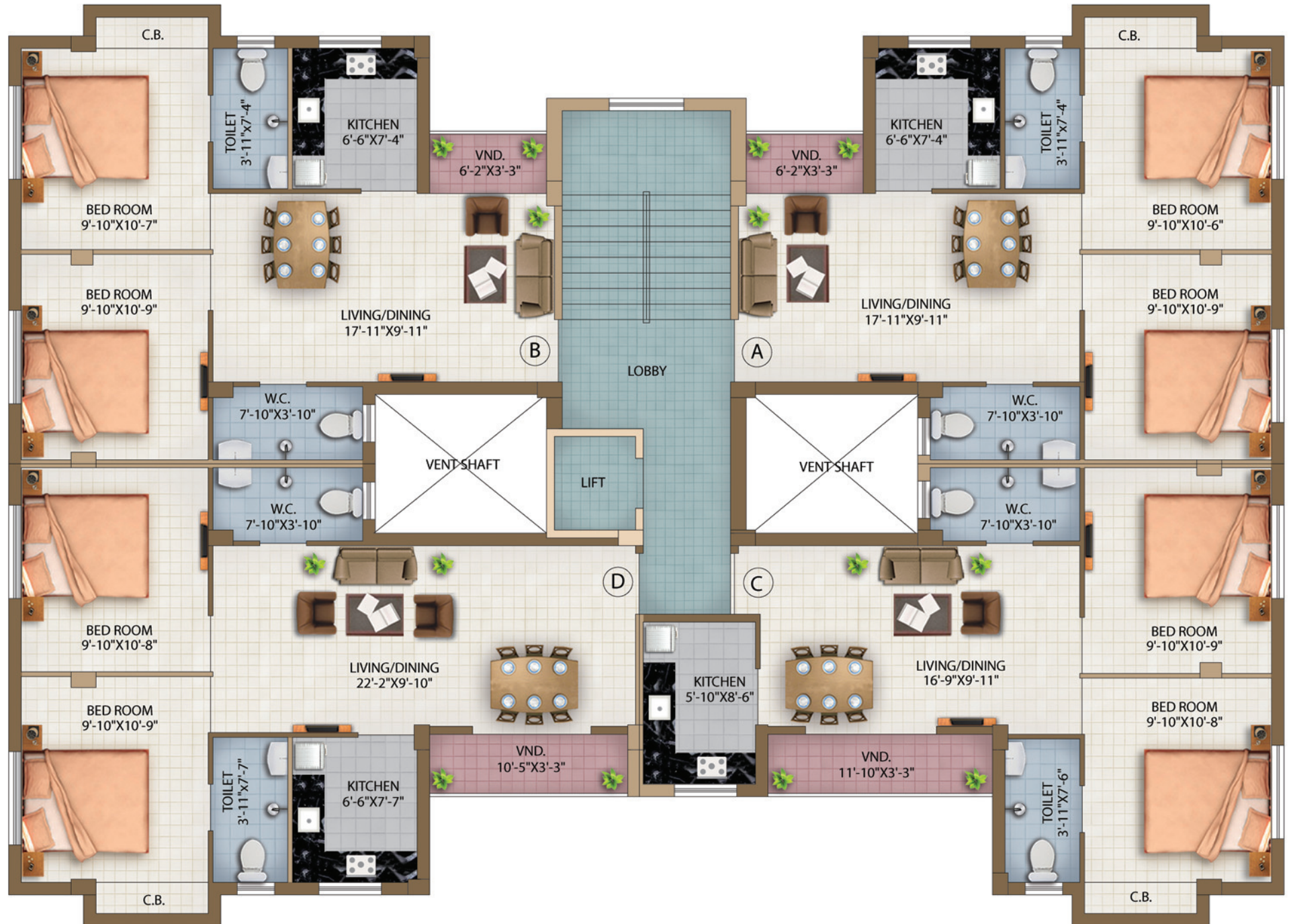




## Block C

### TYPICAL 1ST TO 4TH FLOOR PLAN

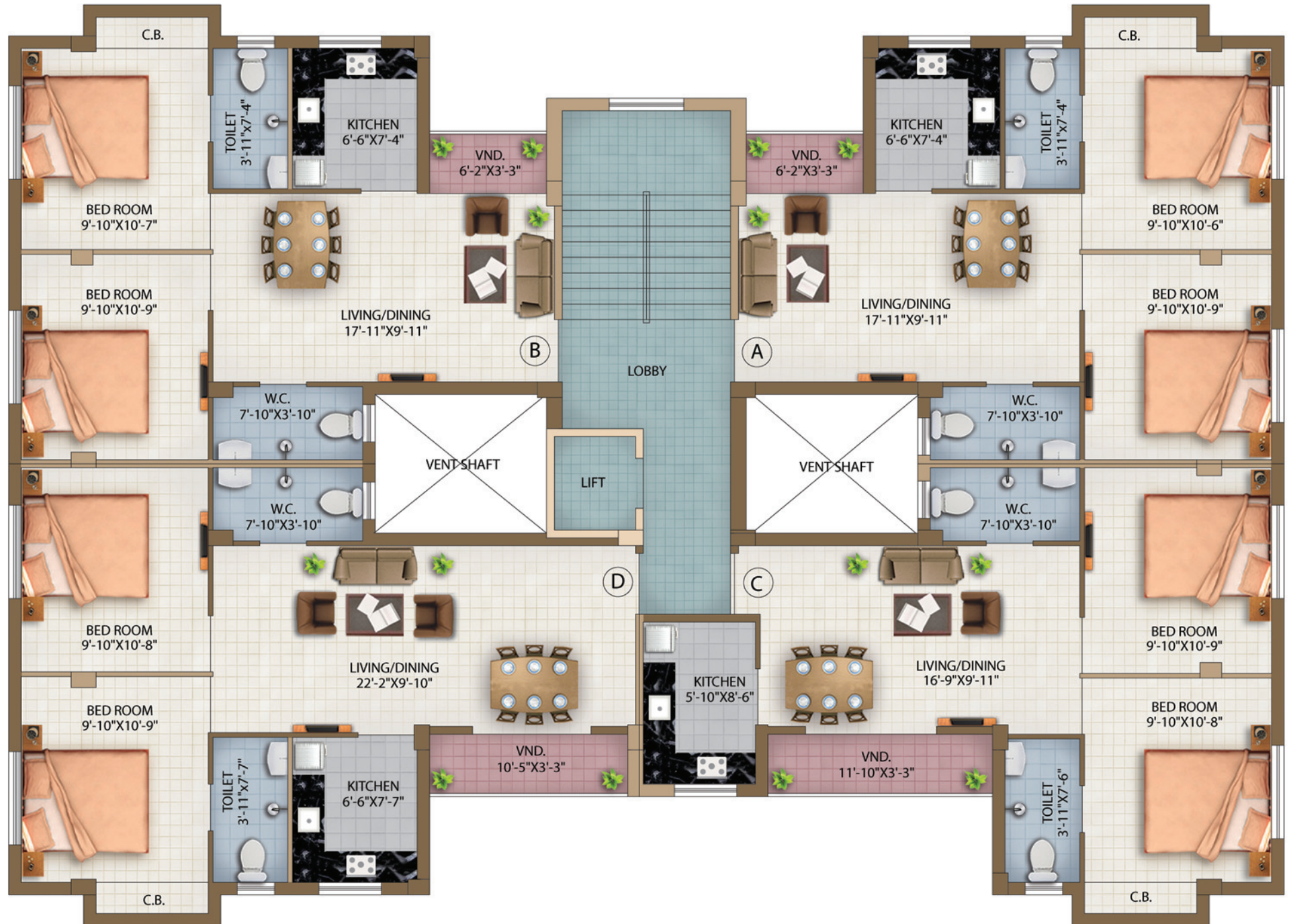
Flat No	SBU Area (SQ.FT.)
A	818
B	818
C	838
D	900



## Block C

### TYPICAL 1ST TO 4TH FLOOR PLAN

Flat No	SBU Area (SQ.FT.)
A	818
B	818
C	838
D	900





## Block B

### TYPICAL 1ST TO 4TH FLOOR PLAN

Flat No	SBU Area (SQ.FT.)
A	1245
B	1237
C	945



# Project Location

