



2, 3, 4 BHK and Duplex  
Ultra Luxury Apartments

*Premium living spaces  
to build enduring bonds.*



Note: This brochure is purely a conceptual presentation and not a legal offering. The promoters reserve the right to make changes in elevation, specifications and plans as deemed fit.

rebellious.com



**MAHAVEER**<sup>®</sup>  
Finest Apartments | Honest Practices  
An ISO 9001 : 2008 Company

**CORPORATE ADDRESS:**  
**REDDY STRUCTURES PVT LTD**  
NO.133/1, THE RESIDENCY, 2ND FLOOR  
RESIDENCY ROAD, BANGALORE - 560 025.  
**PH: 080 - 49196400**  
**Site Address:**  
Kundalahalli Gate Jn., Varthur Main Road, Near Marathahalli, Bangalore (East).





*The link in your relationships.*



**2, 3, 4 BHK and Duplex  
Ultra Luxury Apartments**

The innate essence of Maple lies in its endurance. Celebrating the power of enduring relationships we bring to you cosy sanctums with Mahaveer Maple, a premium project under Platinum Homes. Here's where you will experience the true strength of a lasting rapport with your loved ones. Here's where you can play a part in those wonderfully nostalgic stories that can be shared with your grandchildren many years down the line. Here's where you relive the charming moments that lay forgotten. Here's where you shall traverse the annals of joy that can blow your mind away. And finally, Mahaveer Maple is the space where you live a life of togetherness.





2, 3, 4 BHK and Duplex  
Ultra Luxury Apartments

*Giving relationships space to blossom.  
Go ahead and explore how!*







## *Welcoming relationships.*



Usher every moment of joy in living rooms that are the perfect setting for relationships lasting a lifetime. Step into this space that spells the inception of bonds and the continuity of ties. Be it a fight over the remote to choose between a soap opera and a music channel or bonding to cheer during a cricket match, the living room has space for both. Come, embrace a lifestyle that exudes warmth.





## *Fun-filled relationships.*

Discover the right spots for you to bask in the warmth of a fulfilling bond. Be it the gym where you can compete with your partner to cut flab, the pool where you can beat your friends at the butterfly stroke, or the lawn where you can share a health tip or two, relationships go out of doors and beyond the boundaries of walls.

- Club House
  - Magnificent Swimming pool & toddler pool with Lawn and Deck Area
  - Waiting lounge
  - Admin Office
  - 2 Snooker pool tables
  - Gymnasium, Steam, Sauna, Jacuzzi with changing room
  - Indoor games Room
  - Multipurpose hall
  - AC Guest Rooms
- Children's Play Area
- Library (Provision)
- Table Tennis
- Round the clock Security with Intercom
- Generator Backup
- Landscaped Garden
- Rain water recycling
- Rain water harvesting
- Solar hot water system







The images shown are only for representation and not for actual offer

### *Intimate relationships.*



A world of intimacy nestled within your house is just what you need after the everyday clamour. Shut out the bustling world to enter a new zone where you can discover the bliss in privacy. This is the space that brings you closer and spells a promise of a relationship. This is where you can snuggle and enjoy sound sleep within the cosy confines of walls that whisper sweet lullabies of the night. This is where the daybreak shall greet you with the new hope of discovering fresh ties. Indeed this is the breeding ground of long lasting linkages.



## Valued relationships.

Little things add value to a relationship. Be it the time spent at the kitchen discussing recipes with your mother-in-law or losing an arm wrestling match with your toddler, it is such instances that cement the bond of love. At Mahaveer Maple, you will discover several details which add that value to your living experience.



## Specifications

- RCC framed structure
- Solid Concrete block masonry
- Elegant entrance-lobbies in granite/Marble

### PLASTERING

- External Water Proof sponge finish and internal Smooth Plastering

### FLOORING

- Vitrified tile flooring in Hall, Bedrooms & Dining
- Wooden flooring in Master Bedroom
- Ceramic tile flooring for other areas
- Marble/Granite flooring in the lift lobby & corridor

### PAINTING

- Interior Acrylic Emulsion paint with roller finish
- Enamel Paint for internal doors
- Enamel paint for MS railings
- Exterior Weather Proof Exterior Paint

### KITCHEN

- 2' height wall tiles above the Cooking Granite Platform and Stainless Steel Sink.

### WINDOWS

- UPVC Windows with Glass panels

### DOORS

- Main Door - Teak wood Frame & Molded Doors with thickness of 40mm
- Other Doors - Sal wood Frames Molded with thickness of 32mm & Enamel Paint

### WIRING

- Concealed Copper Wiring for lighting, heating, TV & Telephone Points & A/c Points in Hall, and master Bed room

### TOILET FITTINGS & ACCESSORIES

- Sanitary Fittings: Ceramic/Glazed flooring tile cladding in all toilets up to 7'0" height & rest 5' height in Wet area with necessary high quality fixtures & fittings of Kohler/Jaguar or equivalent
- CP Fittings: Hot and cold single lever wall mixture & Over head shower of Kohler / Jaguar or equivalent make in toilets
- Shower glass partition in Master Bedroom Toilet
- One granite / marble counter top wash basin in master bedroom toilet

LIFT: Automatic Stainless Steel 8 Passenger Lifts and 13 Passenger of Service Lifts of Kone / Schindler / Otis or equivalent make





The image is a photograph of a modern kitchen with orange and white cabinetry, a white countertop, and a stainless steel oven. A dining table with a white tablecloth and a glass of red wine is visible in the foreground.

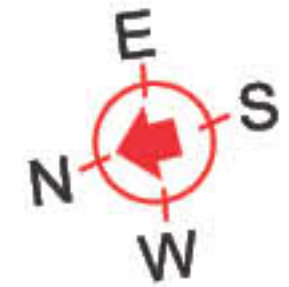
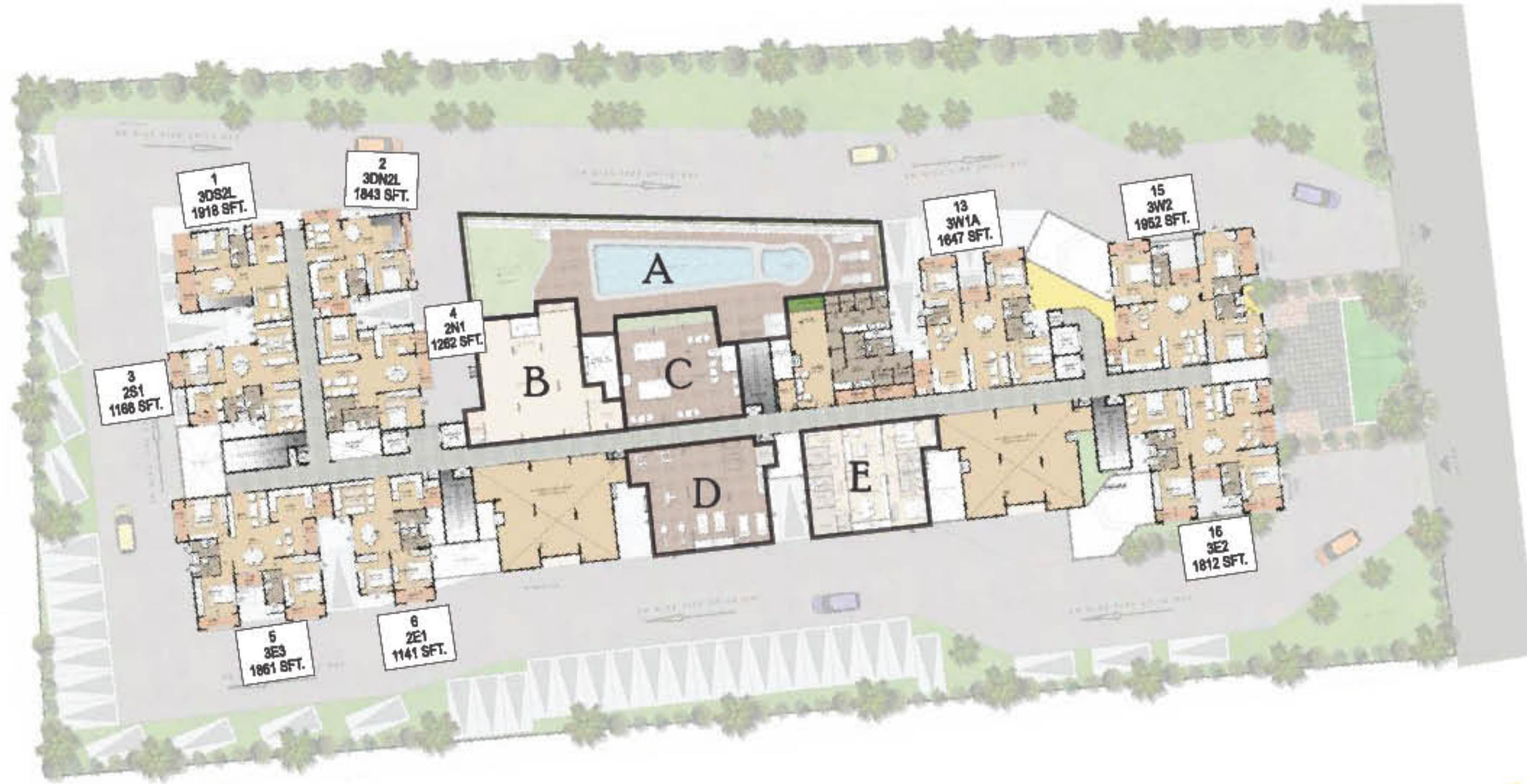
## *Healthy relationships.*



Add that spice to your relationships with the right kind of the ingredients. Simmer them all in the cream of contentment. Sprinkle joy and shreds of sheer bliss. Garnish with just the right amount of love. And serve with a smile. For the right way to one's heart is through the stomach. Here's the right setting for you to explore your culinary skills to the fullest and win hearts.



# Typical Floor Plan (1st Floor)



- A. Swimming pool with lawn & deck area
- B. Multipurpose hall
- C. Indoor games room
- D. Gymnasium
- E. Waiting lounge, admin office, steam, sauna and jacuzzi with changing rooms & AC guest rooms



Typical Floor Plan (2nd, 4th, 6th, 8th & 10th Floor)



Typical Floor Plan (3rd, 5th, 7th & 9th Floor)





Typical Floor Plan (11th Floor)



Typical Floor Plan (12th Floor)





## Close relationships.

Maple is situated at Kundalahalli, one of the prime locations in Bangalore. With just a few kilometers between you and IIPL, you can access your workplace easily. The high end shopping haven in MG Road is not too far, while Brookefield and Marathahalli Ring Road are also close to your residence. Enjoy the benefit of access to reputed schools and colleges in the vicinity. The upshot of this proximity is that, you can spend more time with your loved ones as you save time on commuting.

### The distance to Mahaveer Maple from major landmarks

HyperCity	:	0.5Km
Marathahalli	:	2 Km
Innovative Multiplex	:	2.5Km
Cosmos Mall	:	1.5Km
Forum Value Mall	:	3.5Km
IIPL	:	5Km
Sap	:	4Km
Salapura GRTechPark	:	8Km
Intel	:	6Km
Stigma Tech Park	:	3Km
Vydehi Institute of Higher Medical Sciences	:	5Km

## Route Map

