



SHRACHI™
Dreamer. Doer.

Alpine

greenwood

nest



SHRACHI™
Dreamer. Doer.

THE URBAN NEST

• Nature provides homes for all creatures which are perfectly in tune with their needs and the environment. Inspired by this aspect of the natural world, Bengal Shrachi has created Greenwood Nest, a 4.45 acre residential project, which caters to your unique lifestyle.

• With 192 spacious apartments in B+G+12 towers, Alpine is a sanctuary from the plagues of urban life, with the perfect blend of luxury, comfort and convenience.



- Garden-facing apartments with a spectacular view of the central greens
- Two automatic elevators in every tower
- Ample car parking facilities in the ground floor and basement
- Water filtration plant
- A standby generator to provide power to service and residential areas
- Fire-safety systems
- High efficiency in space utilization
- Service balcony

SPECIAL FEATURES

- Exclusive location near Action Area-1, near DLF IT Park, just 10 km away from the international airport
- Every apartment is equipped with a modular kitchen
- Pollution-free natural surroundings



Artist's Impression



SOWING THE SEEDS OF THE GOOD LIFE

BENGAL SHRACHI

Greenwood Nest is an initiative of the Shrachi Group, a name to reckon with in diverse enterprises such as agro-machinery, realty, engineering, finance, IT and healthcare. Over the last decade, the Group's real estate division has been providing quality housing solutions to

address the need for affordable housing in West Bengal.

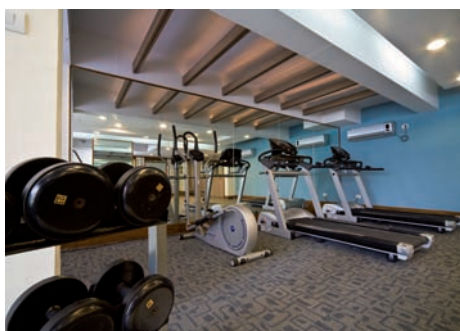
NEW TOWN - A NEW AGE IN KOLKATA

Spread across 3075 hectares and housing over 7.5 lakh people, New Town represents the next level of urbanisation

in Kolkata. Naturally, it is supported by the best of infrastructural facilities: schools, healthcare centres, commercial plazas and eco-parks. With its well-planned environment and abundance of green, it is no wonder that New Town is now the most sought-after address in the city.

LUXURY AMENITIES

- Lush central greens for long walks, picnics or just a breath of fresh air
- Children's play area to give your children a beautiful and safe environment
- A spacious community hall for any occasion
- An exclusive club, offering you countless ways to unwind after a long day or spend some quality time with your family
- A gym and swimming pool to keep you and your loved ones in the best of health



LOCATION MAP



STANDARD SPECIFICATIONS OF FLATS IN 'ALPINE'

1	Foundation	RCC foundation
2	Super structure	RCC framed structure
3	Bedrooms - floor Bedrooms - walls	Vitrified tiles/Laminated wooden flooring POP
4	Living/Dining - floor Living/Dining - walls	Vitrified tiles POP
5	Kitchen Floor Walls Counter Sink	Modular kitchen Ceramic tiles Glazed tiles upto 2' above counter Granite Stainless steel
6	Toilet Floor Walls WC Wash basin Fittings	Anti-skid ceramic tiles Glass tiles/Ceramic tiles Good quality EWC Porcelain Good quality CP fittings
7	Door	Painted flush door/Imported modular door
8	Window	Anodized aluminium/UPVC
9	External finish	Weather coat paint over plaster
10	Electrical	Concealed copper wiring and modular switch
11	DG back	At extra cost

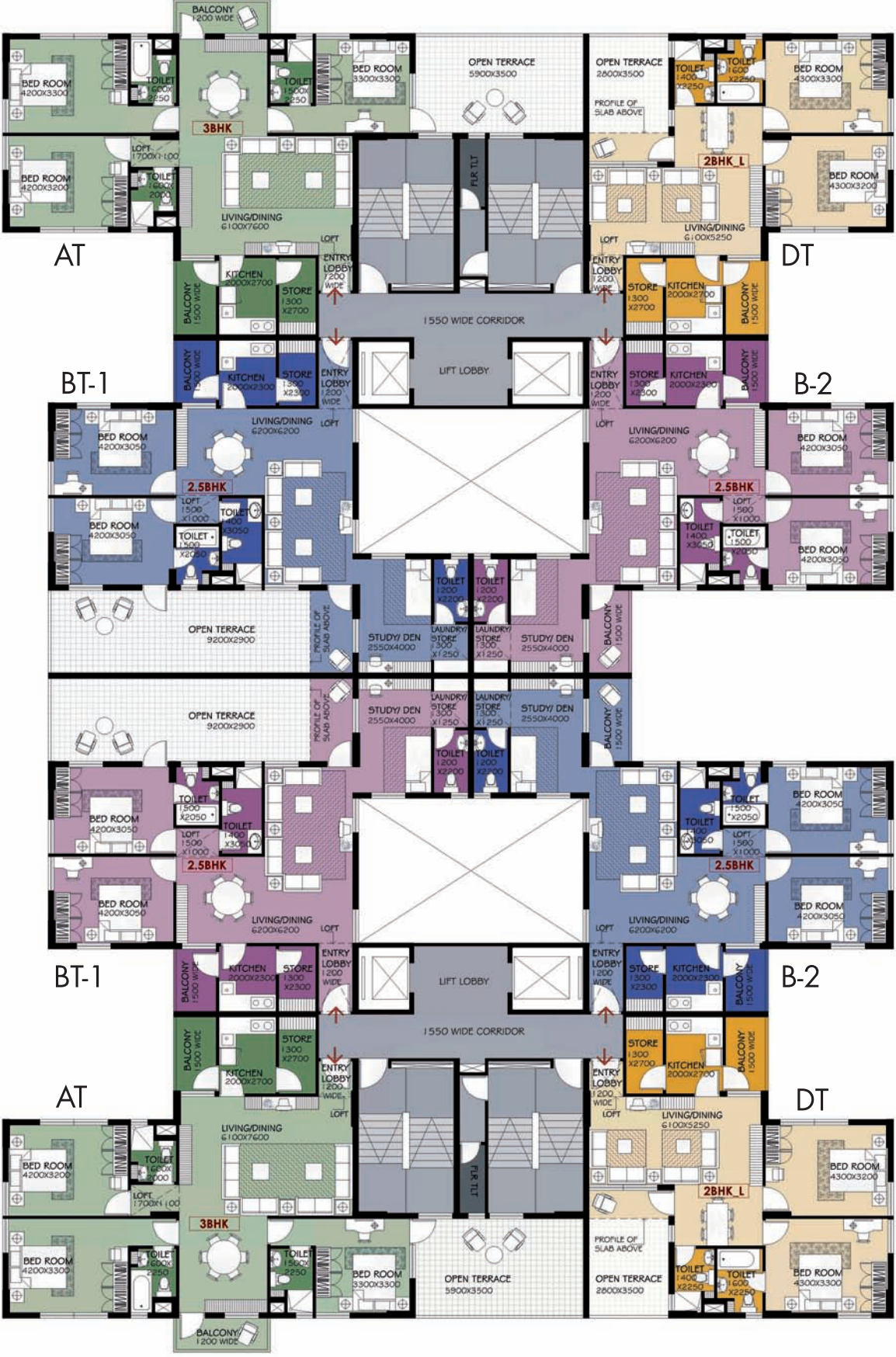


THE ARCHITECT

A graduate of Jadavpur University, Anindya Basu developed his design skills while working with eminent architect Prabir Mitra for over a decade, before setting up his own practice. Since his college days, he has won numerous awards for professional cartooning (TFAI 1986 & 1987), student design (Spartek Competition Winner 1989), and Interior Design (IIID MK Awards 2007). In 2001 he was honoured with the 'Navonmesha Puraskar' for his talent and creativity in the field of architecture.

PORTFOLIO

- Interior design of public areas, Raichak Ffort Hotel, Raichak; Akar-Prakar Art Gallery, Kolkata
- 2nd prize winner: Star Theatre Revival KMC Competition proposal
- Selected entry: The Indian Museum Bicentennial restoration proposal.



Left Wing

Right Wing



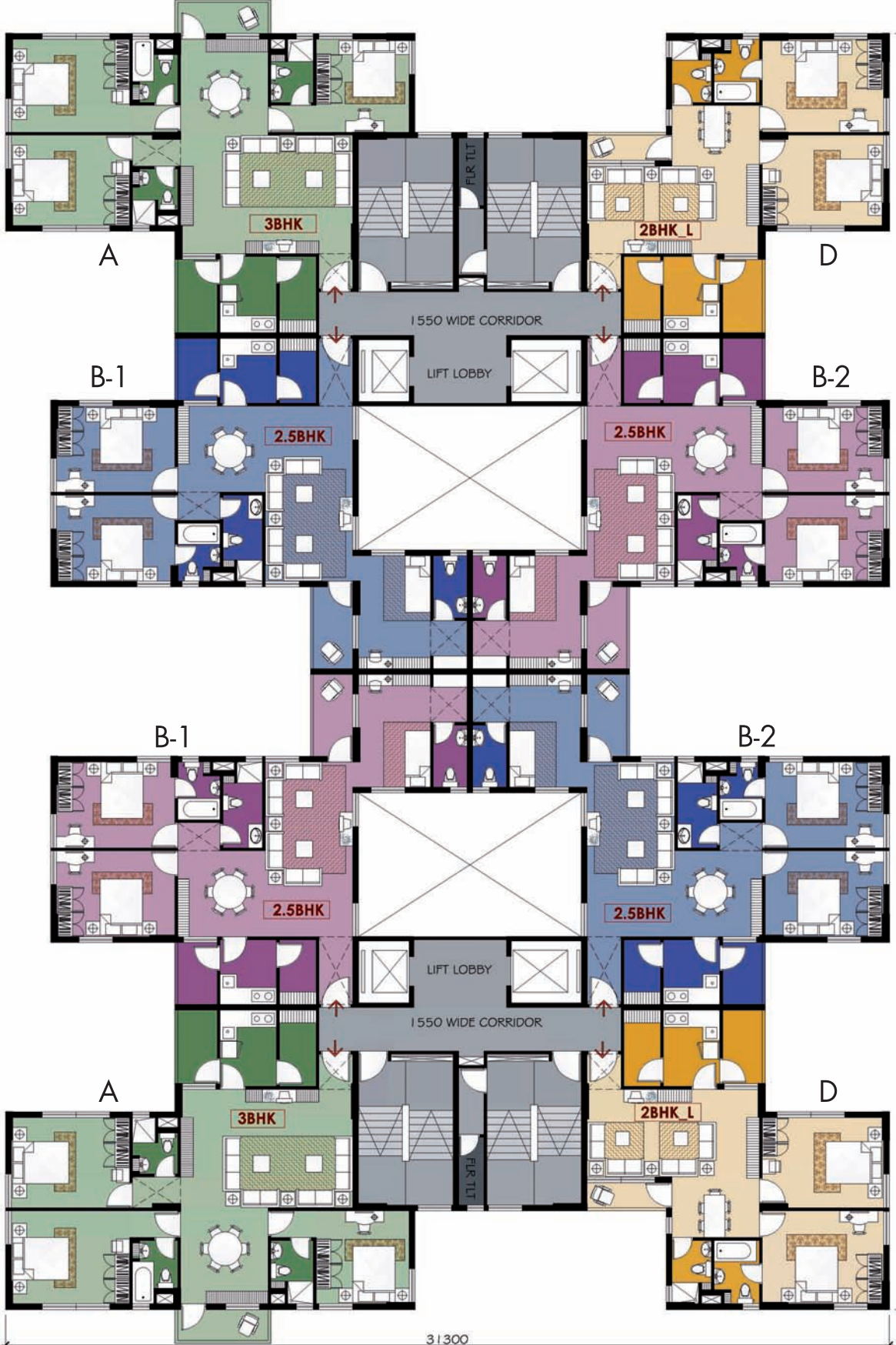
**ALPINE-1: B+G+12 STOREYED
FIRST FLOOR PLAN**

Type	Area in sq. ft.
AT	1635+226
DT	1190+140
BT-1	1485+345
B2	1485



Left Wing

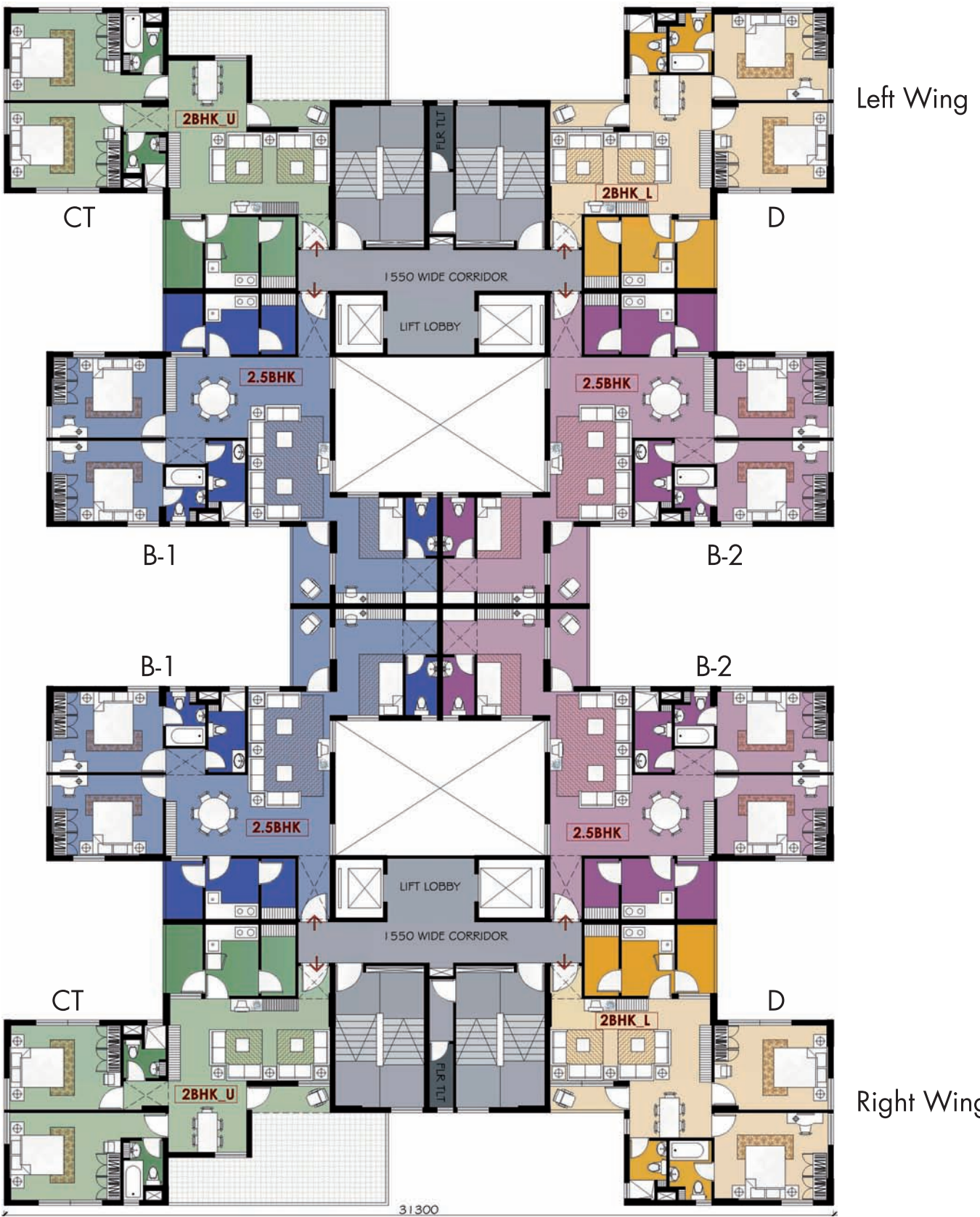
Right Wing



**ALPINE-1: B+G+12 STOREYED
SECOND TO EIGHTH FLOOR PLAN**

Type	Area in sq. ft.
A	1635
B-1	1485
B-2	1485
D	1190





Left Wing

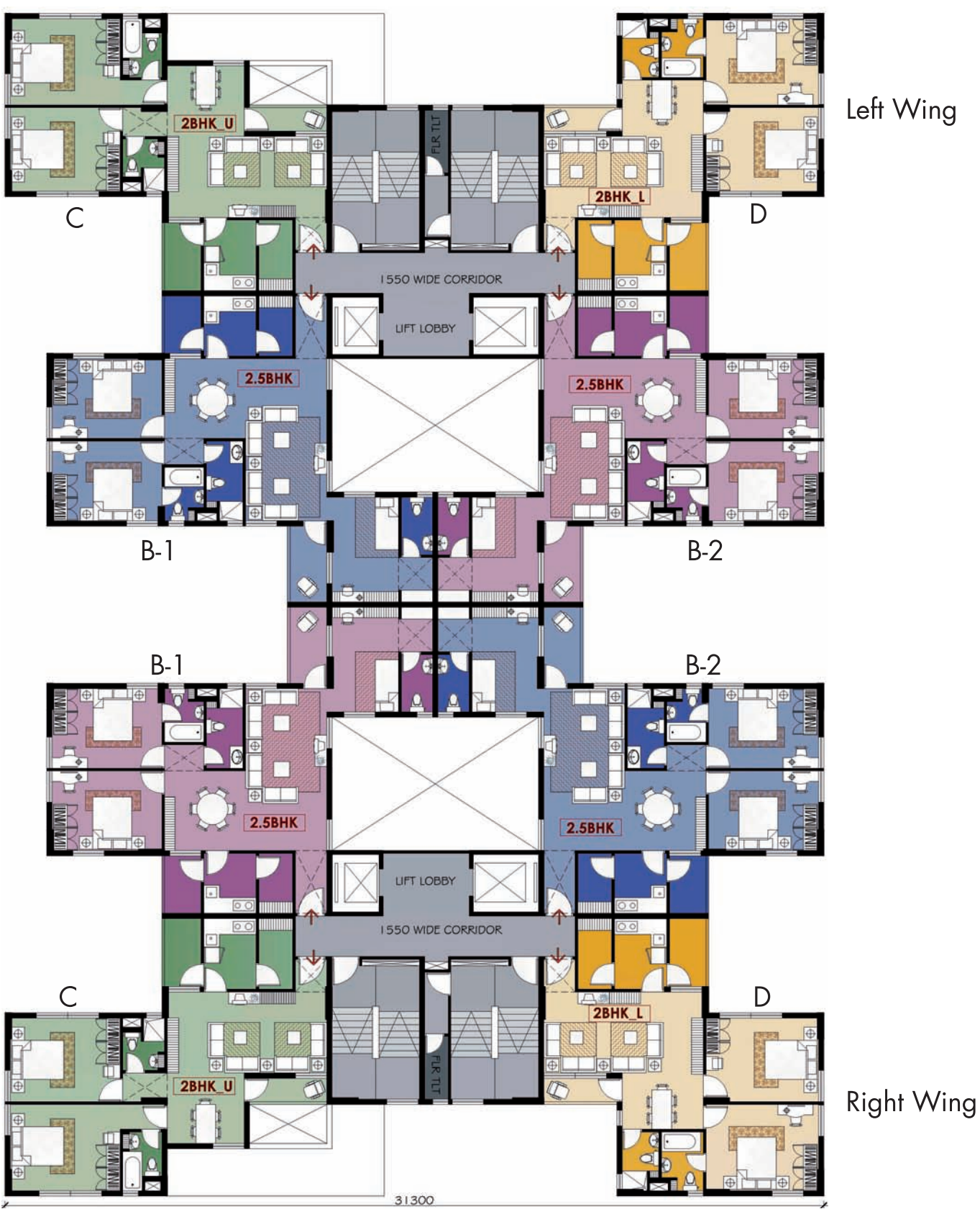
Right Wing

31300

**ALPINE-1: B+G+12 STOREYED
NINTH FLOOR PLAN**



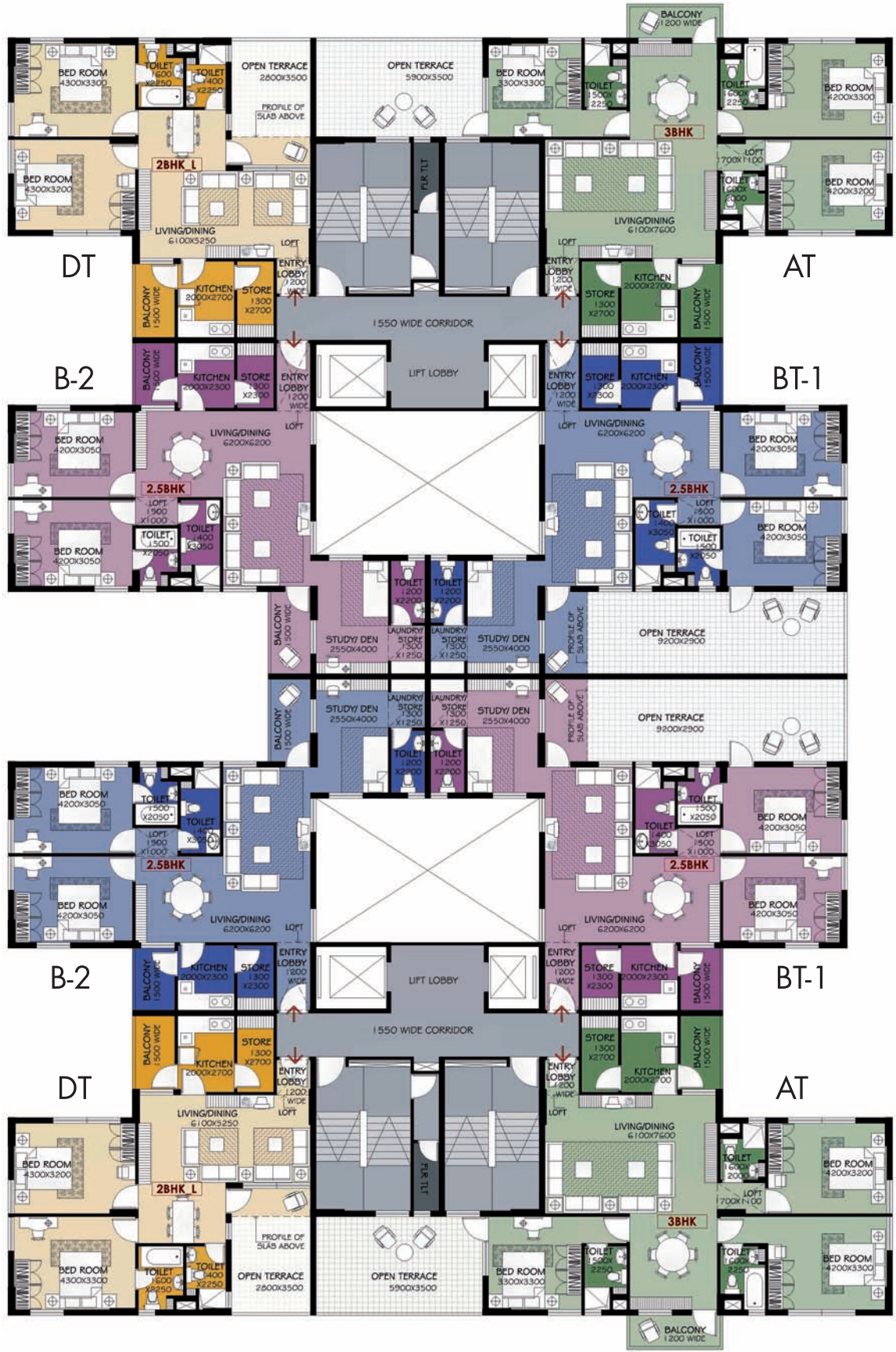
Type	Area in sq. ft.
CT	1255+287
D	1190
B-1	1485
B-2	1485



ALPINE-1: B+G+ 12 STOREYED TENTH TO TWELFTH FLOOR PLAN

Type	Area in sq. ft.
C	1255
D	1190
B-1	1485
B-2	1485

Left Wing



Right Wing

**ALPINE-2: B+G+ 12 STOREYED
FIRST FLOOR PLAN**

Type	Area in sq. ft.
AT	1635+226
DT	1190+140
BT-1	1485+345
B2	1485

Left Wing



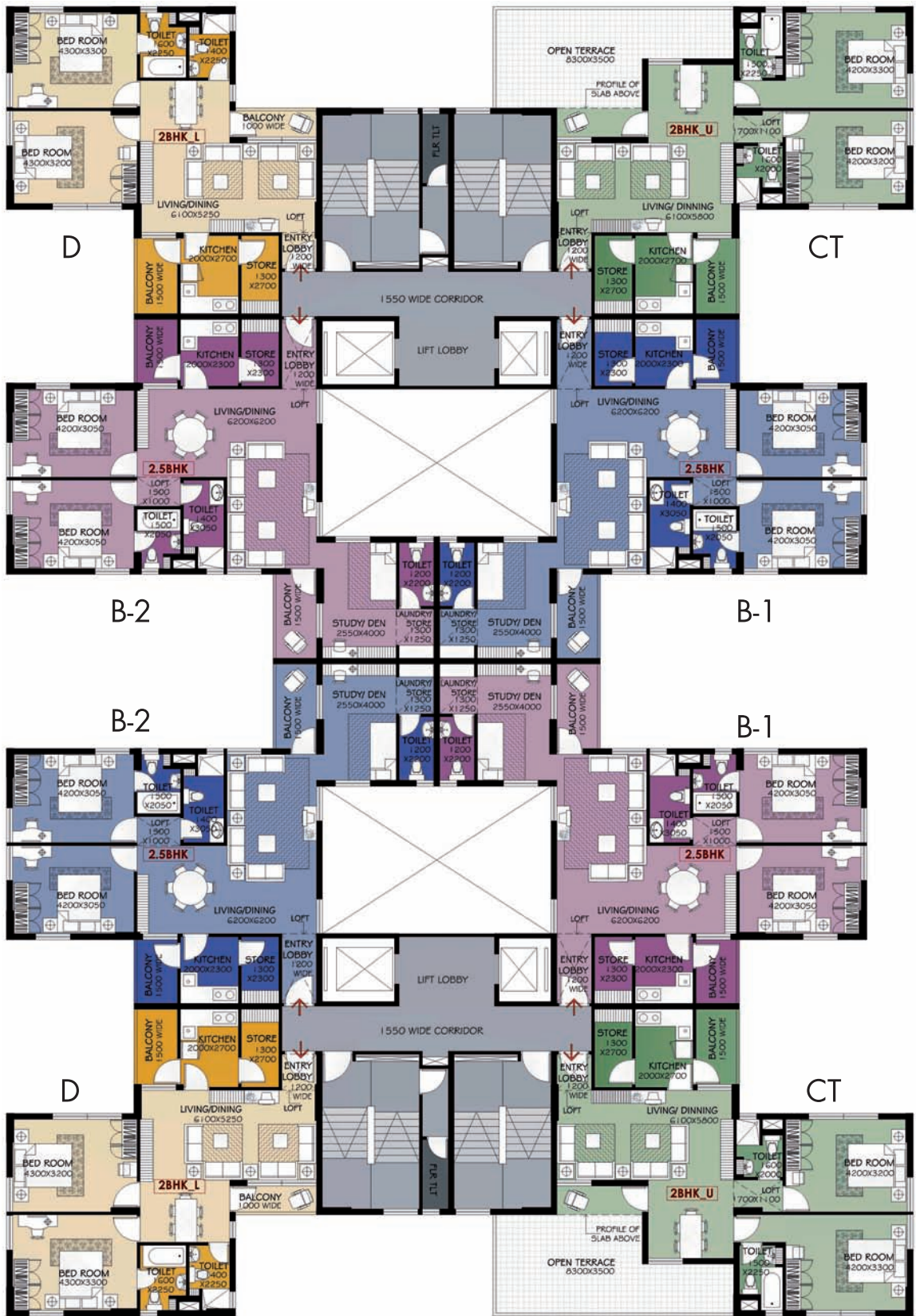
Right Wing

**ALPINE-2: B+G+ 12 STOREYED
SECOND TO EIGHTH FLOOR PLAN**



Type	Area in sq. ft.
A	1635
B-1	1485
B-2	1485
D	1190

Left Wing



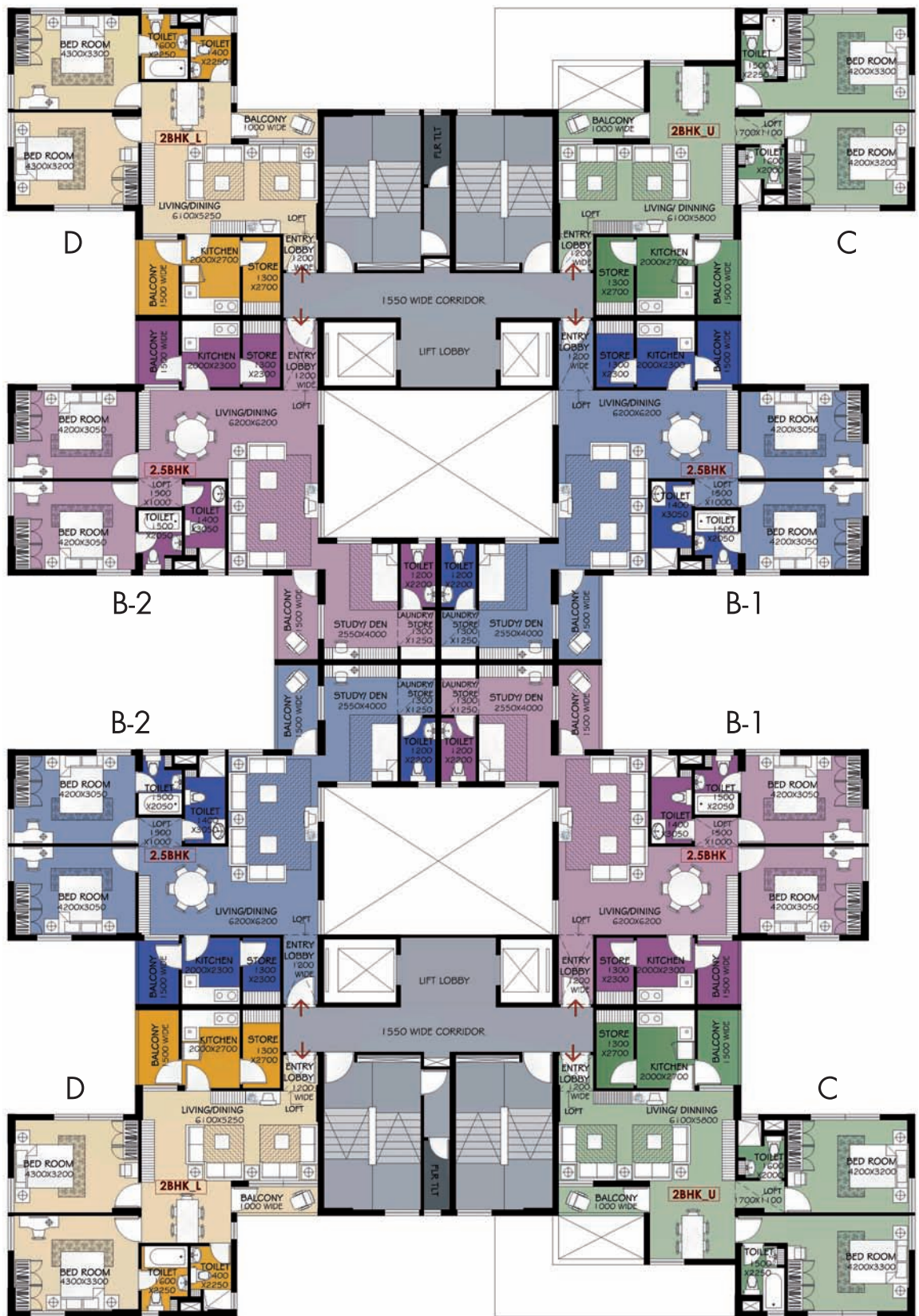
Right Wing



ALPINE-2: B+G+12 STOREYED NINTH FLOOR PLAN

Type	Area in sq. ft.
CT	1255+287
D	1190
B-1	1485
B-2	1485

Left Wing



Right Wing



ALPINE-2: B+G+12 STOREYED TENTH TO TWELFTH FLOOR PLAN

Type	Area in sq. ft.
C	1255
D	1190
B-1	1485
B-2	1485



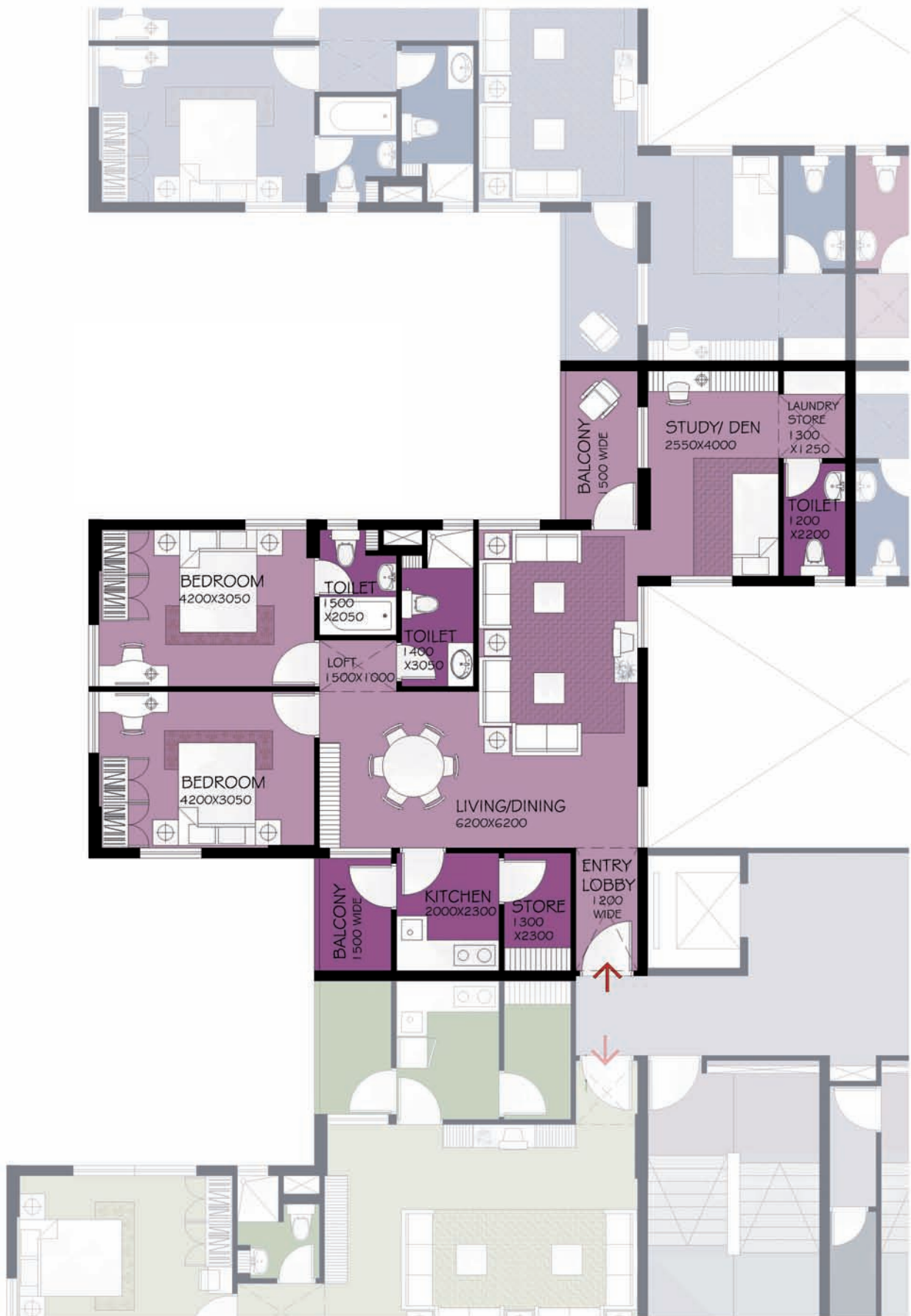
ALPINE BLOW UP 3BHK (A)

Type	Area in sq. ft.
A	1635



ALPINE BLOW UP 3BHK+TERRACE (AT)

Type	Area in sq. ft.
AT	1635+226 (terrace)



ALPINE BLOW UP 2.5BHK (B1)
B2 is mirror of B1

Type	Area in sq. ft.
B1	1485



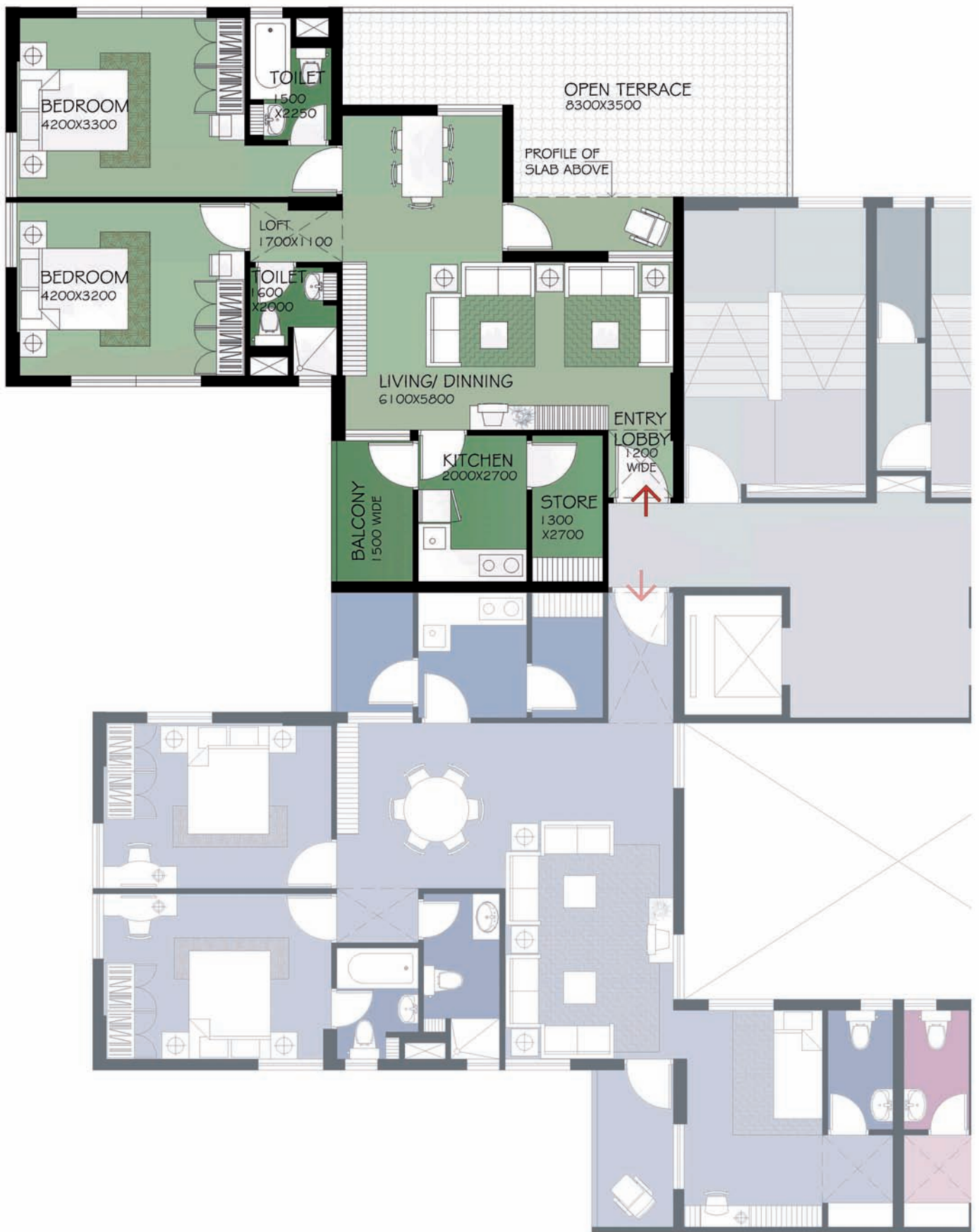
ALPINE BLOW UP 2.5BHK+TERRACE (BT1)

Type	Area in sq. ft.
BT-1	1485+345 (terrace)



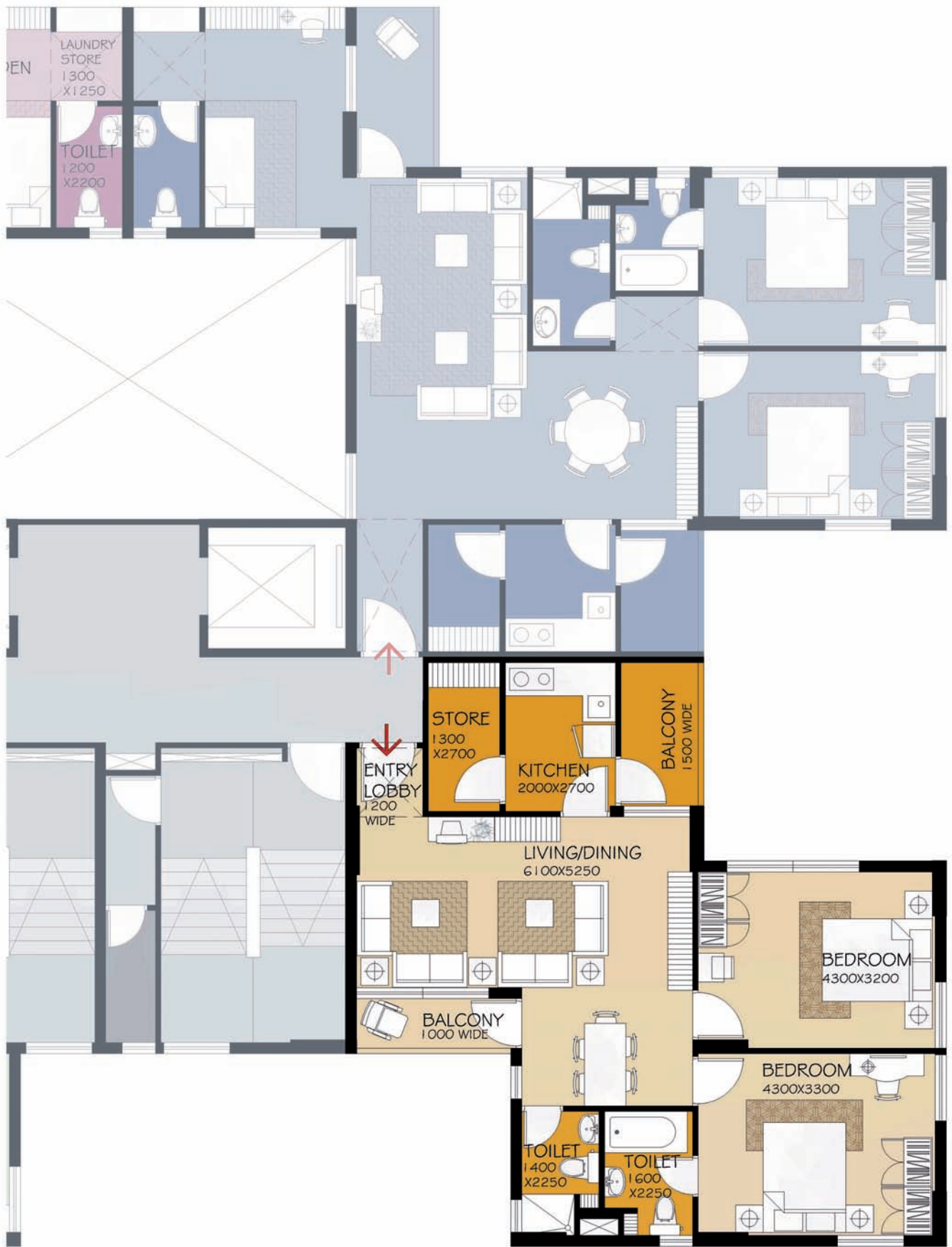
ALPINE BLOW UP 2BHK (C)

Type	Area in sq. ft.
C	1255



ALPINE BLOW UP 2BHK+TERRACE (CT)

Type	Area in sq. ft.
CT	1255+287 (terrace)



ALPINE BLOW UP 2BHK (D)

Type	Area in sq. ft.
D	1190



ALPINE BLOW UP 2BHK+TERRACE (DT)

Type	Area in sq. ft.
DT	1190+140 (terrace)

Land for future development



Land for future development

Land for future development



MASTER PLAN

Disclaimer: All layout plans and specifications as shown are proposed, tentative and subject to approval of the appropriate competent authority and may be changed by Bengal Shracchi Housing Development Ltd without intimation. The overall picture of the development that may take place, and the tentative description of the overall development plan are not intended to convey any impression of any right, title or interest in any of the zones to be developed and are merely provided to acquaint you of the overall development.



SHRACHITM
Dreamer. Doer.

Bengal Shrachi Housing Development Ltd.

Shrachi Tower, 686, Anandapur, EM Bypass,
RB Connector Junction, Kolkata 700107, West Bengal.

Ph: 033 3984 3984 Fax: 033 3984 4249

Email: marketingbsh@shrachi.com

www.shrachi.com