

**THE ICONIC CORENTHUM
IS A STATE OF THE ART OFFICE COMPLEX
BUILT WITH A DILATED IRIS TO DETAIL**

ZRICKS

DAY VIEW



STATE OF THE ART WORK PLACE

THE ICONIC CORENTHUM is a 160m tall tower with roof top sky deck for a 3600 view of Noida, a state of the art auditorium, fine dining at roof top level. Each plate measures approximately 1200 sqm and has been divided into five lobes to have proper delineation of activity pattern and activity concentration as per latest work schedule string diagrams. The lobes are in modular grid to have central bays for planning office and side bays for executive chambers and communication entablatures, with conferencing at its best. The tower is modern, automated, intelliroom where experience and information are shared.

The layout focuses on the increasing need to dynamically connect people to people. Each grid unit has been carefully planned with an emphasis on...



ZRICKS.COM



FULLY LIT VIEW

Site Plan & Specifications/Floor Plans are subject to change.
All images are artist's impressions and are indicative only.



ZRICKS.COM

ACES HIGH

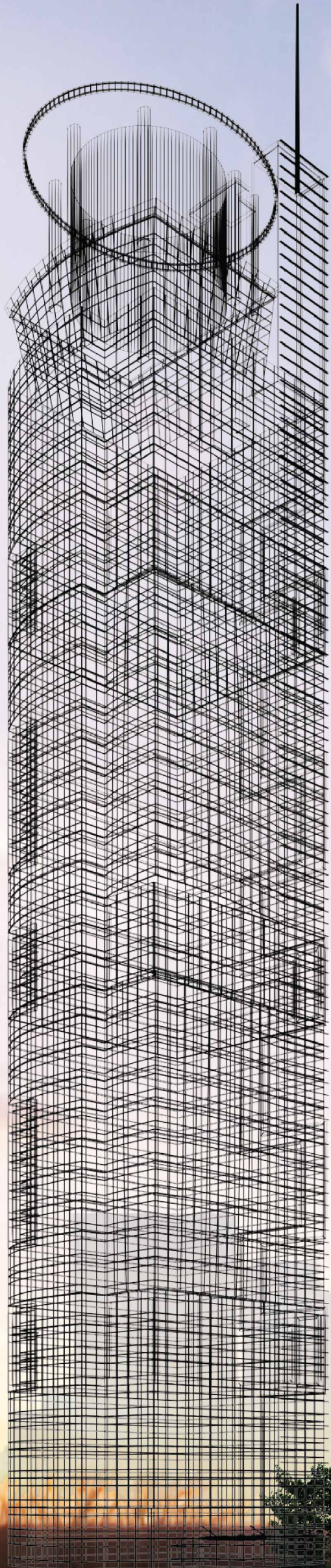
AIM HIGH AND YOU WILL SHOOT HIGH

There are ambitious men for whom good is not a benchmark. **THE ICONIC CORENTHUM** is an elegant tribute to these rarefied few. It is a super premium high rise office space with 160m high tower designed to deliver a new synonym of vertical urbanism. An experience of elaborate detailing juxtaposed with state of the art services.

The tower offers a 360° eagle eye view of unseen beauty of greenery.

Since time immemorial, the high and mighty have shown market preference for stratospheric heights. **THE ICONIC CORENTHUM** has been created to recreate this iconic experience nestled in the corenthum complex as a sinew of economic power and a humble tribute to skyline of Noida.

The Corenthum's bustling business domain serves as the ideal strategic choice for business services.



WIRED VIEW

ZR
RKS



A GREAT OPPURTUNITY SHAPING SKYLINE OF NCR'S HORIZON

A NEW SYNONYM OF VERTICAL URBANISM

BIOCLIMATIC ARCHITECTURE AT ITS BEST

• **THE ICONIC CORENTHUM** is an immaculate example of Bioclimatic Architecture- the concept of designing buildings and balancing the environment within.

• Working with natural forces around the building rather than against them.

• Bioclimatic architecture concerns itself with climate (or perception of design) as a major contextual generator and creating a built form with benign environment using minimal energy as its target.

• In **THE ICONIC CORENTHUM**, the use of natural resources has been done optimally to make it energy efficient.

• The building has been designed on fifth generation intelligent building concepts with green environs and vertical plantation geomancy in the right Japanese spirit.

• It's here that form meets function with Building Automation Systems, illumination, vertical gardens, movement pattern, implemented in the right perspective to have right activity patterns and circulation concentration.

FACADE VIEW



IKENOBIC PART OF CORENTHUM SAGA

STRATEGIC LOCATIONAL - SECTOR-62



THE CORENTHUM COMPLEX

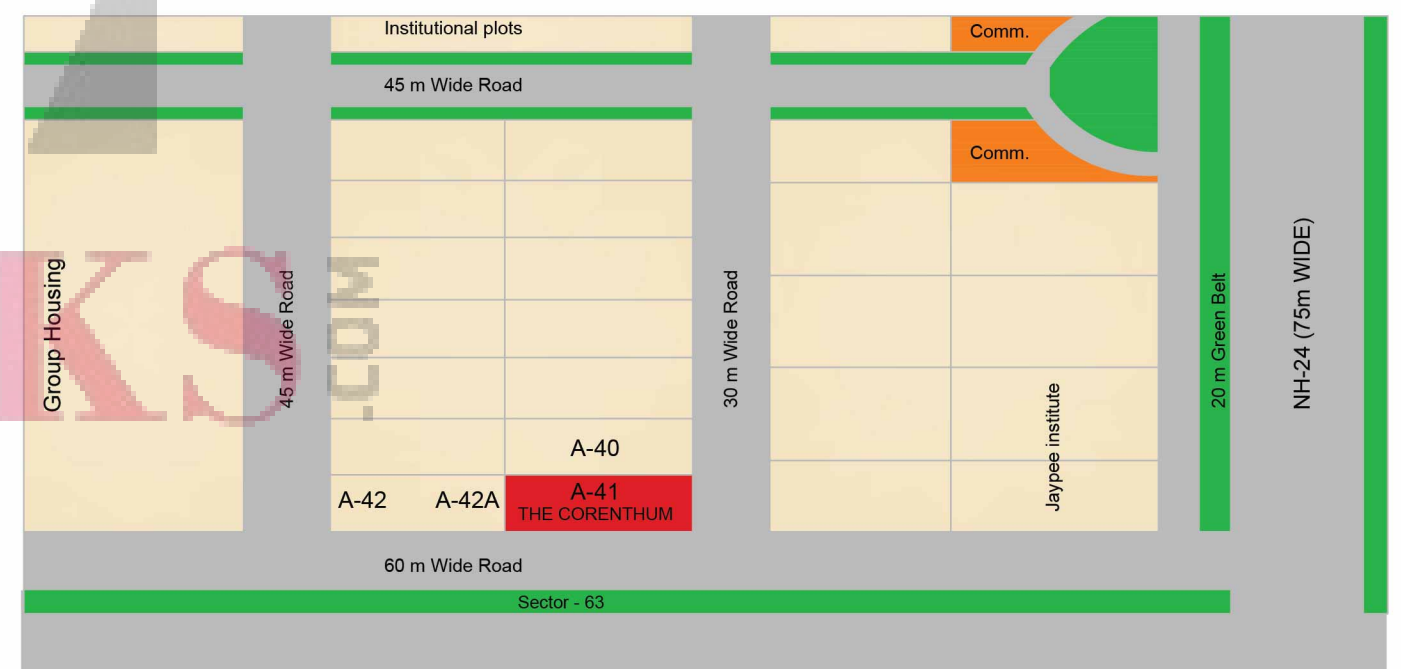


THE ICONIC CORENTHUM is a part of The Corenthum legacy and is located on plot no. A-41, Sector-62, Noida. It is the vertical shin of IKENOBIO geometry present in Corenthum's layout that even zen masters would have envied to possess. This creates a fourth generation ambience and is all set to become a landmark draped in mind expanding features in play and plug technology.

Situated right by NH-24, The Iconic Corenthum is abutted by a 30m

arterial road. Sector-62 is an urban work destination for multinational IT and BPO organizations. It already houses names such as - The Corenthum, HCL, Jaypee and Airtel. Noida has rapidly changed its face and today matches the best facility matrix of suburban cities of the country.

Every major corporate house both national and international is seeking space here for both commercial and residential requirements.



BRACING THE SKY WITH NEW FRONTIERS OF TECHNOLOGY

THINK GREEN THINK AHEAD

ENVIRONMENTALLY SENSITIVE

Energy and Atmosphere

- Natural daylight factor in 98% of the building
- Exceeding ASHRAE requirements for energy efficiency
- Energy efficient materials used during construction
- Accessibility to public transport
- Excavated top-soil preserved for later use
- Shade on paved areas to prevent heat island effect, grass on pavements
- Solar lamps for parking areas
- Use of dust screens around construction areas
- Pre-mixed concrete for construction
- Cement and bricks with fly ash concentration

- VFD's on AHU's, use of economizers
- Solar panels for electricity generation
- Solar water heating systems
- Waste segregation
- CFC free refrigerants, zero-ODP insulation
- Designated Smoking areas

Water Efficiency

- Low-flow plumbing fixtures
- Rainwater harvesting
- Grey water for irrigation
- Efficiently designed water balance diagram
- Efficient use of water in A/C systems
- 45 day water backup for uninterrupted operations



DAYLIGHT VIEW

ZRICKS.COM



LEADING EDGE OF TECHNOLOGY

ENERGY PERFORMANCE PAR EXCELLENCE

THE ICONIC CORENTHUM optimises its site orientation, which is specifically attuned to solar energy and wind. The building minimizes wind force interference by using the air stream to stabilize itself. The wind tunnel, located at the fire escape floor, funnels the wind through turbine generators to create energy. The full vertical landscaped wall is a perfect example of bionic architecture.

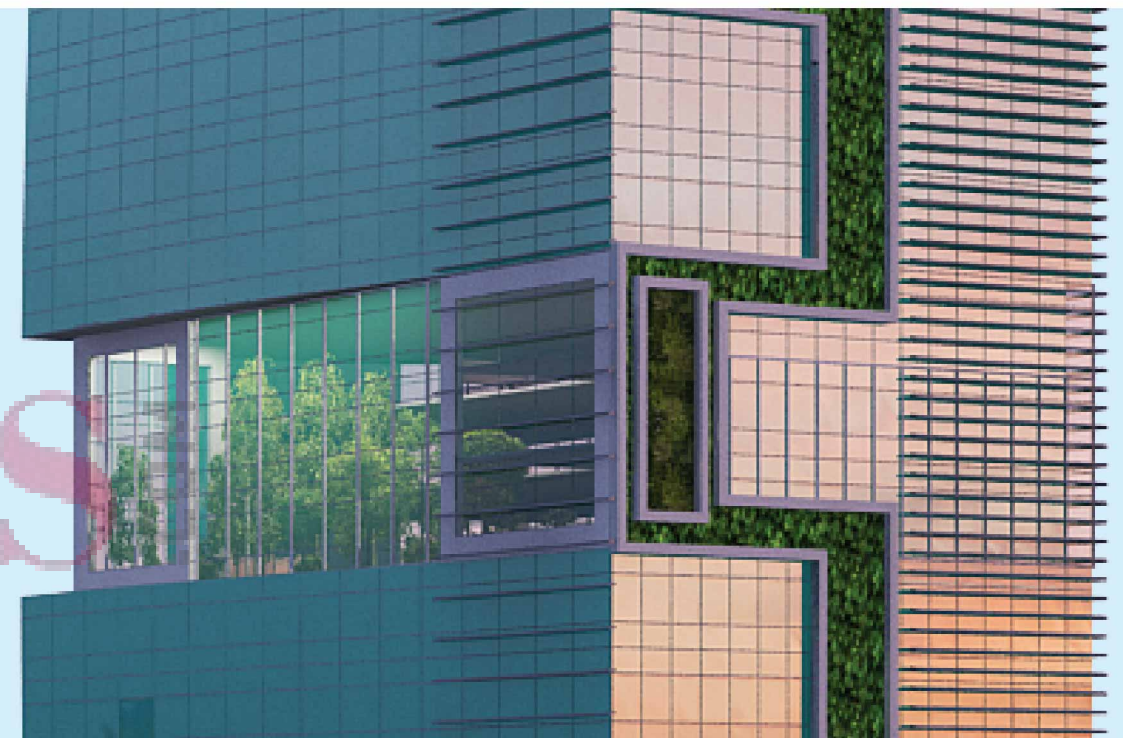
The fuselage and the grey water collection system are representative of the technological features that position this building at the leading edge of technology.

The goal of the building is to attain zero-energy consumption from public utilities and generate the required energy to sustain itself partly. **THE ICONIC CORENTHUM** has a 100% efficient water balance diagram.



Vertical Green Landscape View

CRICKS



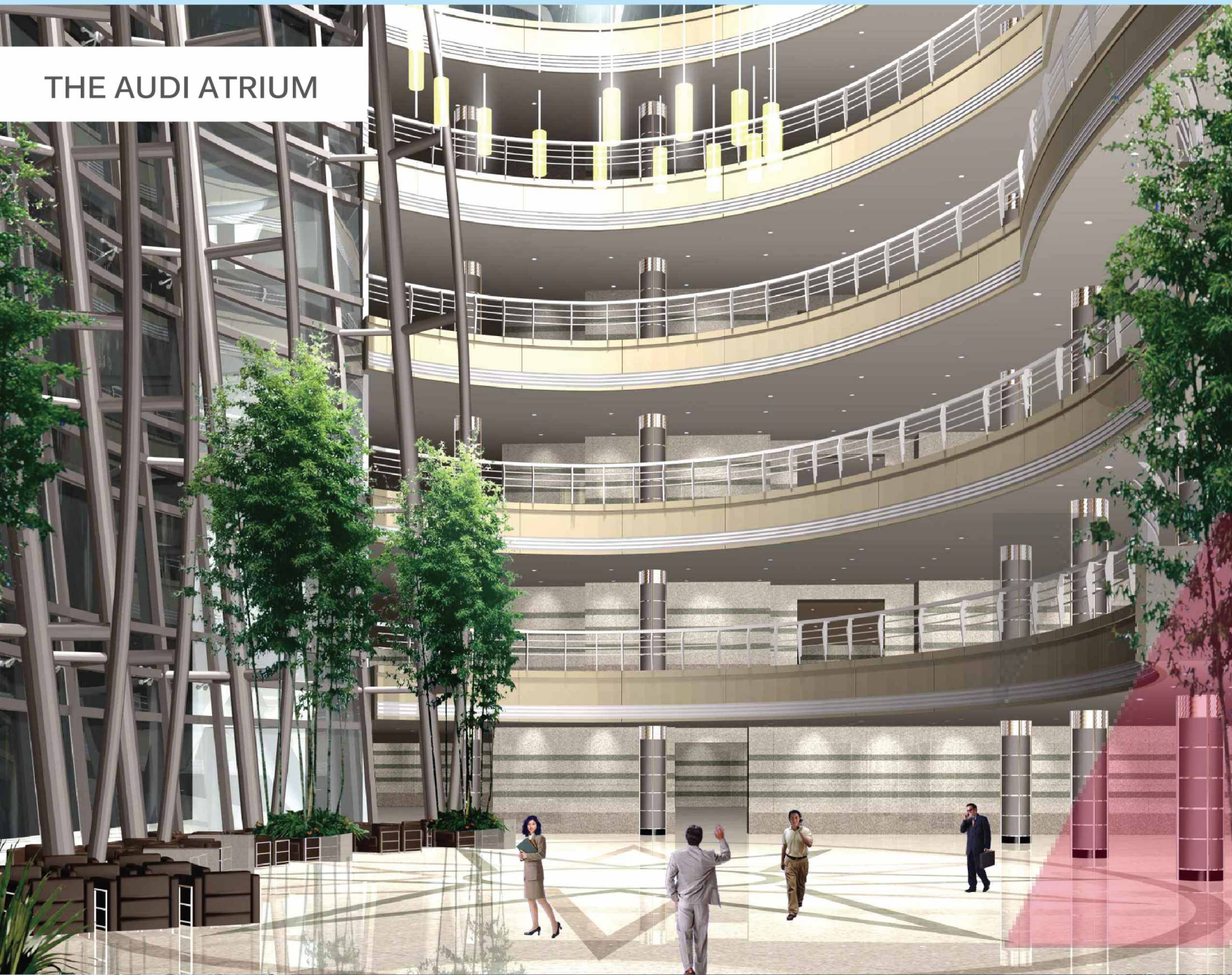
SUSTAINABLE ARCHITECTURE

- ENERGY MODELLED
- LEED CERTIFIED
- BEE COMPLIANT
- TERI GRIHA NORMS
- 100% WATER BALANCE



A PREMIUM OFFICE LIFESTYLE

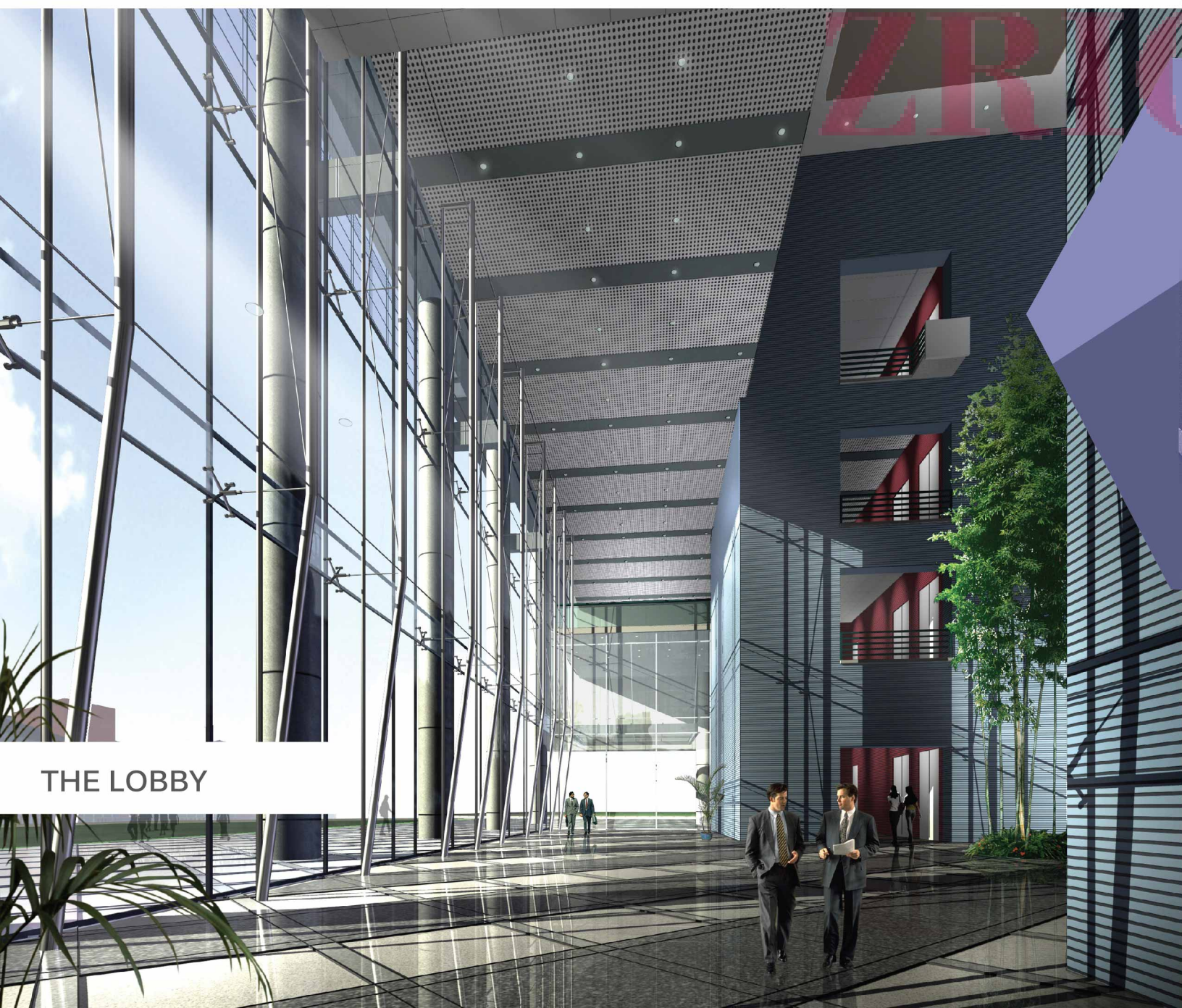
THE AUDI ATRIUM



MATCHLESS FEATURES

- Part of The Corenthum saga
- Sky decks at 140 m level
- World class Helipad
- State of the art high precision Double Decker lifts
- Top floor Auditorium for 90 people with convention centre having the latest technology
- Design element with passive Solar Architecture concept
- Cool roof system for terraces
- World class Rotation disc fine dining experience with culinary delight
- Green vertical wall with mist propagation
- Use of highly efficient double insulated LOWe glass to reduce IR
- ATMs and Banks
- High speed escalators connecting basement parking, health centre and BMS rooms
- Meditation Centre
- Welcoming double height entrance foyer with elegant lift lobbies and signages
- Loading dock
- 40 % scaleable parking
- Multitenant and signature floors
- Meeting Pods
- Cascade fountains abutting lobby
- Hanging entrance Aluminium and glass canopies
- Flexible floor spaces built to suite offices that grow with your business
- Start-Up Incubation Center

THE LOBBY



WORLD CLASS SPECIFICATIONS

THE AUDI



PREMIUM MATERIAL ADVOCATION

- **Structure:** Earthquake proof RCC framed structure with infill foam concrete blocks.
- **Wall Finishing:** Internal plastered and painted in pleasing shades of plastic emulsion in core/ lobe areas and texture/wallpapers in common areas.
- **External:** High performance double & single curtain walls. Al-pro panels in pleasing shades. All column exteriors in granite in ground floor and first floor and stainless steel cladding.
- **Flooring:** Italian marble/granite in common areas and vestibule entry. Granite flooring in toilets and pantry areas. High performance double glazed curtain walls in south direction.
- **Doors and Windows:** All doors veneer laminated with D line stainless steel fittings. Casement type windows in curtain walls.
- **Common Areas:** Lifts lobbies shall have architectural mouldings in granite, glass and SS304 Stainless Steel. State of the Art building automation systems provided in common areas.
- **Electrical:** Copper electrics as per ASEE Norms/ International Norms on 24x7 redundancy concept. Single point bus.
- **Water Supply:** Hot and cold pipe system in stainless steel with round the clock water supply in the complex.
- **Plumbing:** State of the art plumbing system with UPVC double stack fully ventilated systems.

FULLY LOADED

- USGBC
- UL
- ASTM
- DIN
- BS
- EU



THE LOBBY



FACILITY MANAGEMENT N+1 CONCEPT

PREMIUM MEP (365X24X7)

- **Engineering Intelligence:**

In **THE ICONIC CORENTHUM**, the Design complexity in the building controls the hub of level V automation. Varied sophisticated electronic system, hardware and software platforms have been considered.

- **HVAC system:**

Air conditioning: IAO addressing safety health & comfort on 24x7 concept with VFD's, Ground cooling techniques. State of the Art ventilation & humidity controls.

Refrigent selection with lowest ODP as per material protocol.

- **Fire Detection & Mitigation Systems:**

Fourth generation systems as per NFPA & NBC guidelines for high rise buildings.

- **PLEC:**

PLEC system with 100% power back up as per EHS compatible, with auto/manual synchronisation with PLC. Proper Lighting system as per IIESNA.

- **Safety Parameters:**

As per IHAS standards, 100% handicap friendly complex with state of art surveillance & CCTV systems. Minimum travel distances for ingress & egress facility as per international norms.

- **ECMES:**

Energy conservation parameters in equipments & systems as per LEED rating, ECBC codes, & double insulated glass, cool roof systems.

- **Facade:**

High performance curtain wall

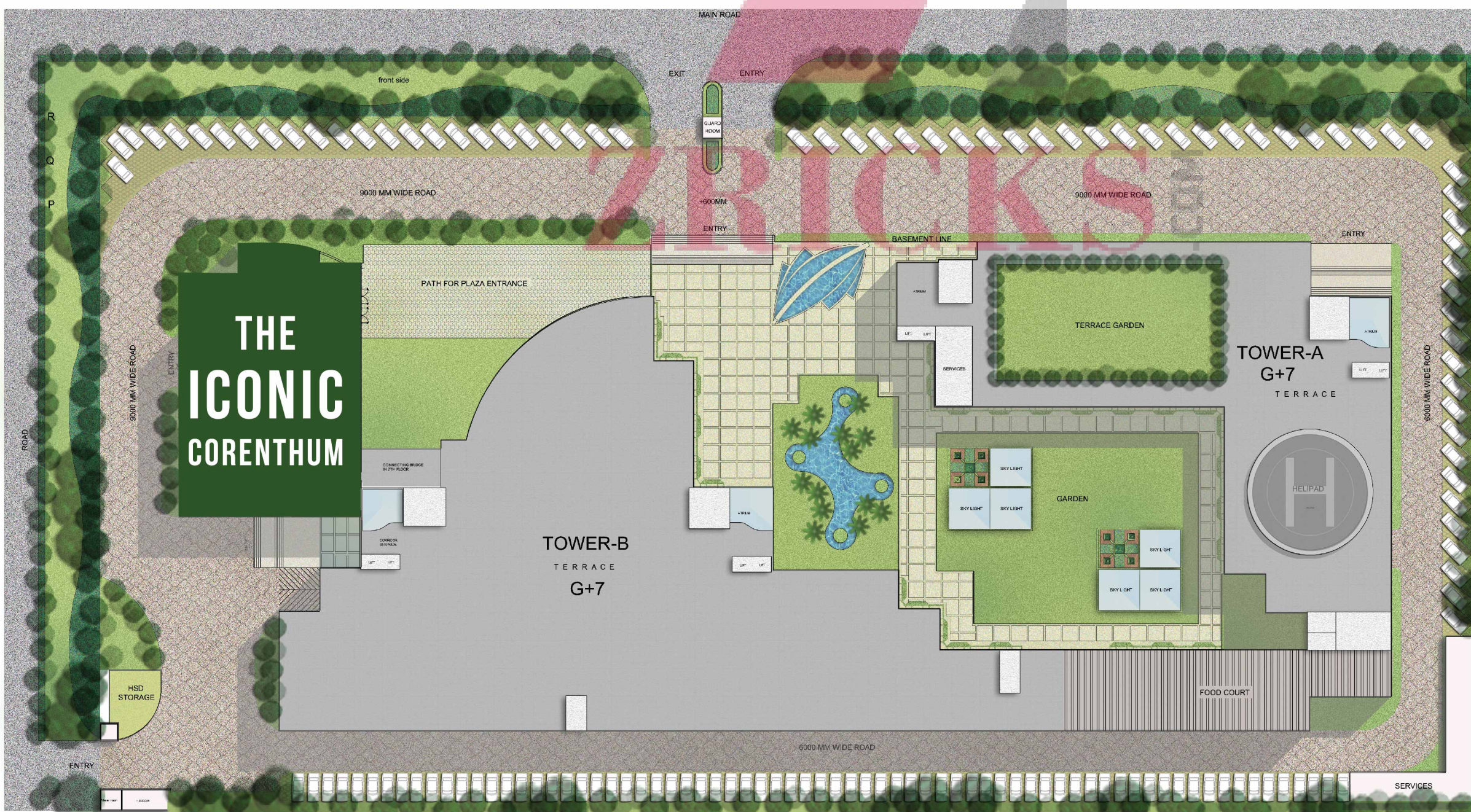
glazing with high acoustic value and low energy emissions. LOWE glass D6U's.

- **Communication & Networking:**

MUX facility on fiber optic IT enabled pre activated broadband & WiFi connectivity.

- **Material Advocation:**

Boasts of material advocations as per UL certification, ASTM, DIN,EN & ISO standards. The building conforms to ISO 14001-2004 EM systems.

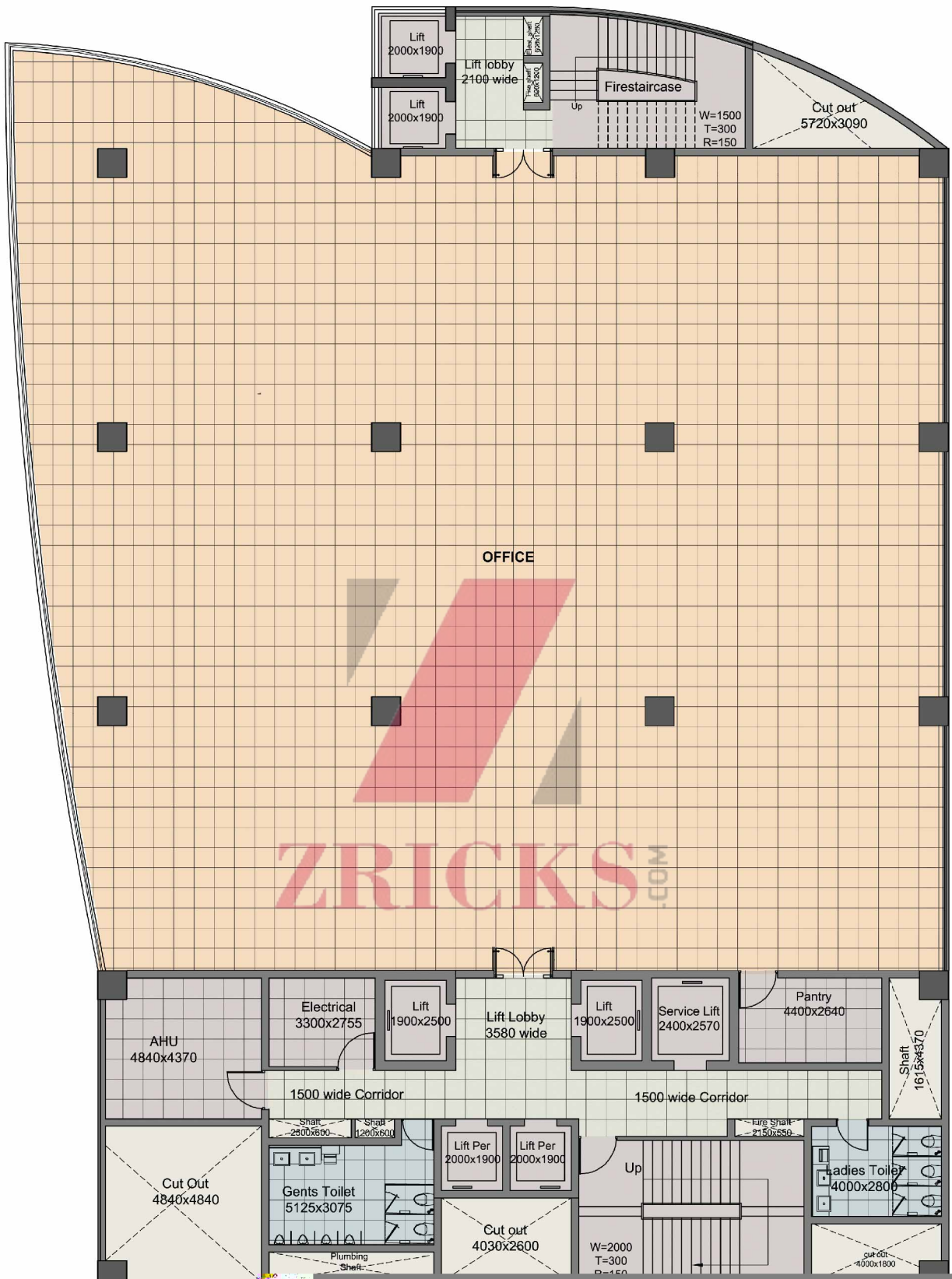


THE LAYOUT



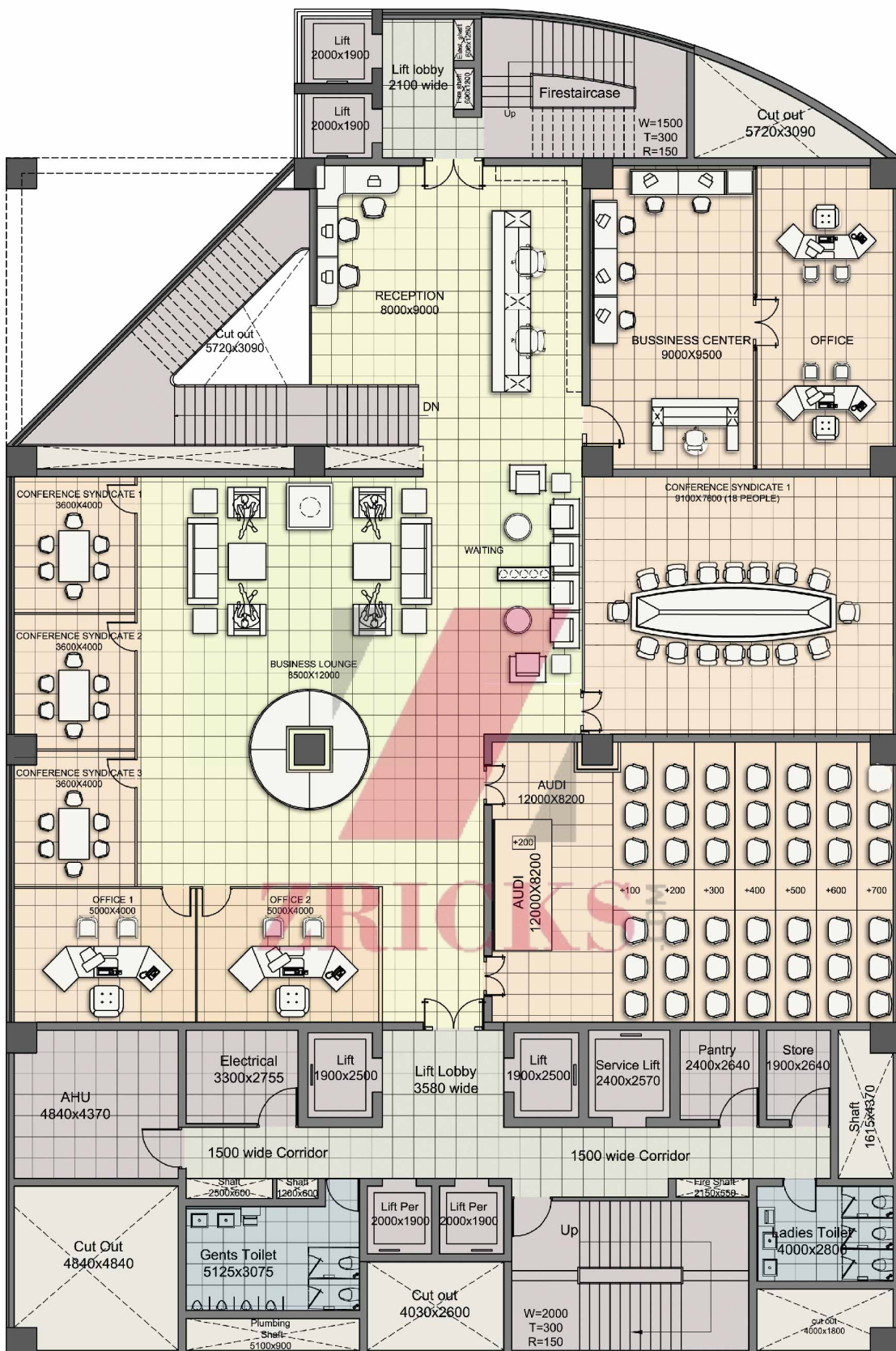
THE ICONIC CORENTHUM

Signature floors



THE ICONIC CORENTHUM

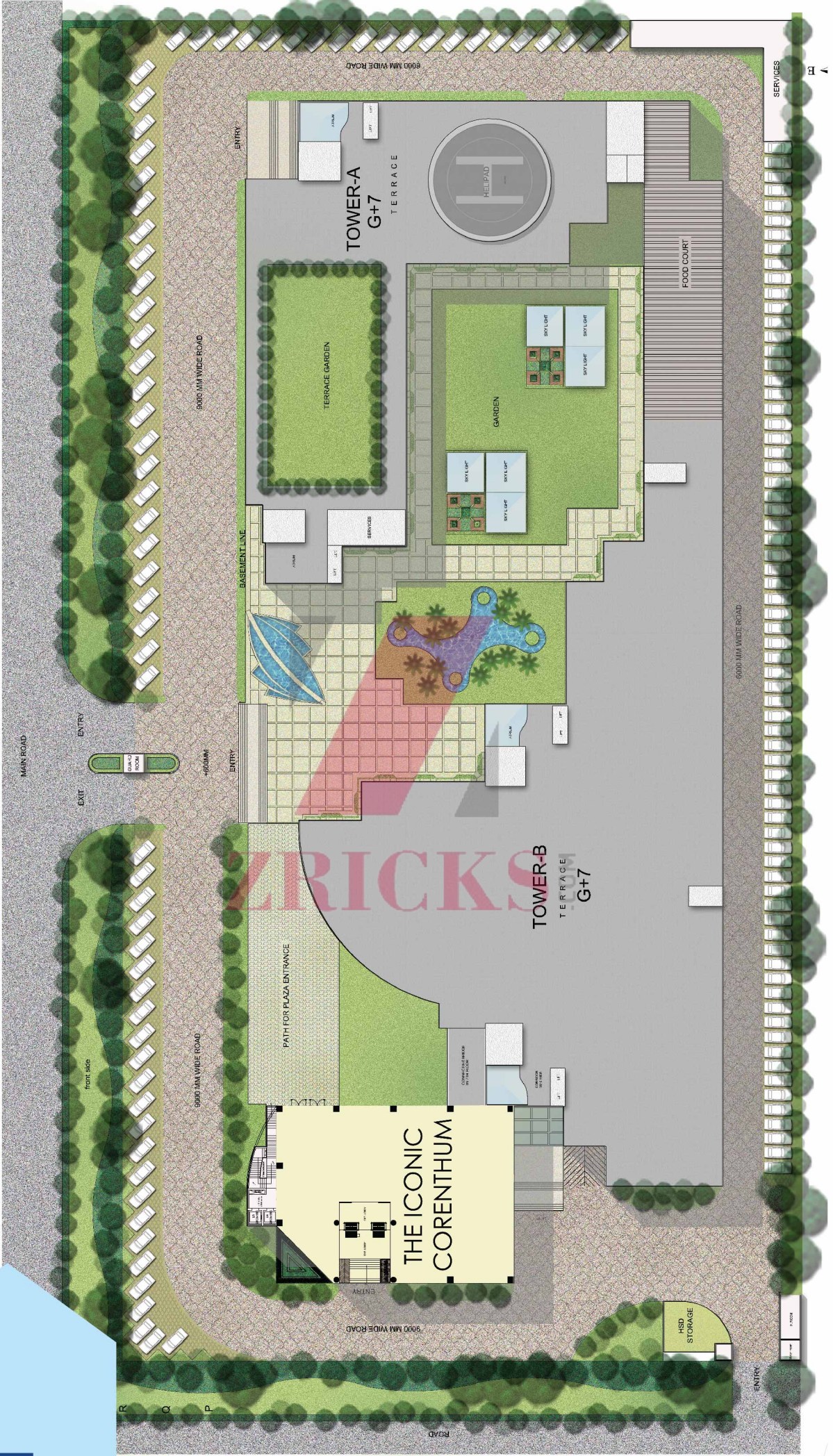
Business & Incubation Centre



1ST FLOOR



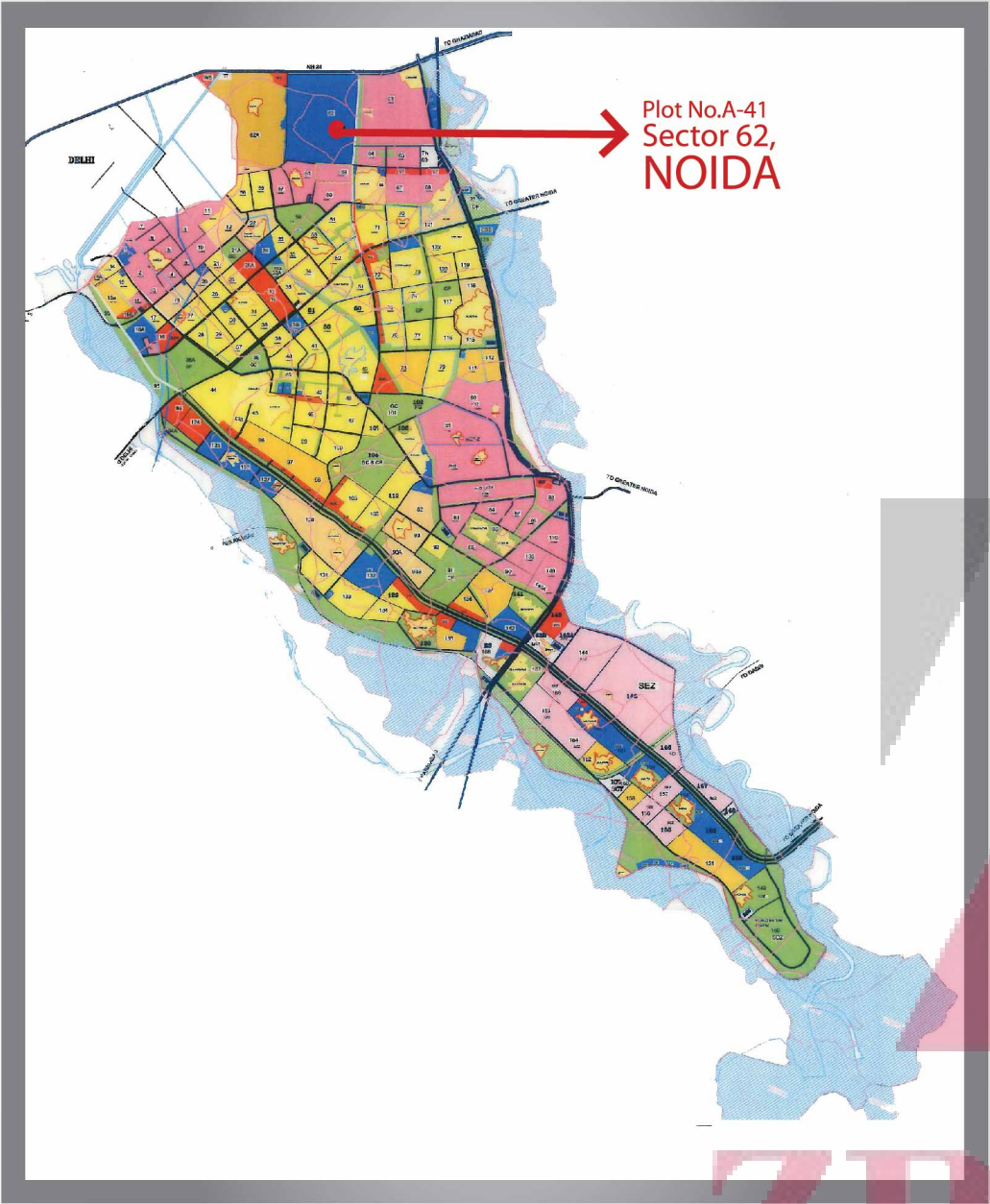
THE ICONIC CORENTHUM



THE LAYOUT



SEC 62, NOIDA



PROMOTERS:



Beaver International

Beaver International (India) Pvt. Ltd.
The Corenthum,
A-41, Sector- 62 Noida-201301
Ph:+91-120-4757777, +91-120-4757704
Website: www.thecorenthum.com

PROJECT CONSULTANTS:



HOLISTICS
Urban Innovations Pvt. Ltd.

Holistics Urban Innovations Private Limited
Terrace Tower A, The Corenthum,
A-41, Sec-62, Noida-201301
Ph: +91-120-4527777
Website: www.huipl.com

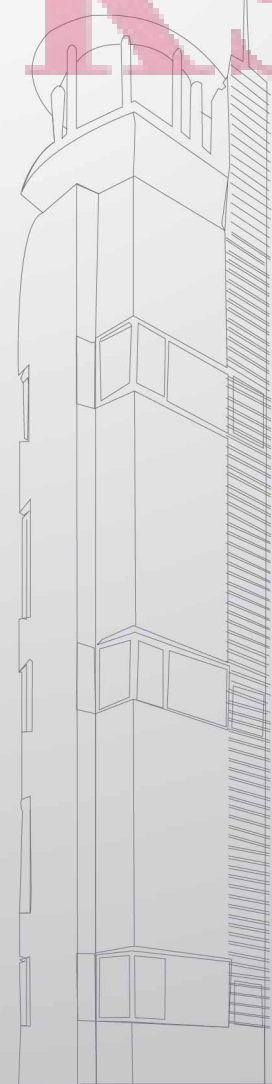
ZRICKS.COM



THE ICONIC CORENTHUM
Redefining Renaissance Of High Rise Workplace



ZRICKS.COM



PROMOTERS:

 **Beaver International**

Beaver International (India) Pvt. Ltd.
The Corenthum,
A-41, Sector- 62 Noida-201301
Ph:+91-120-4757777, +91-120-4757704
Website: www.thecorenthum.com

THE ICONIC CORENTHUM
Redefining Renaissance Of High Rise Workplace
SEC 62, NOIDA