



TRADITION OF TRUST

ECNON



# KING'S COURT

HOMES AT  
YAMUNA EXPRESSWAY

*Harmony of space, aesthetics and design, King's Court Apartments -  
A place that you can escape to.....A place that's yours..... To a higher living.....  
Complete with contemporary styling and smooth line finishes*

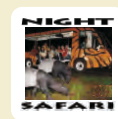
Imagine a treat of "Royal Life", garnished with "Luxury", accompanied by "Convenience" placed well within your "Budget" turning into Reality!

ECNON KING'S COURT pioneers the concept of "LUXURY BUDGET LIVING" at the crowning location on Yamuna Expressway. Spread over 10171 sqm approx, are aesthetically designed 1, 2 and 3 BHK apartments, specifically tailored to address minor requirements of people in Metros. KING COURTIERs will find a bevy of facilities intended to luxuriously delight their every sense of living a quality life; from fitness to recreation; family & friends get together to kids play, energetic sporting to leisurely walking, and relaxation to rejuvenation and much more.

Located at stellar location on Yamuna Expressway and dwelled with India's only F-1 Track, World's 4th Night Safari, Dedicated Education and Tech Zone hub, ECNON KING'S COURT will be your International address and global benchmark with local breathers around.

Its not just a Home, it's a way of INTERNATIONAL LIFE with a ROYAL ATTITUDE.

CRICKETS

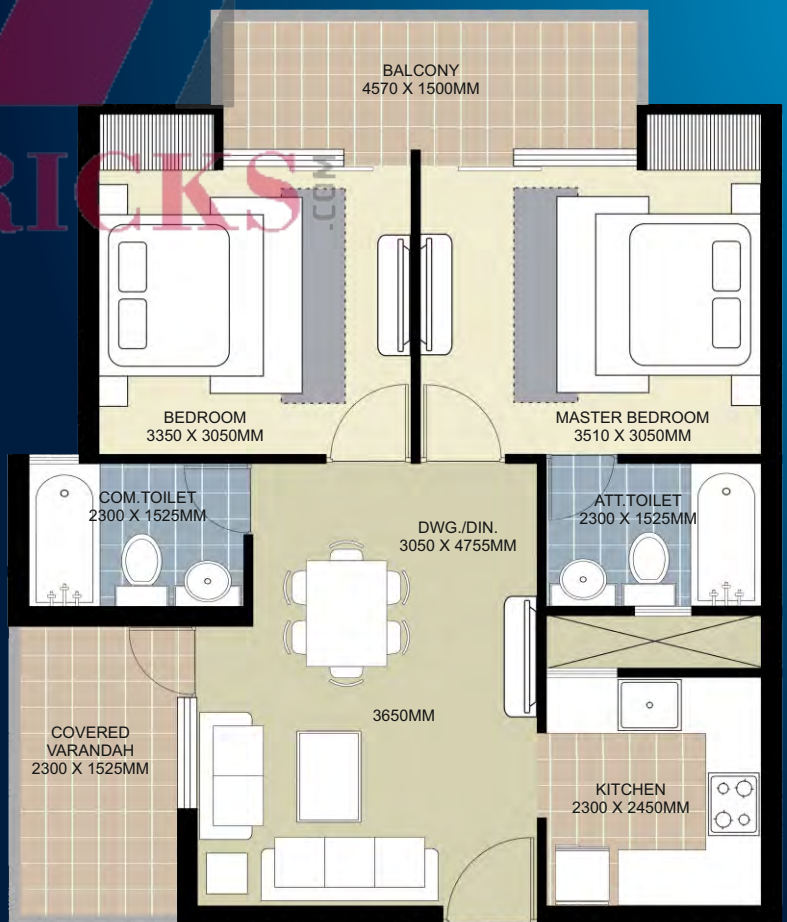






## Floor Plan

- 1 BHK**  
**Super Area: 720 sq.ft.**  
 1 Bedroom  
 • Drawing/Dining  
 • Kitchen  
 • 1 Toilet  
 • Balconies



## Floor Plan

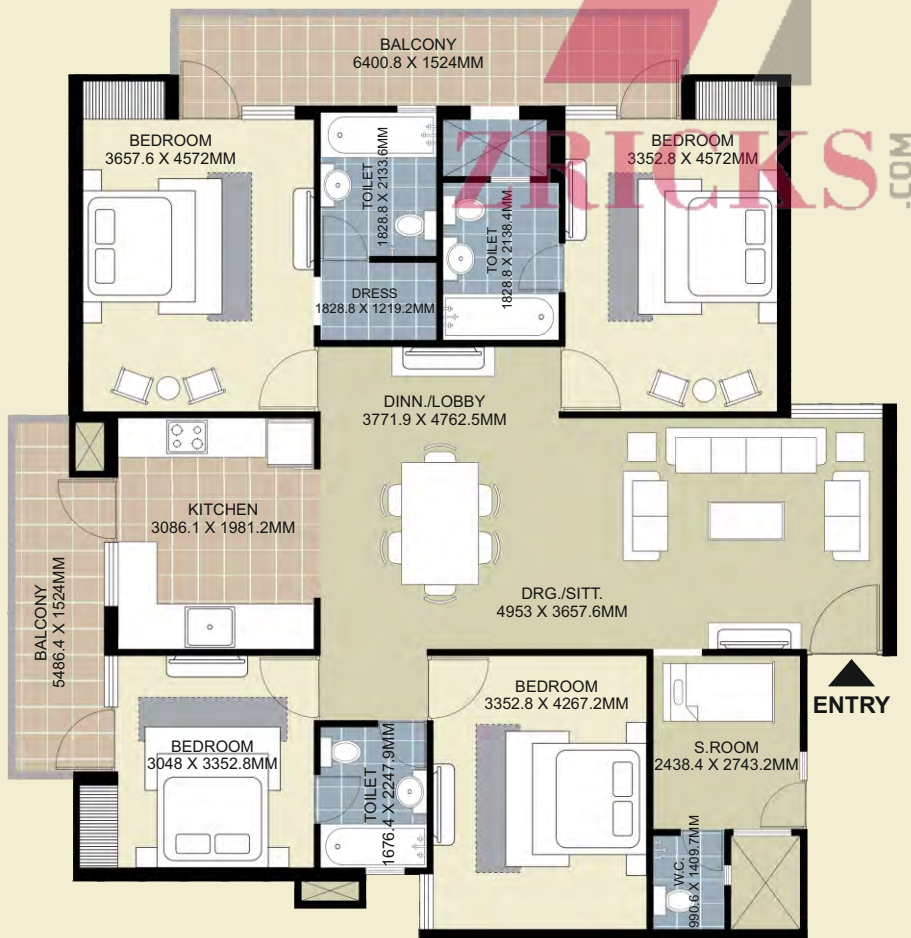
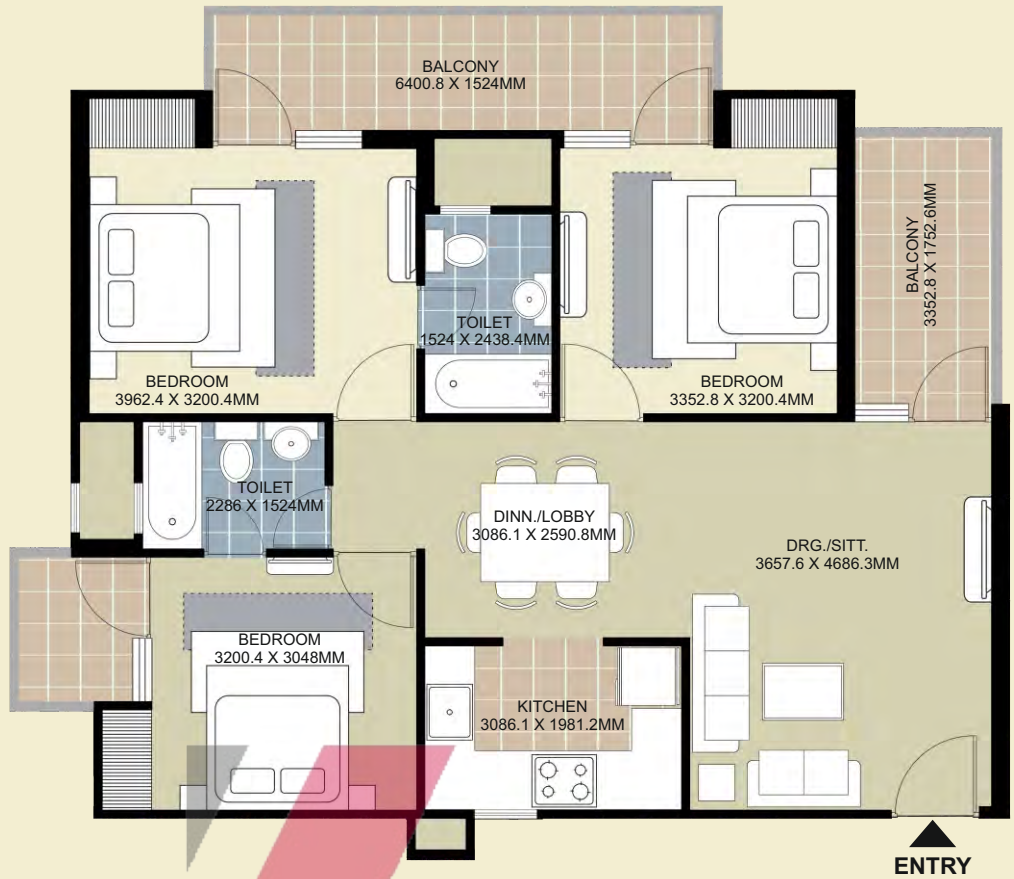
- 2 BHK**  
**Super Area: 999 sq. ft.**  
 • 2 Bedrooms  
 • Drawing/Dining  
 • Kitchen  
 • 2 Toilets  
 • Balconies

## Floor Plan

**3 BHK**

**Super Area: 1395 sq. ft.**

- 3 Bedrooms
- Drawing/Dining
- Kitchen
- 2 Toilets
- Balconies



## Floor Plan

**4 BHK**

**Super Area: 2520 sq. ft.**

- 4 Bedrooms
- Drawing/Dining
- Kitchen
- 4 Toilets
- Servant Room
- Balconies



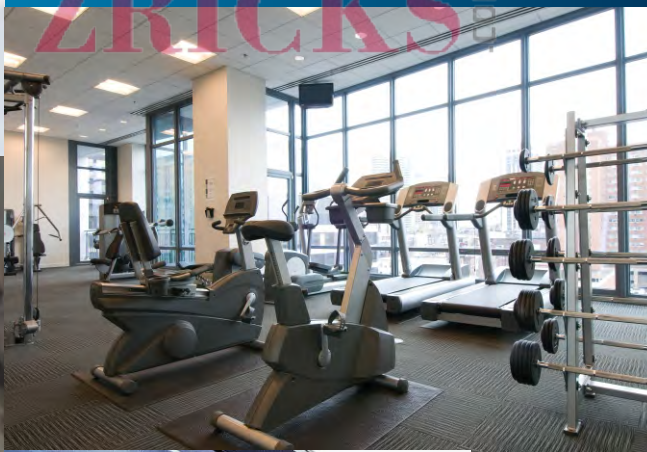
## Highlights of King's Court

- Club with a range of social, sports and business facilities
- SPA and sauna bath • Fully equipped Gym with Cardio & Strength training
- Swimming pool with exclusive kids' pool • Jogging tracks • State-of-the-art convention centre in the club • 24x7 CCTV • Hi-tech security with video phone in fully gated community • Dedicated kids' play zone • Vaastu compliant construction • RO water • Earthquake resistant structure • International standard bath and electrical fitments • Wi-fi enabled compound • Piped gas connections • Seasoned hardwood frame with designer main door
- Branded modular switches. • 24x7 power backup

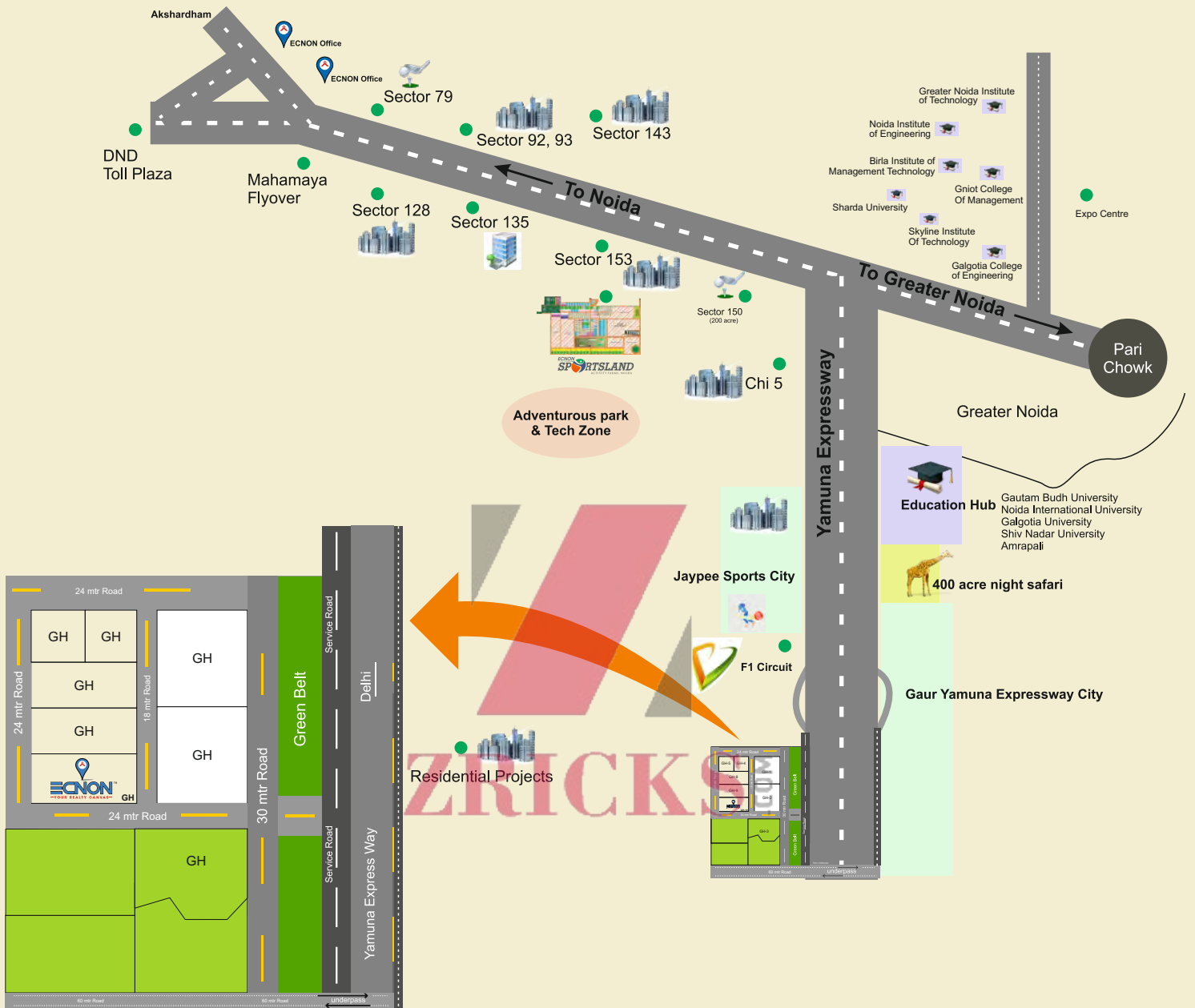


## Unique features

- Doctor on call • Solar lights • Maids and house help services on call
- ATM on campus • Garbage disposable chute • Fully furnished apartments
- Car wash • Library • Laundromats • Specially designed entrance lobby for elders & physically challenged



In the interest of maintaining high standards, all floor plans, layout plans, areas, dimensions and specifications are indicative and are subject to change as decided by the company or by any competent authority. Soft furnishing, cupboards, kitchen cabinets, furniture and gadgets are not part of the offering.



- 10 min from Zero point Gr. Noida
- 7 min from Night Safari\*
- 5 min from F1 Circuit
- 10 min from Education hub
- 30 min from Mahamaya
- Map is not to scale

**All Cheques/DDs to be made in favour of "ECNON Residency Buildcon Pvt. Ltd."**



**ECNON GROUP**

**Delhi:** 129, DLF Galleria Mall, District Centre, Mayur Vihar Phase-1, Delhi-110091

**Noida:** G-22, Near Rajnigandha Chowk, Sector-3, Noida-201301

**Call: 8010 909 909 | www.ecnongroup.com**