

CHERISH THE TASTE  
OF OPULENCE

G A L A X Y  
—  —  
**royale**

2/3 BHK LUXURY HOMES • GR. NOIDA (WEST)



ZRICKS.COM





# GAUR CITY-2

Get used to more

Gaursons and Saviour Builders is all set to create history in Noida Extension, where they are coming up with a landmark township, Gaur City. With a potent to become benchmark for all future real estate developments, Gaur City, spread over 125 acres, is a fine amalgam of high living ensconced not only by the greenery but all the modern amenities such as multiplex, stadium, swimming pool, hotel, hospital and schools among others.

With the incomparable features of Gaur City, the second phase (Gaur City-2) will be an enviable living destination for those desirous of an ultra modern lifestyle. So don't resist the temptation. Give in.



#### ongoing projects

 <p>GALAXY NORTH AVENUE 2/3/4 BHK HOMES, NOIDA EXTN.</p>	 <p>GALAXY NORTH AVENUE-II 2/3/4 BHK HOMES, NOIDA EXTN.</p>	 <p>GALAXY VEGA 2/3 BHK HOMES, GR. NOIDA (WEST)</p>	 <p>HIGHEND PARADISE 2, 3 &amp; 4 BHK Apartments at Rajnagar Extn., Ghaziabad</p>	 <p>galaxy plaza at Gaur City, Greater Noida West</p>
---	--	---	--	--

#### upcoming projects

Call For Best Rate : 9560357700 , 9212138889



# *rich home at a rich address*

Hard work makes dreams come true and this fact is quite evident with the success story of Galaxy Group. Since its inception the Group has built strong and gracious buildings loaded with contemporary luxuries which have brought remarkable change in the lifestyle of thousands. The Group has a dedicated team of real estate experts who work hard every day to complete each job with quality workmanship and assist



clients in making their dreams turn into a reality. We have the instinct to think differently and constructing innovatively as a beautiful home is all we need to lead a desirable life.

After the overwhelming response of its former projects, namely Galaxy North Avenue, Galaxy North Avenue 2 and Galaxy Vega, the Galaxy Group is coming up with a fourth project -Galaxy Royale, especially for those who don't compromise with life. Galaxy Royale rests in the mega township of Gaur City-2, the most sought after location for your home. Homes at Galaxy Royale offer 2 and 3 Bedroom luxury apartments. And you get all this at an amazingly affordable price and a convenient location!



G A L A X Y  
*royale*

2/3 BHK LUXURY HOMES • GR. NOIDA (WEST)

# *rich conveniences*

- Firm Price – no escalation.
- Certified earthquake resistant structure as per IS Codes of Practice.
- Complete township loaded with all amenities and facilities.
- Separate lift lobby in each block on every floor.
- Lifts by OTIS/KONE/JOHNSON or equivalent in each block.



- Housing loan facility available from the leading financial institutions.
- Covered and open reserved car parking within the complex\*.
- Parks, children play area, landscaping within the complex.
- Approx. only 20% Covered area and 80% open space.
- Rain water harvesting.
- Plumbing done with CPVC pipes to avoid corrosion.
- Timely possession with penalty clause.
- Individual RO Unit for drinking water in each apartment.
- 100% power back-up\*.
- 24 Hour security with intercom facility.
- Adequate provision for fire fighting on each floor.
- Extra spacious room sizes, balconies and big Windows to ensure most comfortable living.

\*Conditions apply

**Call For Best Rate : 9560357700 , 9212138889**



# *rich amusement*



- Swimming pool with Deck
- Club with guest rooms
  - Gymnasium
  - Billiards Table
  - Table Tennis
  - Card Table
- Half Basketball Court over club terrace
- Indoor Games



G A L A X Y  
**royale**

2/3 BHK LUXURY HOMES • GR. NOIDA (WEST)

# *rich details*

## **STRUCTURE**

- Earthquake resistant RCC framed structure certified by IIT.

## **EXTERNAL FINISH**

- Excellent weather proof finish in pleasant shades.

## **FLOORING**

- Vitrified tiles in Drawing Room, Kitchen & Bedrooms • Wooden shaded vitrified tiles in Master Bedroom • Ceramic tiles in Bathrooms and Balconies.

## **P.O.P WORK**

- Pop work of Drawing & Dining Room.

## **WALLS & CEILING FINISH**

- Finished walls & ceiling with OBD in pleasing shades. • One wall in Master Bedroom duly textured finished.

## **KITCHEN**

- Granite working top with stainless steel sink • 2'-0" dado above the working top and 5'-0" from the floor level on remaining walls by ceramic tiles. • Individual RO unit for drinking water.

## **TOILETS**

- Provision for hot and cold water system • Ceramic tiles on walls up to door level.



- White Sanitary ware with EWC, Washbasin and CP fittings in all toilets.

## **DOORS & WINDOWS**

- Outer doors & windows aluminium powder coated/UPVC • Internal door-frames of Maranti or equivalent wood • Internal door made of painted flush shutters • Main entry door frame of Maranti or equivalent wood with skin moulded door shutter • Good quality hardware fittings.

## **ELECTRICAL**

- Copper wire in PVC conduits with MCB supported circuits and adequate number of points and light points in ceiling • Ceiling Fan in Bedrooms, Drawing & Dining Room. • Designer Light Fixtures in all Bedrooms, Drawing & Dining Room.

## **WOOD WORK**

- Wardrobe in Master Bedroom • Modular Wooden Cabinets below the working top in Kitchen.

## **WATER SUPPLY**

- Under ground and overhead water tanks with pumps for 24 hrs uninterrupted water supply.

## **TV & TELEPHONE**

- One landline connection having intercom facilities • Provision for DTH connection.

- The colours and design of the tiles, motifs and electrical fittings can be changed without any prior notice
- Variation in the colour and size of vitrified tiles/granite may occur
- Variation in colour in mica and design of the wooden work may occur
- Area in all categories of apartments may vary up to +- 3% without any change in cost
- However, in case the variation is beyond +-3%, pro-rate changes are applicable

**Call For Best Rate : 9560357700 , 9212138889**





GALAXY  
**royale**  
2/3 BHK LUXURY HOMES • GR. NOIDA (WEST)

GALAXY  
**NORTH AVENUE-II**  
2/3/4 BHK HOMES, NOIDA EXTN.

GALAXY  
**NORTH AVENUE**  
2/3/4 BHK HOMES, NOIDA EXTN.



- CLUB
- MALLS
- OFFICES
- PETROL PUMP
- CONVENIENCE SHOPPING
- MEGA SPORTS COMPLEX
- NURSERY & CRECHE
- MULTILEVEL PARKING
- SCHOOLS
- HOTEL
- HOSPITAL
- SERVICE APARTMENTS
- PARK
- MULTIPLEX

**locational advantage**

- 2 Mins. drive from NH-24 • 3 Mins. drive from FNG corridor • 5 Mins. Drive from Sector 119 and Sector 120 • 7 Mins. Drive from Sector 50 Sai Mandir • 10 Mins. Drive from Fortis Hospital • 10 Mins. Drive from Sector 32 Metro Station • 20 Mins. Drive from Sector 18 Market • Nearby Proposed Metro Station

All Specification, designs, layout, images, conditions are only indicative and some of these can be changed at the discretion of the builder, these are purely conceptual and constitute no legal offerings. 1sqm = 10.764 sq.ft.





Entry



3BHK+2Toilet  
 Super Area: 1345.00 Sq. Ft.

All Specification, designs, layout, images, conditions are only indicative and some of these can be changed at the discretion of the builder, these are purely conceptual and constitute no legal offerings. 1sqm = 10.764 sq.ft.



Type-2



2BHK+2Toilet+Study  
Super Area: 1195.00 Sq. Ft.



All Specification, designs, layout, images, conditions are only indicative and some of these can be changed at the discretion of the builder, these are purely conceptual and constitute no legal offerings. 1sqm = 10.764 sq.ft.

Call For Best Rate : 9560357700 , 9212138889





Entry



2BHK+2Toilet+Store  
 Super Area: 1060.00 Sq. Ft.

All Specification, designs, layout, images, conditions are only indicative and some of these can be changed at the discretion of the builder, these are purely conceptual and constitute no legal offerings. 1sqm = 10.764 sq.ft.



All Specification, designs, layout, images, conditions are only indicative and some of these can be changed at the discretion of the builder, these are purely conceptual and constitute no legal offerings. 1sqm = 10.764 sq.ft.



1. ENTRANCE COBBLED PLAZA
2. RAMP
3. CAR PARKING
4. FEATURE PAVING
5. 6.00 MT WIDE DRIVEWAY
6. LAWN
7. POOL DECK
8. SWIMMING POOL
9. CHILDREN'S PLAY AREA
10. GAZEBO
11. WATER FEATURE
12. STEPPING STONE
13. BADMINTON COURT
14. HALF BASKET BALL COURT OVER CLUB TERRACE
15. ROUNDABOUT

- 3BHK+2 TOILET (1345.00SQ.FT.)
- 2BHK+2 TOILET + STUDY (1195.00SQ.FT.)
- 2BHK+2 TOILET + STORE (1060.00SQ.FT.)



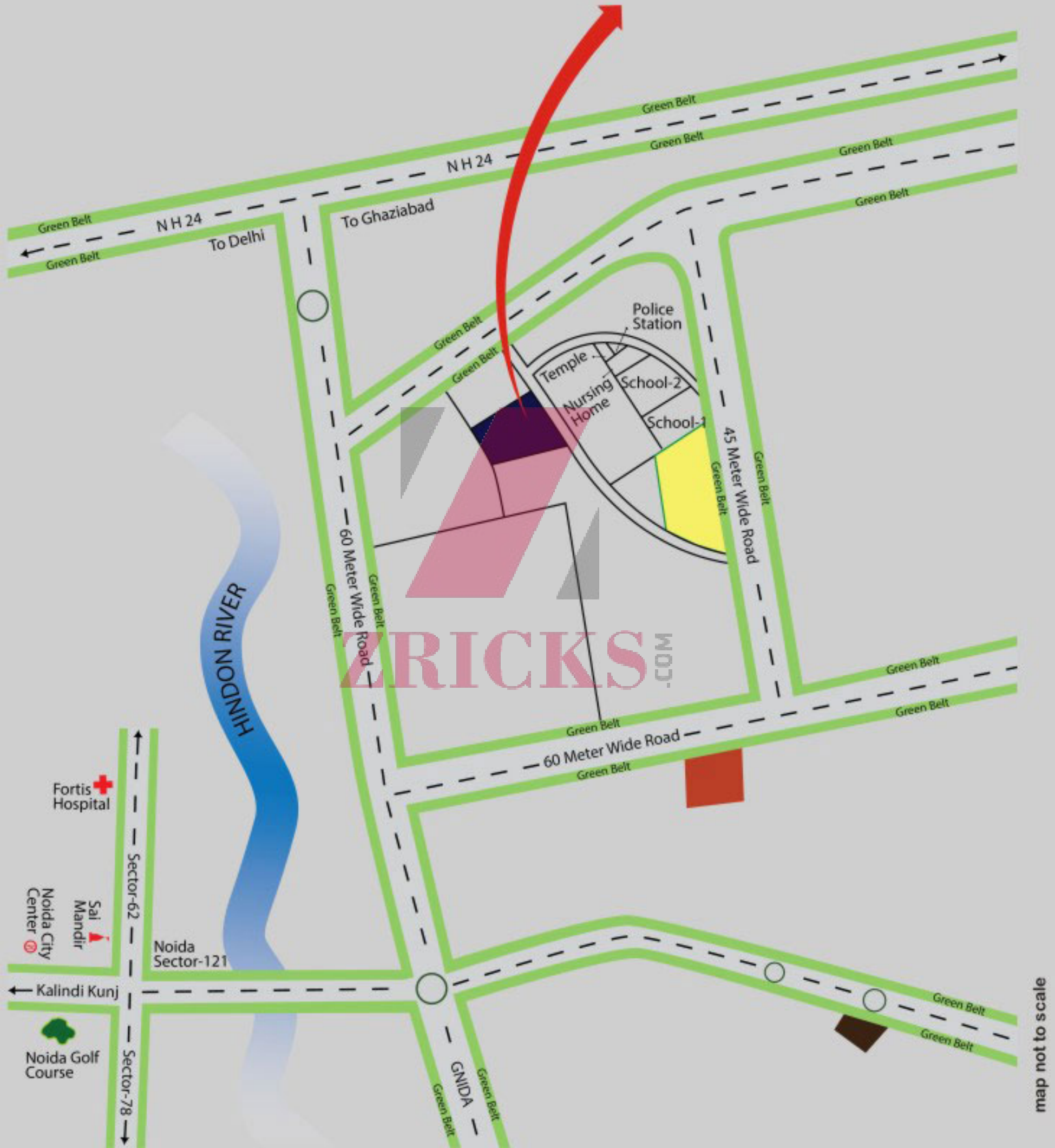
24 MT. WIDE ROAD



# ROAD MAP

GALAXY  
**royale**

2/3 BHK LUXURY HOMES • GR. NOIDA (WEST)



Site Off.: Plot No.GC-3J/GH-3, Gaur City-2, Sector-16C, GNIDA



Call For Best Rate : 9560357700 , 9212138889