

The taste of
LUXURIOUS
LIVING is now
SPREADING
its wings.



IN ASSOCIATION WITH:



J-25 A, Sector-18, Noida, U.P., Tel : 9717860059

ZRICKS .COM





Just one object doesn't define
Luxury.
Presenting
Beetle Suites
luxurious studio apartments at affordable prices.

Beetle
SUITES

The pleasures of luxury living
are being redefined
in the heart of NCR.





ZEPCKS.COM

If you ever thought that luxury couldn't come at affordable price, then think again. At Beetle Suites, we are offering world-class suites at an exciting price. So that, when somebody comes to your suite, it's not just one object that showcases your love for luxury but the entire suite.



Rooftop Swimming Pool: Experience life in its most luxurious form

In tune with changing time Beetle Suites have acquired an International look. These suites will forever redefine luxury living, set new standards and raise the bar for a true International living with its rooftop Swimming Pool. This urban oasis is the perfect place for the fun & relaxation both. Whether you plan to exercise, or merely relax and bask in the sun on the pool deck, its rooftop location offers spectacular views.

ZRICKS

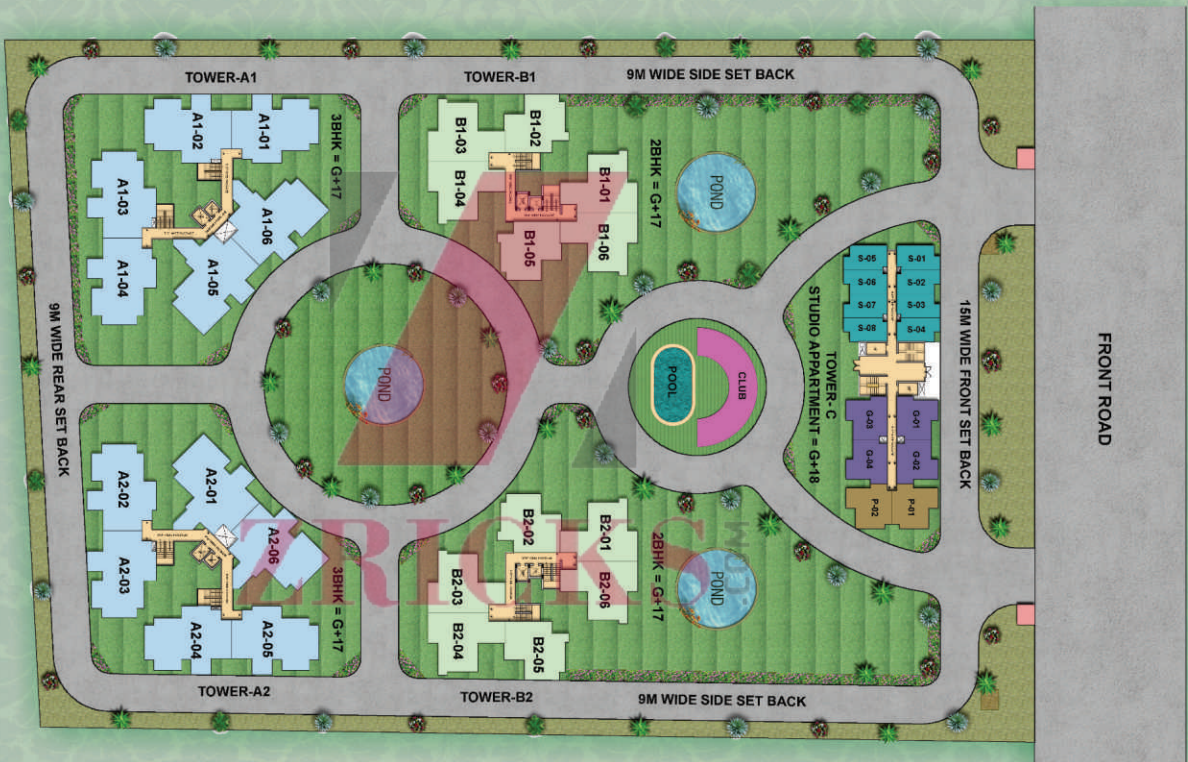


Stimulating Environment



The Beetle Suites provide residents with the perfect setting for a recreational & leisure pursuits. You can unwind at the exclusive Clubhouse lounge accompanied by a cup of coffee or a neighborhood friend. Be it energizing workout at the gym or relaxation for your mind, you get it all here within the gated community. So choice is yours!

Site Layout



Master Plan Layout



Platinum Suite

S. AREA 615 sq.ft.



S. AREA 575 sq.ft.

Gold Suite



Silver Suite

S. AREA 370 sq.ft.

Features



- ◆ Fully Equipped Gymnasium
- ◆ Swimming Pool
- ◆ Spa Centre
- ◆ Power Yoga Centre
- ◆ Café Lounge
- ◆ Exclusive Residents Club Lounge
- ◆ Laundry And Dry Cleaning Service
- ◆ Concierge Service
- ◆ Housekeeping Service
- ◆ Broadband Internet Connections
- ◆ Wi-Fi Connectivity
- ◆ 24-Hour Security and Closed-Circuit Monitoring

Specifications

SIZE 615/575 sq.ft.

- ❖ 2 AIR CONDITIONERS
- ❖ MINI REFRIGERATOR
- ❖ 2 LCDs WITH CABLE CONNECTION
- ❖ DVD PLAYER
- ❖ EPABX SYSTEM
- ❖ RO IN THE KITCHEN
- ❖ EQUIPPED KITCHEN
- ❖ HOT PLATE(INDUCTION COOKER)
- ❖ JUICER MIXER
- ❖ DOUBLE BED WITH MATTRESSES AND PILLOW

- ❖ TOASTER
- ❖ CURTAIN WITH CURTAIN RODS
- ❖ TOWEL RACK IN THE BATHROOM
- ❖ CENTRE TABLE
- ❖ GEYSER
- ❖ MICROWAVE
- ❖ 4 SEATER SOFA WITH CORNER TABLE
- ❖ WORKSTATION WITH CHAIR
- ❖ 4 SEATER DINNING
- ❖ CONSOLE

- ❖ AIR CONDITIONER
- ❖ MINI REFRIGERATOR
- ❖ LCD WITH CABLE CONNECTION
- ❖ DVD PLAYER
- ❖ EPABX SYSTEM
- ❖ RO IN THE KITCHEN
- ❖ HOT PLATE(INDUCTION COOKER)
- ❖ JUICER MIXER
- ❖ DOUBLE BED WITH MATTRESSES AND PILLOW

SIZE 370 sq.ft.

Specifications

- ❖ TOASTER
- ❖ CURTAIN WITH CURTAIN RODS
- ❖ TOWEL RACK IN THE BATHROOM
- ❖ GEYSER
- ❖ MICROWAVE
- ❖ WORKSTATION WITH CHAIR

Living Room/dinning room

- ❖ **Floor** : Vitrified Tiles/Katni/Marble Floor
- ❖ **External Door and Window** : First Class Sal Wood Frame with Skin Molded Door Shutter
- ❖ **Fixture and Fitting** : Chandelier, Designer Lights, Fittings & Decorative Fan
- ❖ **Walls** : POP Finish with Plastic Emulsion
- ❖ **Internal Door** : First Class Sal Wood Frame with Skin Molded Door Shutter

Bedroom

- ❖ **Floor** : Wooden Laminated/Vitrified Tiles
- ❖ **External Door and Window** : Powder Coated Aluminium Frame Windows Along with Reflective Glass and Aluminium Door
- ❖ **Fixture and Fitting** : Designer Lights, Fittings & Decorative Fan
- ❖ **Wood Work** : Wooden Cupboard

Location Plan

