



Perfect venue for Retail, Entertainment & Office spaces ...



ZRICKS.COM

PARK STREET

RETAIL ♦ MULTIPLEX ♦ SERVICE APARTMENTS ♦ OFFICE SUITES ♦ FOOD COURT
NH-1, SONEPAT



LONGEST SHOPPING cum MULTIPLEX of SONEPAT

Disclaimer : All visual representations shown in this brochure are purely conceptual. All building plans, specifications, layout plans etc. are tentative and subject to variation and remodification by the company or the competent authorities sanctioning plans.



TDI Infrastructure Ltd.

UG Floor, Vandana Building, 11, Tolstoy Marg, Connaught Place, New Delhi - 110001
www.tdigroup.net

Toll free : 1800 102 6252 SMS 'TDI' to 56161

PARK STREET

RETAIL ♦ MULTIPLEX ♦ SERVICE APARTMENTS ♦ OFFICE SUITES ♦ FOOD COURT

A 800 ft. wide frontage on NH-1 for a wide spectrum of business opportunities



Welcome to the NEW AGE RETAIL DESTINATION

TDI PARK STREET is a magnificent creation that will be the premier lifestyle destination for shopping, entertainment, dining out and the pride of corporate presence.

PARK STREET

RETAIL • MULTIPLEX • SERVICE APARTMENTS • OFFICE SUITES • FOOD COURT
NH-1, SONEPAT

25 minutes drive from Delhi

Easy access, 0 mtr. from Sonapat through National Highway

Opposite popular Amusement Park

Densely populated Sectors 12, 14, 15, Sonapat & many residential townships nearby

Longest Mall cum Multiplex of Sonapat

3 screen multiplex, Food court and Fine dining restaurants

Office suites of various sizes

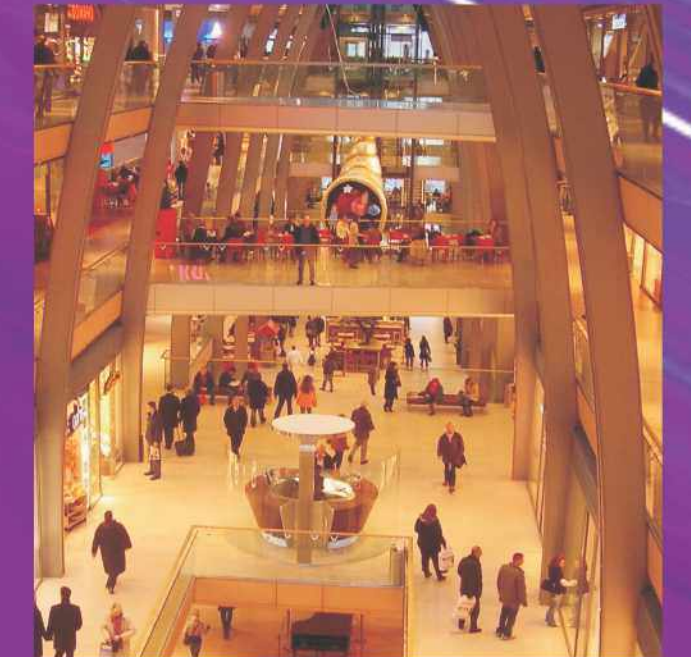
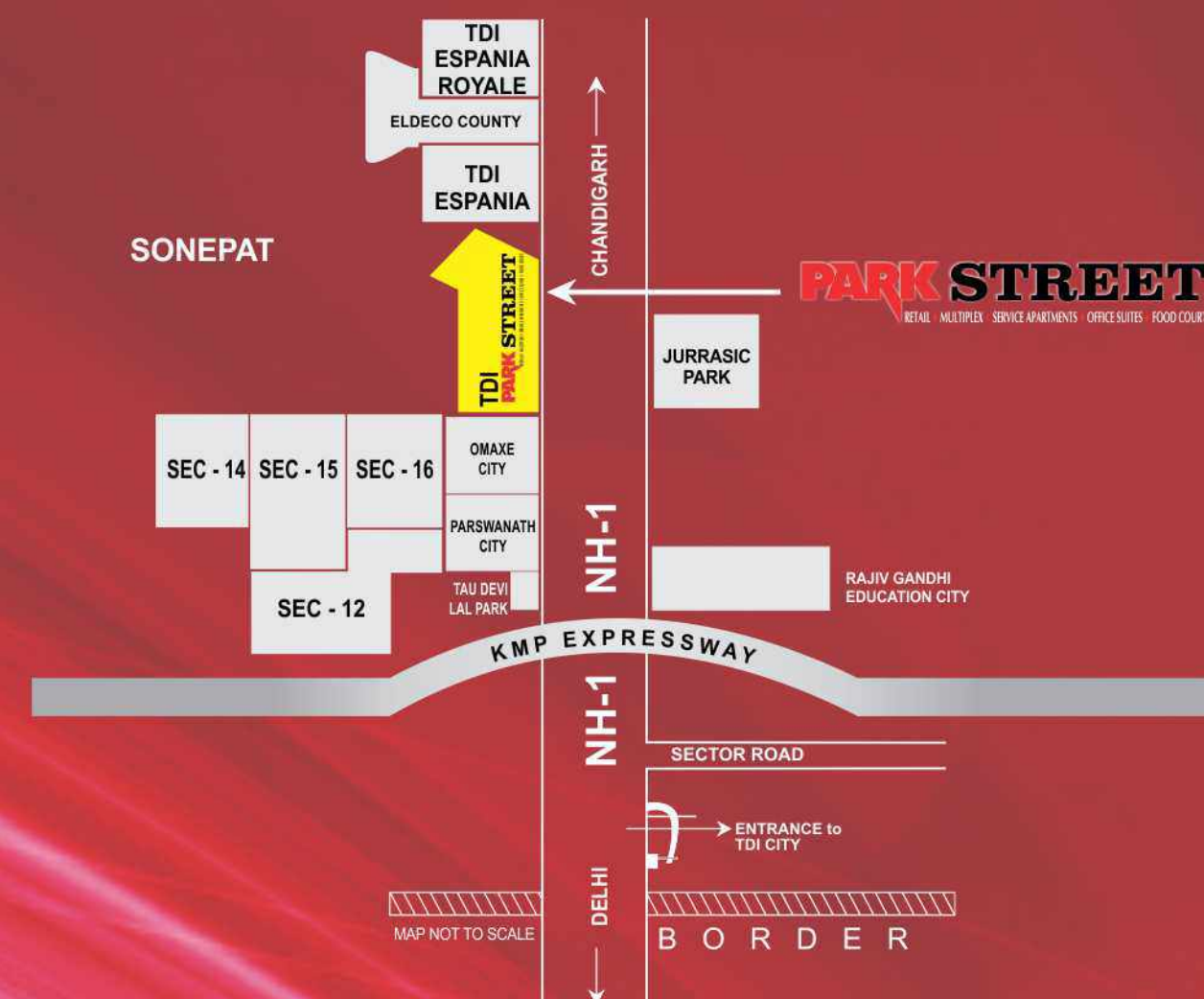
Service Apartments managed by renowned Group

Modern escalators and capsule lifts

Children Game Arena in the Atrium

Beautiful landscaping with grand front piazza and water features

Ample surface & basement parking



RETAIL



With changing times, the meaning of Retail is no more just selling. It has evolved as an inseparable part of modern lifestyle.

At TDI Park Street, Retail takes an all new dimension by emerging beyond being just a commercial activity, into a lifestyle statement itself. Customers here, do not buy needs but experience their dreams come true in an environment specifically created for the purpose.

Where people shop till they drop





MULTIPLEX

Where entertainment is a true blockbuster

ZRICKS MOD.

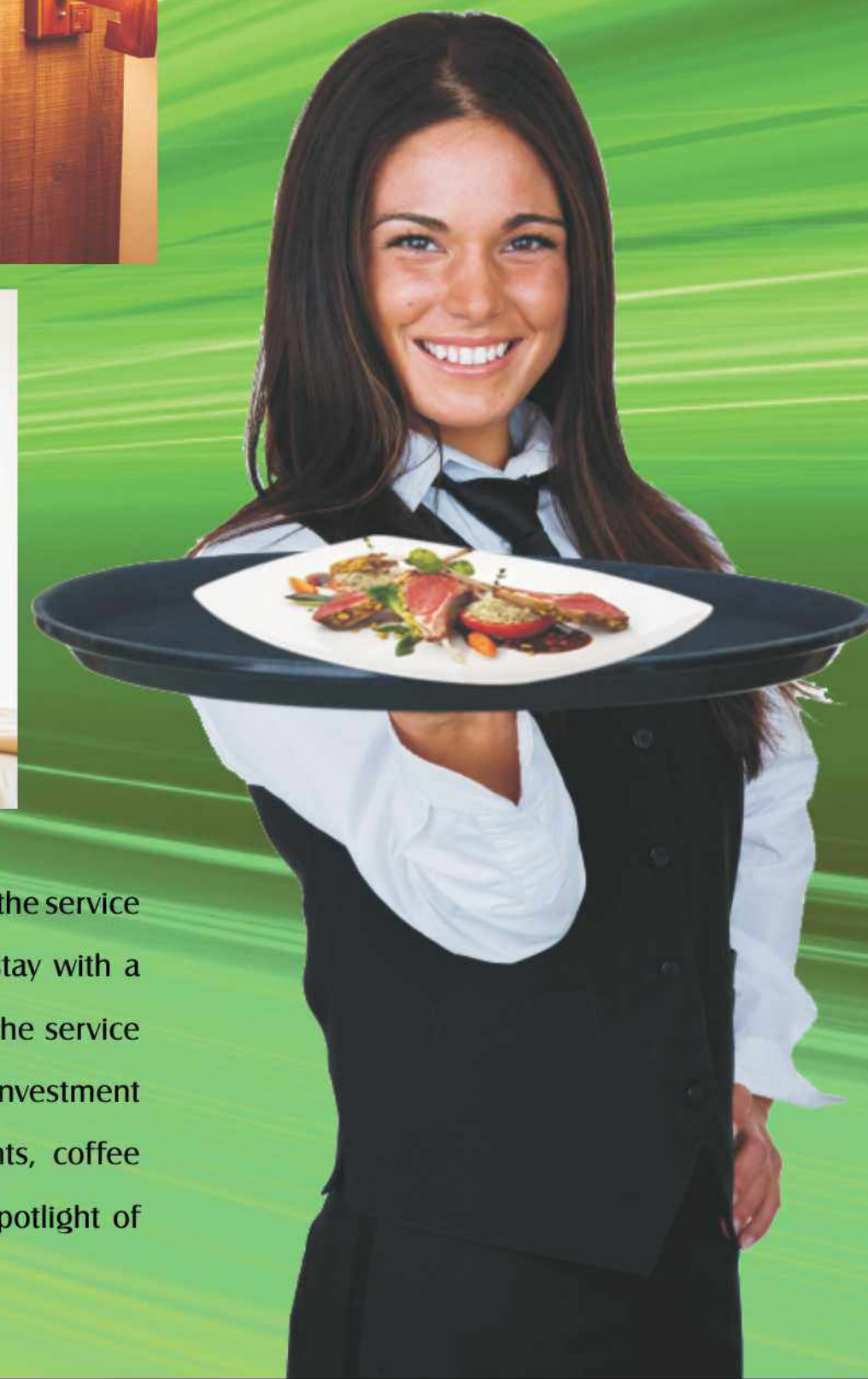
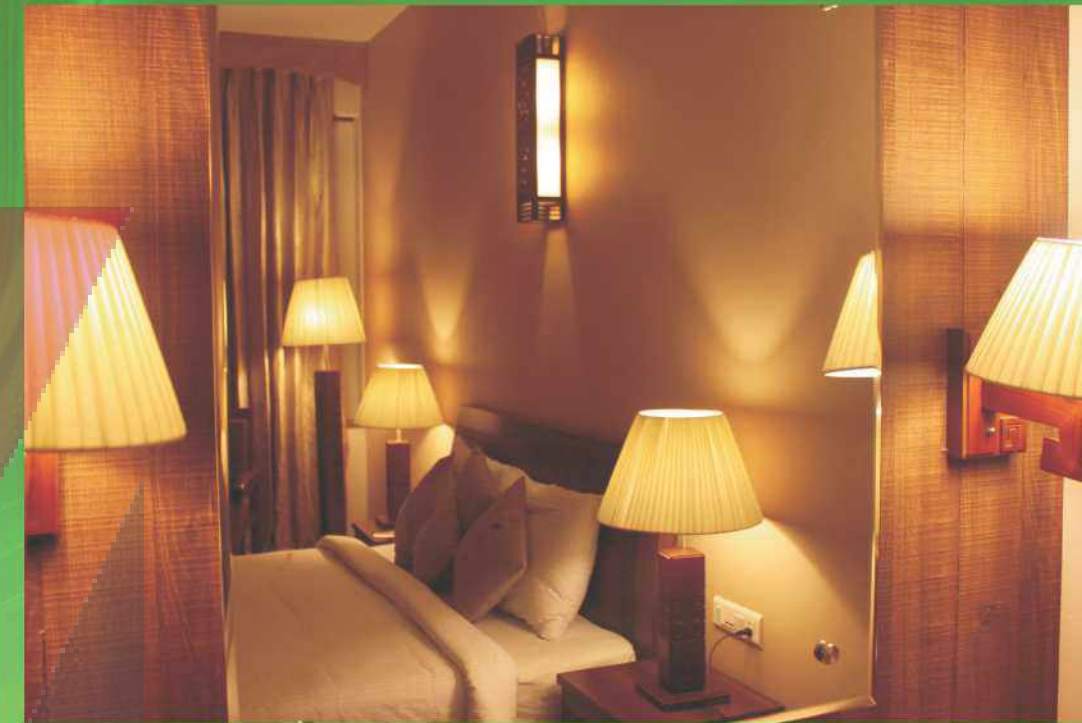
3 screen hi-tech multiplex with Dolby Digital surround sound and club class lounge experience will change the movie going experience in the region. Gear up for a complete new level of cine-magic.





SERVICE APARTMENTS

Where its always a home away from home



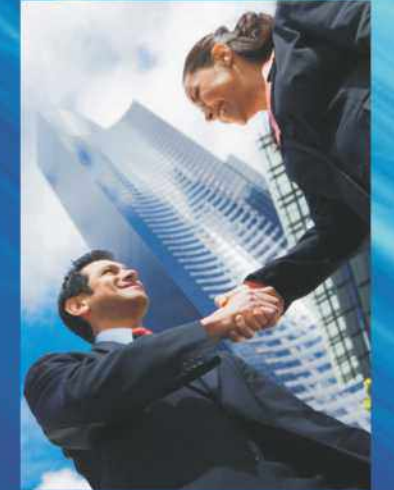
ZRICKS.COM

To cater to the needs of business executives on the move, the service apartments provide the solace and comfort of home stay with a professional touch. Managed by the renowned Group, the service apartments at Park Street are hot revenue generating investment propositions. Coupled with all comforts like restaurants, coffee shops, gymnasium, laundry services, its sure to be a spotlight of comfort and luxury.



OFFICE SUITES

Where work is a pleasure



TDI PARK STREET, the ideal combination of location, features and amenities for modern day offices. The perfect destination is not just work spaces but a holistic ambience for New Age Business. The floor plans are carefully designed in different sizes for all business needs including personal offices.





FOOD COURT

FINE DINING RESTAURANTS

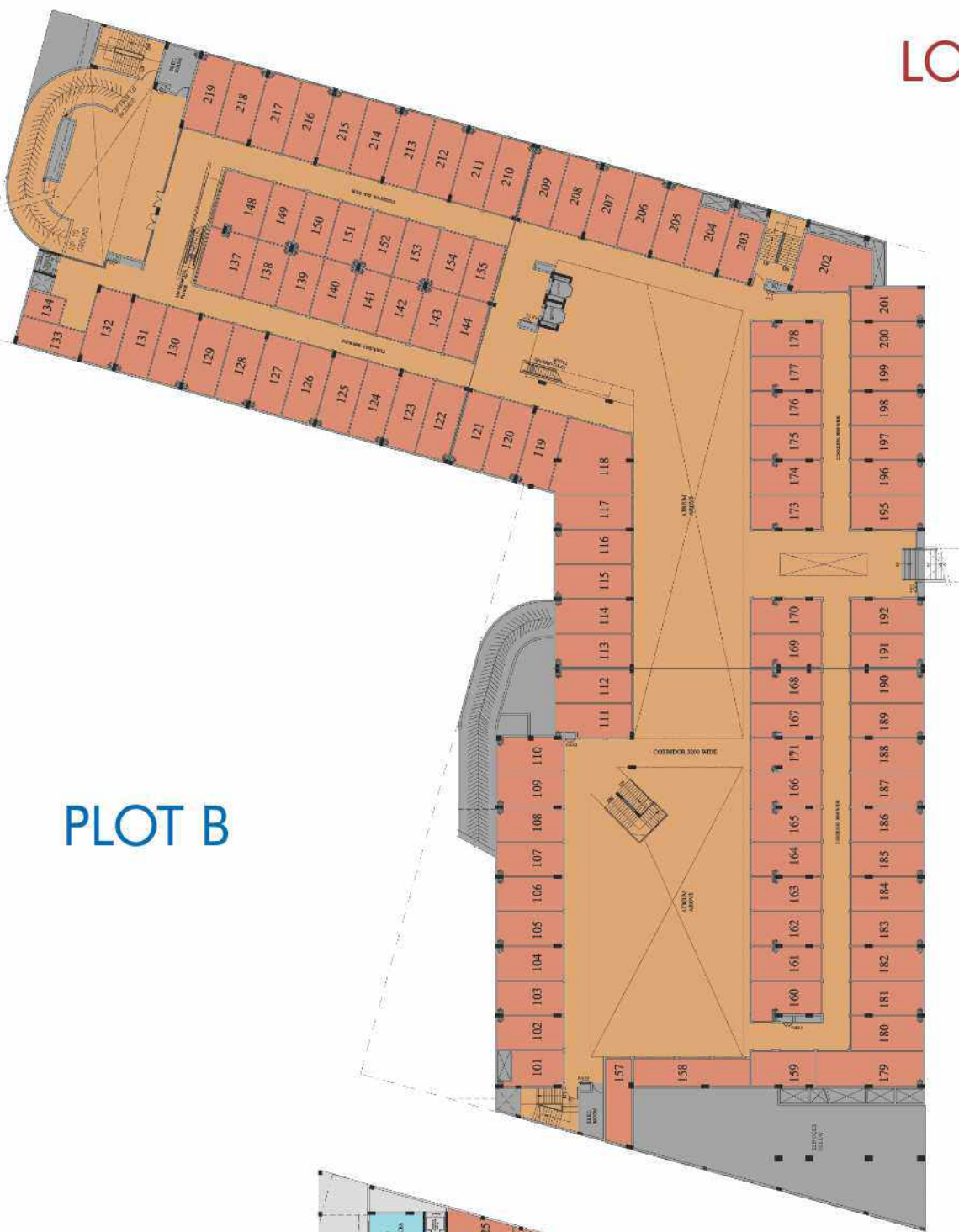
Where food is a lip-smacking affair

Experience a platter of food from world over. Be it Chinese, Thai, Mexican, Italian or simply the American fast food fare, the large Food Court in a vibrant fun filled ambience and the up-market restaurants, that will change the way you ever dined out.

ZRICKS.COM



LOWER GROUND FLOOR



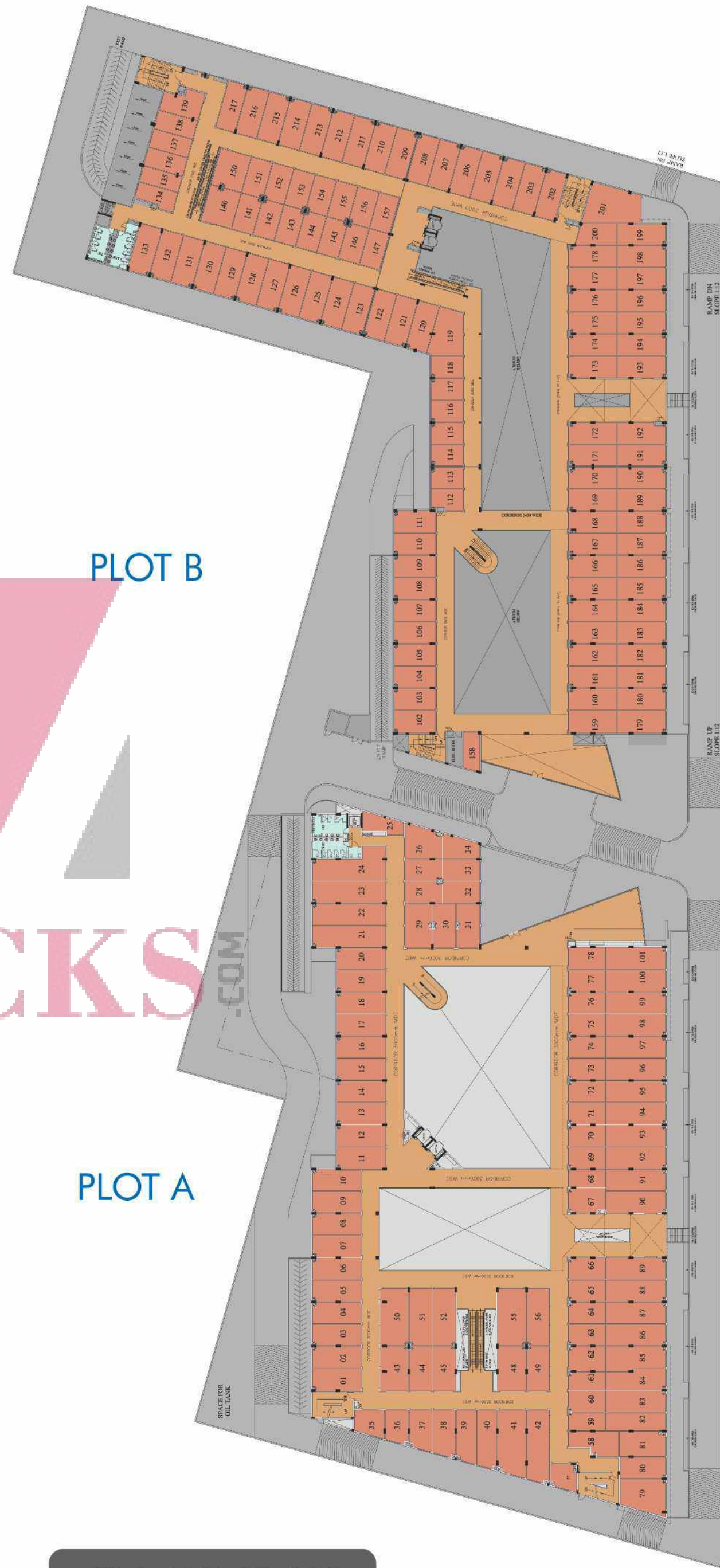
PLOT B

PLOT A			PLOT B		
Sl. No.	Shop No.	Super Area (Sq.ft.)	Sl. No.	Shop No.	Super Area (Sq.ft.)
1	01	809.89	101	101	458.83
2	02	1,014.17	102	102	516.16
3	03	879.11	103	103	516.16
4	04	879.11	104	104	516.16
5	05	879.11	105	105	516.16
6	06	879.11	106	106	516.16
7	07	879.11	107	107	516.16
8	08	879.11	108	108	516.16
9	09	879.11	109	109	516.16
10	10	892.92	110	110	549.88
11	11	594.21	111	111	603.88
12	12	594.21	112	112	588.59
13	13	594.21	113	113	588.59
14	14	594.21	114	114	594.21
15	15	594.21	115	115	594.05
16	16	594.21	116	116	594.21
17	17	594.21	117	117	594.05
18	18	594.21	118	118	1,157.10
19	19	594.21	119	119	589.23
20	20	594.21	120	120	589.39
21	21	893.24	121	121	583.93
22	22	879.11	122	122	583.93
23	23	879.11	123	123	589.39
24	24	1,433.97	124	124	589.39
25	25	417.07	125	125	589.39
26	26	582.32	126	126	589.39
27	27	415.30	127	127	589.39
28	28	333.88	128	128	589.39
29	29	358.93	129	129	589.39
30	30	384.63	130	130	589.39
31	31	357.81	131	131	589.39
32	32	414.82	132	132	630.34
33	33	559.52	133	133	436.02
34	34	455.45	134	134	239.45
35	35	439.88	135	135	651.38
36	36	515.68	136	136	447.74
37	37	594.05	137	39	447.74
38	38	590.19	138	140	447.74
39	39	636.93	139	141	447.74
40	40	1,022.68	140	142	447.74
41	41	917.49	141	143	447.74
42	42	1,045.33	142	144	443.57
43	43	203.48	143	148	651.38
44	44	399.08	144	149	447.74
45	45	350.74	145	150	447.74
46	46	750.95	146	151	447.74
47	47	642.39	147	152	447.74
48	48	546.99	148	153	447.74
49	49	301.75	149	154	447.74
50	50	788.37	150	155	443.57
51	51	606.90	151	157	569.80
52	52	1,018.35	152	158	783.55
53	53	871.40	153	159	539.28
54	54	1,069.25	154	160	578.15
55	55	1,014.81	155	161	546.03
56	56	557.59	156	162	546.03
57	57	709.20	157	163	546.03
58	58	542.34	158	164	546.03
59	59	542.34	159	165	546.03
60	60	542.34	160	166	546.03
61	61	572.37	161	167	546.03
62	62	572.37	162	168	540.89
63	63	546.03	163	169	540.89
64	64	546.03	164	170	573.33
65	65	546.03	165	171	546.03
66	66	546.03	166	173	573.33
67	67	546.03	167	174	546.03
68	68	546.03	168	175	546.03
69	69	546.03	169	176	546.03
70	70	652.51	170	177	546.03
71	71	468.62	171	178	573.33
72	72	497.21	172	179	879.11
73	73	1,274.02	173	180	572.69
74	74	648.49	174	181	560.80
75	75	472.48	175	182	560.80
76	76	560.48	176	183	560.80
77	77	474.72	177	184	560.80
78	78	646.88	178	185	560.80
79	79	560.80	179	186	560.80
80	80	560.80	180	187	560.80
81	81	560.80	181	188	560.80
82	82	560.80	182	189	560.80
83	83	560.80	183	190	555.51
84	84	560.80	184	191	555.51
85	85	560.80	185	192	558.75
86	86	560.80	186	195	588.75
87	87	560.80	187	196	560.80
88	88	560.80	188	197	560.80
89	89	560.80	189	198	560.80
90	90	560.80	190	199	560.80
91	91	560.80	191	200	560.80
92	92	560.80	192	201	573.97
93	93	560.80	193	202	836.23
94	94	602.72	194	203	496.89
			195	204	496.89
			196	205	589.39
			197	206	589.39
			198	207	589.39
			199	208	589.39
			200	209	583.93
			201	210	583.93
			202	211	589.39
			203	212	589.39
			204	213	589.39
			205	214	589.39
			206	215	589.39
			207	216	589.39
			208	217	589.39
			209	218	589.39
			210	219	618.78

TENTATIVE AREAS

TENTATIVE AREAS

GROUND FLOOR

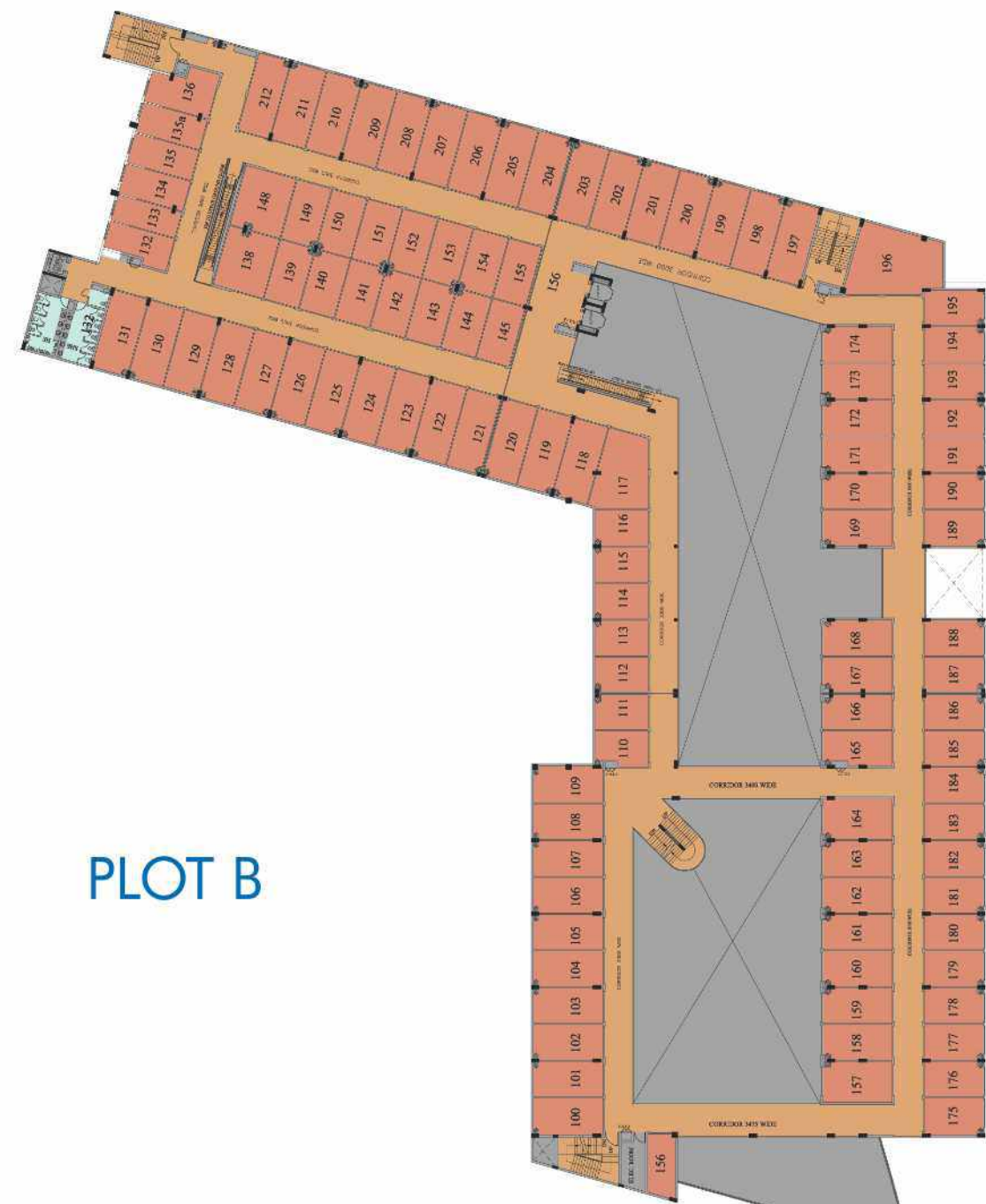


PLOT A

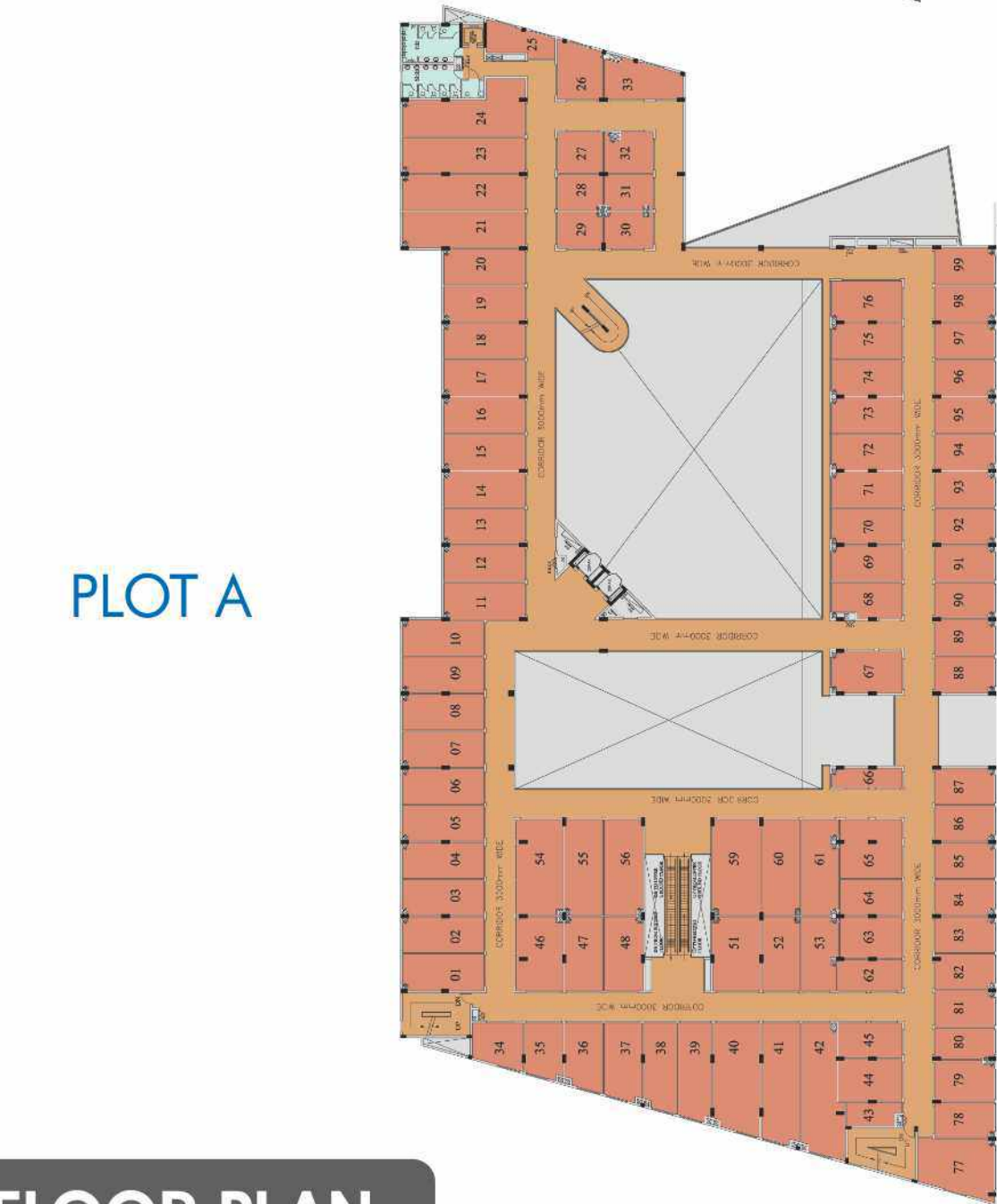
PLOT A			PLOT B		
Sl. No.	Shop No.	Super Area (Sq.ft.)	Sl. No.	Shop No.	Super Area (Sq.ft.)
1	01	639.02	102	102	564.16
2	02	594.53	103	103	516.16
3	03	594.53	104	104	516.16
4	04	594.53	105	105	516.16
5	05	594.53	106	106	516.16
6	06	594.53	107	107	516.16
7	07	594.53	108	108	516.16
8	08	594.53	109	109	516.16
9	09	594.53	110	110	516.16
10	10	597.74	111	111	549.88
11	11	619.42	112	112	401.01
12	12	594.21	113	113	397.64
13	13	594.21	114	114	397.64
14	14	594.21	115	115	401.49
15	15	594.21	116	116	401.49
16	16	594.21	117	117	401.49
17	17	594.21	118	118	401.49
18	18	594.21	119	119	619.42
19	19	594.21	120	120	764.60
20	20	594.21	121	121	589.39
21	21	594.21	122	122	589.39
22	22	594.21	123	123	583.93
23	23	893.24	124	124	589.39
24	24	1,096.72	125	125	589.39
25	25	417.07	126	126	589.39
26	26	655.24	127	127	589.39
27	27	449.67	128	128	589.39
28	28	449.67	129	129	589.39
29	29	693.14	130	130	589.39
30	30	566.43	131	131	589.39
31	31	606.41	132	132	589.39
32	32	449.67	133	133	633.56
33	33	449.67	134	134	423.82
34	34	441.64	135	135	372.75
35	35	455.61	136	136	429.44
36	36	441.80	137	137	429.44
37	37	513.43	138	138	429.44
38	38	594.21	139	139	550.37
39	39	590.19	140	140	651.38
40	40	652.83	141	141	447.74
41	41	1,022.68	142	142	447.74
42	42	934.35	143	143	447.74
43	43	717.07	144	144	447.74
44	44	566.43	145	145	447.74
45	45	593.08	146	146	447.74
46	46	593.08	147	147	443.57
47	47	583.13	148	148	651.38
48	48	593.08	149	149	447.74
49	49	725.74	150	150	447.74
50	50	759.95	151	151	447.74
51	51	932.43	152	152	447.74
52	52	747.10	153	153	447.74
53	53	386.72	154	154	447.74
54	54	607.38	155	155	443.57
55	55	376.12	156	156	405.99
56	56	446.62	157	157	631.63
57	57	377.88	158	158	577.51
58	58	515.20	159	159	577.51
59	59	446.62	160	160	577.51
60	60	446.62	161	161	577.51
61	61	446.62	162	162	577.51
62	62	446.62	163	163	577.51
63	63	519.37	164	164	577.51
64	64	379.49	165	165	588.59
65	65	446.62	166	166	566.43
66	66	446.62	167	167	577.51
67	67	446.62	168	168	572.05
68	68	446.62	169	169	572.05
69	69	446.62	170	170	606.41
70	70	446.62	171	171	606.41
71	71	446.62	172	172	606.41
72	72	446.62	173	173	577.51
73	73	446.62	174	174	577.51
74	74	446.62	175	175	577.51
75	75	446.62	176	176	577.51
76	76	446.62	177	177	577.51
77	77	446.62	178	178	577.51
78	78	480.02	179	179	631.63
79	79	836.55	180	180	577.51
80	80	560.80	181	181	577.51
81	81	560.80	182	182	577.51
82	82	596.78	183	183	577.51
83	83	708.39	184	184	577.51
84	84	659.41	185	185	577.51
85	85	757.21	186	186	577.51
86	86	708.39	187	187	577.51
87	87	708.39	188	188	577.51
88	88	708.39	189	189	572.05
89	89	743.72	190	190	572.05
90	90	743.72	191	191	591.80
91	91	708.39	192	192	606.41
92	92	708.39	193	193	577.51
93	93	708.39	194	194	577.51
94	94	708.39	195	195	577.51
95	95	708.39	196	196	577.51
96	96	708.39	197	197	588.27
97	97	708.39	198	198	471.99
			199	199	1,076.00
			200	200	606.41
			201	201	589.39

FIRST FLOOR

SECOND FLOOR



PLOT B



PLOT A

PLOT A

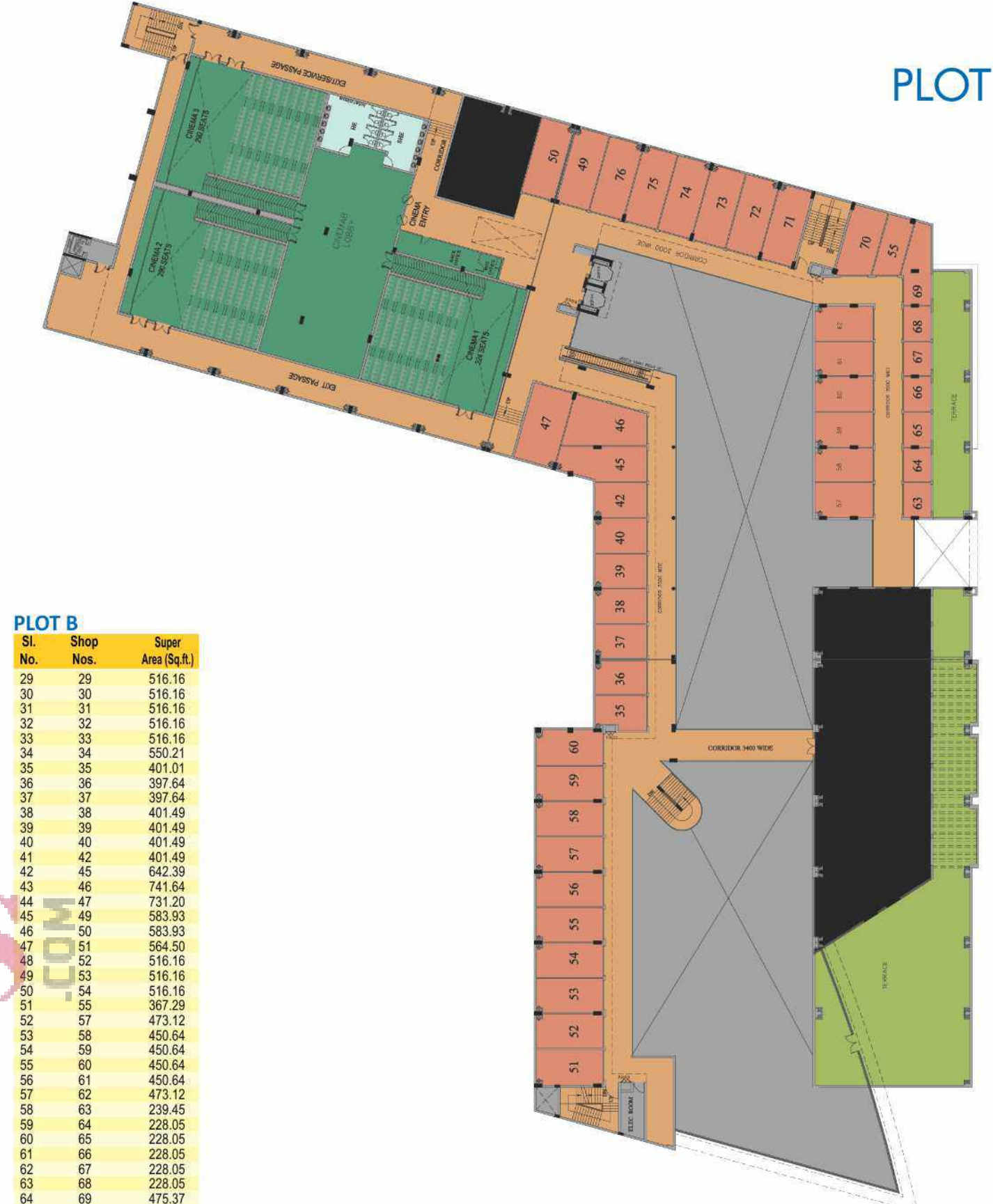
Sl. No.	Shop No.	Super Area (Sq.ft.)
1	01	639.02
2	02	594.53
3	03	594.53
4	04	594.53
5	05	594.53
6	06	594.53
7	07	594.53
8	08	594.53
9	09	594.53
10	10	597.74
11	11	619.42
12	12	594.21
13	13	594.21
14	14	594.21
15	15	594.21
16	16	594.21
17	17	594.21
18	18	594.21
19	19	594.21
20	20	594.21
21	21	594.21
22	22	594.21
23	23	893.24
24	24	1,096.72
25	25	417.07
26	26	523.06
27	27	400.85
28	28	334.04
29	29	359.09
30	30	384.63
31	31	357.81
32	32	429.28
33	33	618.78
34	34	455.61
35	35	441.80
36	36	513.43
37	37	594.05
38	38	590.19
39	39	652.83
40	40	1,022.68
41	41	916.37
42	42	1,042.76
43	43	267.55
44	44	533.99
45	45	469.43
46	46	717.07
47	47	566.43
48	48	593.08
49	49	727.67
50	50	566.43
51	51	538.64
52	52	918.78
53	53	725.74
54	54	759.95
55	55	932.43
56	56	725.74
57	57	710.00
58	58	431.52
59	59	521.14
60	60	451.76
61	61	749.35
62	62	332.11
63	63	647.53
64	64	543.94
65	65	518.09
66	66	518.09
67	67	518.09
68	68	518.09
69	69	518.09
70	70	518.09
71	71	518.09
72	72	608.66
73	73	842.01
74	74	444.21
75	75	498.33
76	76	389.93
77	77	444.21
78	78	444.21
79	79	444.21
80	80	444.21
81	81	444.21
82	82	444.21
83	83	466.37
84	84	466.37
85	85	444.21
86	86	444.21
87	87	444.21
88	88	444.21
89	89	444.21
90	90	444.21
91	91	444.21
92	92	444.21
93	93	444.21
94	94	444.21
95	95	477.45

TENTATIVE AREAS

PLOT B

Sl. No.	Shop No.	Super Area (Sq.ft.)
100	100	564.18
101	101	516.16
102	102	516.16
103	103	516.16
104	104	516.16
105	105	516.16
106	106	516.16
107	107	516.16
108	108	516.16
109	109	549.88
110	110	401.01
111	111	397.64
112	112	397.64
113	113	401.49
114	114	401.49
115	115	401.49
116	116	401.49
117	117	619.42
118	118	764.60
119	119	589.39
120	120	583.93
121	121	583.93
122	122	589.39
123	123	589.39
124	124	589.39
125	125	589.39
126	126	589.39
127	127	589.39
128	128	589.39
129	129	589.39
130	130	589.39
131	131	633.56
132	132	423.82
133	133	371.94
134	134	430.40
135	135	428.95
136	136	429.60
137	137	550.85
138	138	651.38
139	139	447.74
140	140	447.74
141	141	447.74
142	142	447.74
143	143	447.74
144	144	447.74
145	145	443.57
146	146	651.38
147	147	447.74
148	148	447.74
149	149	447.74
150	150	447.74
151	151	447.74
152	152	447.74
153	153	443.57
154	154	405.99
155	155	618.46
156	156	517.93
157	157	517.93
158	158	517.93
159	159	517.93
160	160	517.93
161	161	517.93
162	162	621.67
163	163	529.49
164	164	513.11
165	165	513.11
166	166	543.94
167	167	543.94
168	168	517.93
169	169	517.93
170	170	517.93
171	171	517.93
172	172	543.94
173	173	485.81
174	174	444.21
175	175	444.21
176	176	444.21
177	177	444.21
178	178	444.21
179	179	444.21
180	180	444.21
181	181	444.21
182	182	444.21
183	183	444.21
184	184	440.04
185	185	440.04
186	186	466.37
187	187	466.37
188	188	444.21
189	189	444.21
190	190	444.21
191	191	444.21
192	192	444.21
193	193	452.24
194	194	1,179.75
195	195	606.41
196	196	589.39
197	197	589.39
198	198	589.39
199	199	589.39
200	200	589.39
201	201	583.93
202	202	583.93
203	203	589.39
204	204	589.39
205	205	589.39
206	206	589.39
207	207	589.39
208	208	589.39
209	209	589.39
210	210	567.23

TENTATIVE AREAS



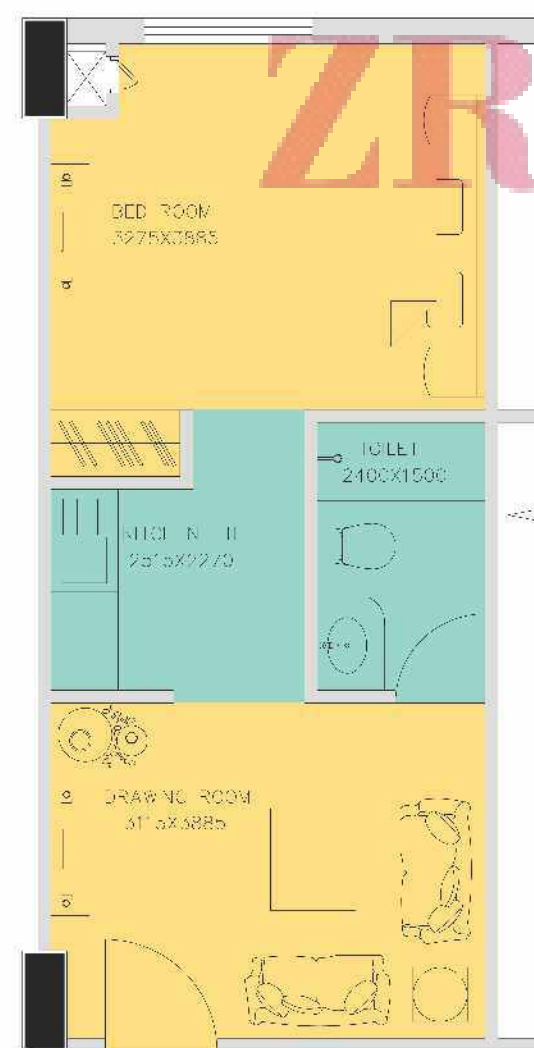
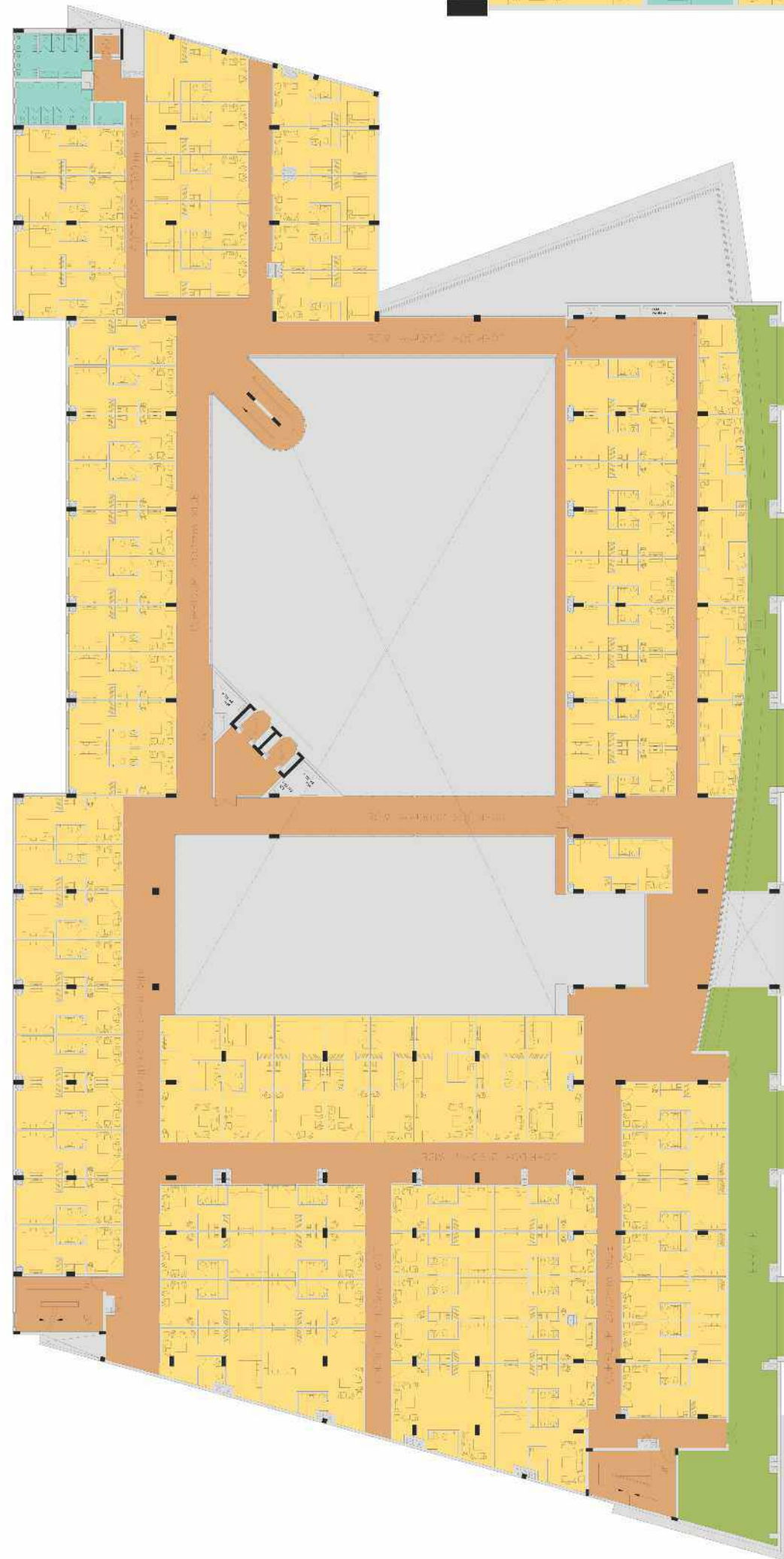
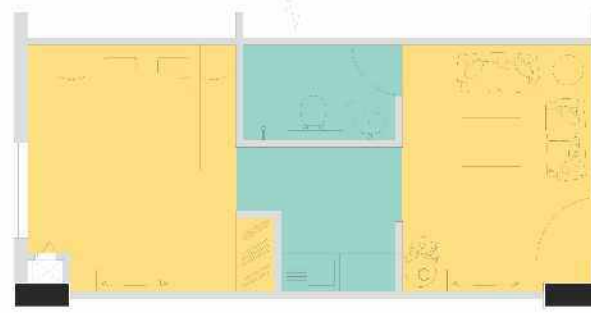
PLOT B

PLOT B

Sl. No.	Shop No.	Super Area (Sq.ft.)
29	29	516.16
30	30	516.16
31	31	516.16
32	32	516.16
33	33	516.16
34	34	550.21
35	35	401.01
36	36	397.64
37	37	397.64
38	38	401.49
39	39	401.49
40	40	401.49
41	41	401.49
42	42	642.39
43	43	741.64
44	44	731.20
45	45	583.93
46	46	583.93
47	47	564.50
48	48	516.16
49	49	516.16
50	50	516.16
51	51	367.29
52	52	473.12
53	53	450.64
54	54	450.64
55	55	450.64
56	56	450.64
57	57	473.12
58	58	239.45
59	59	228.05
60	60	228.05
61	61	228.05
62	62	228.05
63	63	228.05
64	64	475.37
65	65	550.53
66	66	606.41
67	67	589.39
68	68	589.39
69	69	589.39
70	70	589.39
71	71	589.39
72	FOODCOURT	8,107.74
73	RESTAURANT	1,811.37

TENTATIVE AREAS

MULTIPLEX
SUPER AREA : 22,081 sq.ft.
TENTATIVE AREA



ZRICKS.COM

FACILITIES

- Bed with side table
- Sofa / chairs
- Study table
- Cupboards
- Blinds
- Window curtains
- LED TV
- AC quilt
- Split AC
- Room heater
- Fan
- Light fittings
- Table Lamp
- Steam press
- Microwave oven
- Induction cooking plate
- Bath room with complete fittings
- Geyser
- Hair drier
- Wooden flooring

FEATURES

- 100% Power back-up
- 24 hrs. 3 tier security
- Coffee shop / restaurant in the mall
- Gymnasium with latest equipment in the mall
- Bell desk / concierge facility in the mall
- Wi-fi complex
- Multiplex
- Dedicated hi-tech elevators
- Escalators

