



ZRICKS.COM

THE EDEN OF COMFORTABLE LUXURY





TOP GLIMPSE FOR THE STRONG FOUNDATION



B H I W A D I

WHERE VISION

The promoters' testimony

MEETS ASPIRATIONS

Krish Vatika, Bhiwadi is the 'Aspiration Realized' of the vision of Krish Group. Krish Group has emerged as one of the fastest emerging real estate conglomerate promoted and nurtured by one of the most reputed and valuable business house of Rajasthan.

Krish Group has changed the profile of Bhiwadi while it has kept its feet firmly entrenched in the city and brought out world class lifestyle projects in Bhiwadi. The journey of Krish Group had started with the inspired projection of Krish Vatika-I, a modern and fully integrated residential apartment to give a completely new direction to the living standards of people of Bhiwadi. Keeping in pace with the requirements of the community at large, the group has also come up with Krish City, an integrated township consisting of Group Housing, Executive Floors & Villas, Dispensary, School, Parks etc. and Krish Mall, a commercial project of approx. 1.5 Lac sqft.

Krish Group has earned the trust of innumerable customers by giving them the very best at the most reasonable price, and we intend to emulate the feat once again. The prime objective of Krish Vatika- II too is to provide the best specifications at the most affordable price.

The success of “Krish Vatika-Phase I”, “Krish City, and “Krish Mall” has inspired us to launch the second phase of Krish Vatika with the same commitment and trust.

Krish Vatika-I



Krish City



B H I W A D I

BHIWADI

THE NEXT DELHI

IN THE MAKING

DISTANCE OF BHIWADI FROM VARIOUS DESTINATIONS

- Dhaula Kuan Approx. 60 minutes
- Airport Approx. 55 minutes
- Rajiv Chowk Approx. 40 minutes
- Haldiram Approx. 35 minutes
- IMT Manesar Approx. 20 minutes
- Dharuhera Approx. 5 minutes
- Ind. Area Bawal Approx. 15 Minutes
- Ind. Area Neemrana Approx. 40 minutes



B H I W A D I

Map not to scale. Time estimated after completion of master plan road

BHIWADI

THE HARMONIOUS BLEND OF NATURE AND LUXURY



Unlike the life in a metro city which is full of confusion, the life in smaller cities gives a harmonious lifestyle where nature and luxury blend together. One such city is Bhiwadi.

Bhiwadi is the fastest growing industrial town in the outskirts of Metro City Delhi. The prime industrial town of NCR and Rajasthan, “Bhiwadi” comprises of 4 industrial areas, viz, Bhiwadi, Chopanki, Khushkhera and Kaharani. The area is spread over approx. 5300 acres and at present around 1000 industries are operational. Some very big industries like Gillette, Bausch & Laumb, Honda Siel small car plant, Honda 2 wheeler Plant, Shree Cement, Lafarz, Orient Craft, Kamdhenu Steel, Rathi Steel, Jaquar, Pepsi, Saint Gobain are already a part of this industrial cluster.

Apart from business and manufacturing, the infrastructure available here is also up to the standard of a big city. Bhiwadi is well connected with NH-8 (Delhi-Jaipur Highway), SH-25 (Alwar-Bhiwadi Road) and Rewari Sohna Road. Rewari Railway Junction is only 20 minutes away, Manesar is 20 minute drive, Gurgaon is 30 minutes, while it takes only 1 hour to Domestic and International Airport of Delhi. All in all well-connected township of Bhiwadi keeps you in touch with the world without the noise and pollution of a metro city.

Bhiwadi can boast of its ample facilities and civil amenities. Residential sector includes various housing projects like Ashiana Villas, Ashiana Aangan, Konark Oasis, Krish Vatika, Krish City apart from Housing Board, UIT and Bhagat Singh Colony. A fairly good number of health care facilities which includes Private Clinics & Hospitals / Nursing Home & Govt. hospitals are available. Shopping Complexes and Malls are also in adequate & many more coming. Classic Golf Course, Wet & Wild Resort, Country Club Resort and Heritage Village and Tree House, are in

proximity too. The upcoming Multiplexes include BIG Cinemas, SRS Cinemas etc.

The reputed Rotary and Lions club too are present in the city. Some well organised educational institutions like Modern Public School, St. Xavier School, Manipal Starex School, DPS Rewari are to name a few. Almost all premier Banks like Axis, HDFC, ICICI, SBI, SBBJ, PNB, OBC, BOB, Yes Bank, Kotak Mahindra, Allahabad Bank, ING Vysya etc. have their branches in Bhiwadi. Hotels, restaurants and other recreational facilities are also available here.

INVESTMENT

It has been proved with the past track record that investment in real estate in Bhiwadi makes great business sense. The presence of all the corporates in the neighborhood with a fine blend of civil amenities makes investment in Bhiwadi, the RIGHT CHOICE to make. Bhiwadi has delivered handsome returns to those who saw the opportunity and invested in property here. The prices have risen many fold and are expected to follow the trend in future as well with more and more MNCs coming to the city.





SUCCESS BREEDS SUCCESS



After the overwhelming response of Krish Vatika - I
we are presenting Krish Vatika-II, for those who missed the opportunity.

B H I W A D I

KRISH VATIKA-II

THE SECOND EDITION OF SUCCESS

There is an old proverb that History repeats itself. But we take it as Success repeats itself. For us Success of Krish Vatika Phase-I & Krish City is a history now and it is going to be repeated in Krish Vatika-II.

The pleasant experience of delivering possession of Krish Vatika-I to customers on time has inspired us to bring the second edition of Success i.e. Krish Vatika-II, to offer you an innovative and luxurious lifestyle in the lap of nature.

Krish Vatika-II offers very spacious, luxurious, multistory apartments fully integrated with modern amenities and lifestyle features. The complex is planned with landscaping and equipped with fenced, manned and CCTV Security features with Wi-Fi connectivity. All the apartments are connected through intercom. The central green lounge with park and water body are designed by professional landscape architects. This landscape garden is one of the most beautiful and the largest in Bhiwadi. Approximately 80% land area is open and green and it works as lungs of the complex.

Krish Vatika provides some exclusive features to its residents such as an excellent community hall, some very luxurious guest rooms exclusively for the guest of the residents. Apart from this, we'll also provide dormitory for servant & drivers.



Krish Vatika-II will provide 24 Hrs. power backup and ample water supply to its residents. The residents of Krish Vatika-II will feel pleasure to live in a home with ultra modern specifications.

Recreation facilities provided in Krish Vatika are unique and most ideal. Facilities include Indoor Badminton Hall, Billiards Room, TT Room, Sauna and Steam Bath, Swimming Pool (adult and kids), Jacuzzi, Health Club, Gymnasium etc. which add extra luxury to the lifestyle.



B H I W A D I

Site Plan



- | | | |
|------------------------|--|--------------------------------|
| 1. Main Entrance | 6. Sauna/ Steam Bath | 10. Servant Dormitory (Ground) |
| 2. Shops (Ground) | Gym/ Health Club | 11. Temple |
| 3. Guest Room (Ground) | 7. Kids Play | 12. Central Park |
| 4. Swimming Pool | 8. Indoor Games (Badminton, T.T. Billiard) | 13. Garden Pavilion |
| 5. Children's Pool | 9. Sit Out | 14. Utility Buildings |
| | | 15. Amphitheater |

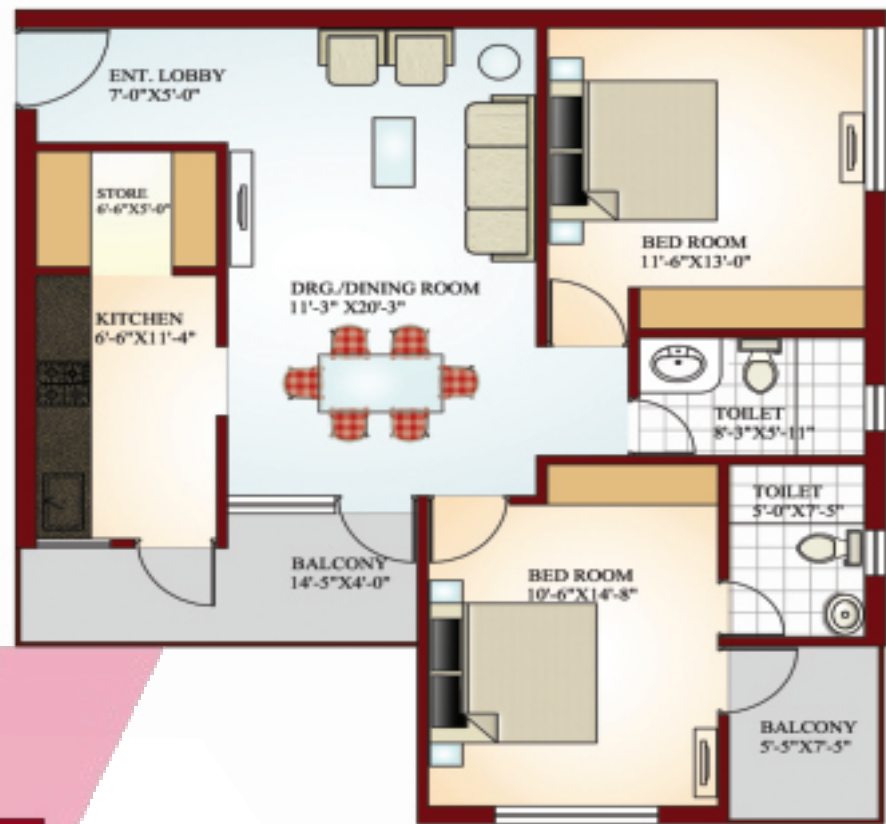


Phase-II

B H I W A D I

Plan not to scale

glorious lifestyle..



2 BEDROOM APARTMENT (SUPER AREA APPROX. 1210 SQ.FT)



3 BEDROOM APARTMENT (SUPER AREA APPROX. 1520 SQ.FT)

..higher comfort quotient



Phase-II

B H I W A D I

Area calculation will be done as actual measurement at the time of possession

Environment-friendly building with quality specifications



Structure

Earthquake resistant, RCC frame structure.

Flooring

Vitrified Tiles in Drawing, Dining, Bedrooms.
Wooden Laminated Flooring in Master Bedroom.
Anti skid ceramic tiles in Kitchen, Toilet and Balcony.

Walls

Oil Bound Distemper of reputed brand.
Door Frame
Wooden Door Frame.

Doors

Main door - Wooden flush door with Natural Door Skin.
Remaining doors - Wooden flush doors with teak veneer.

Window

Window Frame and Glazed shutters of Hard Wood.

Kitchen

Granite Counter Top with Stainless Steel Sink.
Glazed tile Dado up to 2' height.

Bathrooms

Ceramic Glazed tiles up to 7' height with sanitary fixtures.
C.P. fittings of reputed brand, Provision for hot and cold water.

Electricals

Conduit Copper wiring.
Modular Switches.
Power Back up of 750 watt.

Exterior Finish

Acrylic exterior emulsion /Textured paint.

Telephone / TV

Points will be provided in Drawing / Dining Room & All Bedrooms.

Elevators

Two numbers of automatic lifts in each tower.



Krish Vatika

Phase-II

B H I W A D I

Facilities

Executive Club
Swimming Pool
Billiard Room
Sauna Bath
T.T./Hobby Room
Indoor Badminton Court
Gymnasium
Health Club
Community Hall
Steam Bath



Matchless Amenities



Other Facilities

Wi - Fi Campus
Rain Water Harvesting
24 Hour water & electricity
Common dormitory for servant and drivers
Children Park
Mini Amphi Theater
Basic Daily need shop
Well Furnished Guest Rooms



Security

CC TV
Gated Complex
24 Hours Security
Intercom
Fire Fighting
MCB Electrical Circuit




Krish Vatika
Phase-II

B H I W A D I



ZRICKS.COM
Finance available from :-



KRISH INFRASTRUCTURE PVT. LTD.

Site Office : Alwar Bypass Road, Opp. Ashiana Gardens, Bhiwadi, (Rajasthan) Ph.: Mob.: 9887094571, 9887094572
Corporate Office : 24 GF, Vipul Agora, M.G. Road, Gurgaon, (Haryana) Ph. : Mob.: 9560714445, 9560714446, 9560714447
Email: sales@krishvatika.com Website : www.krishvatika.com

SMS KC to 54545