

The logo features the text "Regent Square" in a dark red, serif font, with a large, stylized "Z" graphic behind it. The "Z" is composed of a grey triangle on the left and a pink triangle on the right. Below this, the text "ZRICKS.COM" is written in a pink, sans-serif font.

Regent Square
ZRICKS.COM

JMD

AVIVA

Life Insurance

AVIVA

Life Insurance

SBC

एच एस बी सी

kotak

Life Insurance

kotak

Kotak Mahindra Bank

Standard Chartered

Regent Square

Very Long

HAPPY

HSBC 



My Home Dream | Personal Loans | My HSBC | Contact your SME | Start your business | Personal Savings & Current Accounts | Personal Finance | HSBC | HSBC

HSBC | Personal Savings & Current Accounts | Personal Finance | HSBC | HSBC

ZRICKS



JMD Empire

Call: 011-4056503 & 011-40565056

Bira Sun Life Insurance

Bira Sun Life Insurance

Service Counter

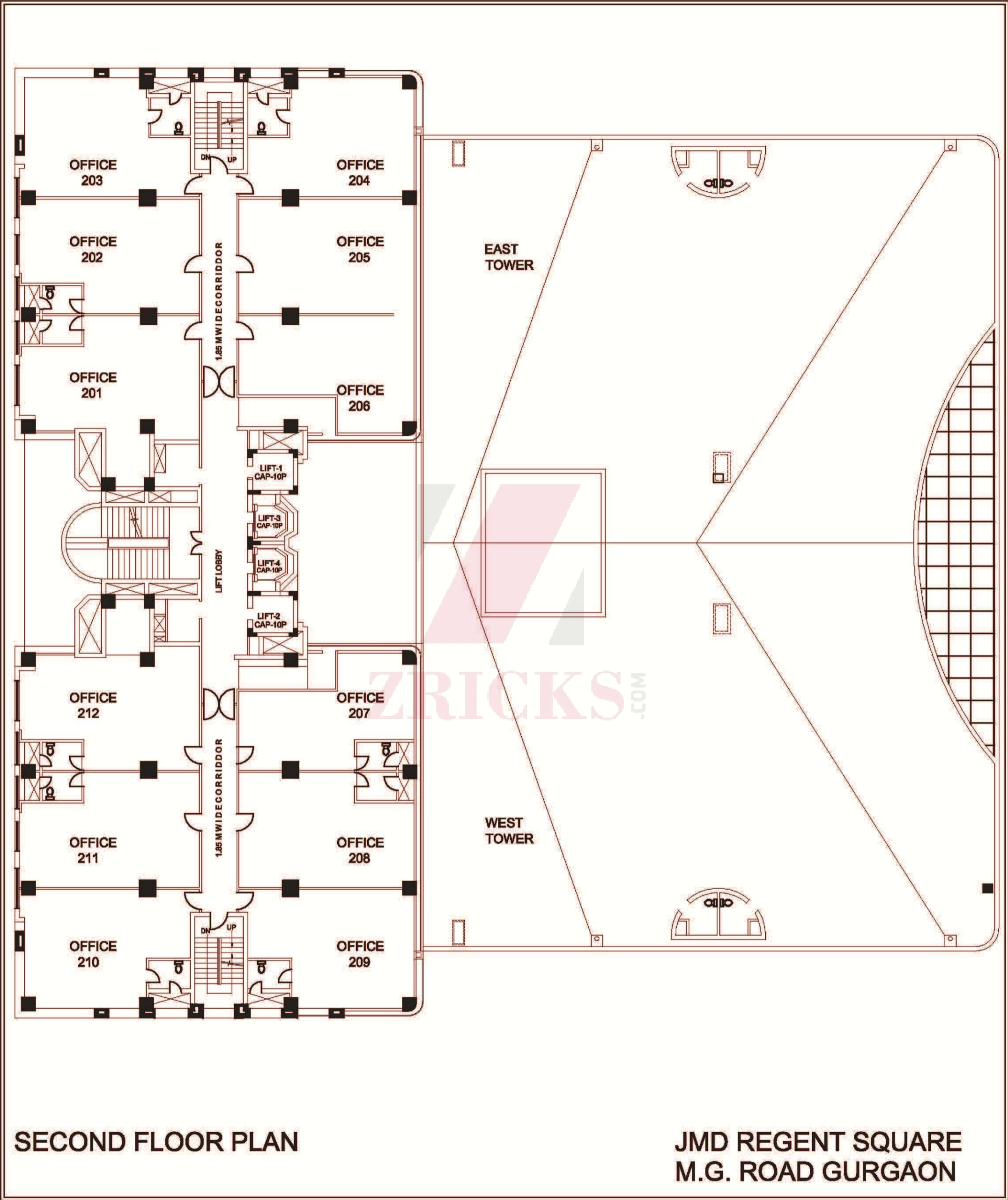
Service Counter



JMD Empire
Call: 024-4636363 & 011-46566556
PROMOTE BY JMD, BANGALORE

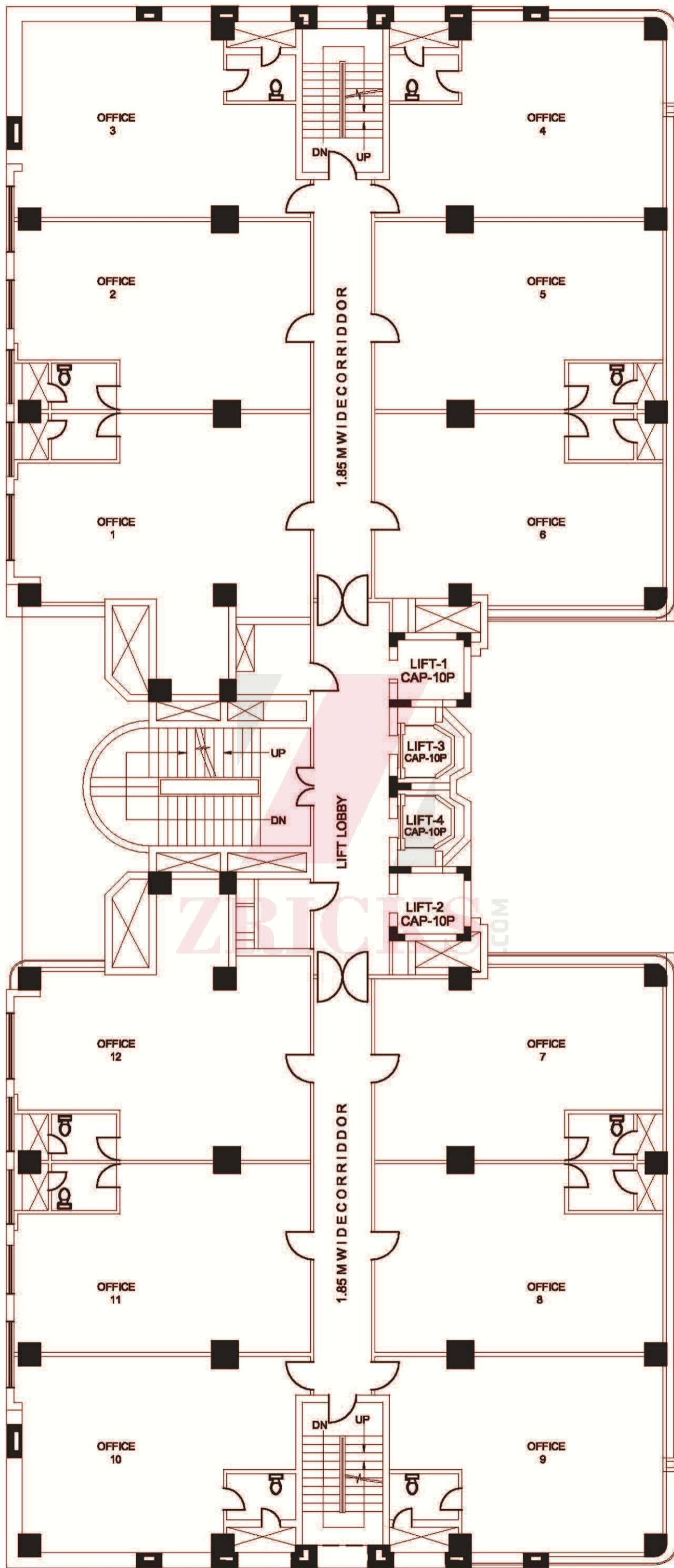
ZRIK





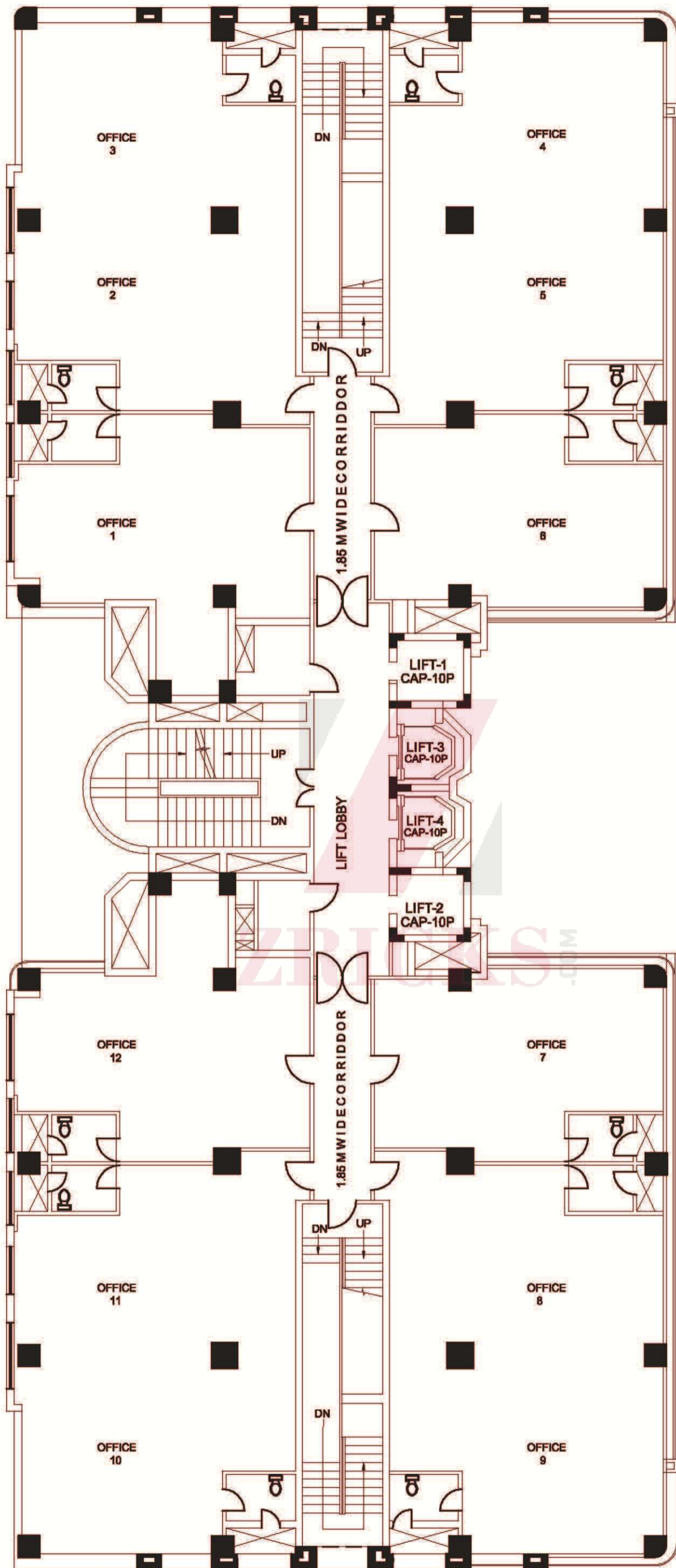
SECOND FLOOR PLAN

**JMD REGENT SQUARE
M.G. ROAD GURGAON**



EAST
TOWER

WEST
TOWER

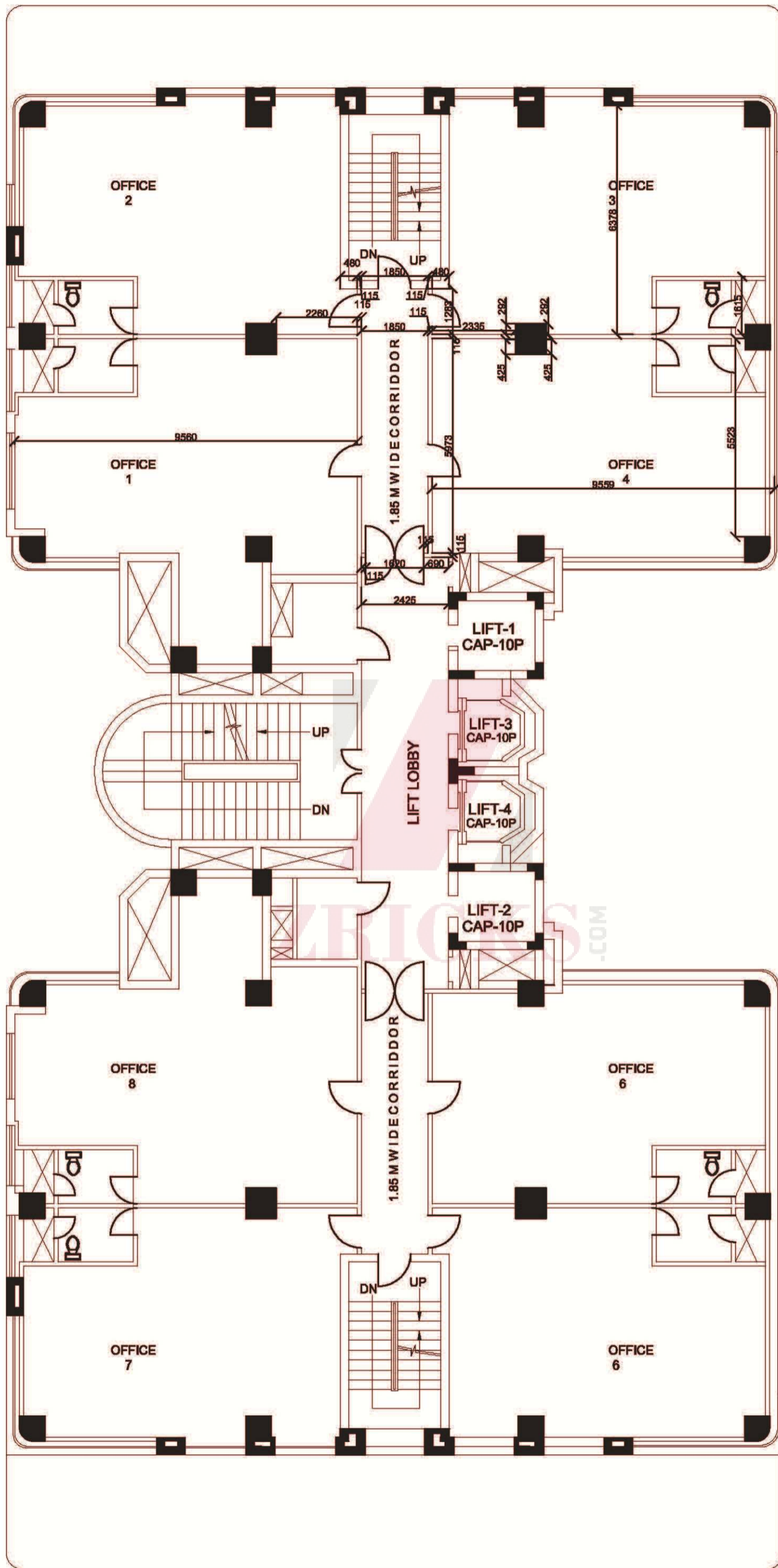


EAST
TOWER

WEST
TOWER

5TH FLOOR PLAN

JMD REGENT SQUARE
M.G. ROAD GURGAON

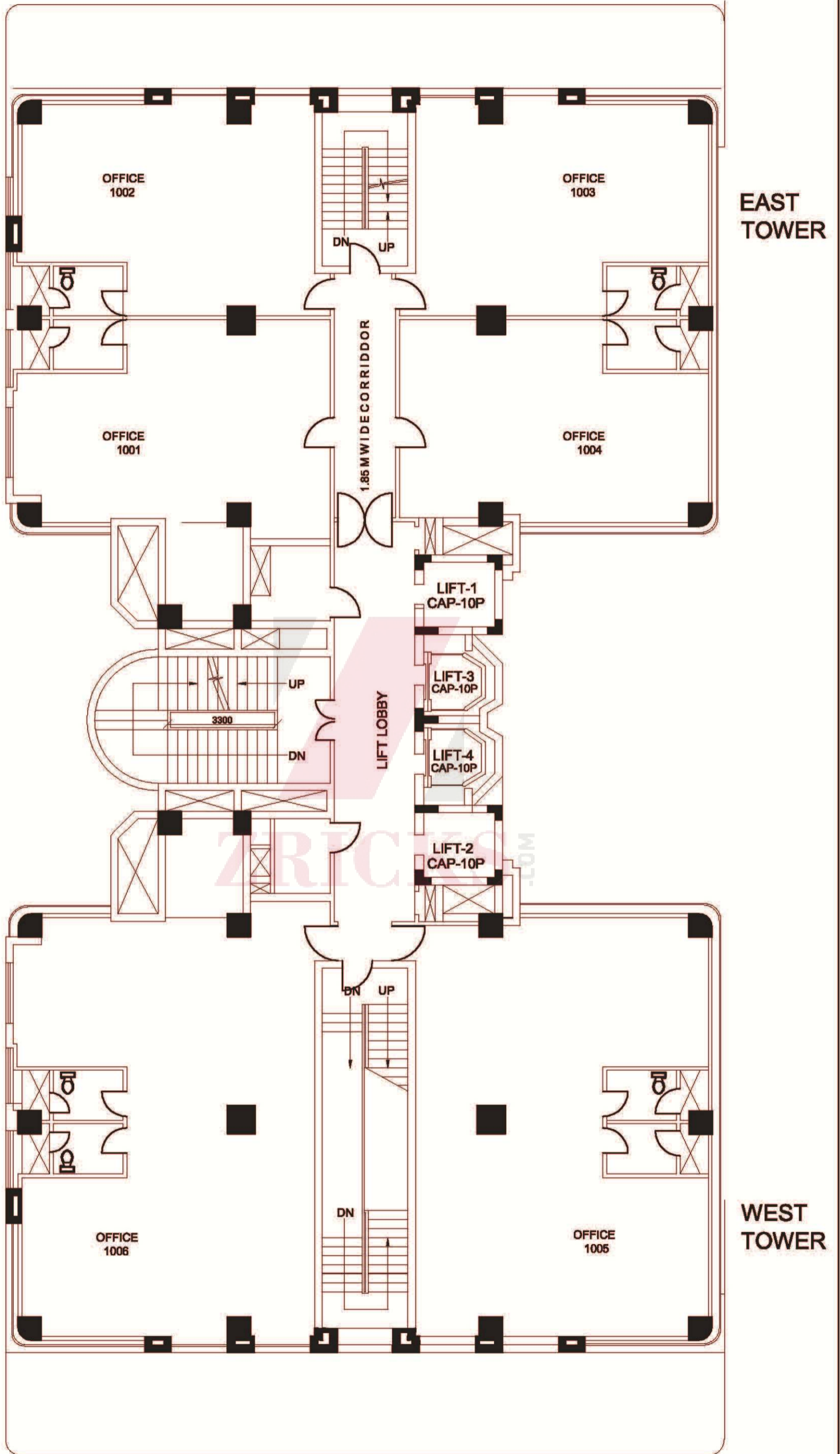


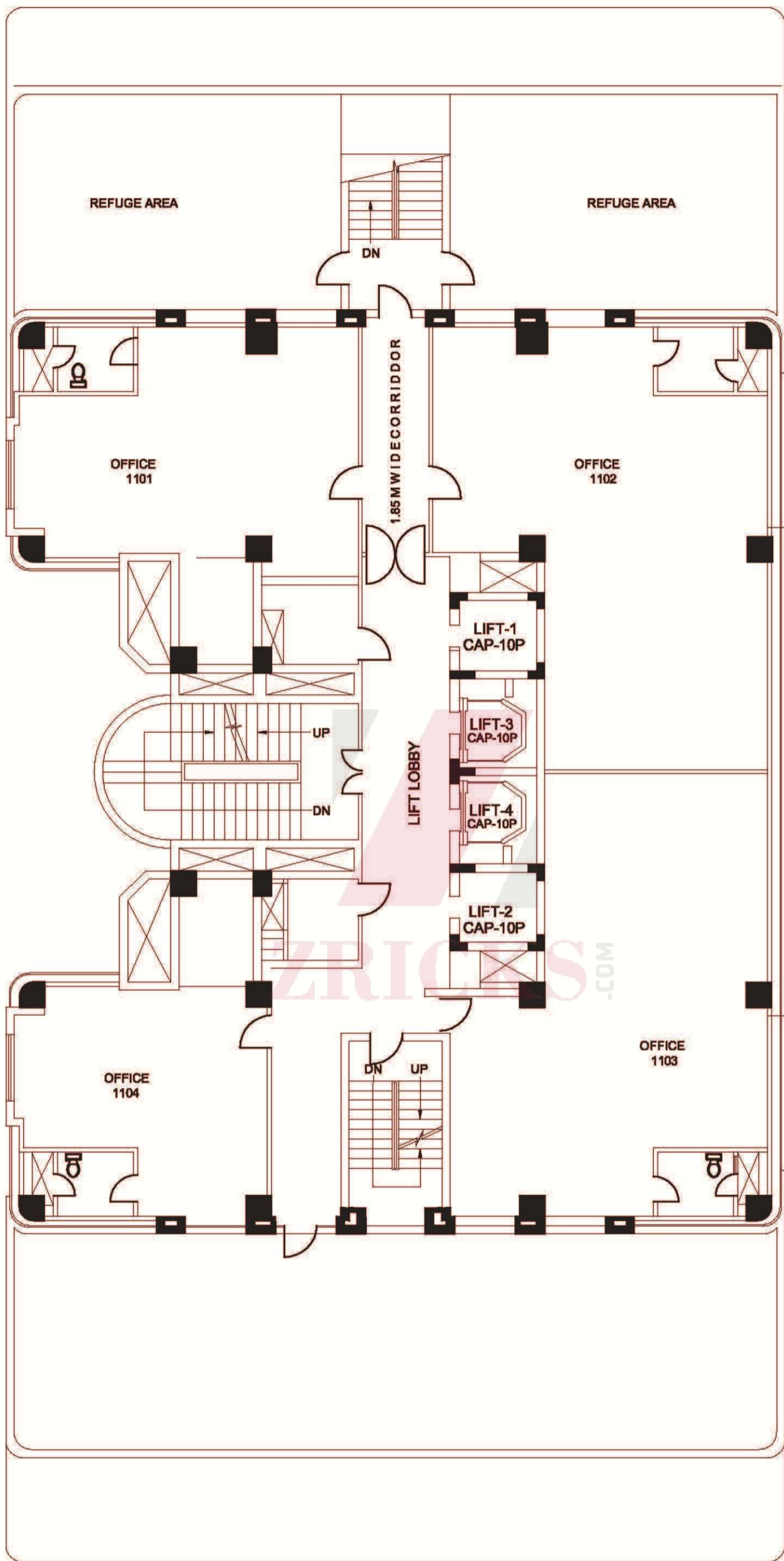
EAST
TOWER

WEST
TOWER

7th TO 9TH FLOOR PLAN

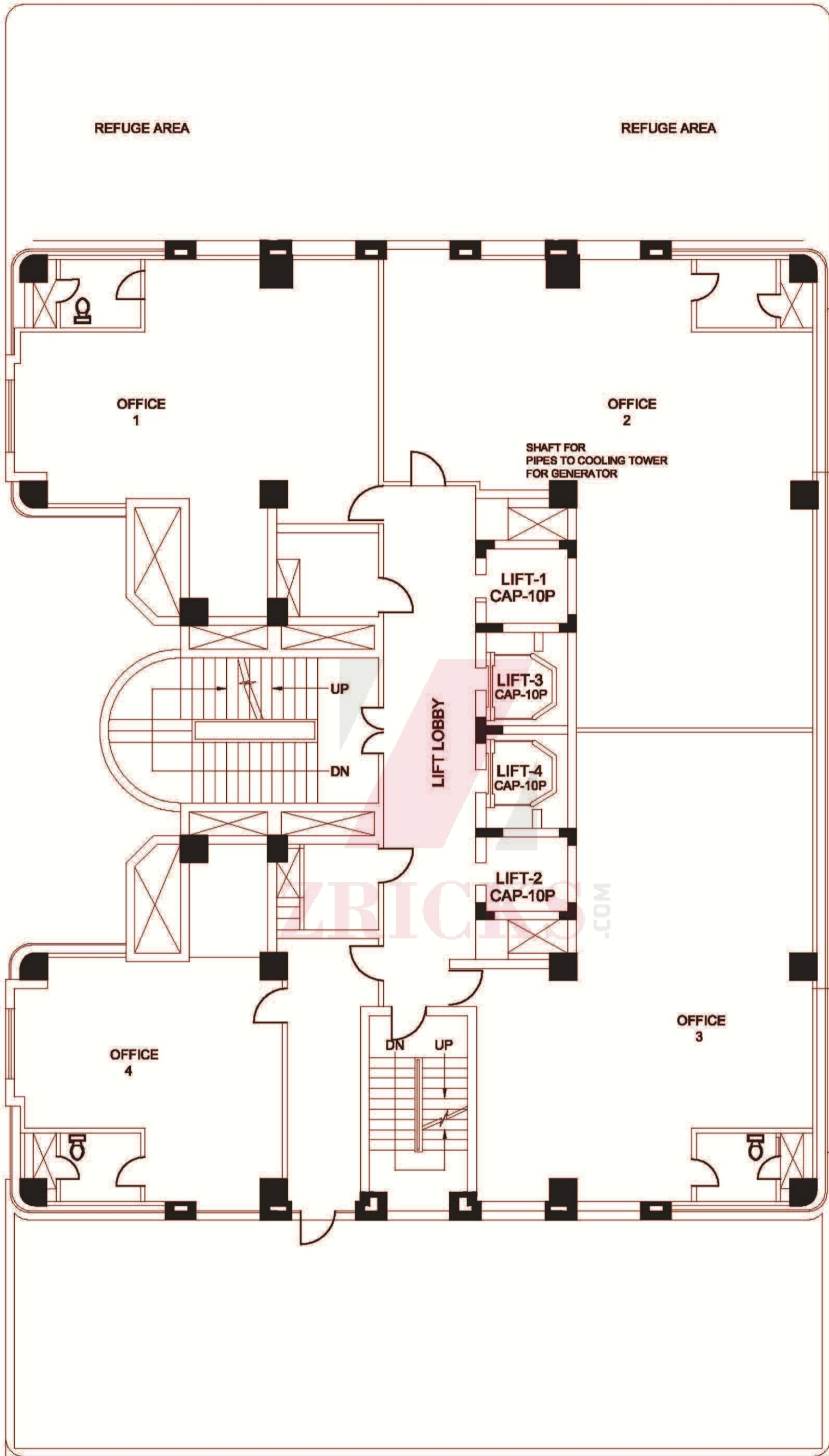
JMD REGENT SQUARE
M.G. ROAD GURGAON





11TH FLOOR PLAN

JMD REGENT SQUARE
M.G. ROAD GURGAON



REFUGE AREA

REFUGE AREA

EAST
TOWER

OFFICE
1

OFFICE
2

SHAFT FOR
PIPES TO COOLING TOWER
FOR GENERATOR

LIFT-1
CAP-10P

LIFT-3
CAP-10P

LIFT-4
CAP-10P

LIFT-2
CAP-10P

LIFT LOBBY

UP

DN

OFFICE
3

OFFICE
4

DN

UP

WEST
TOWER

SPECIFICATION

BUILDING DATA

Site Area : 2.181 acre (8826 sq. mts.)

Gross Floor Area : 140000 sq. ft.

No. of Storeys : Ground plus thirteen.

STRUCTURE

Foundation : Complete R.C.C foundation

Super structure : R.C.C. controlled concrete framed structure.

ARCHITECTURE

- **Colorful polished granite/marble flooring.**
- **Polished granite/marble permanent cladding on external surface of showrooms.**
- **Decorative permanent type textured exterior finish on tower blocks.**
- **Anodised aluminium curtain wall with imported bronze grey tinted reflective toughened glass in floors.**
- **Aluminium windows/glazing with clear toughened glass for showrooms.**
- **Stainless steel handrail with transparent polycarbonate sheet stair railing in atrium.**
- **Perforated aluminium lineal false ceiling in public areas.**
- **Mural, waterbodies, landscapes in atrium.**

AIR - CONDITIONING

- **Centrally air conditioned offices and showrooms areas with year round environmental control.**
- **100% electrical back-up for HVAC system.**
- **Basements mechanically ventilated.**

ELECTRICAL

- **100% back-up with copper wiring distribution.**

FIRE PROTECTION

- **Sophisticated fire protection system comprising hydrants, sprinklers, automatic fire detection and Alarm system.**

SCALATOR

- **World class escalator with attractive glass balustrade.**

ELEVATORS

- **Two numbers scenic elevators with glass panels and two passengers elevators of 10 persons carrying capacity each.**