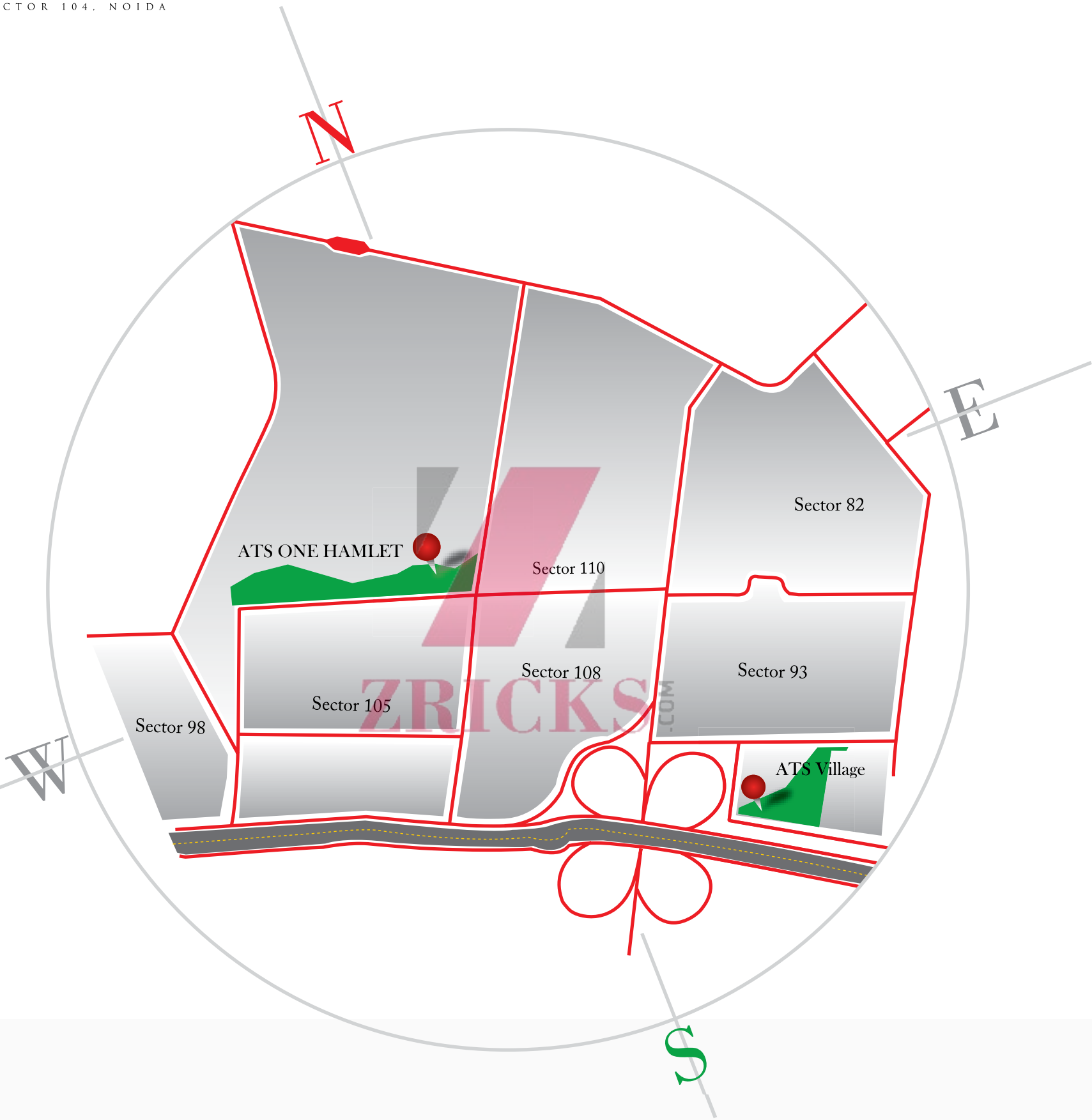


The
Finer Side of
Living





ZRICKS



planned with an eye for spaciousness, greenery and fresh air. A jogging track, a number of water bodies and parks make stepping outdoors feel as good as staying inside your home.

Over ten acres of greenery and landscaped lawns

Large, open spaces and children's play areas

Swimming pool and ornamental ponds

INTERIORS

Hafeez Contractor, the renowned architect, has designed the apartments at ATS One Hamlet to fit the way people live. Optimal space utilisation means that these homes are practical living spaces that look elegant and feel spacious.

Top quality construction and construction materials

Entrances planned for optimum security

Segregation of guest room from private area

AMENITIES

Beautifully designed swimming pools have become a signature style feature of ATS. At One Hamlet, you will also find a large and luxurious clubhouse and amenities that give the experience of living at ATS a touch of elegance and style that others can only aspire for.

A clubhouse complex with swimming pool, tennis, squash and basketball courts

Jogging track and fully equipped gymnasium

Shopping arcade and café

ATS
ONE
HAMLET
SECTOR 104, NOIDA



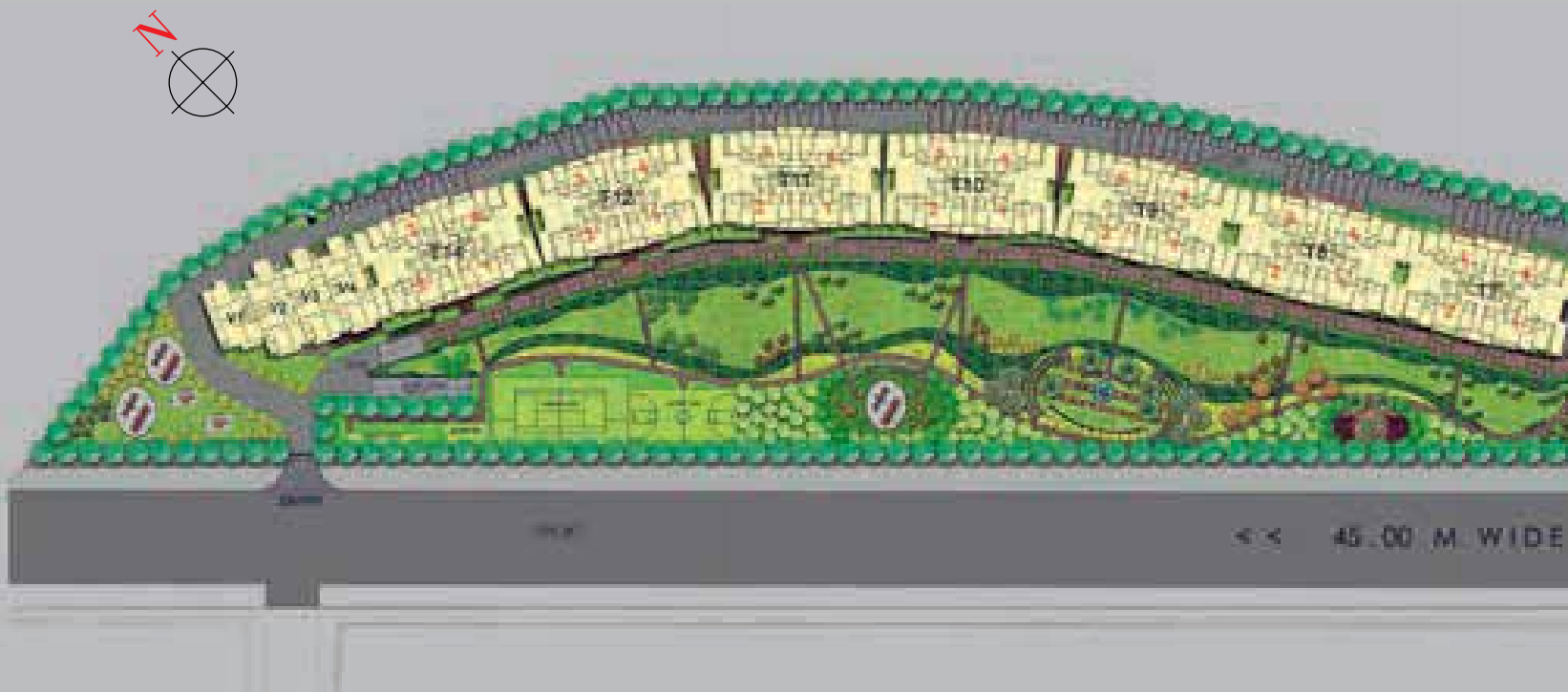
Floor Plan - Type A

Area: 2900 sq.ft.



Notes :

Saleable area is tentative and is subject to change due to changes asked by approving authorities till occupancy certificate is obtained. Architect reserves the right to add / delete any detail / specification / elevation mentioned if so warranted by circumstances.





2

ZRICKS.COM





3

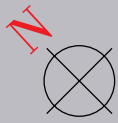


2

Floor Plan - Type B

Area: 2000 sq.ft.

ZRICKS .CO.IN





Floor Plan - Type C

Area: 1636 sq.ft.

4

1

Notes :
 Saleable area is tentative and is subject to change due to changes asked by approving authorities till occupancy certificate is obtained.
 Architect reserves the right to add / delete ant detail / specification / elevation mentioned if so warranted by circumstances.



A New Chapter in the ATS Story

ATS ONE HAMLET

The latest residential project from ATS. It is coming up at Sector 104, Noida, just off the Noida Expressway. ATS One Hamlet will be a premium, gated residential community that will live up to the high standards that have been set by its illustrious predecessors. In fact, with One Hamlet, ATS will again establish new benchmarks for residential living spaces.

LOCATION

Situated in Sector 104, ATS One Hamlet offers all the advantages of an ideal location. It is very close to the centres of activity but still retains a tranquil environment.

Prime location in a sought-after part of Noida

Well-connected by roads

900 metres from Noida - Greater Noida Expressway; close by but quiet

World class schools like Lotus Valley, Shriram School,

DPS, Step by Step and Genesis Global School, reputed colleges and market places are near by, yet none of these disturbs the peace

SITE PLAN

The arrangement of the towers is such that every apartment at ATS One Hamlet overlooks either the park or the greens or both. Also, privacy of the residents is maintained by ensuring that no two apartments face each other.

The site plan is linear to ensure privacy and maximize the available green area

Uninterrupted views over open greens and spaces on all four sides

Over 70% green cover in distinctive "ATS areas"

ENVIRONMENT

Like all ATS projects, ATS One Hamlet has been



ZRIKKS.COM

Specifications

FLOORING	Marble/ Vitrified Tile/ Wooden flooring in the whole apartment except kitchen and bathroom, where floor tile of 1' x 1' or approximate size to be used. All staircases of common landings to be of Marble.
DADO	Glazed/ Ceramic tiles up to 7.0" height in toilets and 2'-0" height above kitchen slab in appropriate colour and print.
EXTERIOR PAINTING	Textured paint finish. Oil bound distemper paint of appropriate colour on interior walls of the flat.
KITCHEN	All kitchen slabs in Udaipur Green stone with Granite Polish, electric points for washing machine and fridge to be provided. Woodwork in kitchen cabinets to be in ¾" commercial plyboard with appropriate finish.
DOORS & WINDOWS	Flush doors with Spirit Polish/ Enamel Paint, Aluminium powder coated hardware fittings and locks of Golden/ Secure or equivalent make. Door frames and window panels of Champ/ Kail/ Sal/ Assam Teak wood, powder coated Aluminium sections/UPVC. Windows to have Aluminium powder coated handles and T-bolts. Size and section as per design of the architect.
PLUMBING	As per standard practice, all G.I. pipes to be painted with anti-corrosion paint prior to use. All C.I. joints to have molten lead hammered to give water tight joints.
TOILET	Parryware/ Hindustan/ Cera or equivalent wash basins and W.C's (of appropriate shades). All taps and fittings to be chrome plated Jaguar/ Parko/ Driplex or equivalent make.
ELECTRICAL	Electrical (copper) wiring to be as per I.S. code. Anchor or equivalent modular switches with switch plates, circuits to have M.C.B. of approved make. T.V., telephone points will be provided in drawing, dining and all bedrooms.
LIFTS	Lifts to be provided for access to all floors.
GENERATOR	Generators to be provided for back-up for lifts and other common areas
WATER TANKS	Underground water tanks with pump house and tube wells for uninterrupted supply of water.
CLUB HOUSE	Club House with swimming pool to be provided.



Site Off.: Sector 104, Noida • Corporate Off.: ATS Tower, Plot 16, Sector 135, Noida, Ph.: 0120-3811500
sales@atsgreens.com, www.atsgreens.com