



Presents
Princely Estate



the world
AT YOUR DOORSTEP



Come to embrace a mesmeric lifestyle that subsists in luxurious and splendid homes, amidst lush green and a pollution-free milieu.

Share the Winner's Vision
M.S. Dhoni

Life becomes princely when your personality shows it, your lifestyle reflects it, & when your home displays it.

Princely Estate, is the reflection of our teams effort to offer the best of lifestyle, best ambience and of course, best location at a truly affordable price. Bejeweled with ultramodern outlook and magnificence, Princely Estate offers the best of amenities and infrastructure which is a trademark for all our projects.

Anil Kumar Sharma
CMD

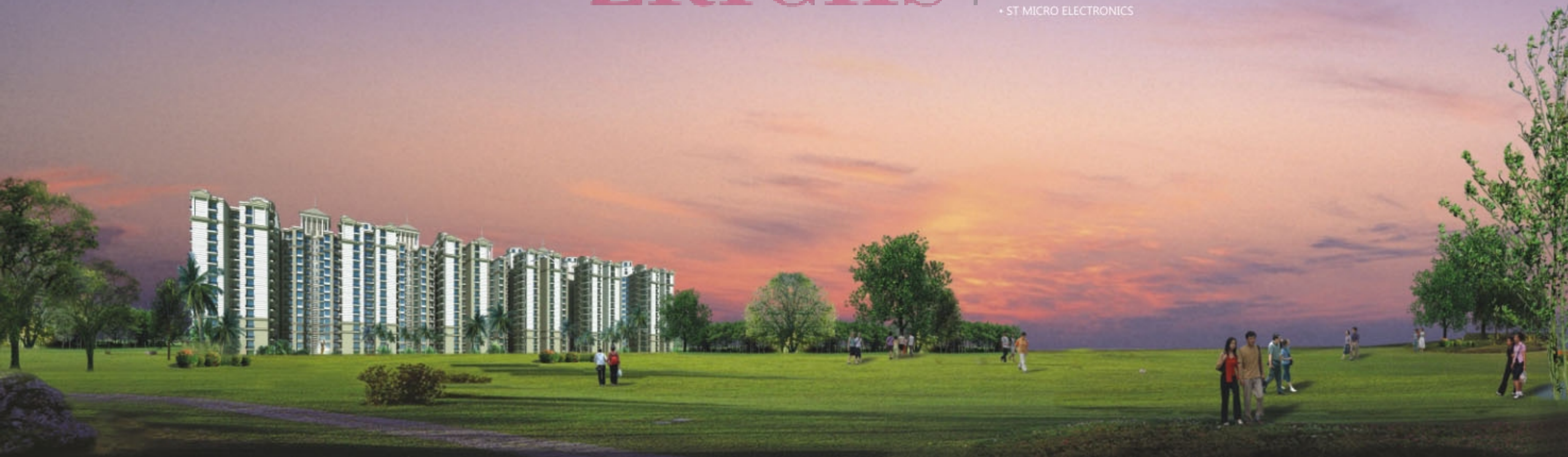


ZRICKS.COM



The ever expanding list of our corporate clientele reflects our ability to meet the highest standards of infrastructure development.

- NTPC
- IOCL
- ONGC
- BHEL
- SAIL
- STAR NEWS
- ZEE NEWS
- IBN7
- DELL
- PDIL
- SAMSUNG
- ST MICRO ELECTRONICS
- CSC
- HONDA
- NDTV
- AAJ TAK
- WIPRO
- HDFC BANK
- SATYAM
- INFOSYS
- VIRGIN
- ICICI BANK
- CANARA BANK
- HSBC
- IBM
- HCL
- IDBI BANK
- HAVELLS
- LG
- GAIL
- CISCO SYSTEMS
- FORTIS
- STATE BANK OF INDIA
- PUNJAB NATIONAL BANK





Presents

Princely Estate



Princely Estate is an Extension of Silicon City, spread over 12 acres, the project offers the exclusivity of an independent gated community. Residents can at the same time enjoy the benefits of being a part of larger township.



Lovely interiors with distinctive colours and great contours will pamper your senses to a great treat of tranquility and peace.

The Features

Princely Estate proffers not only great largeness around you but also great aesthetics and functionality.

- Club Area
- 2 Level Security System
- All Flats Three sides Open and Park Facing
- Greens, Club with Sports, Health, Leisure & Entertainment Facilities
- Swimming Pool, Kid's Pool with Gymnasium
- Multi-utility Sport Hall, Medical Facility
- CCTVs for Common Areas
- Intercom for Every Apartment
- Earthquake Resistant Structure
- 24x7 Water Supply
- Ample Parking Space
- 24x7 Power Backup
- Wi-Fi Enabled Complex



ZRICKS.COM





With 80 % open area, living at Princely Estate will be revitalizing for soul and mind, amidst beautifully landscaped environment, dappled with water features and play areas for kids.

30 M Wide Road



70 M Wide Road

ZRIIC
PARK

PARK



45 M Wide Road

LEGEND

- Studio
- 2 BHK + 2 Toilet
- 2 BHK + 2 Toilet + STUDY
- 3 BHK + 2 Toilet
- 3 BHK + 2 Toilet + A
- 3 BHK + 3 Toilet + STUDY



*The secret of joy is contained in one word - excellence.
To know how to excel is to enjoy it.*

Club Amenities

Lead an excited life where you can amplify your every passion....

Pamper and coddle yourself in an indulging club that will lighten monotony. The club will come along with a galore of amusing choices like billiards, tennis, swimming pool and a well-equipped gymnasium.

While sporty options will keep your healthy side up, the sparkling pool will be a hot-spot during summers. A mere splash in it will render freshness to your mind and body.

Every time you want to rejuvenate your body, you just step into this club area and just chill...

- A Well Equipped Gymnasium
- Swimming Pool
- A Well Maintained Tennis and Badminton Court
- An Indoor Snooker/Billiards Parlor



ZRICKS.COM

- Eco-Friendly Energy Efficient Design
- Energy Efficient Lighting Systems & Controls
- Use of BEE** Energy Star labeled Equipments

Princely Estate has been segmented into two phases. This assures early delivery of the project to the customers who book the units in phase 1.





It is a complete and a comprehensive destination complemented with ease of access to shopping malls, business centers and freedom to choose from well-reputed educational institutions.

Amrapali
Silicon City
Presents
Princely Estate

2 Bedroom + 2 Toilet

Area : 875 sqft

Prime Location

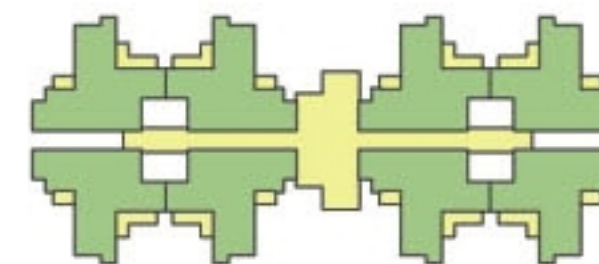
Princely Estate is expediently situated in Sector 76, Noida. Apart from being a refreshing locale of nature's panoramic galore, it is also the futuristic hub of contemporary and progressive advancement.

Amrapali
Silicon City
Presents
Princely Estate



Locational Advantages

- 0 Km. from Sec.50
- 1.5 Km. from Sai Mandir
- 2 Km. (approx.) from Fortis Hospital
- 15 Min. Drive from DND Flyway
- 10 Min. Drive from Sec. 18 Mkt.



Tower - R & S

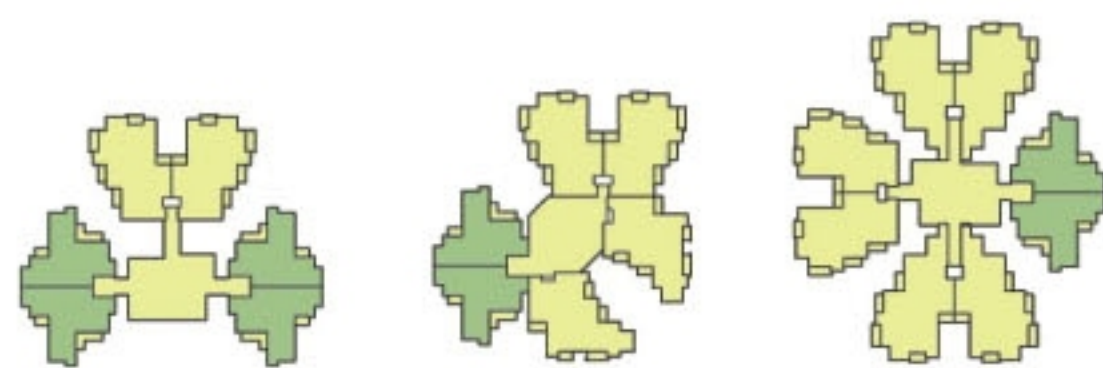


2 Bedroom + 2 Toilet + Study

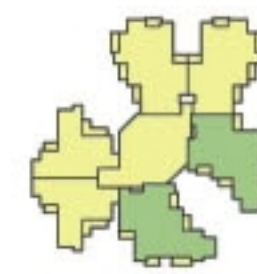
Area : 1015 sqft

3 Bedroom + 2 Toilet

Area : 1315 sqft



Tower - A, B, C, D, E, F, G, H, J, K, L, M, N, O, P & Q



Tower - A, B, C, D, E, F, G, H, J, K, L, P & Q

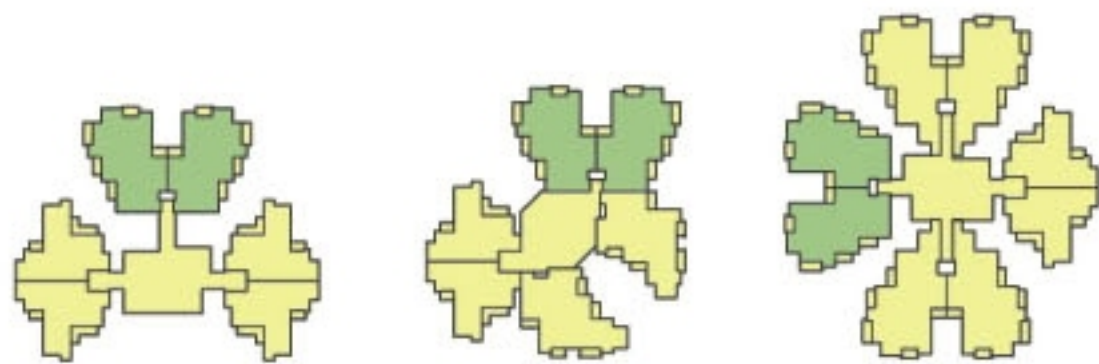
3 Bedroom + 2 Toilet

Area : 1315 sqft (Option-2)

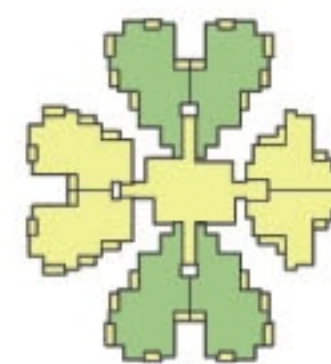


3 Bedroom + 3 Toilet + Study

Area : 1455 sqft



Tower - A, B, C, D, E, F, G, H, J, K, L, P & Q



Tower - A, C, D, E, F, G, H, K, M, N & O



An intense effort has been made to construct comfy homes within a compact township that makes an additional effort to present plenty of amenities.

Specifications

Comfort and concern personifies at Princely Estate with a well-thought-out and premeditated infrastructure. Perfection and modernity join hands mutually to present a wonderful mingle of nifty lifestyle and structural setting.



STRUCTURE

Earthquake Resistance RCC Framed.

LIVING / DINING / LOBBY PASSAGE

FLOOR
Vitrified tiles / equivalent.

WALLS
Plastic paint.

CEILING
Designer POP.



BEDROOM

FLOOR
Vitrified tiles / laminated wooden flooring in master bedroom.

WALLS
Plastic paint.

CEILING
Designer POP.

BALCONY

FLOOR
Anti skid ceramic tiles / terrazzo tiles.

WALL & CEILING
Plastic paint / textured paint.



KITCHEN

WALLS
Designer ceramic tiles with border upto 2 Ft. above counter.

FLOOR
Combination of anti skid ceramic tiles / vitrified tiles.

COUNTERS
Granite working platform.

FITTINGS / FIXTURES
CP fittings, stainless steel sink.

WOOD WORK



TOILET

WALLS
Designer ceramic tiles.

FLOOR
Combination of anti skid ceramic tiles / vitrified tiles.

FITTINGS / FIXTURES
ISI fittings, granite counter, standard chinaware fixtures & fittings for geyser water supply.

WATER
Hot and cold water pipeline provision.



DOORS

ENTRANCE DOORS
Polished skin doors.

INTERNAL DOORS
Hardwood frame with flush door shutter.

WINDOWS

UPVC / powder coated aluminum glazing.

LIFT LOBBY

FLOOR
Combination of different colours of marble / stone in pattern.

WALLS
Granite tiles cladding upto 3 Ft. and texture paint above.

ELEVATOR
High speed elevator.



ELECTRICAL

Modular switches.
24 Hrs. power backup provision.

WATER

Drinking water treatment facility by individual R.O. system.





Pan Oasis - Noida



The management is a right blend of experience and youth which brings in a balanced approach in project acquisition and project execution.

Group Profile

Various aspects of Real Estate and construction have been explored by Amrapali Group to such a grand extent that it has become a brand name.

It has successfully proved its forte in diverse fields ranging from Housing Projects to Commercial edifices to IT Parks to Educational Institutions. In the last couple of years Amrapali Group has contributed in the phenomenal growth of real estate and infrastructure industry with many turnkey solutions through multifaceted residential complexes.

The group fully understands the importance of quality and ensures the best of technology, planning, design and construction for all of its projects.

This has resulted in the transformation of its projects - Amrapali Green, Amrapali Royal, Amrapali Village, Amrapali Awadh, Amrapali Vaishali & Amrapali Exotica Apartments into landmarks.



Amrapali Platinum - Noida



20 Cities 40 Projects
Spreading Smiles Across India



Amrapali Empire - Ghaziabad



Amrapali Sapphire - Noida



Amrapali Eden Park - Noida



Amrapali Kanha, Vrindavan



Amrapali Tech-Park, Greater Noida



Amrapali Village, Indirapuram



Amrapali Mall, Vrindavan



Amrapali IMT Manesar, Gurgaon



Amrapali Vaishali, Vaishali



Amrapali Royal, Indirapuram



Amrapali Green, Indirapuram



Amrapali Modern City, Indore

ZRICKS



ZRICKS.COM



An ISO 9001:2000 Company

Developing India

CORPORATE OFFICE : C-56/40, Sector 62, Noida (near FORTIS)

Ph. : 0120-4055555 | Fax : 0120-4233556

Email : mkt@amrapali.in | Website : www.amrapali.in | SMS "Amrapali" to 53456

Architect : **DEEPAK MEHTA & ASSOCIATES**

Associated with : **BIHARI JI ISPAT UDYOG LTD. & MAA SHARDA (H) PVT. LTD.**

APARTMENTS • MALLS & MULTIPLEXS • SEZs • IT PARKS • HOTELS • HOSPITALS • EDUCATION • FMCG (Mum's)

Note : Visual representations shown in this brochure are purely conceptual. All Building Plans, Specifications, Layout Plans etc. are tentative and subject to variation & modification by the company or the competent authorities sanctioning plans. Brand names appearing in the brochure are for artwork purposes only.