

# *atharva*

**Exclusive Luxury Homes**  
Sector-109, Gurgaon (Near Delhi Border)

**ZRICKS**.COM



# PENTHOUSE TYPE A

Sales Area : 4370 sq. ft.  
Terrace Area : 940 sq. ft.



LOWER LEVEL



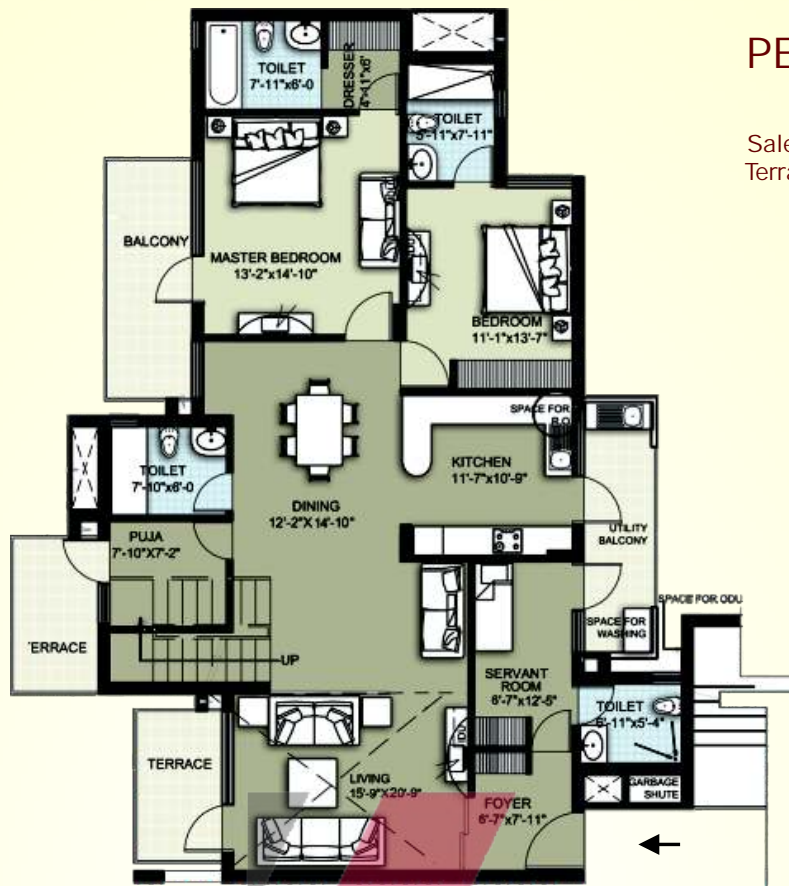
UPPER LEVEL

- In the interest of maintaining high standards, all floor plans, layout plans, areas, dimensions and specifications are indicative and are subject to change as decided by the company or by any competent authority
- Soft furnishing, furniture and gadgets are not part of the offering

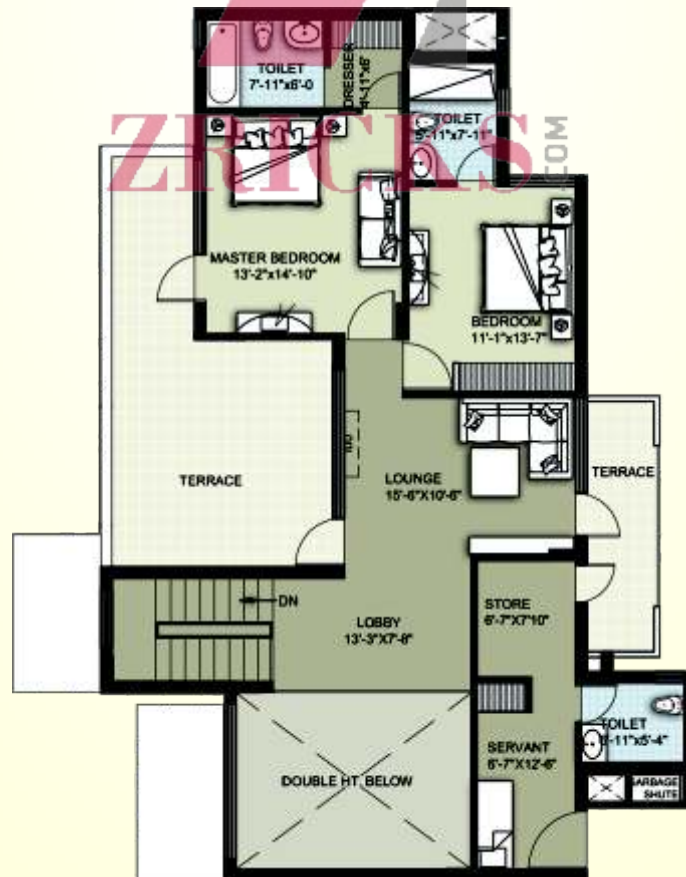


# PENTHOUSE TYPE B

Sales Area : 3655 sq. ft.  
Terrace Area : 325 sq. ft.

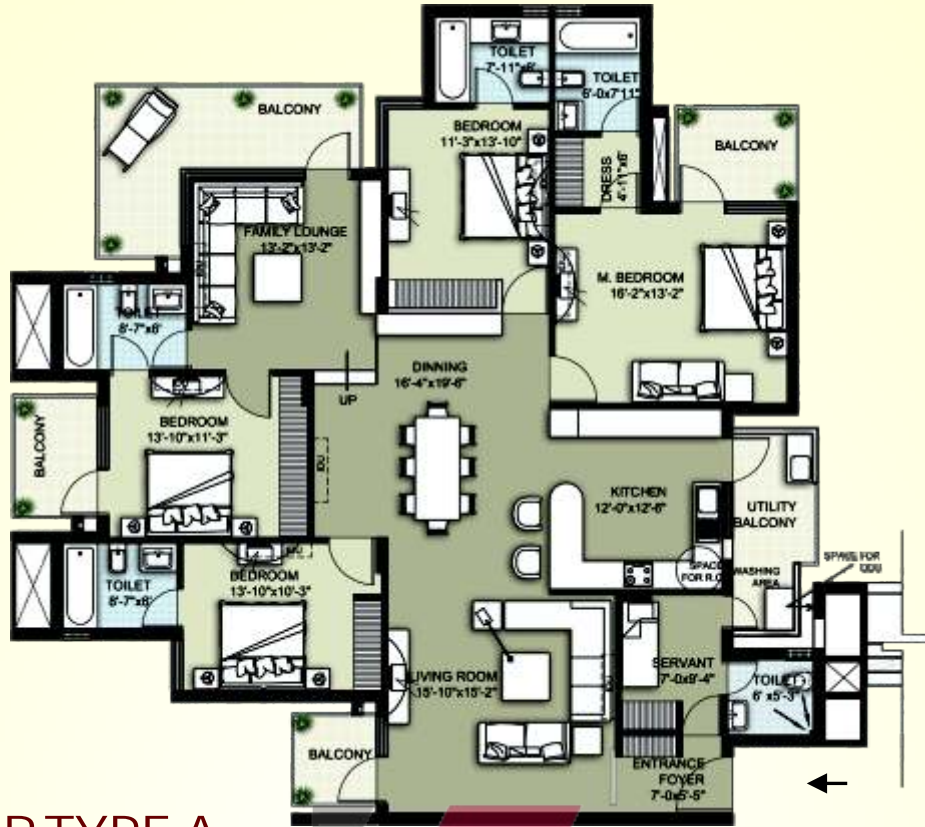


LOWER LEVEL



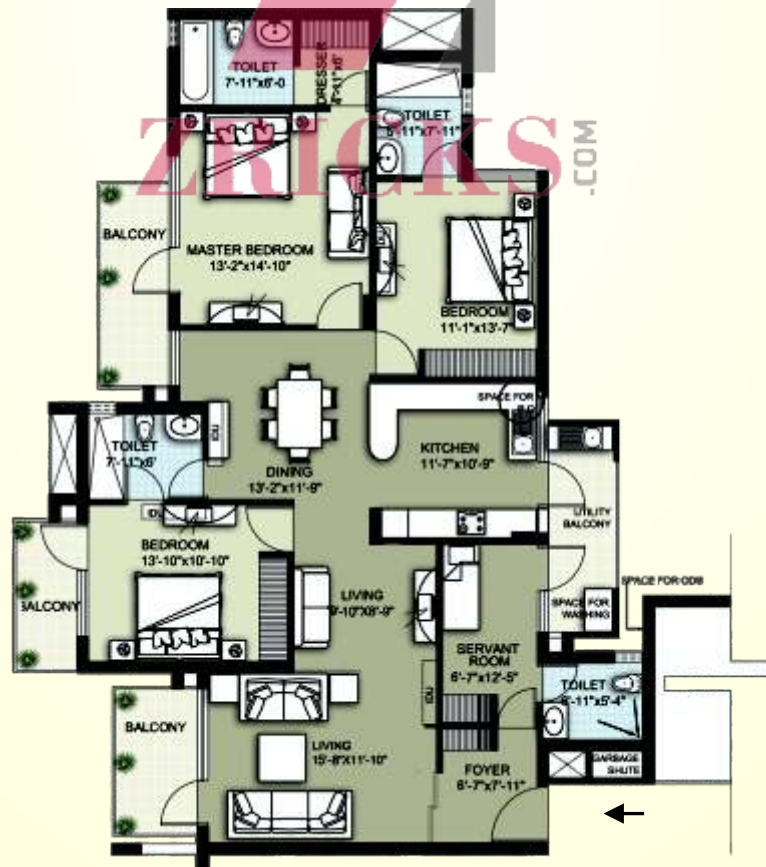
UPPER LEVEL

- In the interest of maintaining high standards, all floor plans, layout plans, areas, dimensions and specifications are indicative and are subject to change as decided by the company or by any competent authority
- Soft furnishing, furniture and gadgets are not part of the offering



### 4 BR TYPE A

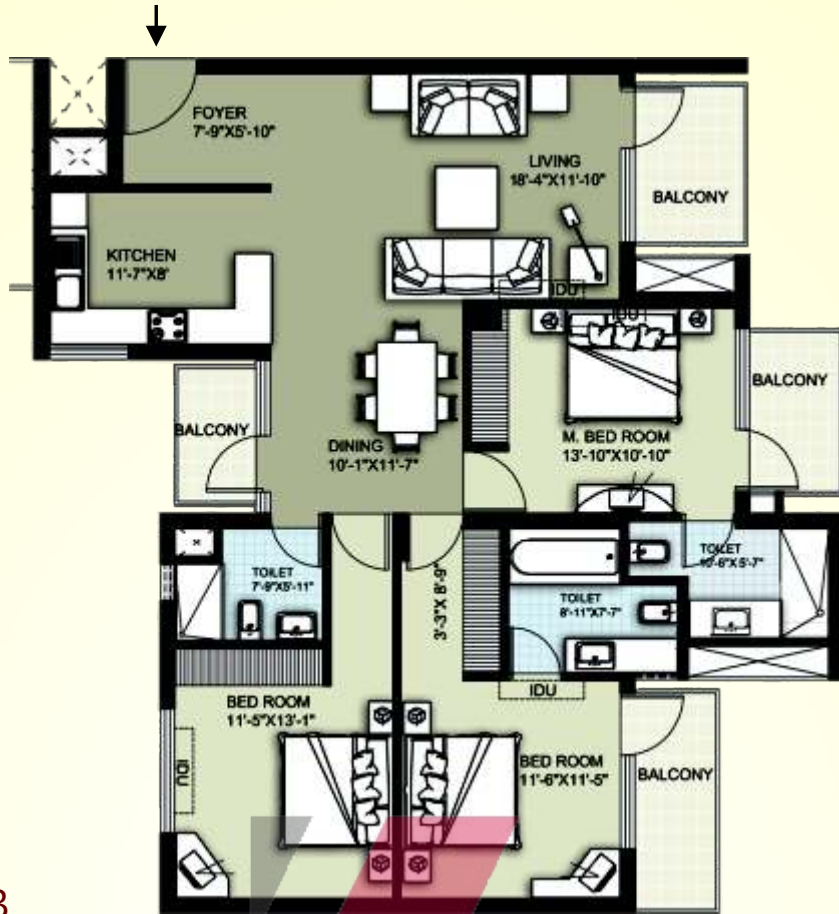
Sales Area : 2990 sq. ft.



### 3 BR TYPE A

Sales Area : 2251 sq. ft.

- In the interest of maintaining high standards, all floor plans, layout plans, areas, dimensions and specifications are indicative and are subject to change as decided by the company or by any competent authority
- Soft furnishing, furniture and gadgets are not part of the offering



**3 BR  
TYPE B**

Sales Area : 1755 sq. ft.

ZBRICKS.COM



**3 BR  
TYPE C**

Sales Area : 1640 sq. ft.





## The Distances

- 🌸 14.81 acres of pure luxury next to the city yet close to nature.
- 🌸 4 km from proposed extension of Delhi international airport (shall be accessible from proposed Gurgaon ring road). Ø 1 km from main Delhi-Rewari railway line.
- 🌸 1 km from Palam Vihar.
- 🌸 500 metres from New Palam Vihar. Ø 7 km from NH-8 (Gateway Tower/ DLF Square).
- 🌸 5 km from Old Delhi- Gurgaon Road (Udyog Vihar, Sector 18).
- 🌸 2 km from Dwarka Phase 2.