

# EKTA MAPLEWOOD

*Khar (W)*

ZRICKS

[www.Zricks.com](http://www.Zricks.com)



SHAPING  
LIFESTYLES  
SINCE  
1987

# INTRODUCTION

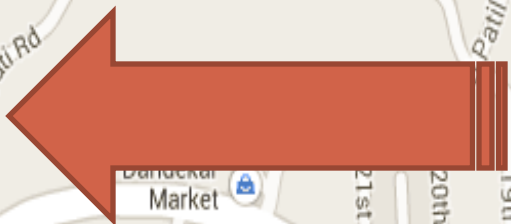
EKTA Maplewood, located at 18<sup>th</sup> road Khar. A 13 storey tower with 2 level podium car parking residential project, dedicated to offering the plushest of lifestyles in a part of the city that's synonymous with the luxury living. Apart from being pampered with hi-end luxury living amenities, an envious sea view, residents will also gain the unparalleled advantage of being close to the famed retail and entertainment infrastructure of the Khar-Bandra region.

Home format at EKTA Maplewood: 3 & 4 BHK apartments

E  
K  
T  
A

W  
O  
R  
L  
D

**SEA VIEW**



**Rajesh Khanna Garden**

**EKTA Maplewood**

**ZRICKS**

[www.Zricks.com](http://www.Zricks.com)

E  
K  
T  
A  
  
W  
O  
R  
L  
D



  
**ZRICKS**.COM

EKTA MAPLEWOOD

EKTA MAPLEWOOD

[www.Zricks.com](http://www.Zricks.com)



# Internal Amenities

## Apartment:

- Imported marble flooring in the entire apartment.
- The apartment comes equipped with the latest electronics like Split AC's in living room and bed room.
- Designer Light Fittings and Ceiling fans with regulators, in all the rooms
- Concealed wiring with fancy modular switches and circuit breakers
- Broadband Internet Connection in all the rooms
- Designer doors with stainless steel fittings
- Anodized aluminum sliding windows



## Kitchen:

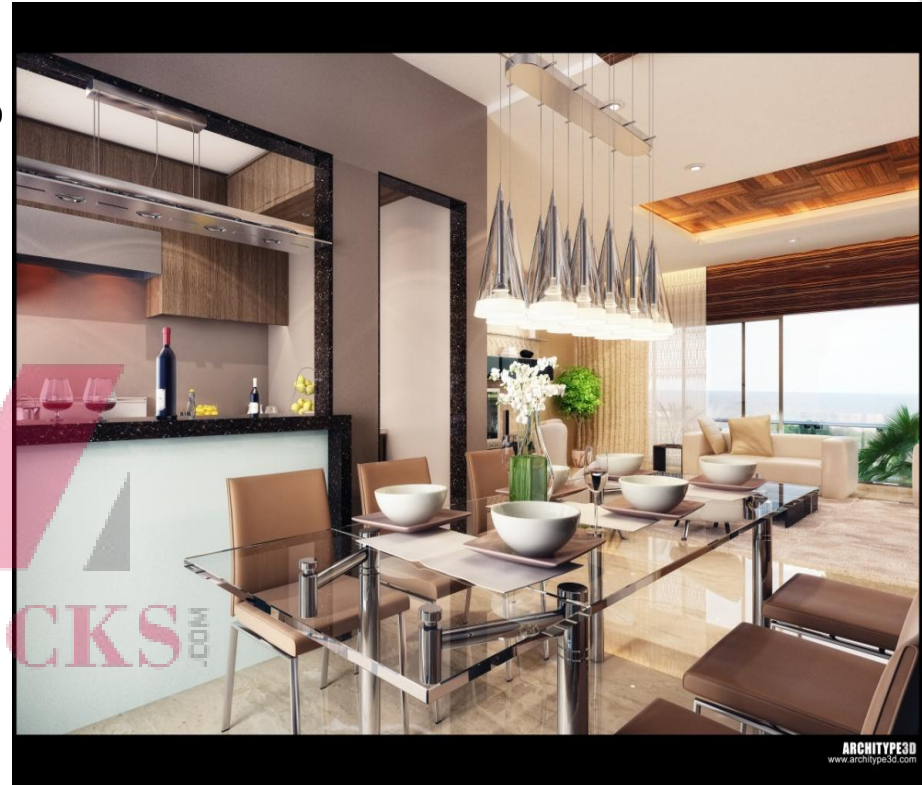
- Designer modular kitchen with Imported Granite, Refrigerator, Washing Machine, Microwave, Hob & Chimney, top kitchen platform with stainless steel sink, Exhaust fan
- Electrical points for other kitchen appliances
- Dado tiles up to the ceiling in the kitchen
- Water purifier.

## Finishes:

- POP on wall with acrylic/luster finish paint and designer false ceiling in the entire apartment.

## Washrooms:

- Imported Marble flooring in each bathroom with high end sanitary fittings. Glass partition for shower area.



## External Amenities



### Salient Features:

- High speed elevators to whiz up to your floor.
- Convenient podium Car Park
- Fully Air-conditioned grand entrance lobby.

### Security & Safety:

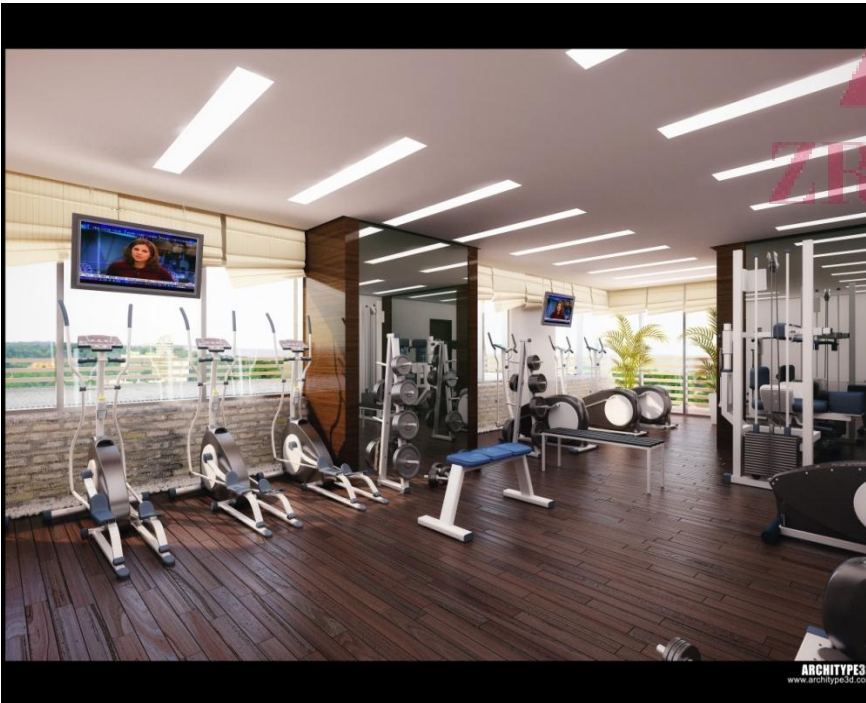
- Video Door Phone.
- Intercom Connectivity.
- Power backup for lifts & common areas.
- Guard House.
- Close circuit TV.



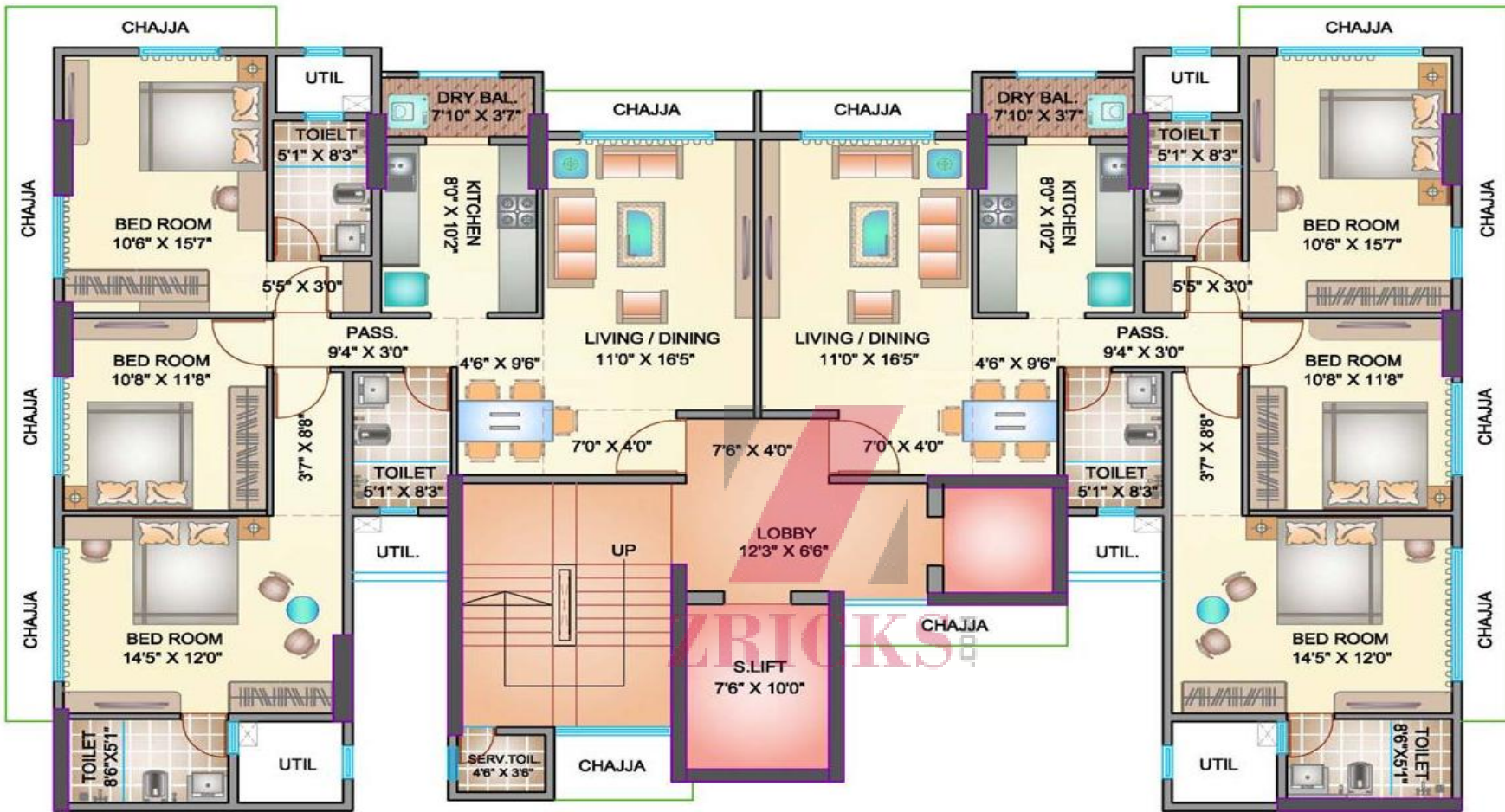


### Add-On features:

- Designer Sky Lounge with landscape gardens
- Ultra-modern Elevation
- Modern gymnasium

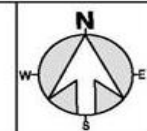






TYPICAL FLOOR PLAN

EKTA Maplewood, 18th Road, Main Avenue Corner, Khar West.

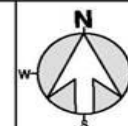


ARCHITECT  
*Reza Kabul*



**Penthouse - 11th Habitable Floor**

**EKTA Maplewood, 18th Road, Main Avenue Corner, Khar West.**



ARCHITECT  
*Reza Kabul*



**REGD. OFFICE:** EKTA WORLD, 401 HALLMARK BUSINESS PLAZA, KALANAGAR BANDRA (E),  
MUMBAI – 400051.

+91 22 6115 2424; +91 22 6115 2200; W: [ektaworld.com](http://ektaworld.com); E: [sales@ektaworld.com](mailto:sales@ektaworld.com)

**DUBAI OFFICE:** EKTA WORLD, AL MUSALLA TOWERS, 1608, 16TH FLOOR, KHALID  
BIN WALEED STREET, NEXT TO AL FAHIDI METRO STATION, BUR DUBAI U.A.E.

+971 50 356 2592; W: [www.ektaworld.com](http://www.ektaworld.com); E: [sales@ektaworld.com](mailto:sales@ektaworld.com)

[www.Zricks.com](http://www.Zricks.com)

E  
K  
T  
A

W  
O  
R  
L  
D